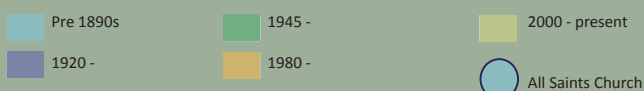
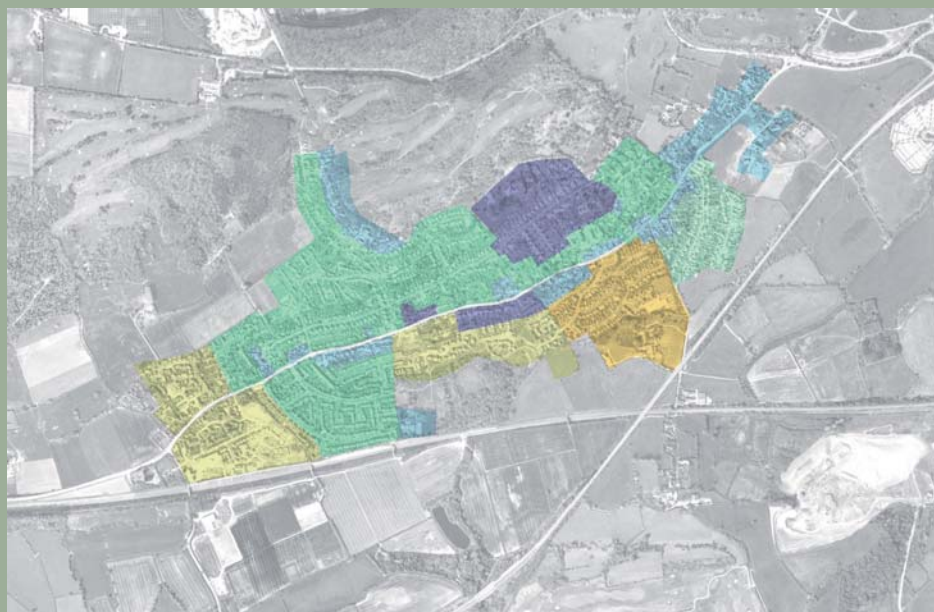


5 The site and context

Historic Expansion

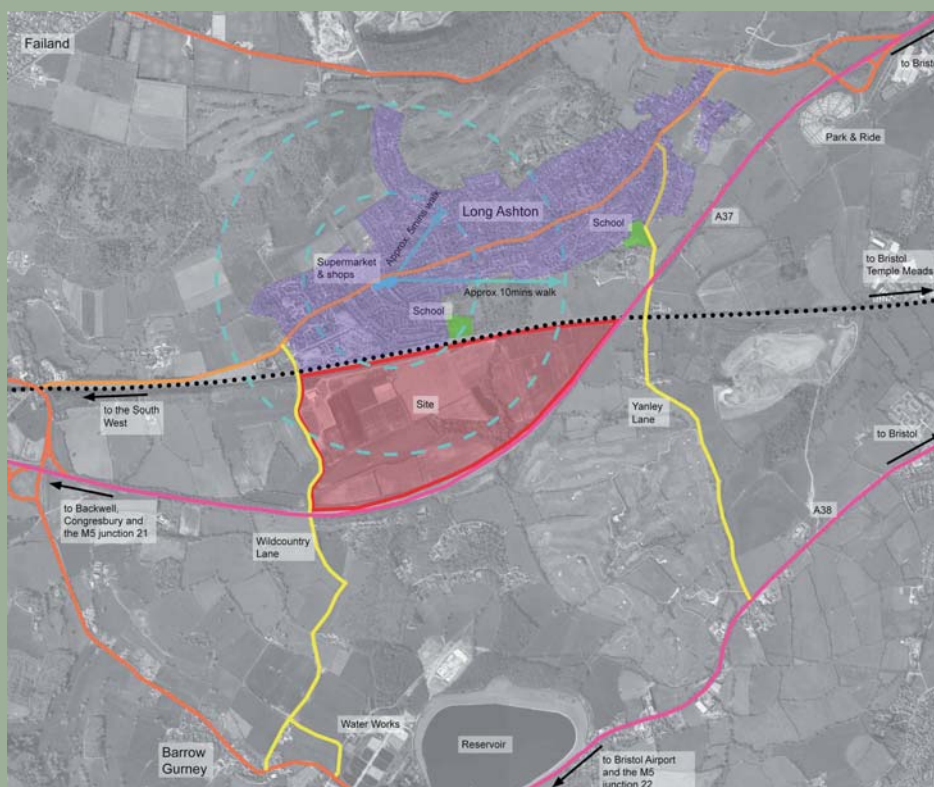


The original settlement of Long Ashton, which dates from the 15th century, grew up around All Saints Church at the east end of the village. By 1880 ribbon development had taken place along much of Long Ashton Road.

These and the later phases of development are shown on the adjoining plan.

DRAFT

Amenities and Connectivity



Long Ashton village is a linear settlement. The majority of facilities (in particular shops, the leisure centre and health) are located towards the west end. Expansion of Long Ashton to the south of the railway would mean that the village would become more 'rounded' in shape and that all new homes would be within ten minutes walk of the local shops.