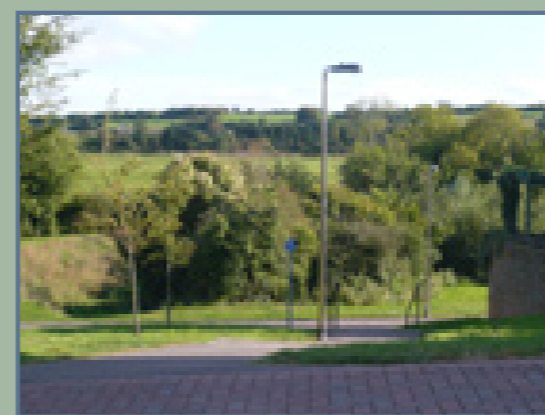


7 Access, movement and integration

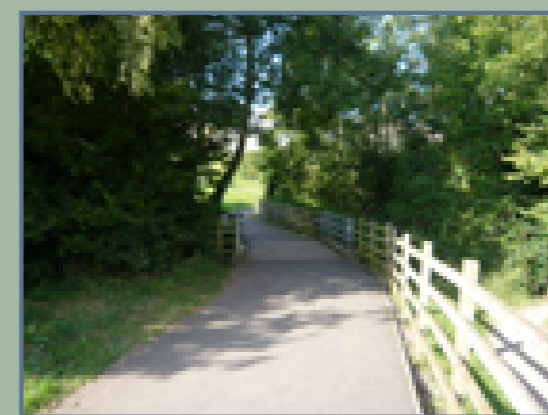
Existing walking and Cycling routes



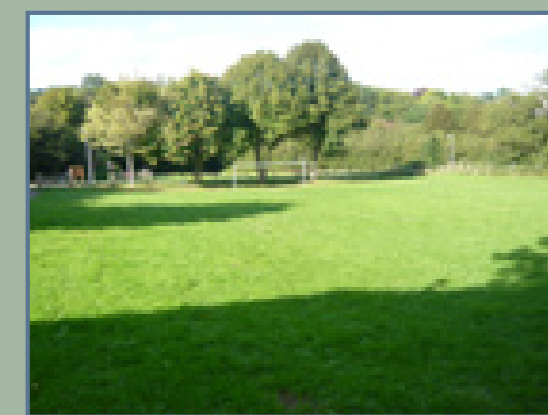
1



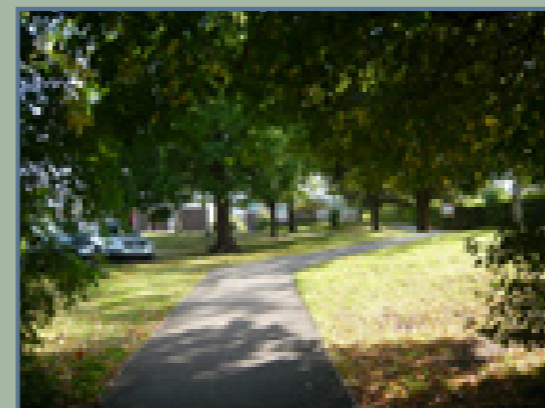
2



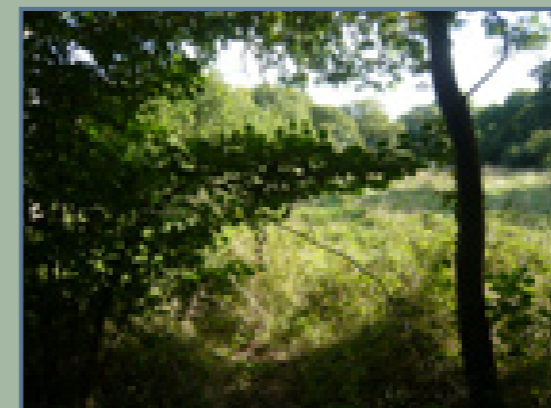
3



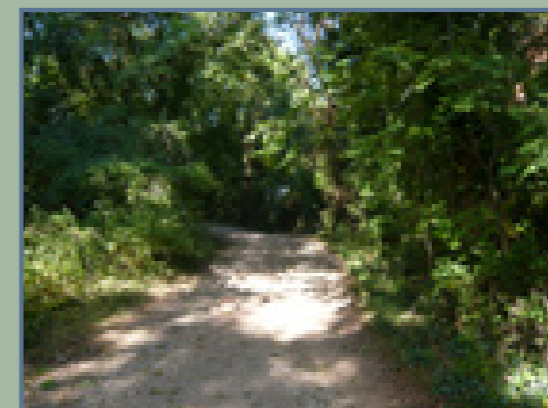
4



5



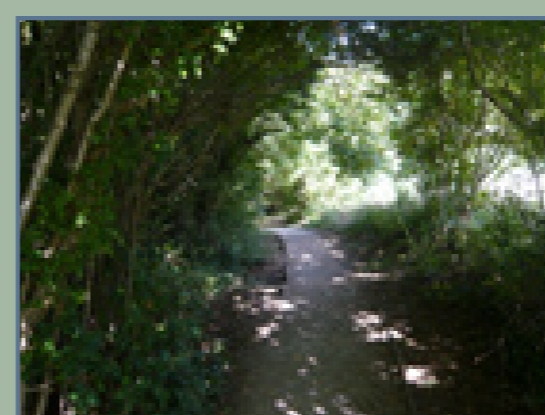
6



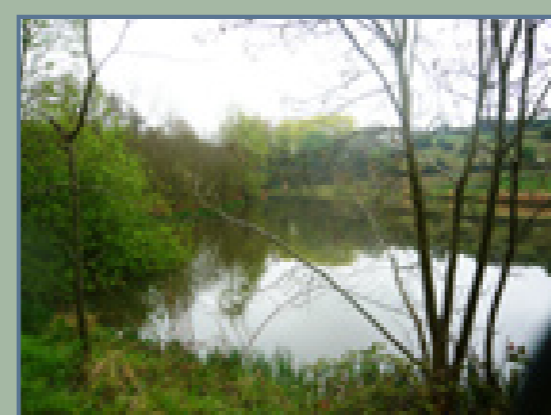
7



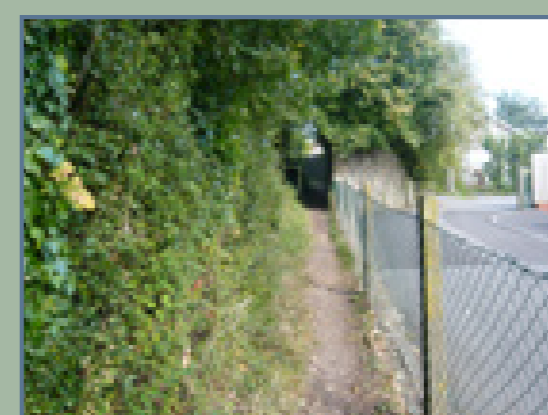
8



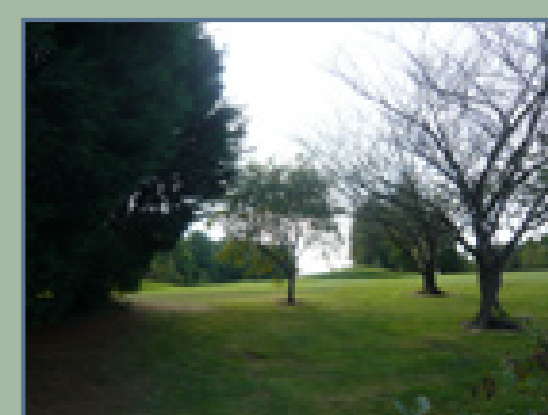
9



10



11



12

Proposed pedestrian and cycle networks

A number of existing public footpaths and cycle routes run through or adjacent to the site. The proposed 'Festival Way' (Sustrans) will link central Bristol to the major events site at Ashton Park and then continue on to Long Ashton, opening up further links to its residents. The link will overcome a major gap in the public footpath / cycle network in the area.

Proposals within the site link to the village via the four bridges that currently cross the railway.

Dedicated pedestrian and cycle links will have priority north-south across the site, respecting the existing rights of way and allowing excellent safe integration to the village. This will allow access to existing retail and other village amenities while also maintaining the links from Long Ashton to the countryside beyond.

East-west vehicular routes through the site will be secondary, but will incorporate provision for pedestrians and cyclists.



Key:

- ● ● ● Pedestrian priority route/ public footpath
- Cycle path