



ROYAL FORT HOUSE

Royal Fort Gardens,
Tyndall Avenue, Clifton,
Bristol BS8 1UJ



Introduction

Royal Fort House was built on the site of the Royal Fort, so named when Prince Rupert of the Rhine was made Governor of Bristol. The house was completed in 1756 for a wealthy merchant, Thomas Tyndall, and still has fine examples of Rococo wood carving and plasterwork. The ground floor has recently been refurbished in keeping with the period of the house and now offers a unique opportunity to hold prestigious events such as dinners, receptions and presentations.

The Fort House is surrounded by beautiful gardens, which the dining room and drawing room both overlook.



Meeting Room Details

Please Note: Royal Fort House is available only evenings and weekends.

	Capacities	Equipment
Yellow Room	Board Room 10	Flipchart
Dining Room	Board Room 18 Theatre Style 40 Lunch/Dinner (round tables) 36 Reception (drinks/buffet) 40	Flipchart OHP and screen Data projector and screen (available at additional cost)
Drawing Room	Theatre Style 40	Flipchart OHP and screen Telephone connection Internet Connection Data projector and screen (available at additional cost)

Receptions

The ground floor of this Grade 1 listed building has reception rooms and an entrance hall which have recently been restored. The facilities are restricted in numbers and types of use, but would be ideal for major corporate hospitality events. The dining room is limited to a maximum of 40 for a formal dinner and buffet receptions. The building is certain to impress and the quality of catering and service is there to complement the surroundings.

Wedding Ceremonies

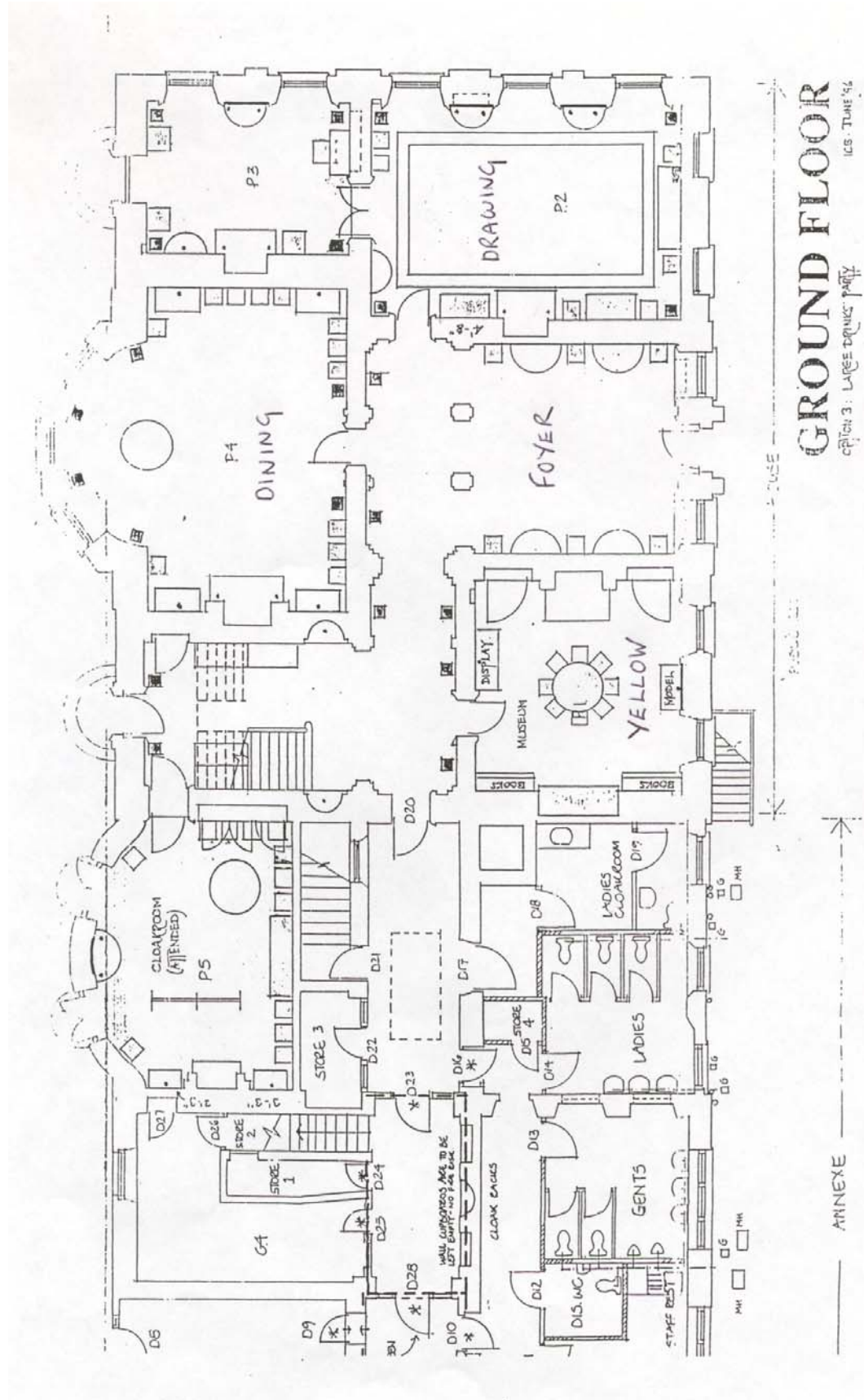
The Royal Fort house is licensed for small weddings with a maximum of 40 guests for the ceremony, and 36 guests for a dinner or 40 for a stand-up buffet. The Fort House has beautiful gardens, and on request a marquee can be set up for a drinks reception.

The Drawing Room is licensed for weddings, and the Dining Room can be set up for receptions. Our costs include:

- Use of all rooms on the Ground Floor
- Services of a Duty Manager
- Flower arrangement in the foyer and wedding ceremony room
- Photographic fee for the gardens

All catering would be provided by The Hawthorns, the University caterers, who will be happy to offer whatever style of catering you prefer, whether that would be a formal seated wedding breakfast or a Fork buffet. Please ask the Conference Office for a Wedding Menu pack.

FLOOR PLAN



Availability

The meeting rooms are available for functions and meetings all year round during evenings and weekends only.

Catering

Buffets can be served in the foyer, or sit-down meals in the Dining Room up to 36 delegates.

Catering for the Royal Fort House is provided by the Hawthorns. They can offer cold and hot fork buffets, a 3 course sit-down lunch or dinner and/or wine reception and there is also a separate wedding menu.

Disabled Access

There is disabled access via a ramp through the back of Royal Fort House, and there is also an adapted disabled toilet. *We advise you to contact the Conference Office as early as possible to discuss the provision of additional support for disabled delegates.*

Location

Royal Fort House is situated a mile from the city centre, within the University of Bristol precinct. There is on-site parking at weekends, out of term time and in the evenings. An NCP Car Park is situated 3/4 minutes walk from Royal Fort House on Park Row.

Directions from M32

- Exit the M4 at junction 19 marked for the M32. Follow the M32 into Bristol.
- The motorway terminates a few hundred metres from a major T junction. Carry straight on from the end of the motorway and turn right at the junction (following signs to Bus Station and Clifton).
- You come to a roundabout where you should take the second exit (following signs to Bus Station, Royal Infirmary and Clifton).
- Go straight on over several sets of traffic lights. Just after the entrance to the multistorey car park on your left, turn right into Woodland Road.
- At the top of the hill is a crossroad. Turn right (into Tyndall Avenue). The entrance to Royal Fort House is just on the right at the bottom of Tyndall Avenue.

By Train

There are two mainline railway stations in Bristol, Temple Meads and Parkway. If you have a choice, you are advised to arrive at Temple Meads as it is much closer to the University precinct and operates a free **Hospital and University Shuttle Bus** service to the University. Alternatively, the **number 8** and **number 9** bus services (renumbered 508 and 509 at certain times of day) run to the precinct.

Emergency Procedures

The following notice is left on the top table during each meeting, this is to be read out to all delegates so that they are clear of our emergency procedures.



WELCOME TO THE UNIVERSITY OF BRISTOL

CONFERENCE OFFICE

Safety Information for Conference Delegates

Could you please make yourself and your delegates aware of the emergency evacuation procedures for ALL the venues you attend during your Conference.

Please refer to the full procedures located on the wall within each room.

- All delegates to make their way to the nearest fire exit by following the fire signs.
- Do not collect personal belongings.
- Do not use any lifts.
- Report to the Assembly Point.
- DO NOT re-enter the building until you are advised that it is safe to do so.

PLEASE NOTE:-

The porters will be available to assist with the evacuation of all attending this event.