

# Sheffield Case Register

**A trip through how we use this data to examine health needs and health inequality**

Heather Burns  
Senior Commissioning Manager  
NHS Sheffield  
Clinical Commissioning Group

# Introducing the Sheffield Case Register

- Set up in 1974. Managed by Sheffield Health and Social Care NHS Trust\*
- 90-95% estimated population coverage all ages birth to death (opt in)
- Update Visit every 5 years to each registered person
- Covers all ages from birth to death
- Tracks changing health status over time
- Costs approximately £120k annually

- ✓ Age, Gender, Ethnicity
- ✓ Severity of impairment rating
- ✓ Diagnosis
- ✓ Secondary diagnosis/medical conditions
- ✓ Abilities/self help skills
- ✓ Challenging behaviour /autism/PIMD
- ✓ Carer details/age
- ✓ GP and other medical contacts
- ✓ Living situation
- ✓ Employment status

3,757 active clients, all ages and including non-Sheffield.

3,587 Sheffield only



# Benefits and Uses

## Projecting health needs and demands/research

- Local and national research studies
- Used as a basic data set for all local work on commissioning
- Used to develop business cases and manage priority activity/care pathways

## Improving access to care and signposting

- Annual download to Sheffield Teaching Hospital (STH). Patient Admission System then flags patients for every inpatient and outpatient contact at all STH sites
- Tracks hospital admission rates and patterns of service usage across each hospital specialty and tracks morbidity and mortality rates
- Annual download to GPs to enable them to identify people with LD on their QOF register and DES AHC register (increases eligibility)
- Sheffield Case Register Visitors signpost people into services
- Used to communicate information to families e.g. swine flu, dental health research project
- Service investigations: access to neurology services for people with epilepsy/breast screening/cervical screening/QOF disease register comparisons

## Examples of the detailed information that Sheffield Case Register can provide

Sheffield Case Register identification of people with complex needs:

37.5% were from BME communities (17.5% from Pakistani community)

67.5% had airway problems of which 30% required suction

45% required non oral feeding

67.5% of people had epilepsy, with a prediction of 35% of these having complex and serious seizures at adulthood

Predicting 82% will be wheelchair dependent at adulthood

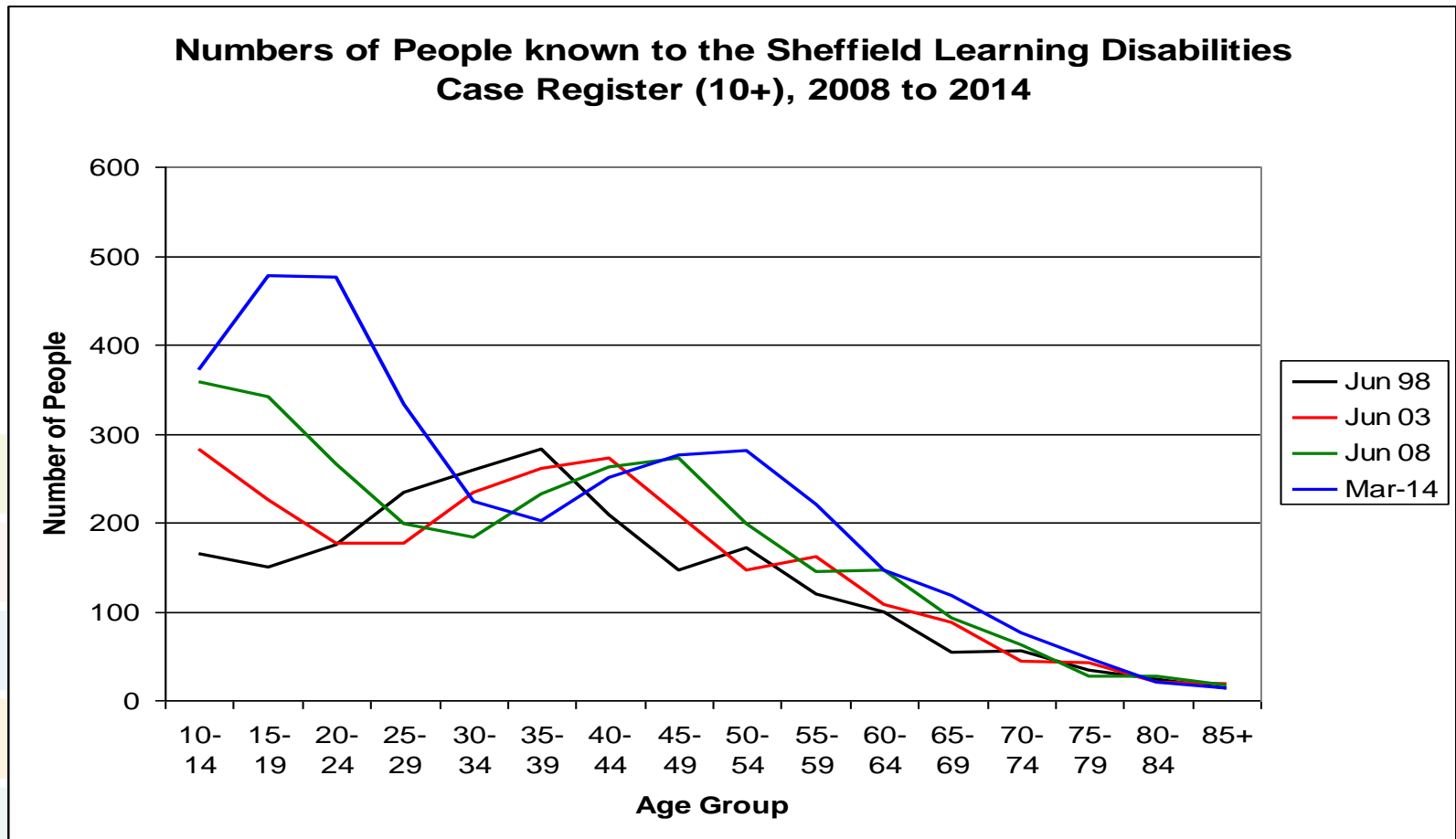
100% doubly incontinent

22.55 predicted to have a degenerative condition

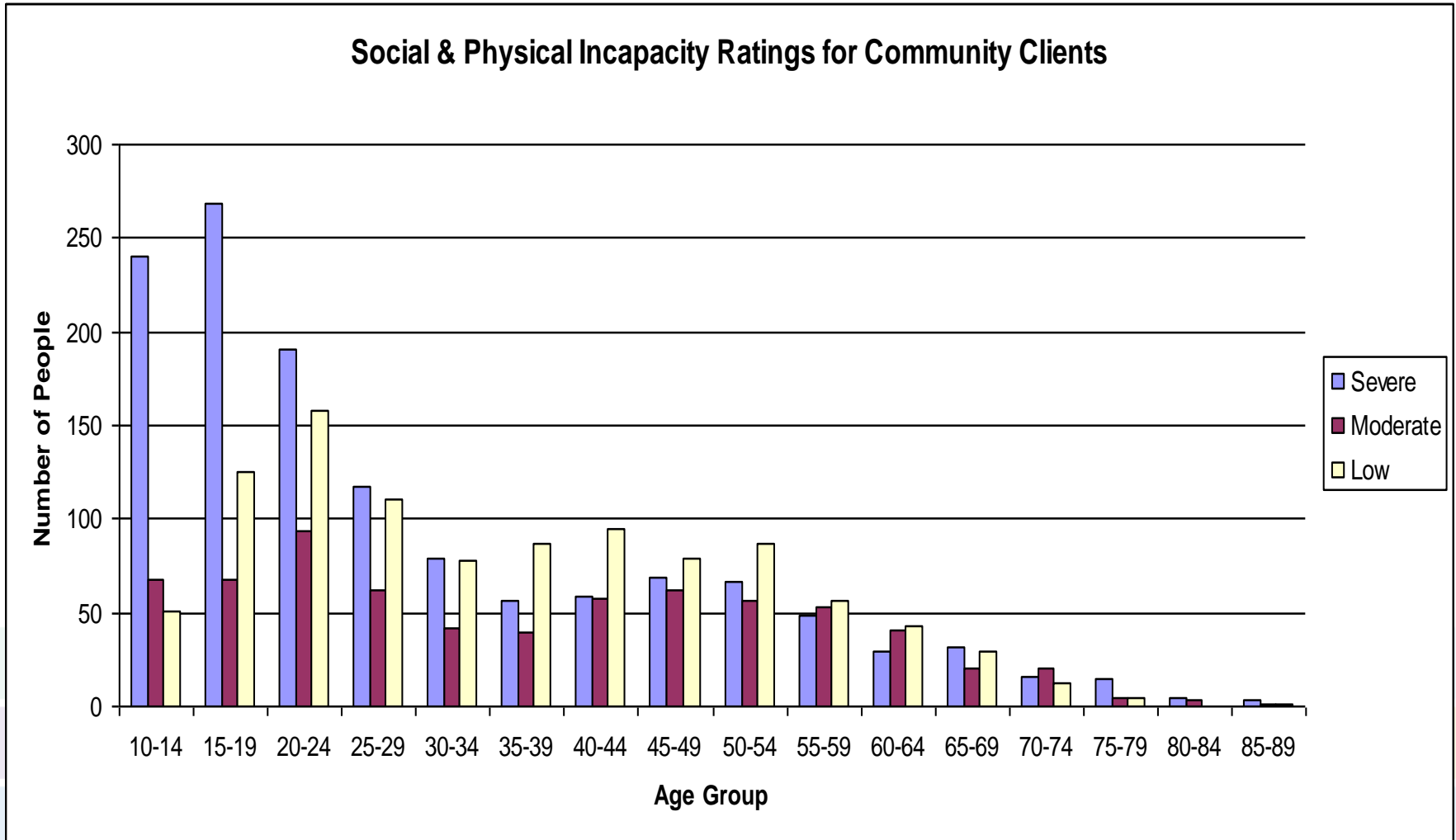
*Tilley, N (2006) Identification of 14-19 year olds with PMLD in Sheffield and the trends and themes of their complex health needs. Sheffield Joint Learning disability Service*

# Social Physical Incapacity Ratings of people aged 10 - 85+

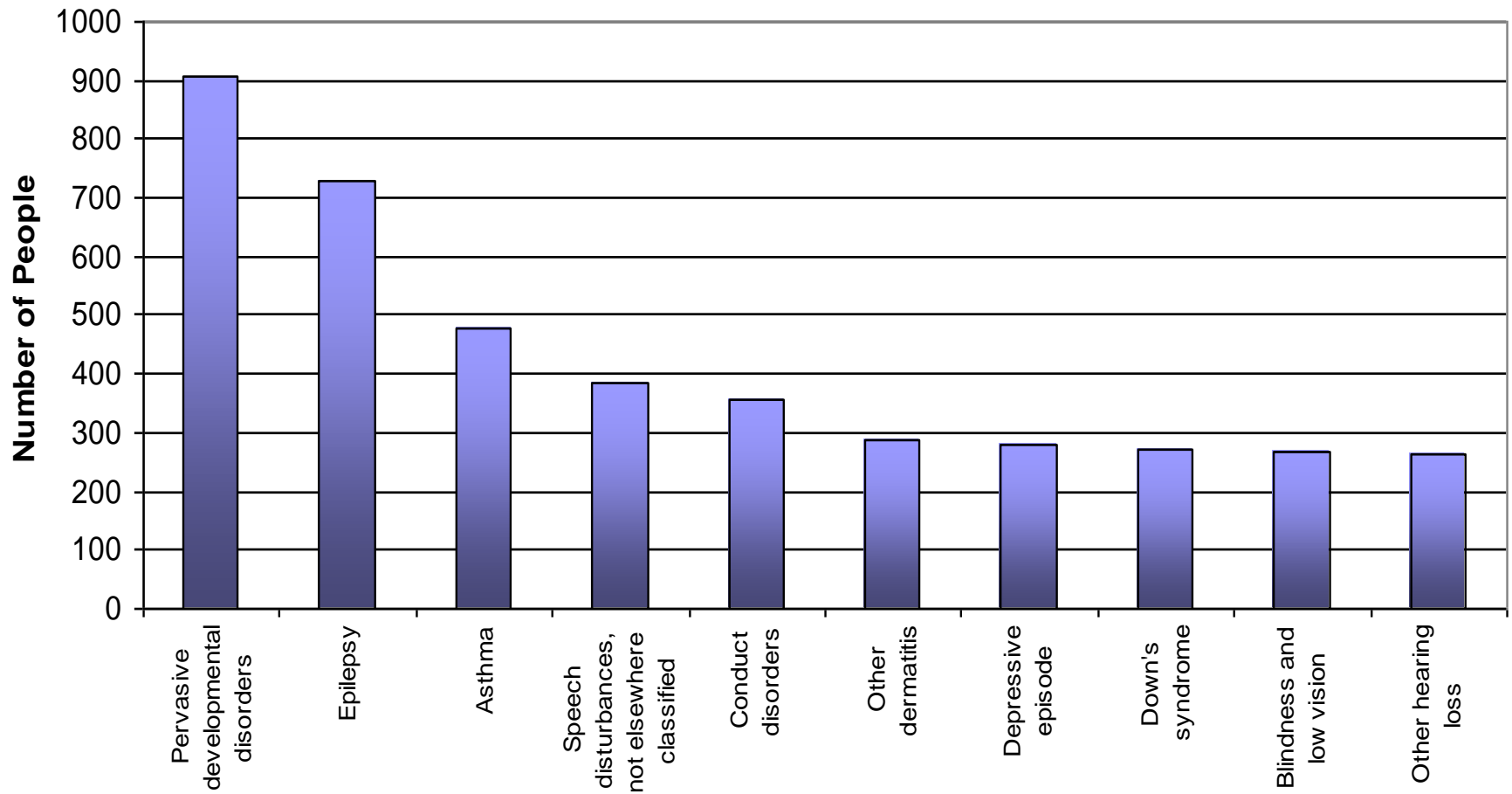
1998 -2014



# Breakdown of Severity of Impairment Ratings 2014

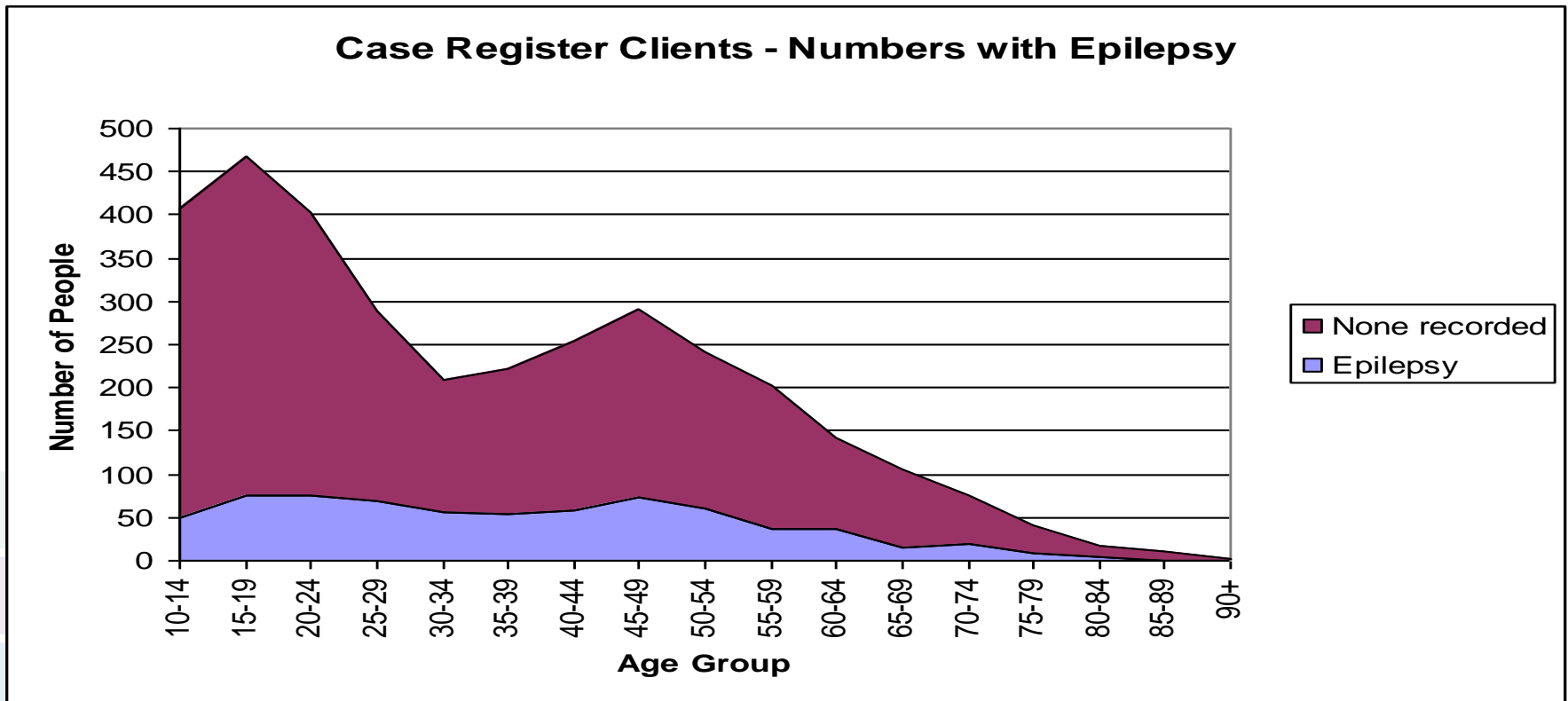


### Active Case Register Clients: Top 10 Specific Additional Conditions



# The Epilepsy project

- Research project and article by a multi agency group, led by Consultant Neurologist Marcus Reuber, Sheffield Teaching Hospitals, who had identified what he believed to be a gap in the referral rates by GP's of people with learning disability and epilepsy.
- Case Register could identified 750 people with a confirmed diagnosis of epilepsy and LD.
- This research led to work on addressing the gaps in access to neurology services in Sheffield and the development of new tools to increase referrals and management of this population. This work is on going.







# The data helps us to Look Ahead...

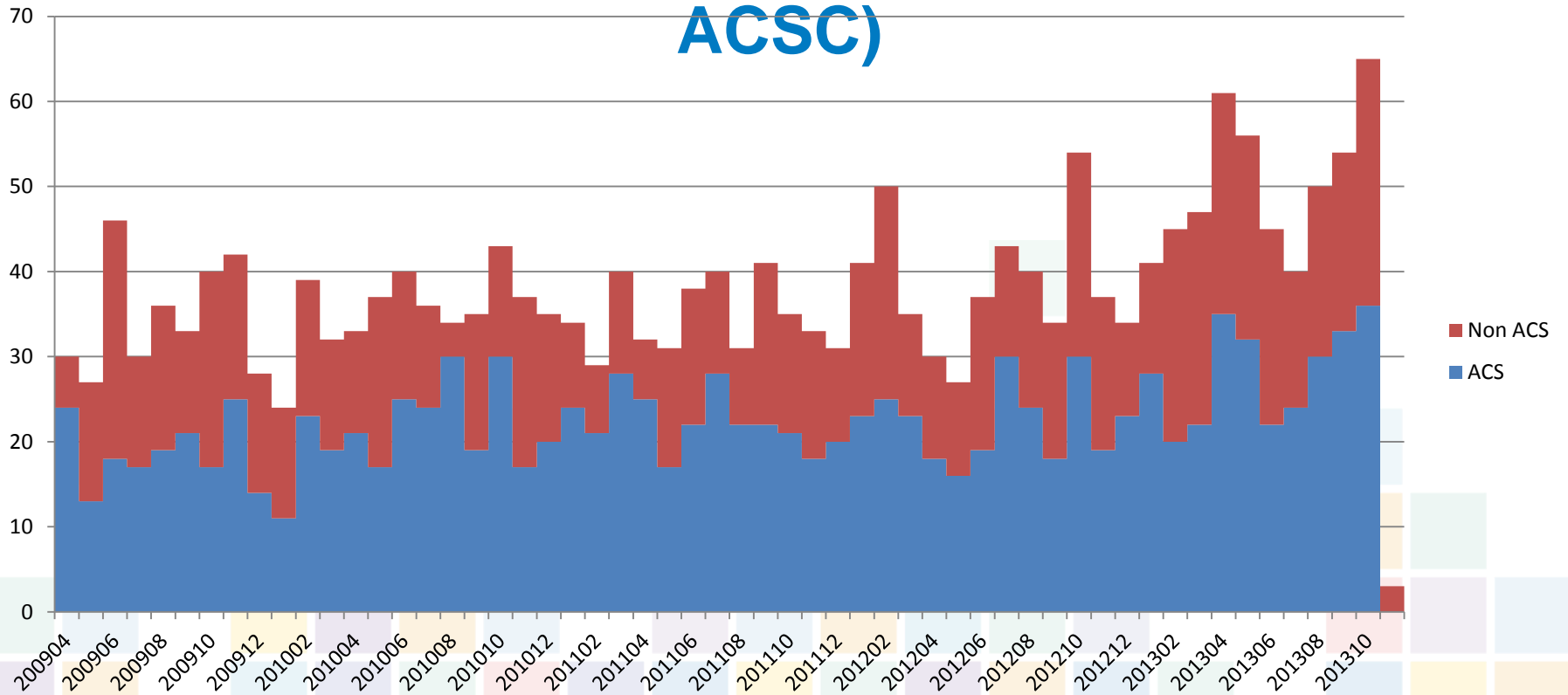
- Between 1998 and 2012, overall numbers on the Case Register have grown by 47% (2,456 to 3,610).
- The number of adults with moderate or severe learning disabilities will rise by over 27% over the next ten years
- Numbers in the 10-19 group have grown by 179% since 1998... this is the new adult population coming the way of adult services
- The number of young adults with a learning disability age 20 to 30 years will rise by 90%
- The number of over 65s with a learning disability will rise by 48%
- Numbers of people in BME groups grew by 140% which means their proportion of people in these known groups went up from 7.8% to 12.6%
- Those in the least able groups based on their Social & Physical Incapacity (SPI 1-4) grew by 62% in absolute terms and increased their share of known clients from 42% to 46%.

**Source Sheffield Case Register 2012 and Sheffield JSNA 2008**

# Recent work on Identifying High Risk Patients in GP Practice List

Practice Risk Score Bands - Learning Disabilities clients cf Rest of Population						
Data Source: Practice Combined Predictive Model Extract view - run CCGIU MW 9/12/2013						
	LD client		Non LD client		Total No people	Total % in Risk Band
Risk Band	No people	% in Risk Band	No people	% in Risk Band		
0<10 Low	2237	73.44%	460064	81.19%	462301	81.14%
10<30 Moderate	677	22.23%	88682	15.65%	89359	15.68%
30<70 High	122	4.01%	16540	2.92%	16662	2.92%
70<100 Very High	10	0.33%	1391	0.25%	1401	0.25%
<b>Grand Total</b>	<b>3046</b>	<b>100.00%</b>	<b>566677</b>	<b>100.00%</b>	<b>569723</b>	<b>100.00%</b>

# In Patient Spells for Current GP LD Flagged Patients December 2013 (ACSC and Non ACSC)



Data Source: Practice Combined Predictive Model Extract view - run CCGIU MW 9/12/2013

## CPM Learning Disability patient register

CCGIU/MW/ 29Oct2013

Data Extracted from CPM extract (Practice C88076 not included)

Total Practice Registered Population with CPM extract	569,306	
Of which flagged with Learning Disability		<b>cf Non LD population</b>
LD	3,043	566,263

### Of the 3043 Learning Disability patients the following are flagged:

COPD	27	0.9%	11,274	2.0%
ASTHMA	484	15.9%	70,331	12.4%
DIABETES	232	7.6%	27,983	4.9%
DIABETES_T1	22	0.7%	2,628	0.5%
DIABETES_T2	215	7.1%	25,985	4.6%
HYPERTENSION	292	9.6%	75,313	13.3%
ANGINA	23	0.8%	11,315	2.0%
AF_REGISTER	33	1.1%	10,084	1.8%
AF_DIAGNOSES	145	4.8%	29,131	5.1%
HEARTFAILURE	27	0.9%	4,855	0.9%
IHD	56	1.8%	21,761	3.8%
MI	19	0.6%	9,585	1.7%
PVD	5	0.2%	4,225	0.7%
TIA	19	0.6%	6,344	1.1%
STROKE	55	1.8%	7,081	1.3%
CKD	86	2.8%	21,505	3.8%
HYPOTHYROIDISM	219	7.2%	19,289	3.4%
CANCER_A	44	1.4%	15,571	2.7%
CANCER_B	1	0.0%	996	0.2%
EPILEPSY	740	24.3%	6,496	1.1%
DEPRESSION	374	12.3%	71,776	12.7%
DEMENCIA	23	0.8%	4,378	0.8%
MH	158	5.2%	4,296	0.8%
LD	3,043	100.0%	-	0.0%

# Further information? Please contact

[Heather.Burns@nhs.net](mailto:Heather.Burns@nhs.net)

Sheffield CCG LD Senior Commissioning Manager

[Agnes.mcauley@nhs.net](mailto:Agnes.mcauley@nhs.net)

Long term Conditions Senior Commissioning Manager

[john.wolstenholme@SHSC.nhs.uk](mailto:john.wolstenholme@SHSC.nhs.uk)

(Information Manager Sheffield Health and Social Care Trust) Mr Case Register!

Anita Winter

Deputy Director of Disabilities Joint Learning Disability Service Sheffield Health and Social Care Trust. (Case Register Service Manager)

[Anita.winter@shsc.nhs.uk](mailto:Anita.winter@shsc.nhs.uk)

Sheffield JSNA <http://www.sheffield.nhs.uk/healthdata/resources/jsnafeb10.pdf>

Signpost Sheffield

Web resource pages for the Joint Learning Disability Service, Partnership Board and Commissioners. [www.signpostsheffield.org.uk](http://www.signpostsheffield.org.uk)