

# **SNAPSHOT OF SAFETY AND HEALTH AT WORK**

## **2021/22**

Highlighting the collective efforts and achievements from staff across the University of Bristol to make health and safety business as usual.

**[bristol.ac.uk/safety](https://bristol.ac.uk/safety)**

# IMPROVEMENTS FROM LAST YEAR

- We continue to deliver the University's vision of making H & S business as usual, through engaging, empowering and enabling our communities and stakeholders.
- Our performance remains strong as our advice and guidance is trusted and acted upon.
- A Health and Safety Executive (HSE) inspector looked at the University's response to COVID-19 and was impressed by the breadth and range of our measures and mitigations, raising no issues of concern.
- Campus Division achieved accreditation of their Health & Safety management system to the internationally recognised standard.
- Ventilation systems have been improved to provide better thermal comfort and air quality across our teaching and learning spaces.
- Our Occupational Health Service (OHS) delivered its Service Level Agreements with HR, the Faculty of Health Sciences and School of Education.
- Further improvement in overall performance against our core landlord activities, now exceeding our 97% target.
- Earlier and more active engagement in the assessment and management of H & S risk as part of decision-making and activity planning across the University.
- We have now reviewed and processed nearly 2500 requests for homeworking equipment/furniture to support safe and healthy home environments, arranging home delivery for 100s. All risks were evaluated, and no cases of injuries or ill health were reported.



# OCCUPATIONAL HEALTH

**During the year, the team delivered a hybrid of services, providing face-to-face clinics and online appointments and telephone consultations.**

**Occupational H & S advice continues to grow more accessible to those who need it, when they need it.**

**ENGAGE  
EMPOWER  
ENABLE**

- The OH team ran a successful campaign called Prostate Matters during June 2022 to increase men's awareness of prostate cancer, the benefits of early detection and to get men talking about their health more widely. The campaign was led by Occupational Health with support from Prostate Cancer UK.
- During 2021/22, the OH team saw almost a 50% increase in staff and student contacts compared to 2020/21 and significant increases in immunisations, blood tests and health surveillance activities. This reflects increases in staff and student numbers and highlights the growing complexity and range of health issues across our communities.
- The OH team oversaw the redesign of the Safety and Health Services office space to make it fit for purpose with the waiting area relocated outside of the department and 2 additional clinic areas created.
- In June 2022 the much-awaited Orchid Live OH software system was also successfully implemented to allow access via the web and create more streamlined and efficient processes.

# TRAVEL

The Safety & Health Team has continued working with stakeholders to provide access to essential travel and off-site working information together in a single place, the [Global Travel SharePoint site](#).



## Improvements made

- Provided secure data on international travel in support of colleagues in the Secretary's Office (SECO) to aid in our Insurance Provider selection.
- Implemented an alert from the system to automatically notify the International Mobility Team when travellers are planning work related stays of 30 days or more, so that they can be contacted and advised.

## SafeZone for overseas travel

- The SafeZone App is in use by staff and student international travellers.
- The app allows travellers to request help and assistance whilst overseas and provides a means to identify and contact people in regions when local disruptions occur.
- The app provides assurance to travellers in potentially hazardous locations, who were able to 'check in' and communicate with the University whilst abroad.
- The Safety & Health team have produced and is distributing handy 'quick reference' leaflets to aid travellers in setting up and using the system.

# BIOLOGICAL

Following a regulatory inspection of high-hazard containment facilities, the University laboratories and procedures were assessed as compliant, and the University's Biorisk management system was commended.

Support and advice to Campus Division, managers and other representatives from the Life Sciences Faculty and external consultants progressed plans for two new CL3 facilities to be constructed at the Clifton Campus.

# FOOD SAFETY

Support provided to catering to help them develop in house food safety training to meet legal requirements as well as bespoke training needs.

Currently, all 16 University food outlets have received either 4/5 or 5/5 star food hygiene ratings from the local Council. 7 sites have achieved elite status (3 or more consecutive 5\* ratings).



# AUTOMATED EXTERNAL DEFIBRILLATOR (AED)

Safety and Health Services worked with colleagues from Bristol Medical School, together with security, estates and campus divisions as well as taking advice from external stakeholders from the Ambulance Service and Bristol City Council, to review our defibrillator provision and to locate sites for 6 brand new additional 24h access units.

We are now able to offer 24h access to life saving AED equipment across our central campus, with plans to extend this provision across our satellite sites in the future. This forms part of the University's drive to support and work with our local community as civic engagement, building a resuscitative community together.

The [AED webpage](#) provides information to staff and the public about the locations of the defibrillators, as well as guidance on how to use them and advice on what to do in an emergency.



# CHEMICAL

Following a Dangerous Occurrence that resulted in failure of a compressed gas pipeline, an independent survey and inspection of fixed manifold systems was commissioned by Campus Division Compliance team.

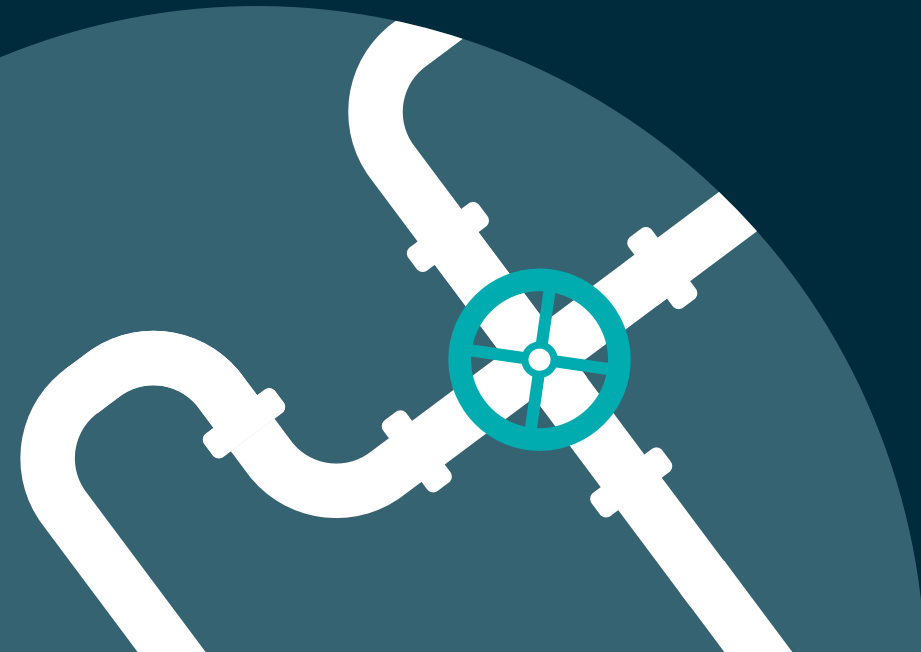
The report found the systems inspected were satisfactory with a few minor recommendations. The consultant noted the record keeping and documentation around fixed gas systems was of a higher standard than had been observed within other Higher Education settings.



# RADIATION

An on-site main campus inspection was held during May 2022 with the Environment Agency (EA) Radioactive Substances Regulatory Inspector and the UK South-West Counter Terrorism Security Adviser (CTSA) to review compliance with the EA Permit for main precinct sealed sources, specifically in the Biomedical Sciences building, the School of Physics and School of Earth Sciences. No non-compliances were recorded, and recommendations made are to be completed by the end of 2022.

Following an inspection from the HSE Specialist Radiation Inspector, better engineering controls have been introduced in one of our laser labs and the risk assessment reviewed and updated.



# FIRE SAFETY

Fire Safety continues to be at the forefront of Safety and Health's focus and work is continuing to ensure that our campus is safe.

The Fire Safety Advisor will resume resumed their inspections of University buildings in August 2022 to comply with our agreement with Avon Fire and Rescue Service.

The Fire Safety Adviser is working with Campus Division to address common issues of fire inspection failures.

Work is ongoing with the residential life team to see how we can improve fire safety across University and privately owned accommodation.

Safety and Health Services are working with Schools, Disability Services, Security Services and Residential Life to ensure that Personal Emergency Evacuation Plans (PEEPS) are working as they should and to enable reasonable adjustments and workable plans to be in place.





# THANK YOU

We recognise the contribution made by Schools and Divisions, their safety advisors and managers and Trade Union Safety Representatives in helping to manage Health and Safety at a local level.

We would like to thank our entire University community for helping us to maintain a safe and healthy working environment and look forward to working together to embed safety and health business as usual.

**ENGAGE  
EMPOWER  
ENABLE**

[bristol.ac.uk/safety](https://bristol.ac.uk/safety)