

A PLACE OF AMAZING STORIES



To read all about
our amazing stories
scan the QR code
or visit [bristol.ac.uk/
amazing-stories](http://bristol.ac.uk/amazing-stories)

Butterflies

Design: The Chase
Print: Belmont Press
Photography: Fotohous,
Dan Rowley, Sam Rowley,
Nick Smith, Bhagesh Sachania,
Y. Beletsky (LCO)/ESO,
Paul Box Upfest, Dave Pratt,
Jim Johnson, Destination Bristol,
weavesilk.com.

The Bristol difference

- 2 Doing things differently
- 4 Don't just take our word for it
- 6 Your story starts here

An innovative education

- 8 Big questions and lightbulb moments
- 10 Research-led teaching
- 12 Living wall, Voronoi and bucky ball
- 14 World-class campus
- 16 Aerospace, animals and awards
- 18 Your career begins here
- 20 Real-world experience
- 22 New horizons, global perspectives

An amazing city

- 24 Offbeat, one-off and on the rise
- 26 City of surprises
- 28 Our location
- 30 Your home from home

Putting you first

- 34 Skydiving, socialising and support
- 36 Wellbeing
- 38 Discover your potential
- 40 From Tai Chi to TEDx
- 42 Keep fit, make friends, find your focus

Finding the right course

- 44 Focus, specialise and explore
- 46 Choosing your course
- 48 Find your passion
- 50 Our courses

Further information

- 66 Applying to Bristol
- 68 Your application and offer
- 70 Finance and fees
- 72 Bursaries and scholarships
- 74 Explore Bristol and find out more
- 76 Clifton campus map

DOING THINGS DIFFERENTLY

Our research has global impact and this feeds our innovative teaching.

Bristol academics bring their work to life in our first-rate facilities. We'll challenge you to consider the big questions facing our world by contributing to research and learning skills that will help you identify and thrive in your career.

We take a holistic approach to your wellbeing.

Your time at Bristol will expand your horizons, enhance your skills and build your resilience. From advice on managing finances, to peer mentoring and ideas for keeping physically and mentally well, our range of support will help you realise your full potential.

We're part of a brilliant city.

We've absorbed and influenced Bristol's restless and independent spirit for more than a century. Our collaborations with industry and local partners directly influence your undergraduate experience, giving your studies real-life relevance.

Created using weavesilk.com



To read all about our amazing stories scan the QR code or visit bristol.ac.uk/amazing-stories

We're taking a stand on climate change.

As one of the first UK universities to declare a climate emergency we aim to play a key role in combatting climate change and this is reflected in a range of initiatives on campus. Our world-renowned Cabot Institute brings together more than 600 experts from multiple disciplines who are working together to research solutions to environmental challenges. Find out more at bristol.ac.uk/green

We're studying our history and striving to be the institution we want to be.

We are confronting our past, understanding how it influenced us, and moving forwards as an inclusive, welcoming and diverse organisation. Through new initiatives such as the Black Bristol Scholarship Programme, and our established contextual offer scheme, we aim to address issues affecting society so that all students feel welcomed, supported, and heard.

DON'T JUST TAKE OUR WORD FOR IT

9th

university in the UK
(QS World University Rankings, 2021)

3rd

most cultural and
creative city in the UK
(European Commission, 2019)

1st

UK university to declare
a climate emergency
(bristol.ac.uk/green)

94.5%

of graduates are in work or
further study 15 months
after graduation

(Graduate Outcomes survey 2020)



2nd

most sustainable
city in the world

(Condé Nast Traveller, 2020)

7,235

international students
from 140 different
countries

9th

for teaching in Europe

(THE Europe Teaching Rankings, 2019)

198

COVID-19 research
projects





YOUR STORY STARTS HERE



‘Join us to embark on an exciting journey of personal discovery, to broaden your horizons and discover the reach of your own potential. Our diverse and supportive community will be with you every step of the way as you explore the outstanding experience Bristol can offer. I hope I shall have the pleasure of welcoming you to our University.’

Professor Hugh Brady Vice Chancellor and President

Become part of a world-leading university that does things a bit differently.

Join us as we aim to tackle some of the world’s greatest challenges through innovative research and teaching. Our courses will expand and deepen your interests and open your eyes to new passions and opportunities. Our curriculum is designed to empower you to make meaningful contributions to society, question inequalities and give you the competitive edge whatever the future holds.

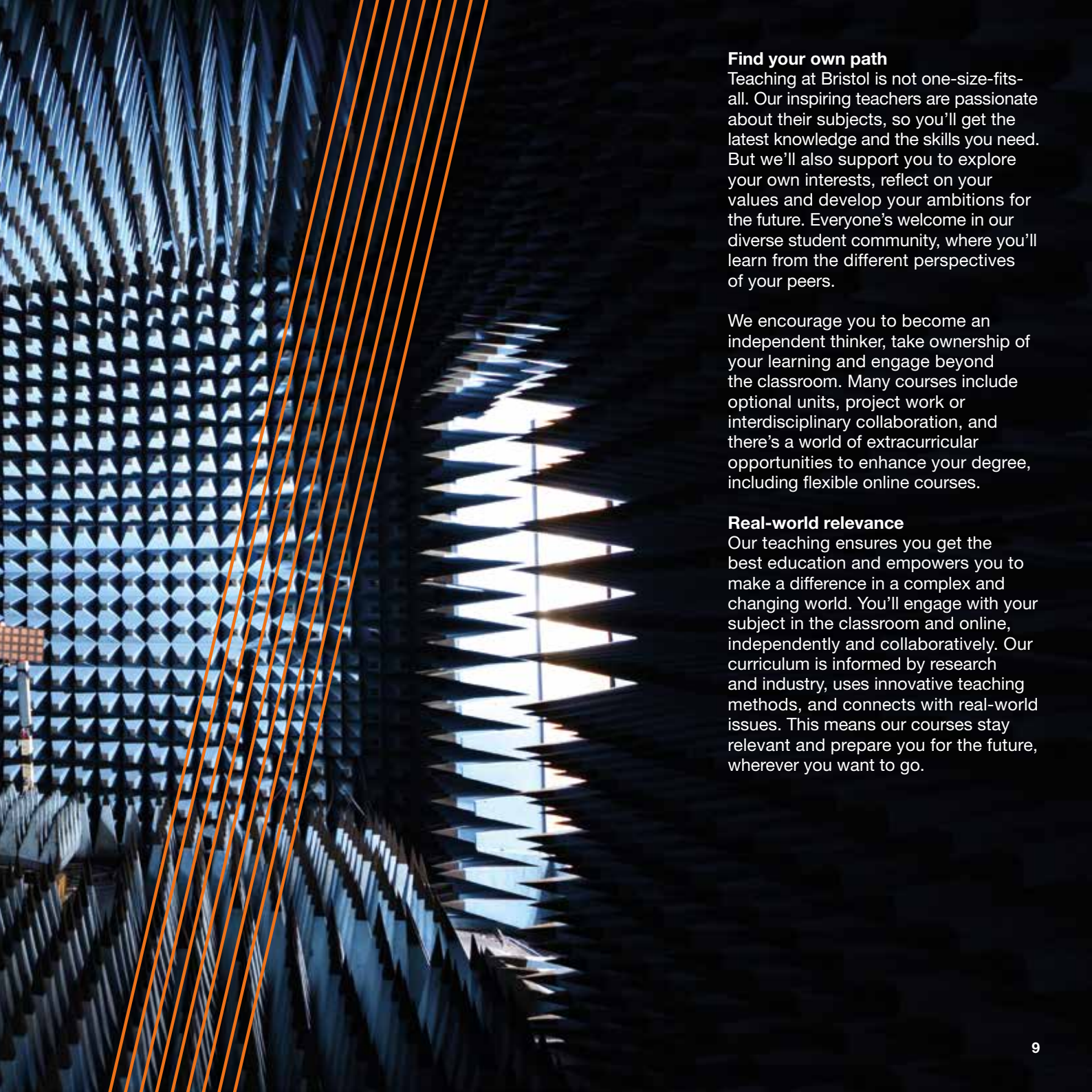
You’ll live and study in the heart of Bristol, one of Europe’s most exciting and creative cities. The city will influence and inform your studies and you’ll find a world of opportunities right outside the lecture theatre.

In this guide we will share with you some of our amazing stories – from the people and places that make us unique – and we hope they inspire you to visit us, ask questions, and find your focus at Bristol.

A person in a purple shirt is working in an anechoic chamber, surrounded by blue pyramidal absorbers. The person is holding a small object, possibly a lightbulb, and is looking at it. The background is a dense field of these absorbers, creating a complex, geometric pattern.

BIG QUESTIONS AND LIGHTBULB MOMENTS

At Bristol, we'll challenge you to experiment, make mistakes and leave your comfort zone. You'll be empowered to ask the big questions – and equipped to find the answers.



Find your own path

Teaching at Bristol is not one-size-fits-all. Our inspiring teachers are passionate about their subjects, so you'll get the latest knowledge and the skills you need. But we'll also support you to explore your own interests, reflect on your values and develop your ambitions for the future. Everyone's welcome in our diverse student community, where you'll learn from the different perspectives of your peers.

We encourage you to become an independent thinker, take ownership of your learning and engage beyond the classroom. Many courses include optional units, project work or interdisciplinary collaboration, and there's a world of extracurricular opportunities to enhance your degree, including flexible online courses.

Real-world relevance

Our teaching ensures you get the best education and empowers you to make a difference in a complex and changing world. You'll engage with your subject in the classroom and online, independently and collaboratively. Our curriculum is informed by research and industry, uses innovative teaching methods, and connects with real-world issues. This means our courses stay relevant and prepare you for the future, wherever you want to go.

Research-led teaching

Bristol degrees are built around our latest research and taught by expert academics.

As a member of the Russell Group, Bristol is one of the UK's leading research-intensive universities. Our academics work on pioneering research across a wide range of subjects, finding innovative solutions to the world's most pressing problems. This translates into fascinating course content, up-to-the-minute teaching, and the chance to be taught by experts at the forefront of their fields.

Through our research-led curriculum, you'll get an insight into how your subject relates to real-world applications. Our researchers cross subject boundaries to make breakthroughs. In the same way, you'll gain deep knowledge of your own subject but also learn how it connects to other disciplines. You might have the opportunity to work alongside our academics on research projects, getting hands-on experience and practical knowledge of your subject.

'I love being taught by the researchers whose books are our required reading. It's amazing to be told that a professor is the definitive expert in a field and to be able to ask them questions whenever you like.'

Sophie BSc Sociology



To read all about our amazing stories scan the QR code or visit bristol.ac.uk/amazing-stories

Children of the 90s

This multi-generational research project has been collecting and studying health data from families since the early 1990s. It's the most detailed study of its kind in the world.

So far, the project has published more than 2,000 papers on a vast range of topics such as diet and fitness, parenting patterns, autism, allergies and self-harm and the impact of genes, environment and major life events on physical and mental health. The data has contributed to breakthroughs, with big impacts on science and policy.

During 2020, participants helped researchers understand more about COVID 19 by completing questionnaires, taking antibody tests and reporting symptoms.

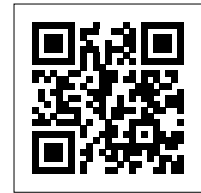
The study will continue to follow participants throughout their lives, as well as the next generation – the Children of the Children of the 90s.



LIVING WALL VORONOI AND BUCKY BALL

'I fell in love with the architecture – I loved the buildings, I loved the way the city moved. Now the Maths building's finished, I absolutely love it. I feel very proud to walk in there.'

Amber BSc Mathematics



To read all about our amazing stories scan the QR code or visit bristol.ac.uk/amazing-stories

In the heart of Bristol

Our University is integrated into the city. Most buildings sit together in our Clifton campus, a quiet and green area, so you can easily walk or cycle between lectures and libraries. Some of Bristol's best shops, cafés, bars and museums are on the doorstep, and regular buses connect the campus to other parts of town.

Historic meets modern

Each of our buildings has a distinctive architecture and character. The Grade II-listed Fry Building, recently refurbished to house the School of Mathematics, features a dynamic Voronoi patterned sunscreen. Arts and humanities students take classes on leafy Woodland Road, in Victorian villas connected by glass pavilions.

Newer additions to the Bristol skyline include the Life Sciences Building, with its living wall, aluminium facade and full-height atrium. Across the street, on the roof of our Nanoscience and Quantum Information Centre, you'll see the 'bucky ball' dome lit up after dark.

Space to unwind

You'll find plenty of places on campus to take a break between classes. Wander through the tranquil Royal Fort Gardens, discover surprising art installations in our courtyards, and enjoy views over the city. Our Bristol SU Living Rooms provide calm spaces to relax and connect with others.

Our new campus

Across the city from Clifton, we are developing a new campus dedicated to collaboration and discovery. The Temple Quarter Enterprise Campus is part of one of Europe's biggest urban regeneration programmes and its teaching and research will focus on digital, business and social innovation.

Explore our campus at
bristol.ac.uk/virtual-tour

World-class campus

The University continually invests in state-of-the-art facilities, resources and technology, so you'll have everything you need for teaching and independent study.

Teaching facilities

Most science and engineering courses include laboratory practicals, and all our labs are fully equipped for hands-on exploration. Some of Bristol's outstanding facilities include our chemistry labs, certified as a Centre for Excellence in Teaching and Learning; Hack Space, allowing creative experimentation in engineering; and our life sciences teaching lab, one of the largest student laboratory spaces in the UK.

Arts, humanities and social science students also have access to excellent resources. Modern languages students can use our language lab, audio editing studio, and extensive foreign film and magazine library. Accounting and finance courses might make use of the Bloomberg Room, equipped with the latest financial services software. And our film and television department houses a dedicated cinema, editing suites, animating facilities, cameras and sound equipment.

Study space

Our nine University libraries house more than 1.4 million volumes of printed books and journals – the largest academic collection in south-west England. There are study spaces across the University for quiet study or group working, some of which are open 24/7. You'll have access to more than 2,000 PCs and Wi-Fi across campus.

Specialist resources

Many departments hold their own extensive archives and special collections. The Theatre Collection is an accredited museum and research centre dedicated to the study of British theatre history, and the Earth Science Collection contains over 100,000 samples of scientific and historical importance. The University's Botanic Garden is home to more than 4,500 plant species and is a fascinating place to study plant evolution.





1.4m

Volumes of printed books and journals in our libraries

24/7

Access to some study spaces across the University campus

4,500

The Botanic Garden is home to more than 4,500 plant species

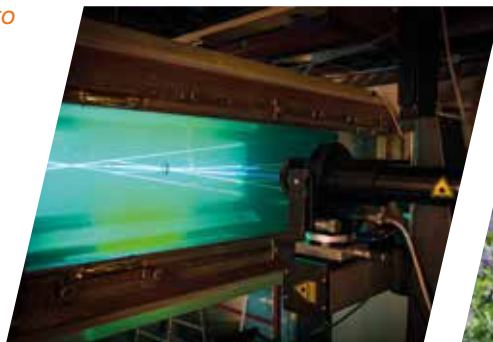
100,000

Earth science samples of scientific and historical importance



'The best part about my course is the ability to use the world-class civil engineering laboratories. In my third-year research project I spent most of my time in the labs using machinery and instruments that many young engineers can only dream of.'

Emily MEng Civil Engineering



AEROSPACE ANIMALS AND AWARDS

'I had a truly amazing experience. The University of Bristol is where I discovered my passion for the space industry.'

Adina (MEng Aerospace Engineering 2019)

Following her MEng Aerospace Engineering, Adina began a graduate role at Saab in Sweden, where she now works as an aerospace engineer as part of the Saab space strategy.

‘A biological sciences degree from the University is held in high esteem. Another draw was having the whole wildlife film scene in the city. A lot of it is just around the corner from the University!’

Sam (BSc Biology 2016)

As part of the BBC’s Natural History Unit, Sam photographs and films animals around the world and, with this picture, won the Wildlife Photographer of the Year: Lumix People’s Choice Award in 2020.

‘Bristol expanded my horizons in terms of the people I met, the places I travelled to and the relationships I built... Those experiences shaped who I am and how I lead people.’

Izzy (BSc Politics 2014) is Managing Director of FounderVine, an award-winning social enterprise.

Image: FounderVine

Read more about Sam, Izzy and Adina:
alumni.blogs.bristol.ac.uk

Your career begins here

The University of Bristol is in the UK top ten for graduate employability.*

A connected Careers Service

Our Careers Service welcomes more than 300 companies each year for a variety of events, including employer presentations, networking events, workshops and careers fairs. Our careers advisers deliver a comprehensive range of services within your academic school, online and from the Careers Service based on Tyndall Avenue. Talks, webinars and individual appointments will help you assess and develop your skills and perfect your application and interview techniques. Through our online careers portal, mycareer, you can find part-time and vacation work, internships and graduate jobs and access hundreds of careers resources.

Industry-endorsed skills award

Recognising the skills you can develop through work experience, volunteering and extracurricular activities, the Bristol PLUS Award provides a framework to help you develop your employability and is recorded on your degree transcript. The award is endorsed by 19 leading graduate recruiters, including FDM, HMRC and British Red Cross.

Professional partnerships

Our enviable connections to top graduate recruiters facilitate many employability initiatives, such as the University of Bristol Law School's Professional Mentoring Scheme. The scheme connects top-performing students with mentors in law firms and chambers for professional insight, application support and placements. Bristol alumni span the globe and our exclusive online space, Bristol Connects, offers a convenient way to make contact with our professional and country-specific alumni networks: bristol.ac.uk/alumni

Get ahead with work experience

Work experience, internships and volunteering are recognised routes to graduate positions and companies in a wide range of sectors promote their opportunities to Bristol students through our mycareer and myopportunities portals. The Careers Service works with small and medium enterprises (SMEs) to provide internships in smaller companies.

*QS Graduate Employability Ranking 2020



Top 10

Most targeted university by leading graduate employers (High Fliers Research, 2021)



'I completed the Bristol PLUS Award, which was massively helpful in my applications for internships. The skills I learned assisted me at interview, where I was successful in gaining a position.'

Rosie BA History

300

More than 300 employers attend our annual careers events



Calling all innovators and entrepreneurs

The Basecamp Enterprise Team provides one-to-one guidance and workshops to help you develop an enterprise mindset, access funding and create a business plan. Through our New Enterprise Competition, startups can apply for grant funding at different stages of their journey, from trialling initial ideas to pitching for up to £20,000 of growth funding.

Real-world experience

Applying your degree to real-world challenges in industry can bring your subject to life.

Spending time working in industry as part of your course can be an unforgettable experience. Throughout your placement you will work on live projects as a valued member of a team, applying your subject knowledge in practical ways while gaining invaluable insight into your discipline.

Study in industry

We offer 23 courses that include a 'Study in Industry' or professional placement option. Using our considerable links with industry, we will help you find a position that complements your subject focus and suits your interests.

Gaining professional experience

Students studying social sciences or law can access the Professional Liaison Network, where you can gain real-world insight and experience from professionals working in fields relevant to your academic study. The Industrial Liaison Office in the Faculty of Engineering arranges mentoring, networking opportunities and paid summer internships with a number of companies. Placements

typically last six to 12 weeks and help you explore careers in the engineering or technology sectors: bristol.ac.uk/engineering/ilo

Centre for Innovation and Entrepreneurship

The Centre for Innovation and Entrepreneurship offers undergraduate integrated master's degrees in 14 subject areas, combining a variety of degree disciplines with the study and practice of innovation. The purpose-built workspace includes a studio and prototype workshop where students work in multidisciplinary groups on challenges set by staff from industry, delivering projects for real clients.





Credit: Y. Beletsky (LCO)/ESO

'I undertook a Year in Industry working as a science communicator, where I encountered ideas well beyond the scope of my degree. The experience prompted personal and professional development; without it I wouldn't be where I am now.'

Justin (MSci Physics with a Year in Industry 2020)
Science Journalism Intern, European Southern Observatory

New horizons, global perspectives

Each year more than 700 Bristol students gain a new perspective on their degree through spending time abroad.

At Bristol you will have many opportunities to experience a new culture and boost your personal development through overseas travel.

Depending on your course, you could study abroad for a semester or a full year of your degree or take part in a shorter programme during the summer. Study at one of our 150 prestigious partner universities – currently including the University of California, the University of Sydney, the National University of Singapore and the University of Copenhagen – or organise a work placement, internship or volunteering opportunity.

Whatever you choose, our Global Opportunities team will be on hand to support you every step of the way.

Build new skills

Spending time abroad is an adventure but it is also an investment in your future. Research shows that students who spend time overseas are more likely to be employed six months after graduation and earn higher starting salaries.*

*Gone International: 'Rising Aspirations', Universities UK, 2019

A year or semester abroad

All our modern languages degrees include a year abroad. Course titles including 'Study Abroad in a Modern Language' feature a year studying overseas in a foreign language, while 'Study Abroad' courses offer overseas study taught in English. Alternatively, several departments offer the opportunity to spend a semester overseas during your degree.





Work abroad

If you study a modern language or your course includes a year in industry, you may have the opportunity to work overseas as part of your degree. The Careers Service also supports students who are interested in working overseas during the summer break or after graduation.

Summer and short-term programmes

There are plenty of other opportunities to go abroad with our shorter programmes or summer schools. Exciting options currently include a Chinese language and culture course in Beijing and a global leadership programme with Santander in Madrid. You can also create your own programme and study, work or volunteer abroad during the summer.

Financial help

Many of our programmes are fully or partly funded and a range of scholarships is available to help with the costs of going abroad. You may also be eligible for student loans and grants while you are away.

Health and safety of placements

We follow the travel advice provided by the UK's Foreign, Commonwealth & Development Office in approving and monitoring all overseas placements. Please visit our website for the latest information: bristol.ac.uk/go-abroad

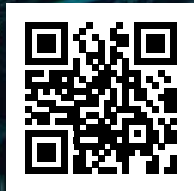
'My year abroad has been spent studying topics I never thought I'd encounter, going to places I never knew existed and surprising myself in all the things I didn't know I could do or be.'

Zoe studied abroad at McGill University, Canada



OFFBEAT ONE-OFF AND ON THE RISE

A lively city to explore and call home, Bristol is ready to welcome you.



To read all about
our amazing stories
scan the QR code
or visit [bristol.ac.uk/
amazing-stories](http://bristol.ac.uk/amazing-stories)

City of surprises

Bristol is a laid-back city that never sleeps, a welcoming home and a place that celebrates difference. Bursting with creativity and character, Bristol has a unique feel.

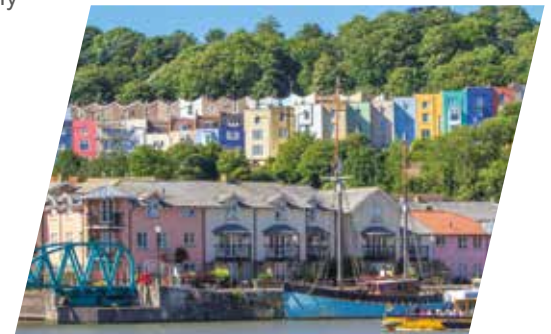
Enjoy gigs on a cargo ship, challenge friends to a tournament at a board game café, or marvel at a skyline dotted with 100 hot air balloons. Bristol is a playful city.

Explore the countless independent shops, breweries, bakeries and boutiques that line the city's walkable, friendly neighbourhoods. Wander through the bustling harbourside where refurbished shipping containers house a foodie haven.

Bristol's arts inspire. Catch a new release at one of the city's many cinemas or a matinee at the Bristol Old Vic. Pop into an artist's open studio or Europe's largest street art festival, Upfest. Enjoy live music at grassroots venues, warehouse clubs and world-class concert halls.

Relax in one of Bristol's 450 gardens, parks and green spaces. Just outside the city limits, hike or cycle through countryside and bluebell woods – or even catch a wave at a surfing lake. Bristol gives you space to breathe.

Get involved with the city's green initiatives and be spurred on by the innovative startups and creative economy that keep moving us forward. Find your place in this inclusive and multicultural city. Bristol will quickly feel like home.





No.1

*Bristol was awarded
the Greenest UK
City in 2020*

'You might be looking at amazing street art in Stokes Croft one minute and then be in Clifton Village having a cream tea overlooking the Suspension Bridge the next. The fact that there's always something to do and somewhere you'll fit in is why I love Bristol.'

Mary MSci Neuroscience

← Bristol Veterinary School, Langford (14 miles south of Bristol)



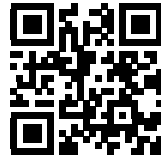
Our Bristol neighbourhood

- 1. Tyndall Avenue, University of Bristol
- 2. Wills Memorial Building
- 3. Park Street
- 4. Harbourside
- 5. Wapping Wharf
- 6. Clifton Village

Temple Quarter Enterprise Campus →



To take a 360° tour of our campus scan the QR code or visit bristol.ac.uk/virtual-bristol



Travel times by train

London: 1h 40m

Exeter: 1h

Cardiff: 1h

Swindon: 40m

Birmingham: 1h 30m

Manchester: 3h 10m

Our location

Our main campus is near the heart of the city, with plenty to explore right outside the lecture theatre.

It's only a short stroll to the leafy squares and café culture of Georgian Clifton or buzzing shops and lunch spots of Park Street. Just down the hill are the harbourside's many museums, outdoor markets and an independent cinema. Cross the swing bridge to sample the exciting cuisine of Wapping Wharf, an ideal spot for waterside hangouts.

Home to people from more than 180 countries, Bristol's distinct neighbourhoods reflect the city's diverse character. Venture further to find the street art and music venues of Stokes Croft, famous carnival of St Paul's, the indie shopping district of Gloucester Road, community-spirited cultural hub of Old Market, or multicultural eats of Easton.

Beyond Bristol

Less than two hours from London and surrounded by beautiful countryside, Bristol is ideally situated for exploring the South West while remaining well connected to major cities.

Your home from home

Our Student Residential Villages offer a ready-made community that will help you settle into student life.

Choosing where to live

Our residences are more than just a place to eat and sleep; they are exciting communities that will become your home for the first year. You will mix with students from around the world and meet people who could become your friends for life.

We have accommodation to suit all tastes, from shared Georgian townhouses in colourful Clifton to modern residences right in the city centre.

Where you choose to live will depend on the experience you are seeking and your budget.

You can select your preferences from a choice of new or historic, large or small, and catered or self-catered accommodation.

Our residences are located in three distinct Residential Villages in Stoke Bishop, the city centre and Clifton and all are within walking distance of the main university campus in Clifton.

Student Residential Village North

This is a vibrant student village of six residences on the edge of The Downs in Stoke Bishop.

Residences include catered and self-catered accommodation housing around 2,300 undergraduates.

Residences range in size from 230 places at Durdham Hall to over 740 places at Hiatt Baker. Each residence has its own bar or common room, study room and access to computer facilities.

There is a dedicated bus service to and from the main campus and undergraduate students are issued with a bus pass.

Student Residential Village East

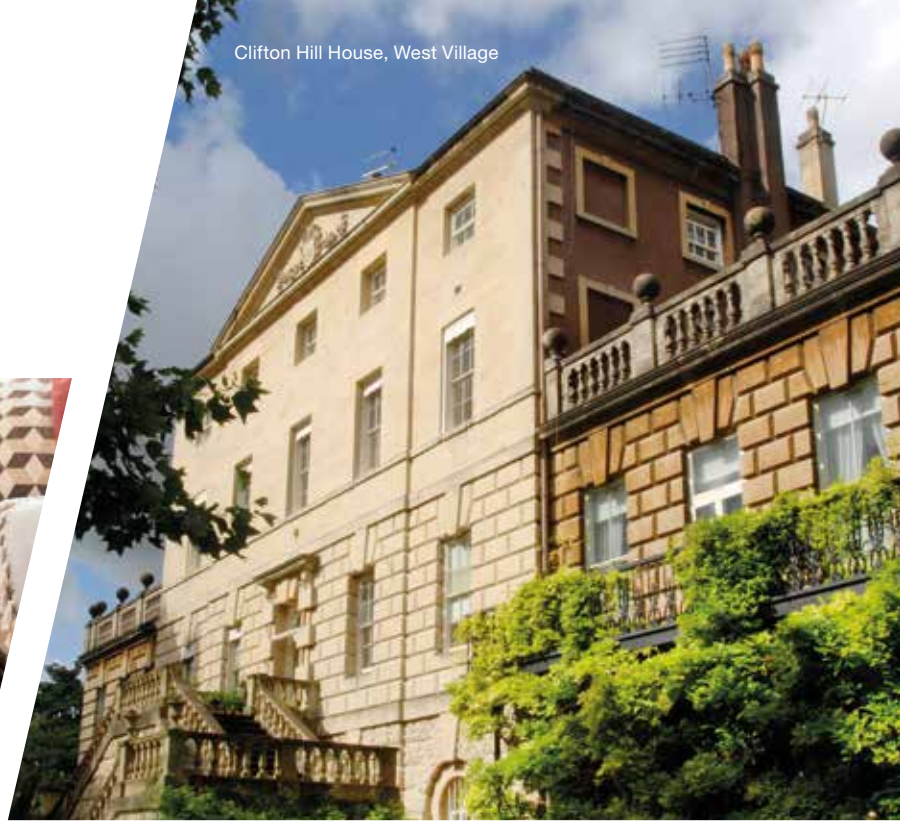
Around 2,200 undergraduates live in our centrally located, self-catered residences. Some of these residences are run in partnership with private student housing providers. The University, city centre and harbourside are all on the doorstep.

Hiatt Baker,
North Village



6,000

Places available for new undergraduates



Student Residential Village West

Four large residences, including one catered residence, and several small properties accommodate around 1,200 undergraduates near the independent shops, cafés and restaurants of Clifton Village. Residences range in size from 30 places at Hillside Woodside to more than 220 places at Clifton Hill House. Most residences have their own bar or common room.

'University accommodation is a wonderful way to meet people. I stayed in the East Village residences in the city centre and it has been the perfect balance between study and socialising!'

Guneesha MSci Management with Innovation



Joining a community

Each Student Residential Village features a Student Support Centre, staffed by live-in members of staff and open 24 hours a day, seven days a week. These centres form the heart of a network of support services, which includes live-in Senior Residents, who are approachable, friendly and on hand to offer support.

All residences have a Junior Common Room (JCR), a student-led social committee that organises events and activities throughout the year, such as fancy-dress nights, pub quizzes and all-day music festivals. You will be able to suggest events to your student representative and take an active role in organising them.

Representatives from your residence will take part in Students' Union Council meetings, help you get involved with projects in halls and the wider community and introduce you to student networks and initiatives.

Active Residences

The Active Residences programme recognises the importance of regular exercise to help reduce stress, maintain physical health and improve concentration. Each village runs a programme of free fitness classes and yoga to help you stay fit and feel good. There is no membership fee and classes are suitable for all fitness levels, with a range of activities to suit every taste:

bristol.ac.uk/sport/student/residences

Visit before you apply

Depending on COVID-19 restrictions, you may be able to visit some of our residences at the undergraduate open days in 2021 and we will run virtual open days if in-person events are not possible. You can take a virtual tour of our residences right now at

bristol.ac.uk/accommodation/ug

After your first year

Most students move into private accommodation after their first year. The most popular areas for students are those close to the University: Kingsdown, Clifton, Cotham and Redland. The cost of renting privately will depend on the size, quality and location of the property you choose.

If you are willing to venture a little further out, you will find cheaper rents. Costs vary between £350 and upwards of £450 per person, per calendar month, excluding bills.

Living in private accommodation

If you plan to live at home or in private accommodation, you will have plenty of opportunity to meet new people at university events.

Accommodation Office

Our Accommodation Office can help you find somewhere to live and offer advice on university allocated and private rented accommodation throughout your time at Bristol. We provide specialist advice, for example for students with disabilities or with young families, and will do everything we can to make sure you feel at home throughout your time at Bristol.

Room type	Weekly costs*	Annual costs*
Self-catered		
Standard single	£111-£172	£4,773-£7,393
En suite	£167-£180	£7,181-£7,740
Catered		
Standard single	£187-£204	£8,041-£8,772
En suite	£207-£217	£8,901-£9,331

Typical accommodation fees for a 43-week tenancy (based on 2020/21 figures).

**Figures rounded to nearest pound.*

Accommodation fees include a bus pass, internet, heating and electricity costs. Additional compulsory costs include insurance and a JCR fee.

Orchard Heights bedroom



Orchard Heights, East Village



Waverley House, East Village



SKYDIVING SOCIALISING AND SUPPORT



'Being a Bristol student is about so much more than your course. I have been able to push myself out of my comfort zone and try so many new things.'

Rosie BA History

bristol.ac.uk/amazing-stories



Wellbeing

We offer a range of services designed to help you stay well, feel supported and get the most out of your time here.

Making the transition to university can be challenging but we will support you in managing your physical, emotional and mental health. At Bristol, we aim for you to feel independent but not alone.

In your department

As well as your personal tutor, a team of Student Wellbeing Advisers in your school can provide non-clinical advice about personal or emotional challenges or can refer you to other services and help find the right approach for you.

Specialist services and support

Our on-campus Students' Health Service provides the full range of NHS GP services, including getting a prescription, vaccinations, mental health and sexual health services. All students are eligible to register at this practice. Our Student Counselling Service offers ways to maintain positive mental health, including self-help materials and workshops. Individual and group counselling is available for issues that directly impact your ability to study. If you are Black, Asian or Minority Ethnic and would like support with issues related to culture, race and ethnicity, you can also access Nilaari, a counselling service for BAME students.

If you're not sure where to get support, our Wellbeing Access service provides a single point of contact to find out more: bristol.ac.uk/wellbeing

Looking after yourself

You will find a huge range of free resources on our health and wellbeing website, including videos, podcasts and our free student health app. Shout (crisis messenger) is a free mental health support service offering trained help 24 hours a day.

Our free or low-cost sport and activity programmes can help you keep fit and stay healthy.



'I have had great support from the wellbeing service. My adviser is great. She helps me break down my week and really try and focus on what is important.'



Finding space on campus

There are lots of spaces around campus to relax by yourself or build relationships with peers. These include dedicated calm spaces, the Bristol SU Living Rooms and mindfulness activities in our libraries.

The Multifaith Chaplaincy offers confidential pastoral and spiritual support and a welcoming space for all faiths and none. Student societies, such as the Wellbeing Network, provide a place to talk about wellbeing and connect with others.



Discover your potential

We provide a range of academic support to help you recognise your unique learning style, discover new skills and get the most out of your studies.



‘The University has supported me in my academic career by running weekly support sessions and through my personal tutor, who is someone I can go to about anything.’

Lucy BSc Psychology in Education

Through online resources, tutorials, and drop-in sessions, we will help you develop your academic and transferable skills so that you can confidently progress to university-level study.

Personal tutor

On most of our undergraduate courses you will be assigned a personal tutor who will offer advice on academic matters and how to access specialist support. You will also work with them on your personal development planning.

Skills development and training

The Study Skills service provides online interactive resources to complement your academic learning.

These are supported by one-to-one tutorials and small-group workshops on topics including time management; critical writing; exam and revision techniques; and academic reading. You may even be able to learn a new modern language as part of your course through our University-Wide Language Programme.

Peer support

Through our peer support schemes you can talk to trained student leaders about student life. Peer-assisted study sessions and a peer mentoring scheme are available to help you settle in during your first months at Bristol.

Mature students

Our Mature Students’ Adviser and Mature Student Advocates provide dedicated support to help you make the best possible start, including welcome events, meet ups and peer mentoring.

Celebrating cultures

We support international students from the moment you accept an offer right through to graduation. Our Global Lounge celebrates multiculturalism through a programme of social events and cultural celebrations, providing information and advice for international students coming to Bristol and all students seeking opportunities overseas.

Disability Services

Students who come to Bristol with ongoing health or mental health conditions, sensory impairments, mobility or specific learning difficulties can access additional advice and support from Disability Services. Contact us early to find out what support is available and how to access it:

bristol.ac.uk/disability-services

From Tai Chi to TEDx

As a student here, you'll be a member of Bristol Student Union (SU), which represents the student voice, provides advice and support and offers access to more than 400 clubs, societies and projects.

Your students' union

Bristol SU is an organisation for all students led by elected student reps working together to help you make the best of your time in Bristol.

Bristol SU supports more than 400 societies, sports clubs and volunteering projects, including everything from skydiving to anime and baking to football. It organises hundreds of events throughout the year, from club nights to quizzes and TEDx talks. It also provides services, including advice about academic issues and letting agency questions.

Welcome Week

In your first week Bristol SU runs a festival to welcome you to the University featuring events each day in the SU building and venues across the city. The Welcome Fair is a showcase where you can meet society and sports club members and find out what's on offer.

Venues

The Richmond Building is home to Bristol SU and offers extensive facilities, including the Balloon Bar, two theatres, a pottery studio, music practice rooms, a radio studio, dance studios and a 32-metre swimming pool. It also houses

one of the city's biggest gig venues, the Anson Rooms, which has hosted big-name acts including Amy Winehouse, Ed Sheeran, Gentleman's Dub Club, and Bob's Comedy Funhouse (RuPaul's Drag Race).

The SU has several spaces in Senate House at the heart of the campus, including the Living Room, a space to take a break and unwind. The Bristol SU loft and The Beckford, the SU bar, are new spaces where you can study or relax and meet friends.

Representation

A full-time officer team and more than fifteen networks with chairs elected by you to represent your views and needs to the SU, the University and the National Union of Students. These reps look after a variety of areas, including academic issues and the running of the SU as well as equality and diversity issues. There are lots of ways to make your voice heard, such as voting in elections, contributing to research or running as an elected rep.





'Find a society you like. In a society, you're going to meet like-minded people... it's one of the best ways to make friends. Bristol's got loads of societies – there's lots of scope to meet people and make friends.'

Amber BSc Mathematics



Volunteering

Bristol SU supports 14 student-led projects which are all run by passionate student volunteers. The SU also connects hundreds of students with volunteering opportunities across Bristol, giving you the chance to make a positive impact on the city you call home.

Keep fit, make friends, find your focus

Our wide range of activities and excellent facilities will help you lead a healthy, active lifestyle and benefit from the positive effects of sport.

Something for everyone

Taking part in sport can help you settle into university life. It's a great way to meet new people and make lasting friendships. You can also develop your employability skills with our sports leadership and volunteering programmes.

Whether you are looking to join our Performance Squad to compete at the highest level or just want to keep fit, we offer something for you. Our range of membership packages provide flexible payment options and access to our extensive sports facilities, including:

- the Indoor Sports Centre on the Clifton campus, which includes a state-of-the-art gym, fitness studios, a double-sided sports hall and a sports medicine clinic;
- a 32-metre swimming pool in the Richmond Building;

- Coombe Dingle Sports Complex, our outdoor facility, featuring grass and artificial pitches, netball and tennis courts, a four-court indoor tennis centre and a strength and conditioning suite;
- a boathouse at Saltford on the River Avon.

We also have an extensive virtual offer for our community. The University of Bristol Sport app provides access to live online classes and a library of pre-recorded sessions.

Sports clubs and programmes

The University and Bristol SU provide more than 70 student-led sports clubs, ranging from football to archery. Bristol has consistently held a top ten position in the British University College Sport (BUCS) competition. There are plenty of opportunities to play sport for fun through the intramural programme and as part of our inclusive and beginner-friendly B:Active sessions.

Performance Sport

The Performance Squad Team supports and develops student athletes, making it easier for them to combine their sporting career with academic study. Members of the Scholar's programme are supported through a personal action plan, working with strength and conditioning coaches, and nutrition, physiotherapy and sports psychology experts. The University's sporting heritage includes Olympians, Commonwealth gold medal winners and England representation in a range of sports.

Scholarships

Vice-Chancellor's scholarships, offering £1,500 to £3,000 a year, are open to prospective and current students who are competing at a junior, senior, national or international level within their sport.



'It's given me the opportunity to spend time with people I wouldn't have before. Once you start, you find there's people of every level and you can find friends anywhere.'

Anna BA Hons English



FOCUS SPECIALISE AND EXPLORE

'Bristol strives to be the best.
And that's exactly how I like to
be as an individual, just trying
to push boundaries and be the
best I can.'

Rhodri BSc Biochemistry



Choosing your course

About our courses

Our undergraduate courses are either single honours degrees or joint honours, allowing you to study two subjects alongside each other.

Social sciences and arts courses (except for modern languages) generally take three years to complete and lead to a bachelor's (BA, BEng, BSc or LLB) degree.

Most science and engineering courses offer a choice of a three-year bachelor's or four-year integrated master's (MArts, MEng, MSci) degree. If you are unsure which course to apply for, we recommend applying for the master's course in order to secure four years of financial support. Dentistry, medicine and veterinary science courses usually take five years to complete.

Typical offers

You can view the A-level and International Baccalaureate (IB) grades we usually request when making an offer on pages 51 to 65. We consider applications on their individual merit and the entry requirements shown are indicative.

We list typical offer information for some other qualifications online, including the Welsh Baccalaureate, Cambridge Pre-U principal subjects, SQA Highers and Advanced Highers, BTEC Extended Diploma and Access to HE Diploma: bristol.ac.uk/ug-study

Where course entry requirements include specific subjects, these will be detailed in our online course finder and within the course's admissions statement, which is linked from the course web page.

Some courses require a specific level of literacy or numeracy skills. Typically, these are set at GCSE level or equivalent.

Contextual offers

We want to attract students from all backgrounds to Bristol, so we will consider your educational context when considering your application. We may make a contextual offer of up to two grades lower than the standard entry requirements in recognition of factors that mean students may be less likely to attend university. Find out more at bristol.ac.uk/contextual-offers

International qualifications

We accept a wide range of international qualifications and welcome applications from international students.

For information about accepted international qualifications, please visit our international web pages at bristol.ac.uk/international/countries or contact our Enquiries team.

English language requirements

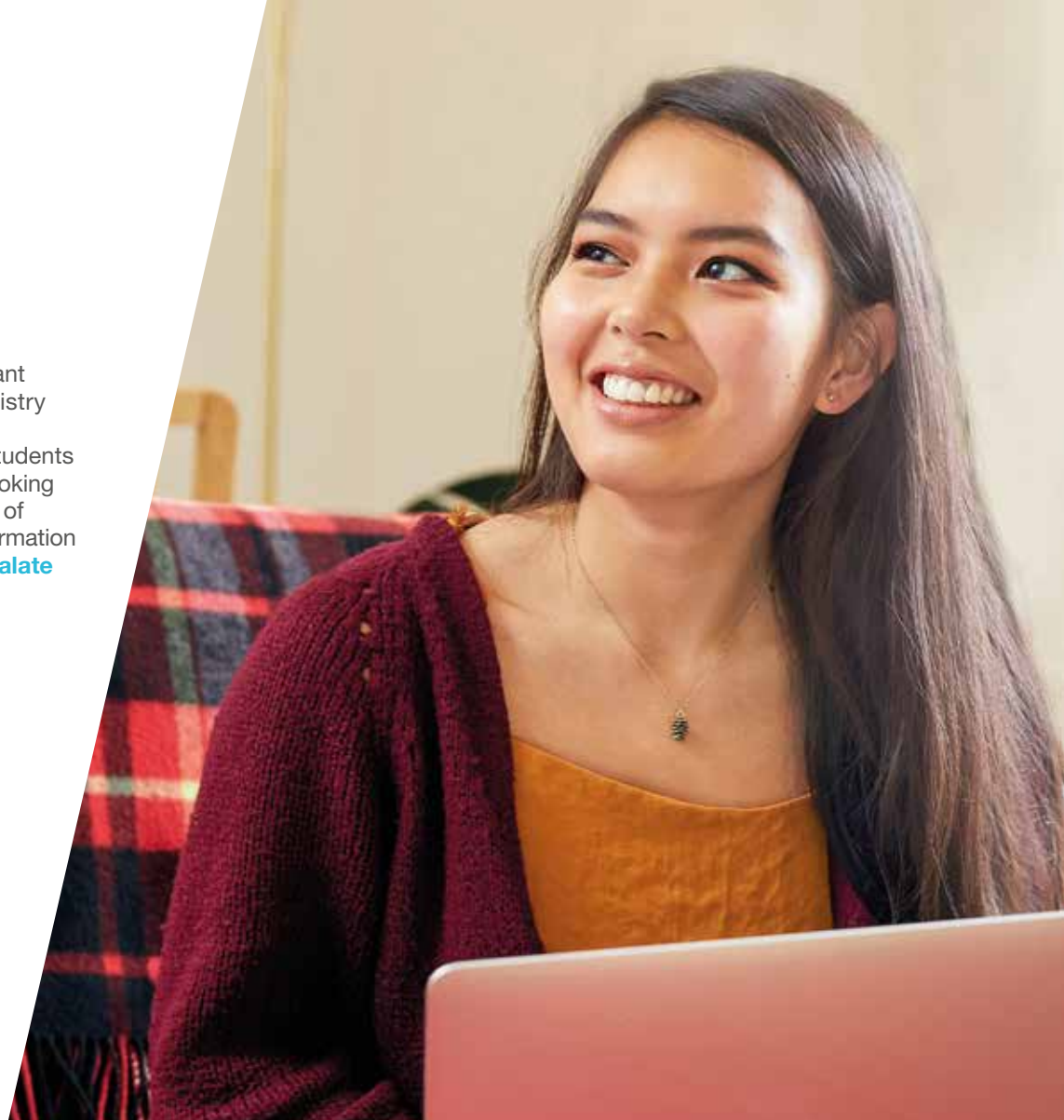
Each course specifies one of seven language profiles, A to G, which is the level of English required for that course if English is not your first language. The language profile requirement is listed with other entry requirements on the online course page and you can find more information about each profile at bristol.ac.uk/study/language-requirements

The University's Centre for Academic Language and Development offers a range of courses to help students improve their level of English: bristol.ac.uk/academic-language

This guide contains information for students planning to start university in autumn 2022. We make every effort to ensure all details are correct at the time of going to press (February 2021). However, since this information is subject to change, please check the University's website for the latest updates: bristol.ac.uk/ug-study

Intercalation

We support our students who want to enhance their medicine, dentistry or veterinary science degrees by intercalating, and we welcome students from other universities who are looking to intercalate at Bristol. For a list of available courses and further information please visit: bristol.ac.uk/intercalate



'Bristol really encourages you to find your passion in your education. As you go through your degree, you can hone in on what you're really interested in.'

Emma BSc Economics

Find your passion

Biology

Biochemistry
Cancer Biology and Immunology
Dental Hygiene and Therapy
Dentistry
Medicine
Neuroscience
Pharmacology
Physiological Science
Veterinary Science
Zoology

Chemistry

Biochemistry
Biochemistry with Medical Biochemistry
Biomedical Sciences
Cancer Biology and Immunology
Cellular and Molecular Medicine
Chemical Physics
Chemistry
Chemistry with Scientific Computing
Dentistry
Medical Microbiology
Medicine
Pharmacology
Veterinary Science
Virology and Immunology

English

Classics
Comparative Literatures and Cultures
English
Film and Television
Law
Liberal Arts
Philosophy
Politics and International Relations
Theatre and Film

History

Ancient History
Archaeology and Anthropology
Classical Studies
History of Art
Law
Liberal Arts
Politics and International Relations
Religion and Theology

Languages

Comparative Literatures and Cultures
French
German
Hispanic Studies
International Business Management
and French/Spanish/German
Italian
Modern Languages
Portuguese
Russian
Spanish

Mathematics and/or Physics

Accounting and Finance
Aerospace Engineering
Biochemistry
Biology
Biomedical Sciences
Cellular and Molecular Medicine
Chemical Physics
Chemistry
Civil Engineering
Computer Science
Dentistry
Economics and Econometrics
Economics and Management
Electrical and Electronic Engineering
Engineering Design
Engineering Mathematics
Geography
Geology
Geophysics
Mathematics
Mechanical Engineering
Medical Microbiology
Philosophy and Economics
Physics with Astrophysics
Physics with Scientific Computing
Physiological Science
Theoretical Physics
Veterinary Science
Virology and Immunology
Zoology

Focusing your interests down to one degree can be difficult. Have a look at the suggestions here, which are based on the subjects you may be studying at A-level.

Music

Liberal Arts
Music

Psychology

Childhood Studies
Criminology
Education Studies
Marketing
Neuroscience
Psychology
Psychology in Education

Religious Studies

Classical Studies
Liberal Arts
Philosophy
Religion and Theology

Science

Applied Anatomy
Biochemistry
Biology
Biomedical Sciences
Cancer Biology and Immunology
Civil Engineering
Environmental Geoscience
Geography
Geology
Medical Microbiology
Neuroscience
Palaeontology and Evolution

Science (continued)

Pharmacology
Physiological Science
Plant Sciences
Psychology
Veterinary Nursing and Companion
Animal Behaviour
Veterinary Science
Virology and Immunology
Zoology

Sociology

Childhood Studies
Criminology
Education Studies
Management
Social Policy
Sociology



Navigating the course listing

Find a list of all our undergraduate degree courses from pages 51 to 65. Our courses are grouped into subject areas. Scan the QR code to view detailed information about studying each subject at Bristol, including more about our facilities, industry links and career prospects.

Degree courses are linked from subject pages and include detailed information about course structure and entry requirements.

Scan the QR code to visit the subject page in our online course finder.



PSYCHOLOGY

bristol.ac.uk/ug22-psychology

BSc Psychology
MSci Psychology with Innovation
MSci Psychology and Neuroscience

UCAS code	Course length	Typical offers			
		A-level	A-level (ctx)	IB	IB (ctx)
C801	3 years	A*AA	AAB	38	34
C804	4 years	A*AA	AAB	38	34
CB81	4 years	A*AA	AAB	38	34

You can take some of our degrees combined with Innovation or Quantitative Research Methods.

Find typical offers for other UK qualifications on course pages online.





ACCOUNTING AND FINANCE

bristol.ac.uk/ug22-accounting

BSc Accounting and Finance
 BSc Accounting and Finance with Professional Placement
 BSc Accounting and Finance with Study Abroad
 BSc Accounting and Management
 BSc Accounting and Management with Professional Placement
 BSc Accounting and Management with Study Abroad
 BSc Economics and Accounting
 BSc Economics and Accounting with Professional Placement
 BSc Economics and Accounting with Study Abroad
 BSc Economics and Finance
 BSc Economics and Finance with Study Abroad
 BSc Finance

UCAS code	Course length	Typical offers			
		A-level	A-level (ctx)	IB	IB (ctx)
NN43	3 years	AAA	ABB	36	32
†	4 years	AAA	ABB	36	32
NN46	4 years	AAA	ABB	36	32
NN42	3 years	AAA	ABB	36	32
†	4 years	AAA	ABB	36	32
NN45	4 years	AAA	ABB	36	32
LN14	3 years	AAA	ABB	36	32
†	4 years	AAA	ABB	36	32
LN16	4 years	AAA	ABB	36	32
LN13	3 years	AAA	ABB	36	32
LN15	4 years	AAA	ABB	36	32
N300	3 years	AAA	ABB	36	32



ANCIENT HISTORY

bristol.ac.uk/ug22-ancienthistory

BA Ancient History

UCAS code	Course length	Typical offers			
		A-level	A-level (ctx)	IB	IB (ctx)
V110	3 years	AAB	BBB	34	31



ANTHROPOLOGY AND ARCHAEOLOGY

bristol.ac.uk/ug22-archanth

BA Anthropology

BA Archaeology and Anthropology

MArts Anthropology with Innovation

UCAS code	Course length	Typical offers			
		A-level	A-level (ctx)	IB	IB (ctx)
XD49	3 years	AAB	BBB	34	31
VL46	3 years	AAB	BBB	34	31
XD50	4 years	AAB	BBB	34	31



APPLIED ANATOMY

bristol.ac.uk/ug22-anatomy

BSc Applied Anatomy

UCAS code	Course length	Typical offers			
		A-level	A-level (ctx)	IB	IB (ctx)
B112	3 years	ABB	BBC	32	29



ARTS AND SOCIAL SCIENCES, FOUNDATION IN

bristol.ac.uk/ug22-FYASS

Foundation in Arts and Social Sciences (Cert HE)

UCAS code	Course length	Typical offers			
		A-level	A-level (ctx)	IB	IB (ctx)
††	1 year	See bristol.ac.uk/ug22-FYASS			



AEROSPACE ENGINEERING

bristol.ac.uk/ug22-aero

BEng Aerospace Engineering
 MEng Aerospace Engineering
 MEng Aerospace Engineering with a Year in Industry
 MEng Aerospace Engineering with Study Abroad
 MEng Aerospace Engineering with Study Abroad in a Modern Language

UCAS code	Course length	Typical offers			
		A-level	A-level (ctx)	IB	IB (ctx)
H405	3 years	A*AA	AAB	38	34
H410	4 years	A*AA	AAB	38	34
†	5 years	A*AA	AAB	38	34
†	4 years	A*AA	AAB	38	34
H401	4 years	A*AA	AAB	38	34



BIOCHEMISTRY

bristol.ac.uk/ug22-biochem

BSc Biochemistry
 BSc Biochemistry with Medical Biochemistry
 BSc Biochemistry with Molecular Biology and Biotechnology
 BSc Biochemistry with Study in Industry
 MSci Biochemistry
 MSci Biochemistry with Medical Biochemistry
 MSci Biochemistry with Molecular Biology and Biotechnology

UCAS code	Course length	Typical offers			
		A-level	A-level (ctx)	IB	IB (ctx)
C700	3 years	AAA	AAC	36	32
C720	3 years	AAA	AAC	36	32
C790	3 years	AAA	AAC	36	32
†	4 years	AAA	AAC	36	32
C701	4 years	AAA	AAC	36	32
C721	4 years	AAA	AAC	36	32
C791	4 years	AAA	AAC	36	32



BIOLOGICAL SCIENCES

bristol.ac.uk/ug22-biology

BSc Biology
 BSc Plant Sciences
 BSc Zoology
 MSci Biology
 MSci Plant Sciences
 MSci Zoology

UCAS code	Course length	Typical offers			
		A-level	A-level (ctx)	IB	IB (ctx)
C100	3 years	AAB	BBB	34	31
C201	3 years	AAB	BBB	34	31
C300	3 years	AAB	BBB	34	31
C103	4 years	AAA	ABB	36	32
C203	4 years	AAA	ABB	36	32
C303	4 years	AAA	ABB	36	32



BIOMEDICAL SCIENCES

bristol.ac.uk/ug22-biomedical

BSc Biomedical Sciences

UCAS code	Course length	Typical offers			
		A-level	A-level (ctx)	IB	IB (ctx)
B900	3 years	AAA	AAC	36	32



BUSINESS AND MANAGEMENT

bristol.ac.uk/ug22-management

BA International Business Management and French
 BA International Business Management and German
 BA International Business Management and Spanish
 BSc Accounting and Management
 BSc Accounting and Management with Professional Placement
 BSc Accounting and Management with Study Abroad
 BSc Business and Management
 BSc Business and Management with Study Abroad
 BSc Business and Management with Study Abroad in a Modern Language
 BSc Economics and Management
 BSc Economics and Management with Study Abroad
 BSc International Business Management
 BSc International Business Management with Study Abroad
 BSc International Business Management with Study Abroad in a Modern Language
 MSci Management with Innovation

UCAS code	Course length	Typical offers			
		A-level	A-level (ctx)	IB	IB (ctx)
NR11	4 years	AAA	ABB	36	32
NR12	4 years	AAA	ABB	36	32
NR14	4 years	AAA	ABB	36	32
NN42	3 years	AAA	ABB	36	32
†	4 years	AAA	ABB	36	32
NN45	4 years	AAA	ABB	36	32
N200	3 years	AAA	ABB	36	32
N201	4 years	AAA	ABB	36	32
4H56	4 years	AAA	ABB	36	32
LN12	3 years	AAA	ABB	36	32
LN17	4 years	AAA	ABB	36	32
N120	3 years	AAA	ABB	36	32
N121	4 years	AAA	ABB	36	32
N122	4 years	AAA	ABB	36	32
N204	4 years	AAA	ABB	36	32



CELLULAR AND MOLECULAR MEDICINE

bristol.ac.uk/ug22-cmm

BSc Cancer Biology and Immunology
 BSc Cancer Biology and Immunology with Study in Industry
 BSc Cellular and Molecular Medicine
 BSc Cellular and Molecular Medicine with Study in Industry
 BSc Medical Microbiology
 BSc Medical Microbiology with Study in Industry
 BSc Virology and Immunology
 BSc Virology and Immunology with Study in Industry
 MSci Cancer Biology and Immunology
 MSci Cellular and Molecular Medicine
 MSci Medical Microbiology
 MSci Virology and Immunology

UCAS code	Course length	Typical offers			
		A-level	A-level (ctx)	IB	IB (ctx)
B131	3 years	AAB	BBB	34	31
†	4 years	AAB	BBB	34	31
B130	3 years	AAB	BBB	34	31
†	4 years	AAB	BBB	34	31
C521	3 years	AAB	BBB	34	31
†	4 years	AAB	BBB	34	31
C540	3 years	AAB	BBB	34	31
†	4 years	AAB	BBB	34	31
B132	4 years	AAB	BBB	34	31
B133	4 years	AAB	BBB	34	31
C522	4 years	AAB	BBB	34	31
C541	4 years	AAB	BBB	34	31



CHEMICAL PHYSICS

bristol.ac.uk/ug22-chemphys

BSc Chemical Physics
 MSci Chemical Physics
 MSci Chemical Physics with Industrial Experience

UCAS code	Course length	Typical offers			
		A-level	A-level (ctx)	IB	IB (ctx)
F320	3 years	AAA	ABB	36	32
F322	4 years	A*AA	AAB	38	34
F323	4 years	A*AA	AAB	38	34



CHEMISTRY

bristol.ac.uk/ug22-chemistry

BSc Chemistry
 BSc Chemistry with a Preliminary Year of Study
 MSci Chemistry
 MSci Chemistry with Industrial Experience
 MSci Chemistry with Study Abroad
 MSci Chemistry with Study Abroad in a Modern Language

UCAS code	Course length	Typical offers			
		A-level	A-level (ctx)	IB	IB (ctx)
F100	3 years	AAA	ABB	36	32
F108	4 years	See bristol.ac.uk/ug22-chemistry			
F103	4 years	A*AA	AAB	38	34
F105	4 years	A*AA	AAB	38	34
F107	4 years	A*AA	AAB	38	34
F104	4 years	A*AA	AAB	38	34



CHEMISTRY WITH SCIENTIFIC COMPUTING

bristol.ac.uk/ug22-chem-sci-comp

BSc Chemistry with Scientific Computing
 MSci Chemistry with Scientific Computing

UCAS code	Course length	Typical offers			
		A-level	A-level (ctx)	IB	IB (ctx)
F130	3 years	AAA	ABB	36	32
F131	4 years	A*AA	AAB	38	34



CHILDHOOD STUDIES

bristol.ac.uk/ug22-childhood

BSc Childhood Studies
 BSc Childhood Studies with Study Abroad
 BSc Childhood Studies with Quantitative Research Methods
 MSci Childhood Studies with Innovation
 MSci Childhood Studies with Quantitative Research Methods

UCAS code	Course length	Typical offers			
		A-level	A-level (ctx)	IB	IB (ctx)
L520	3 years	ABB	BBC	32	29
L525	4 years	ABB	BBC	32	29
L522	3 years	ABB	BBC	32	29
L526	4 years	ABB	BBC	32	29
L523	4 years	ABB	BBC	32	29



CIVIL ENGINEERING

bristol.ac.uk/ug22-civilengineering

BEng Civil Engineering
MEng Civil Engineering
MEng Civil Engineering with a Year in Industry
MEng Civil Engineering with Study Abroad
MEng Civil Engineering with Study Abroad in a Modern Language

UCAS code	Course length	Typical offers			
		A-level	A-level (ctx)	IB	IB (ctx)
H205	3 years	A*AA	AAB	38	34
H200	4 years	A*AA	AAB	38	34
†	5 years	A*AA	AAB	38	34
†	4 years	A*AA	AAB	38	34
H201	4 years	A*AA	AAB	38	34



COMPARATIVE LITERATURES AND CULTURES

bristol.ac.uk/ug22-complit

BA Comparative Literatures and Cultures
BA Comparative Literatures and Cultures and French
BA Comparative Literatures and Cultures and German
BA Comparative Literatures and Cultures and Italian
BA Comparative Literatures and Cultures and Portuguese
BA Comparative Literatures and Cultures and Russian
BA Comparative Literatures and Cultures and Spanish

UCAS code	Course length	Typical offers			
		A-level	A-level (ctx)	IB	IB (ctx)
Q200	3 years	AAB	BBB	34	31
QR38	4 years	AAB	BBB	34	31
QR40	4 years	AAB	BBB	34	31
QR41	4 years	AAB	BBB	34	31
QR42	4 years	AAB	BBB	34	31
QR43	4 years	AAB	BBB	34	31
QR39	4 years	AAB	BBB	34	31



CLASSICAL STUDIES

bristol.ac.uk/ug22-classicalstudies

BA Classical Studies
BA English and Classical Studies

UCAS code	Course length	Typical offers			
		A-level	A-level (ctx)	IB	IB (ctx)
Q810	3 years	AAB	BBB	34	31
QQ38	3 years	AAA	ABB	36	32



COMPUTER SCIENCE

bristol.ac.uk/ug22-compsci

BEng Computer Science and Electronics
BSc Computer Science
BSc Mathematics and Computer Science
MEng Computer Science
MEng Computer Science and Electronics
MEng Computer Science and Electronics with Study Abroad
MEng Computer Science with Study Abroad
MEng Computer Science with Innovation
MEng Mathematics and Computer Science

UCAS code	Course length	Typical offers			
		A-level	A-level (ctx)	IB	IB (ctx)
GH45	3 years	AAA	ABB	36	32
G400	3 years	A*AA	AAB	38	34
GG14	3 years	A*A*A	AAA	40	36
G403	4 years	A*AA	AAB	38	34
GH46	4 years	AAA	ABB	36	32
GH4P	4 years	AAA	ABB	36	32
†	4 years	A*AA	AAB	38	34
G404	4 years	A*AA	AAB	38	34
GG1K	4 years	A*A*A	AAA	40	36



CLASSICS

bristol.ac.uk/ug22-classics

BA Classics

UCAS code	Course length	Typical offers			
		A-level	A-level (ctx)	IB	IB (ctx)
Q800	3 years	AAB	BBB	34	31



CRIMINOLOGY

bristol.ac.uk/ug22-criminology

BSc Criminology
BSc Criminology with
Quantitative Research Methods
BSc Criminology with Study Abroad
BSc Social Policy with Criminology
MSci Criminology with
Quantitative Research Methods

UCAS code	Course length	Typical offers			
		A-level	A-level (ctx)	IB	IB (ctx)
M900	3 years	AAB	BBB	34	31
M902	3 years	AAB	BBB	34	31
M901	4 years	AAB	BBB	34	31
LM49	3 years	AAB	BBB	34	31
M903	4 years	AAB	BBB	34	31



DENTAL HYGIENE AND THERAPY

bristol.ac.uk/ug22-dentalhygiene

BSc Dental Hygiene and Therapy

UCAS code	Course length	Typical offers			
		A-level	A-level (ctx)	IB	IB (ctx)
B750	3 years	ABB	BBC	32	29



DENTISTRY

bristol.ac.uk/ug22-dentistry

BDS Dentistry
BDS Gateway to Dentistry

UCAS code	Course length	Typical offers			
		A-level	A-level (ctx)	IB	IB (ctx)
A206	5 years	AAA	AAC	36	32 UCAT
A208	6 years	BBC		29	UCAT



ECONOMICS

bristol.ac.uk/ug22-economics

BSc Economics
BSc Economics and Accounting
BSc Economics and Accounting with Professional Placement
BSc Economics and Accounting with Study Abroad
BSc Economics and Econometrics
BSc Economics and Econometrics with Study Abroad
BSc Economics and Finance
BSc Economics and Finance with Study Abroad
BSc Economics and Management
BSc Economics and Management with Study Abroad
BSc Economics and Mathematics
BSc Economics and Politics
BSc Economics and Politics with Study Abroad
BSc Economics with Study Abroad
BSc Economics with Study Abroad in a Modern Language
BSc Philosophy and Economics
BSc Philosophy and Economics with Study Abroad
MSci Economics with Innovation

UCAS code	Course length	Typical offers			
		A-level	A-level (ctx)	IB	IB (ctx)
L100	3 years	A*AA	AAB	38	34
LN14	3 years	AAA	ABB	36	32
†	4 years	AAA	ABB	36	32
LN16	4 years	AAA	ABB	36	32
L140	3 years	A*AA	AAB	38	34
L142	4 years	A*AA	AAB	38	34
LN13	3 years	AAA	ABB	36	32
LN15	4 years	AAA	ABB	36	32
LN12	3 years	AAA	ABB	36	32
LN17	4 years	AAA	ABB	36	32
LG11	3 years	A*AA	AAB	38	34
LL12	3 years	AAA	ABB	36	32
LL14	4 years	AAA	ABB	36	32
L105	4 years	A*AA	AAB	38	34
L101	4 years	A*AA	AAB	38	34
VL51	3 years	AAA	ABB	36	32
VL54	4 years	AAA	ABB	36	32
L104	4 years	A*AA	AAB	38	34



EDUCATION

bristol.ac.uk/ug22-education

BSc Education Studies
BSc Education Studies with Study Abroad
BSc Psychology in Education
BSc Psychology in Education with Study Abroad

UCAS code	Course length	Typical offers			
		A-level	A-level (ctx)	IB	IB (ctx)
X300	3 years	ABB	BBC	32	29
X304	4 years	ABB	BBC	32	29
X301	3 years	ABB	BBC	32	29
X305	4 years	ABB	BBC	32	29



ELECTRICAL AND ELECTRONIC ENGINEERING

bristol.ac.uk/ug22-eleceng

BEng Computer Science and Electronics

BEng Electrical and Electronic Engineering

BEng Mechanical and Electrical Engineering

MEng Computer Science and Electronics

MEng Computer Science and Electronics with Study Abroad

MEng Electrical and Electronic Engineering

MEng Electrical and Electronic Engineering with a Year in Industry

MEng Electrical and Electronic Engineering with Innovation

MEng Electrical and Electronic Engineering with Study Abroad

MEng Electrical and Electronic Engineering with Study Abroad in a Modern Language

MEng Mechanical and Electrical Engineering

MEng Mechanical and Electrical Engineering with a Year in Industry

Typical offers

UCAS code	Course length	A-level	A-level (ctx)	IB	IB (ctx)
GH45	3 years	AAA	ABB	36	32
H600	3 years	AAA	ABB	36	32
H361	3 years	AAA	AAC	36	32
GH46	4 years	AAA	ABB	36	32
GH4P	4 years	AAA	ABB	36	32
H606	4 years	AAA	ABB	36	32
†	5 years	AAA	ABB	36	32
H604	4 years	AAA	ABB	36	32
†	4 years	AAA	ABB	36	32
H605	4 years	AAA	ABB	36	32
H360	4 years	AAA	AAC	36	32
†	5 years	AAA	AAC	36	32



ENGINEERING DESIGN

bristol.ac.uk/ug22-engdesign

MEng Engineering Design with Study in Industry

Typical offers

UCAS code	Course length	A-level	A-level (ctx)	IB	IB (ctx)
H150	5 years	A*AA	AAB	38	34



ENGINEERING MATHEMATICS

bristol.ac.uk/ug22-engmaths

BEng Engineering Mathematics

MEng Engineering Mathematics

MEng Engineering Mathematics with a Year in Industry

MEng Engineering Mathematics with Study Abroad

Typical offers

UCAS code	Course length	A-level	A-level (ctx)	IB	IB (ctx)
G162	3 years	AAA	ABB	36	32
G161	4 years	AAA	ABB	36	32
†	5 years	AAA	ABB	36	32
G160	4 years	AAA	ABB	36	32



ENGLISH

bristol.ac.uk/ug22-english

BA English

BA English and Classical Studies

BA English and French

BA English and German

BA English and History

BA English and Italian

BA English and Philosophy

BA English and Portuguese

BA English and Russian

BA English and Spanish

BA English Literature and Community Engagement

BA Film and English

BA Theatre and English

Typical offers

UCAS code	Course length	A-level	A-level (ctx)	IB	IB (ctx)
Q300	3 years	AAA	ABB	36	32
QQ38	3 years	AAA	ABB	36	32
QR31	4 years	AAA	ABB	36	32
QR32	4 years	AAA	ABB	36	32
QV31	3 years	AAA	AAC	36	32
QR33	4 years	AAA	ABB	36	32
QV35	3 years	AAA	ABB	36	32
QR35	4 years	AAA	ABB	36	32
QR37	4 years	AAA	ABB	36	32
QR34	4 years	AAA	ABB	36	32
††	6 years	See bristol.ac.uk/ug22-elce			
6T3X	3 years	AAA	ABB	36	32
4CC8	3 years	AAA	ABB	36	32



ENVIRONMENTAL GEOSCIENCE

bristol.ac.uk/ug22-envirogeoscience

BSc Environmental Geoscience

MSci Environmental Geoscience

MSci Environmental Geoscience with Study Abroad

Typical offers

UCAS code	Course length	A-level	A-level (ctx)	IB	IB (ctx)
F640	3 years	AAB	ABC	34	31
F641	4 years	AAB	ABC	34	31
F644	4 years	AAB	ABC	34	31



FILM

bristol.ac.uk/ug22-film

BA Film and English
 BA Film and French
 BA Film and German
 BA Film and Italian
 BA Film and Portuguese
 BA Film and Spanish
 BA Film and Television
 BA Theatre and Film
 MArts Film and Television
 with Innovation

UCAS code	Course length	Typical offers			
		A-level	A-level (ctx)	IB	IB (ctx)
6T3X	3 years	AAA	ABB	36	32
2LK6	4 years	AAB	BBB	34	31
4F29	4 years	AAB	BBB	34	31
4L92	4 years	AAB	BBB	34	31
4PP8	4 years	AAB	BBB	34	31
L288	4 years	AAB	BBB	34	31
4M5N	3 years	AAB	BBB	34	31
4KDU	3 years	AAB	BBB	34	31
4M50	4 years	AAB	BBB	34	31



FRENCH

bristol.ac.uk/ug22-french

BA Comparative Literatures
 and Cultures and French
 BA English and French
 BA Film and French
 BA French
 BA French and German
 BA French and Italian
 BA French and Portuguese
 BA French and Russian
 BA French and Spanish
 BA History and French
 BA History of Art and French
 BA International Business
 Management and French
 BA Modern Languages
 BA Music and French
 BA Philosophy and French
 BA Politics and French
 BA Theatre and French
 LLB Law and French

UCAS code	Course length	Typical offers			
		A-level	A-level (ctx)	IB	IB (ctx)
QR38	4 years	AAB	BBB	34	31
QR31	4 years	AAA	ABB	36	32
2LK6	4 years	AAB	BBB	34	31
R100	4 years	ABB	BBC	32	29
RR12	4 years	ABB	BBC	32	29
RR13	4 years	ABB	BBC	32	29
RR15	4 years	ABB	BBC	32	29
RR17	4 years	ABB	BBC	32	29
RR14	4 years	ABB	BBC	32	29
VR11	4 years	AAA	ABB	36	32
VR31	4 years	AAB	BBB	34	31
NR11	4 years	AAA	ABB	36	32
RR01	4 years	AAB	BBB	34	31
WR31	4 years	AAB	BBB	34	31
RV15	4 years	AAB	BBB	34	31
RL12	4 years	AAB	BBB	34	31
W43F	4 years	AAB	BBB	34	31
MR11	4 years	A*AA	AAB	38	34 LNAT



GEOGRAPHY

bristol.ac.uk/ug22-geography

BSc Geography
 BSc Geography with Quantitative
 Research Methods
 BSc Geography with Study Abroad
 BSc Geography with Study
 Abroad in a Modern Language
 MSci Geography with Innovation
 MSci Geography with
 Quantitative Research Methods

UCAS code	Course length	Typical offers			
		A-level	A-level (ctx)	IB	IB (ctx)
F800	3 years	AAA	ABB	36	32
F802	3 years	AAA	ABB	36	32
09F4	4 years	AAA	ABB	36	32
F801	4 years	AAA	ABB	36	32
F805	4 years	AAA	ABB	36	32
F804	4 years	AAA	ABB	36	32



GEOLOGY

bristol.ac.uk/ug22-geology

BSc Geology
 MSci Geology
 MSci Geology with Study Abroad

UCAS code	Course length	Typical offers			
		A-level	A-level (ctx)	IB	IB (ctx)
F600	3 years	AAB	ABC	34	31
F603	4 years	AAB	ABC	34	31
F609	4 years	AAB	ABC	34	31



GEOPHYSICS

bristol.ac.uk/ug22-geophysics

BSc Geophysics
 MSci Geophysics
 MSci Geophysics with Study Abroad

UCAS code	Course length	Typical offers			
		A-level	A-level (ctx)	IB	IB (ctx)
F661	3 years	AAB	ABC	34	31
F662	4 years	AAB	ABC	34	31
F663	4 years	AAB	ABC	34	31

Our modern languages courses are being reviewed and updated for 2022 entry.
 Please visit our online course finder for the latest information: bristol.ac.uk/ug-study



GERMAN

bristol.ac.uk/ug22-german

BA Comparative Literatures and Cultures and German
 BA English and German
 BA Film and German
 BA French and German
 BA German
 BA German and Italian
 BA German and Portuguese
 BA German and Russian
 BA German and Spanish
 BA History and German
 BA History of Art and German
 BA International Business Management and German
 BA Modern Languages
 BA Music and German
 BA Philosophy and German
 BA Politics and German
 BA Theatre and German
 LLB Law and German

UCAS code	Course length	Typical offers			
		A-level	A-level (ctx)	IB	IB (ctx)
QR40	4 years	AAB	BBB	34	31
QR32	4 years	AAA	ABB	36	32
4F29	4 years	AAB	BBB	34	31
RR12	4 years	ABB	BBC	32	29
R200	4 years	ABB	BBC	32	29
RR23	4 years	ABB	BBC	32	29
RR25	4 years	ABB	BBC	32	29
RR27	4 years	ABB	BBC	32	29
RR24	4 years	ABB	BBC	32	29
VR12	4 years	AAA	ABB	36	32
VR32	4 years	AAB	BBB	34	31
NR12	4 years	AAA	ABB	36	32
RR01	4 years	AAB	BBB	34	31
WR32	4 years	AAB	BBB	34	31
RV25	4 years	AAB	BBB	34	31
RL22	4 years	AAB	BBB	34	31
21C7	4 years	AAB	BBB	34	31
MR12	4 years	A*AA	AAB	38	34 LNAT



HISTORY

bristol.ac.uk/ug22-history

BA English and History
 BA History
 BA History and French
 BA History and German
 BA History and Italian
 BA History and Portuguese
 BA History and Russian
 BA History and Spanish
 MArts History with Innovation

UCAS code	Course length	Typical offers			
		A-level	A-level (ctx)	IB	IB (ctx)
QV31	3 years	AAA	AAC	36	32
V100	3 years	AAA	ABB	36	32
VR11	4 years	AAA	ABB	36	32
VR12	4 years	AAA	ABB	36	32
VR13	4 years	AAA	ABB	36	32
VR15	4 years	AAA	ABB	36	32
VR17	4 years	AAA	ABB	36	32
VR14	4 years	AAA	ABB	36	32
V104	4 years	AAA	ABB	36	32



HISTORY OF ART

bristol.ac.uk/ug22-arthistory

BA History of Art
 BA History of Art and French
 BA History of Art and German
 BA History of Art and Italian
 BA History of Art and Portuguese
 BA History of Art and Russian
 BA History of Art and Spanish

UCAS code	Course length	Typical offers			
		A-level	A-level (ctx)	IB	IB (ctx)
V350	3 years	AAB	BBB	34	31
VR31	4 years	AAB	BBB	34	31
VR32	4 years	AAB	BBB	34	31
VR33	4 years	AAB	BBB	34	31
VR35	4 years	AAB	BBB	34	31
VR37	4 years	AAB	BBB	34	31
VR34	4 years	AAB	BBB	34	31



HISPANIC STUDIES (CATALAN, PORTUGUESE AND SPANISH)

bristol.ac.uk/ug22-spanish

BA Hispanic Studies
 BA Modern Languages

UCAS code	Course length	Typical offers			
		A-level	A-level (ctx)	IB	IB (ctx)
RR45	4 years	ABB	BBC	32	29
RR01	4 years	AAB	BBB	34	31

Our modern languages courses are being reviewed and updated for 2022 entry. Please visit our online course finder for the latest information: bristol.ac.uk/ug-study



INNOVATION

bristol.ac.uk/ug22-innovation

MArts Anthropology with Innovation
 MArts Film and Television with Innovation
 MArts History with Innovation
 MArts Music with Innovation
 MArts Theatre with Innovation
 MEng Computer Science with Innovation
 MEng Electrical and Electronic Engineering with Innovation
 MSci Childhood Studies with Innovation
 MSci Economics with Innovation
 MSci Geography with Innovation
 MSci Management with Innovation
 MSci Physics with Innovation
 MSci Psychology with Innovation
 MSci Social Policy with Innovation

UCAS code	Course length	Typical offers				IB	IB (ctx)
		A-level	A-level (ctx)	IB	IB (ctx)		
XD50	4 years	AAB	BBB	34	31		
4M50	4 years	AAB	BBB	34	31		
V104	4 years	AAA	ABB	36	32		
W304	4 years	AAB	BBB	34	31		
2Q50	4 years	AAB	BBB	34	31		
G404	4 years	A*AA	AAB	38	34		
H604	4 years	AAA	ABB	36	32		
L526	4 years	ABB	BBC	32	29		
L104	4 years	A*AA	AAB	38	34		
F805	4 years	AAA	ABB	36	32		
N204	4 years	AAA	ABB	36	32		
F306	4 years	A*AA	AAB	38	34		
C804	4 years	A*AA	AAB	38	34		
L405	4 years	ABB	BBC	32	29		



INTERNATIONAL BUSINESS MANAGEMENT

bristol.ac.uk/ug22-ibm

BA International Business Management and French
 BA International Business Management and German
 BA International Business Management and Spanish
 BSc International Business Management
 BSc International Business Management with Study Abroad
 BSc International Business Management with Study Abroad in a Modern Language

UCAS code	Course length	Typical offers				IB	IB (ctx)
		A-level	A-level (ctx)	IB	IB (ctx)		
NR11	4 years	AAA	ABB	36	32		
NR12	4 years	AAA	ABB	36	32		
NR14	4 years	AAA	ABB	36	32		
N120	3 years	AAA	ABB	36	32		
N121	4 years	AAA	ABB	36	32		
N122	4 years	AAA	ABB	36	32		



INTERNATIONAL FOUNDATION PROGRAMME (FOR INTERNATIONAL STUDENTS)

bristol.ac.uk/ug22-internationalfoundation

International Foundation Programme (Arts and Humanities)
 International Foundation Programme (Medicine and Dentistry)
 International Foundation Programme (Science, Technology, Engineering and Mathematics)
 International Foundation Programme (Social Sciences and Law)

UCAS code	Course length	Typical offers				IB	IB (ctx)
		A-level	A-level (ctx)	IB	IB (ctx)		
††	1 year	See bristol.ac.uk/ug22-internationalfoundation					
††	1 year	See bristol.ac.uk/ug22-internationalfoundation					
††	1 year	See bristol.ac.uk/ug22-internationalfoundation					
††	1 year	See bristol.ac.uk/ug22-internationalfoundation					



ITALIAN

bristol.ac.uk/ug22-italian

BA Comparative Literatures and Cultures and Italian
 BA English and Italian
 BA Film and Italian
 BA French and Italian
 BA German and Italian
 BA History and Italian
 BA History of Art and Italian
 BA Italian
 BA Italian and Portuguese
 BA Italian and Russian
 BA Italian and Spanish
 BA Modern Languages
 BA Music and Italian
 BA Philosophy and Italian
 BA Politics and Italian
 BA Theatre and Italian

UCAS code	Course length	Typical offers				IB	IB (ctx)
		A-level	A-level (ctx)	IB	IB (ctx)		
QR41	4 years	AAB	BBB	34	31		
QR33	4 years	AAA	ABB	36	32		
4L92	4 years	AAB	BBB	34	31		
RR13	4 years	ABB	BBC	32	29		
RR23	4 years	ABB	BBC	32	29		
VR13	4 years	AAA	ABB	36	32		
VR33	4 years	AAB	BBB	34	31		
R310	4 years	ABB	BBC	32	29		
RR35	4 years	ABB	BBC	32	29		
RR37	4 years	ABB	BBC	32	29		
RR34	4 years	ABB	BBC	32	29		
RR01	4 years	AAB	BBB	34	31		
WR33	4 years	AAB	BBB	34	31		
RV35	4 years	AAB	BBB	34	31		
RL32	4 years	AAB	BBB	34	31		
22FF	4 years	AAB	BBB	34	31		

Our modern languages courses are being reviewed and updated for 2022 entry. Please visit our online course finder for the latest information: bristol.ac.uk/ug-study



LAW

bristol.ac.uk/ug22-law

LLB Law
LLB Law and French
LLB Law and German
LLB Law and Spanish
LLB Law with Study Abroad
LLB Law with Study in Continental Europe

UCAS code	Course length	Typical offers			
		A-level	A-level (ctx)	IB	IB (ctx)
M100	3 years	A*AA	AAB	38	34 LNAT
MR11	4 years	A*AA	AAB	38	34 LNAT
MR12	4 years	A*AA	AAB	38	34 LNAT
MR13	4 years	A*AA	AAB	38	34 LNAT
†	4 years	A*AA	AAB	38	34 LNAT
†	4 years	A*AA	AAB	38	34 LNAT



MATHEMATICS

bristol.ac.uk/ug22-maths

BSc Data Science
BSc Data Science with a Year in Industry
BSc Economics and Mathematics
BSc Mathematics
BSc Mathematics and Computer Science
BSc Mathematics and Philosophy
BSc Mathematics and Physics
BSc Mathematics with Statistics
BSc Mathematics with Statistics for Finance
BSc Mathematics with Study Abroad in a Modern Language
MEng Mathematics and Computer Science
MSci Mathematics
MSci Mathematics and Philosophy
MSci Mathematics and Physics
MSci Mathematics with Statistics
MSci Mathematics with Study Abroad
MSci Mathematics with Study Abroad in a Modern Language

UCAS code	Course length	Typical offers			
		A-level	A-level (ctx)	IB	IB (ctx)
G1G5	3 years	A*AA	AAB	38	34
G1G6	4 years	A*AA	AAB	38	34
LG11	3 years	A*AA	AAB	38	34
G100	3 years	A*A*A	AAA	40	36
GG14	3 years	A*A*A	AAA	40	36
VG51	3 years	A*AA	AAB	38	34
GFD3	3 years	A*AA	AAB	38	34
G1G3	3 years	A*A*A	AAA	40	36
G1G4	3 years	A*A*A	AAA	40	36
G101	4 years	A*A*A	AAA	40	36
GG1K	4 years	A*A*A	AAA	40	36
G103	4 years	A*A*A	AAA	40	36
GV15	4 years	A*AA	AAB	38	34
GFC3	4 years	A*AA	AAB	38	34
G1GH	4 years	A*A*A	AAA	40	36
G105	4 years	A*A*A	AAA	40	36
G104	4 years	A*A*A	AAA	40	36

See also Engineering Mathematics



LIBERAL ARTS

bristol.ac.uk/ug22-liberalarts

BA Liberal Arts
MLibArts Liberal Arts with Study Abroad

UCAS code	Course length	Typical offers			
		A-level	A-level (ctx)	IB	IB (ctx)
2ZB7	3 years	AAA	ABB	36	32
2T23	4 years	AAA	ABB	36	32



MARKETING

bristol.ac.uk/ug22-marketing

BSc Marketing
BSc Marketing with Study Abroad
BSc Marketing with Study Abroad in a Modern Language

UCAS code	Course length	Typical offers			
		A-level	A-level (ctx)	IB	IB (ctx)
N500	3 years	AAA	ABB	36	32
N504	4 years	AAA	ABB	36	32
N501	4 years	AAA	ABB	36	32



MECHANICAL ENGINEERING

bristol.ac.uk/ug22-mecheng

BEng Mechanical Engineering
BEng Mechanical and Electrical Engineering
MEng Mechanical Engineering
MEng Mechanical Engineering with a Year in Industry
MEng Mechanical Engineering with Study Abroad
MEng Mechanical Engineering with Study Abroad in a Modern Language
MEng Mechanical and Electrical Engineering
MEng Mechanical and Electrical Engineering with a Year in Industry

UCAS code	Course length	Typical offers			
		A-level	A-level (ctx)	IB	IB (ctx)
H305	3 years	A*AA	AAB	38	34
H361	3 years	AAA	AAC	36	32
H300	4 years	A*AA	AAB	38	34
†	5 years	A*AA	AAB	38	34
†	4 years	A*AA	AAB	38	34
H301	4 years	A*AA	AAB	38	34
H360	4 years	AAA	AAC	36	32
†	5 years	AAA	AAC	36	32



MEDICINE

bristol.ac.uk/ug22-medicine

International Foundation Programme
for Medicine and Dentistry
MB ChB Gateway to Medicine
MB ChB Medicine

UCAS code	Course length	Typical offers			
		A-level	A-level (ctx)	IB	IB (ctx)
†	1 year	See bristol.ac.uk/ug22-internationalfoundation			
A108	6 years	BBC		29	UCAT
A100	5 years	AAA	AAC	36	32 UCAT



NEUROSCIENCE

bristol.ac.uk/ug22-neuroscience

BSc Neuroscience
MSci Neuroscience
MSci Neuroscience with
Study in Industry
MSci Psychology
and Neuroscience

UCAS code	Course length	Typical offers			
		A-level	A-level (ctx)	IB	IB (ctx)
B140	3 years	AAA	ABB	36	32
B141	4 years	AAA	ABB	36	32
†	4 years	AAA	ABB	36	32
CB81	4 years	A*AA	AAB	38	34



MODERN LANGUAGES

bristol.ac.uk/ug22-modlang

BA Modern Languages

See also: French, German,
Hispanic Studies, Italian,
Portuguese, Russian, Spanish

UCAS code	Course length	Typical offers			
		A-level	A-level (ctx)	IB	IB (ctx)
RR01	4 years	AAB	BBB	34	31



PALAEONTOLOGY AND EVOLUTION

bristol.ac.uk/ug22-palaeontology

BSc Palaeontology and Evolution
MSci Palaeontology and Evolution

UCAS code	Course length	Typical offers			
		A-level	A-level (ctx)	IB	IB (ctx)
CF17	3 years	AAB	ABC	34	31
CF16	4 years	AAB	ABC	34	31



MUSIC

bristol.ac.uk/ug22-music

BA Music
BA Music and French
BA Music and German
BA Music and Italian
BA Music and Portuguese
BA Music and Russian
BA Music and Spanish
MArts Music with Innovation

UCAS code	Course length	Typical offers			
		A-level	A-level (ctx)	IB	IB (ctx)
W300	3 years	AAB	BBB	34	31
WR31	4 years	AAB	BBB	34	31
WR32	4 years	AAB	BBB	34	31
WR33	4 years	AAB	BBB	34	31
WR35	4 years	AAB	BBB	34	31
WR37	4 years	AAB	BBB	34	31
WR34	4 years	AAB	BBB	34	31
W304	4 years	AAB	BBB	34	31



PHARMACOLOGY

bristol.ac.uk/ug22-pharmacology

BSc Pharmacology
MSci Pharmacology
MSci Pharmacology with
Study in Industry

UCAS code	Course length	Typical offers			
		A-level	A-level (ctx)	IB	IB (ctx)
B210	3 years	AAB	BBB	34	31
B212	4 years	AAB	BBB	34	31
B211	4 years	AAB	BBB	34	31

Our modern languages courses are being reviewed and updated for 2022 entry.
Please visit our online course finder for the latest information: bristol.ac.uk/ug-study



PHILOSOPHY

bristol.ac.uk/ug22-philosophy

BA English and Philosophy
 BA Philosophy
 BA Philosophy and French
 BA Philosophy and German
 BA Philosophy and Italian
 BA Philosophy and Portuguese
 BA Philosophy and Russian
 BA Philosophy and Spanish
 BA Philosophy and Theology
 BSc Mathematics and Philosophy
 BSc Philosophy and Economics
 BSc Philosophy and Economics with Study Abroad
 BSc Philosophy and Politics
 BSc Physics and Philosophy
 BSc Sociology and Philosophy
 MSci Mathematics and Philosophy
 MSci Physics and Philosophy

UCAS code	Course length	Typical offers			
		A-level	A-level (ctx)	IB	IB (ctx)
QV35	3 years	AAA	ABB	36	32
V500	3 years	AAA	ABB	36	32
RV15	4 years	AAB	BBB	34	31
RV25	4 years	AAB	BBB	34	31
RV35	4 years	AAB	BBB	34	31
RV55	4 years	AAB	BBB	34	31
RV75	4 years	AAB	BBB	34	31
RV45	4 years	AAB	BBB	34	31
VV56	3 years	AAA	ABB	36	32
VG51	3 years	A*AA	AAB	38	34
VL51	3 years	AAA	ABB	36	32
VL54	4 years	AAA	ABB	36	32
VL52	3 years	AAA	ABB	36	32
FV35	3 years	A*AA	AAB	38	34
LV35	3 years	AAB	BBB	34	31
GV15	4 years	A*AA	AAB	38	34
FVH5	4 years	A*AA	AAB	38	34



PHYSICS WITH SCIENTIFIC COMPUTING

bristol.ac.uk/ug22-physicscomp

BSc Physics with Scientific Computing
 MSci Physics with Scientific Computing
 MSci Physics with Scientific Computing with Industrial Experience

UCAS code	Course length	Typical offers			
		A-level	A-level (ctx)	IB	IB (ctx)
F330	3 years	A*AA	AAB	38	34
F331	4 years	A*AA	AAB	38	34
F334	4 years	A*AA	AAB	38	34



PHYSIOLOGICAL SCIENCE

bristol.ac.uk/ug22-physiology

BSc Physiological Science
 MSci Physiological Science
 MSci Physiological Science with Study in Industry

UCAS code	Course length	Typical offers			
		A-level	A-level (ctx)	IB	IB (ctx)
B120	3 years	AAB	BBB	34	31
B122	4 years	AAB	BBB	34	31
†	4 years	AAB	BBB	34	31



PHYSICS

bristol.ac.uk/ug22-physics

BSc Mathematics and Physics
 BSc Physics
 BSc Physics and Philosophy
 BSc Physics with a Preliminary Year of Study
 BSc Physics with Astrophysics
 MSci Mathematics and Physics
 MSci Physics
 MSci Physics and Philosophy
 MSci Physics with Astrophysics
 MSci Physics with Industrial Experience
 MSci Physics with Innovation
 MSci Physics with International Experience
 MSci Physics with Study Abroad in a Modern Language
 MSci Theoretical Physics

UCAS code	Course length	Typical offers			
		A-level	A-level (ctx)	IB	IB (ctx)
GFD3	3 years	A*AA	AAB	38	34
F300	3 years	A*AA	AAB	38	34
FV35	3 years	A*AA	AAB	38	34
F308	4 years	See bristol.ac.uk/ug22-physics			
F3F5	3 years	A*AA	AAB	38	34
GFC3	4 years	A*AA	AAB	38	34
F303	4 years	A*AA	AAB	38	34
FVH5	4 years	A*AA	AAB	38	34
F3FM	4 years	A*AA	AAB	38	34
F305	4 years	A*AA	AAB	38	34
F306	4 years	A*AA	AAB	38	34
F307	4 years	A*AA	AAB	38	34
F304	4 years	A*AA	AAB	38	34
F340	4 years	A*AA	AAB	38	34



POLITICS AND INTERNATIONAL RELATIONS

bristol.ac.uk/ug22-politics

BA Politics and French
 BA Politics and German
 BA Politics and Italian
 BA Politics and Portuguese
 BA Politics and Russian
 BA Politics and Spanish
 BSc Economics and Politics
 BSc Economics and Politics with Study Abroad
 BSc Philosophy and Politics
 BSc Politics and International Relations
 BSc Politics and International Relations with Study Abroad
 BSc Politics and Sociology
 BSc Politics with Quantitative Research Methods
 BSc Politics with Quantitative Research Methods with Study Abroad
 BSc Social Policy and Politics
 MSci Politics with Quantitative Research Methods

UCAS code	Course length	Typical offers			
		A-level	A-level (ctx)	IB	IB (ctx)
RL12	4 years	AAB	BBB	34	31
RL22	4 years	AAB	BBB	34	31
RL32	4 years	AAB	BBB	34	31
RL52	4 years	AAB	BBB	34	31
RL72	4 years	AAB	BBB	34	31
RL42	4 years	AAB	BBB	34	31
LL12	3 years	AAA	ABB	36	32
LL14	4 years	AAA	ABB	36	32
VL52	3 years	AAA	ABB	36	32
L200	3 years	AAA	ABB	36	32
L201	4 years	AAA	ABB	36	32
LL23	3 years	AAB	BBB	34	31
L202	3 years	AAA	ABB	36	32
L204	4 years	AAA	ABB	36	32
LL42	3 years	AAB	BBB	34	31
L203	4 years	AAA	ABB	36	32



PORTUGUESE

bristol.ac.uk/ug22-portuguese

BA Comparative Literatures and Cultures and Portuguese
 BA English and Portuguese
 BA Film and Portuguese
 BA French and Portuguese
 BA German and Portuguese
 BA Hispanic Studies
 BA History and Portuguese
 BA History of Art and Portuguese
 BA Italian and Portuguese
 BA Modern Languages
 BA Music and Portuguese
 BA Philosophy and Portuguese
 BA Politics and Portuguese
 BA Russian and Portuguese
 BA Spanish and Portuguese
 BA Theatre and Portuguese

UCAS code	Course length	Typical offers			
		A-level	A-level (ctx)	IB	IB (ctx)
QR42	4 years	AAB	BBB	34	31
QR35	4 years	AAA	ABB	36	32
4PP8	4 years	AAB	BBB	34	31
RR15	4 years	ABB	BBC	32	29
RR25	4 years	ABB	BBC	32	29
RR45	4 years	ABB	BBC	32	29
VR15	4 years	AAA	ABB	36	32
VR35	4 years	AAB	BBB	34	31
RR35	4 years	ABB	BBC	32	29
RR01	4 years	AAB	BBB	34	31
WR35	4 years	AAB	BBB	34	31
RV55	4 years	AAB	BBB	34	31
RL52	4 years	AAB	BBB	34	31
RR57	4 years	ABB	BBC	32	29
RR54	4 years	ABB	BBC	32	29
R2D8	4 years	AAB	BBB	34	31



PSYCHOLOGY

bristol.ac.uk/ug22-psychology

BSc Psychology
 MSci Psychology with Innovation
 MSci Psychology and Neuroscience

UCAS code	Course length	Typical offers			
		A-level	A-level (ctx)	IB	IB (ctx)
C801	3 years	A*AA	AAB	38	34
C804	4 years	A*AA	AAB	38	34
CB81	4 years	A*AA	AAB	38	34

Our modern languages courses are being reviewed and updated for 2022 entry. Please visit our online course finder for the latest information: bristol.ac.uk/ug-study



QUANTITATIVE RESEARCH METHODS

bristol.ac.uk/ug22-quantresearch

BSc Childhood Studies with Quantitative Research Methods

BSc Criminology with Quantitative Research Methods

BSc Geography with Quantitative Research Methods

BSc Politics with Quantitative Research Methods

BSc Politics with Quantitative Research Methods with Study Abroad

BSc Social Policy with Quantitative Research Methods

BSc Sociology with Quantitative Research Methods

BSc Sociology with Quantitative Research Methods with Study Abroad

MSci Childhood Studies with Quantitative Research Methods

MSci Criminology with Quantitative Research Methods

MSci Geography with Quantitative Research Methods

MSci Politics with Quantitative Research Methods

MSci Social Policy with Quantitative Research Methods

MSci Sociology with Quantitative Research Methods

Typical offers

UCAS code	Course length	A-level	A-level (ctx)	IB	IB (ctx)
L522	3 years	ABB	BBC	32	29
M902	3 years	AAB	BBB	34	31
F802	3 years	AAA	ABB	36	32
L202	3 years	AAA	ABB	36	32
L204	4 years	AAA	ABB	36	32
L402	3 years	AAB	BBB	34	31
L302	3 years	AAB	BBB	34	31
L304	4 years	AAB	BBB	34	31
L523	4 years	ABB	BBC	32	29
M903	4 years	AAB	BBB	34	31
F804	4 years	AAA	ABB	36	32
L203	4 years	AAA	ABB	36	32
L403	4 years	AAB	BBB	34	31
L303	4 years	AAB	BBB	34	31



RELIGION AND THEOLOGY

bristol.ac.uk/ug22-religion

BA Philosophy and Theology

BA Religion and Theology

BA Theology and Sociology

MArts Religion and Theology with Study Abroad

Typical offers

UCAS code	Course length	A-level	A-level (ctx)	IB	IB (ctx)
VV56	3 years	AAA	ABB	36	32
V600	3 years	AAB	BBB	34	31
VL63	3 years	AAB	BBB	34	31
V601	4 years	AAB	BBB	34	31



RUSSIAN

bristol.ac.uk/ug22-russian

BA Comparative Literatures and Cultures and Russian

BA English and Russian

BA French and Russian

BA German and Russian

BA History and Russian

BA History of Art and Russian

BA Italian and Russian

BA Modern Languages

BA Music and Russian

BA Philosophy and Russian

BA Politics and Russian

BA Russian

BA Russian and Portuguese

BA Spanish and Russian

Typical offers

UCAS code	Course length	A-level	A-level (ctx)	IB	IB (ctx)
QR43	4 years	AAB	BBB	34	31
QR37	4 years	AAA	ABB	36	32
RR17	4 years	ABB	BBC	32	29
RR27	4 years	ABB	BBC	32	29
VR17	4 years	AAA	ABB	36	32
VR37	4 years	AAB	BBB	34	31
RR37	4 years	ABB	BBC	32	29
RR01	4 years	AAB	BBB	34	31
WR37	4 years	AAB	BBB	34	31
RV75	4 years	AAB	BBB	34	31
RL72	4 years	AAB	BBB	34	31
R700	4 years	ABB	BBC	32	29
RR57	4 years	ABB	BBC	32	29
RR47	4 years	ABB	BBC	32	29



SOCIAL POLICY

bristol.ac.uk/ug22-socpol

BSc International Social and Public Policy

BSc International Social and Public Policy with Study Abroad

BSc Social Policy

BSc Social Policy and Politics

BSc Social Policy and Sociology

BSc Social Policy with Criminology

BSc Social Policy with Quantitative Research Methods

BSc Social Policy with Study Abroad

MSci Social Policy with Innovation

MSci Social Policy with Quantitative Research Methods

Typical offers

UCAS code	Course length	A-level	A-level (ctx)	IB	IB (ctx)
L410	3 years	AAB	BBB	34	31
L411	4 years	AAB	BBB	34	31
L400	3 years	AAB	BBB	34	31
LL42	3 years	AAB	BBB	34	31
LL43	3 years	AAB	BBB	34	31
LM49	3 years	AAB	BBB	34	31
L402	3 years	AAB	BBB	34	31
L404	4 years	AAB	BBB	34	31
L405	4 years	ABB	BBC	32	29
L403	4 years	AAB	BBB	34	31

Our modern languages courses are being reviewed and updated for 2022 entry. Please visit our online course finder for the latest information: bristol.ac.uk/ug-study



SOCIOLOGY

bristol.ac.uk/ug22-sociology

BA Theology and Sociology
 BSc Politics and Sociology
 BSc Social Policy and Sociology
 BSc Sociology
 BSc Sociology and Philosophy
 BSc Sociology with Quantitative Research Methods
 BSc Sociology with Quantitative Research Methods with Study Abroad
 BSc Sociology with Study Abroad
 MSci Sociology with Quantitative Research Methods

UCAS code	Course length	Typical offers			
		A-level	A-level (ctx)	IB	IB (ctx)
VL63	3 years	AAB	BBB	34	31
LL23	3 years	AAB	BBB	34	31
LL43	3 years	AAB	BBB	34	31
L300	3 years	AAB	BBB	34	31
LV35	3 years	AAB	BBB	34	31
L302	3 years	AAB	BBB	34	31
L304	4 years	AAB	BBB	34	31
L301	4 years	AAB	BBB	34	31
L303	4 years	AAB	BBB	34	31



SPANISH

bristol.ac.uk/ug22-spanish

BA Comparative Literatures and Cultures and Spanish
 BA English and Spanish
 BA Film and Spanish
 BA French and Spanish
 BA German and Spanish
 BA Hispanic Studies
 BA History and Spanish
 BA History of Art and Spanish
 BA International Business Management and Spanish
 BA Italian and Spanish
 BA Modern Languages
 BA Music and Spanish
 BA Philosophy and Spanish
 BA Politics and Spanish
 BA Spanish
 BA Spanish and Portuguese
 BA Spanish and Russian
 BA Theatre and Spanish
 LLB Law and Spanish

UCAS code	Course length	Typical offers			
		A-level	A-level (ctx)	IB	IB (ctx)
QR39	4 years	AAB	BBB	34	31
QR34	4 years	AAA	ABB	36	32
L288	4 years	AAB	BBB	34	31
RR14	4 years	ABB	BBC	32	29
RR24	4 years	ABB	BBC	32	29
RR45	4 years	ABB	BBC	32	29
VR14	4 years	AAA	ABB	36	32
VR34	4 years	AAB	BBB	34	31
NR14	4 years	AAA	ABB	36	32
RR34	4 years	ABB	BBC	32	29
RR01	4 years	AAB	BBB	34	31
WR34	4 years	AAB	BBB	34	31
RV45	4 years	AAB	BBB	34	31
RL42	4 years	AAB	BBB	34	31
R400	4 years	ABB	BBC	32	29
RR54	4 years	ABB	BBC	32	29
RR47	4 years	ABB	BBC	32	29
4D8C	4 years	AAB	BBB	34	31
MR13	4 years	A*AA	AAB	38	34 LNAT

Our modern languages courses are being reviewed and updated for 2022 entry. Please visit our online course finder for the latest information: bristol.ac.uk/ug-study



THEATRE

bristol.ac.uk/ug22-theatre

BA Theatre and English
 BA Theatre and Film
 BA Theatre and French
 BA Theatre and German
 BA Theatre and Italian
 BA Theatre and Performance Studies
 BA Theatre and Portuguese
 BA Theatre and Spanish
 MArts Theatre with Innovation

UCAS code	Course length	Typical offers			
		A-level	A-level (ctx)	IB	IB (ctx)
4CC8	3 years	AAA	ABB	36	32
4KDU	3 years	AAB	BBB	34	31
W43F	4 years	AAB	BBB	34	31
21C7	4 years	AAB	BBB	34	31
22FF	4 years	AAB	BBB	34	31
2Q3W	3 years	AAB	BBB	34	31
R2D8	4 years	AAB	BBB	34	31
4D8C	4 years	AAB	BBB	34	31
2Q50	4 years	AAB	BBB	34	31



VETERINARY NURSING

bristol.ac.uk/ug22-vetnursing

BSc Veterinary Nursing and Companion Animal Behaviour

UCAS code	Course length	Typical offers			
		A-level	A-level (ctx)	IB	IB (ctx)
D313	4 years	BBC		29	



VETERINARY SCIENCE

bristol.ac.uk/ug22-vetscience

BVSc Gateway to Veterinary Science
 BVSc Veterinary Science
 BVSc Veterinary Science: Accelerated Graduate Entry

UCAS code	Course length	Typical offers			
		A-level	A-level (ctx)	IB	IB (ctx)
D108	6 years	BBC		29	
D100	5 years	AAA	AAC	36	32
D102	4 years	See bristol.ac.uk/ug22-vetscience			

This guide contains information for students planning to start university in autumn 2022. We have made every effort to ensure all details are correct at the time of going to press (February 2021). However, since this information is subject to change, check the University's website for the latest updates: bristol.ac.uk/ug-study

ctx Contextual offer, see page 46 or bristol.ac.uk/contextual-offers
 † Entry by transfer
 †† Direct entry

Applying to Bristol

The application process is a key stage on your journey to becoming a University of Bristol student. Here's our guide to help you along the way.

March 2021

Research

Search for courses in our online course finder and explore Bristol at an open event:

bristol.ac.uk/ug-visit

September 2021

Apply

UCAS opens application for 2022 entry in early September.

15 October 2021

UCAS deadline

Application deadline for dentistry, medicine and veterinary science.

15 January 2022

UCAS deadline

Application deadline for all other degree courses.

**October 2021 –
May 2022**

Offers

We will assess your application and aim to make a decision within five weeks. You will be notified via UCAS Track.

**January 2022 –
April 2022**

Decide

If we make you an offer, we'll invite you to an event specifically for your course, where you can find out more before making your decision.

**June 2022 –
August 2022**

Results

If your offer is conditional, we will confirm your place via UCAS Track if you meet the terms of your offer.

**July 2022 –
August 2022**

Clearing

From early July, if you are not holding any offers, you can apply to courses that still have vacancies via UCAS Clearing.

Due to COVID-19, events may take place online and deadlines may be subject to change. Please visit our website for the latest information: bristol.ac.uk/ug-study

BRISL B78

*University of Bristol UCAS
institution code*

How to apply

The University accepts applications through UCAS and you can submit your application from early September 2021. You can apply to up to five universities but we will not know to which other universities or for which other courses you have applied. For detailed information about the UCAS application process visit: www.ucas.com/undergraduate

Deadline dates

The closing date for all applications to medicine, dentistry and veterinary science is 15 October. No more than four out of your five choices can be used for these courses. You can apply for a fifth course in a different subject without prejudicing your commitment to medicine, dentistry or veterinary science.

The main UCAS application deadline for other courses is 15 January and applications received by this date will be given equal consideration. Some of our courses may continue to accept applications after that date until the final deadline of 30 June.

Other ways to apply

UCAS offers alternative application schemes if you want to apply after the main scheme deadlines have passed. UCAS Extra opens in February and UCAS Clearing opens in July.

Part-time and direct entry courses

For our part-time degrees, including International Foundation Programmes and Foundation in Arts and Social Sciences (CertHE), you must apply directly to the University. For further information, please visit the online course finder at bristol.ac.uk/ug-study

Intercalated degrees

We welcome students from other universities who are looking to intercalate at Bristol. For more information and a list of available courses visit: bristol.ac.uk/intercalate

Your application and offer

We accept a wide range of applicants with diverse qualifications and welcome applications from students of all backgrounds, ages and nationalities.

Assessing your application

We will assess your application in line with our admissions policies and procedures and the admissions statement for the course. This will usually include assessing your A-level (or equivalent) predicted or achieved grades and GCSE (or equivalent) grades. We may also assess your personal statement, an external test score, additional written work or an interview.

You can view our admissions policies online at bristol.ac.uk/applicants/policies

Each online course page includes a link to its admissions statement or you can find them all in one place at bristol.ac.uk/study/undergraduate/apply/admissions-statements

Making you an offer

If you are still studying the qualifications that your application is based on, we will make you a conditional offer to achieve specified grades. This will normally be the typical offer listed on the online course finder or an equivalent level in whatever qualification you are studying.

If you are applying with completed qualifications and have already achieved the qualifications we require, we will make you an unconditional offer.

Contextual offers

As part of our commitment to widening participation, we consider the educational context in which your grades have been achieved and may make you a contextual offer if you meet specific criteria.

If you are eligible for a contextual offer, your offer will be at the published typical contextual offer level, which is usually two grades lower than the standard offer. More information, including a list of eligible schools, is available at bristol.ac.uk/contextual-offers

Mature applicants

We welcome applications from mature students and will take into account a range of vocational qualifications and occupational and life experiences, as well as more traditional qualifications. If you have had a gap of some time since your last study or if you do not have traditional qualifications, we may ask you for evidence of recent academic study and invite you to attend an interview. We offer tailored support for mature students considering applying to Bristol: bristol.ac.uk/mature-students

Considering your offer

When we make you an offer we will invite you to an offer holder event, which will take place on campus if possible or online if COVID-19 restrictions are in place. You will learn more about your department, facilities and course and have opportunities to ask questions and explore what it might be like to study at Bristol: bristol.ac.uk/visit-days

From the offers you receive you can select a firm and insurance choice. By making a university your firm choice you are committed to going to that university and that university is committed to accepting you if you meet the terms of your offer. Your insurance choice is intended to be your backup option. For more information about making your choices visit: www.ucas.com/undergraduate

Student agreement

To help create a positive environment for learning and academic achievement, the University has established some regulations that all students must follow if they accept an offer of a place to study with us. These rules include a Student Agreement, which sets out the relationship between the University of Bristol and its students. When we make an offer we will send you all the information you need about the University, including our Student Agreement. Please read this information carefully before making your decision: bristol.ac.uk/applicants/policies

'I visited the city and University to be interviewed and having more time to talk to students on my course proved to be the extra validation I needed to know Bristol was the right place for me.'

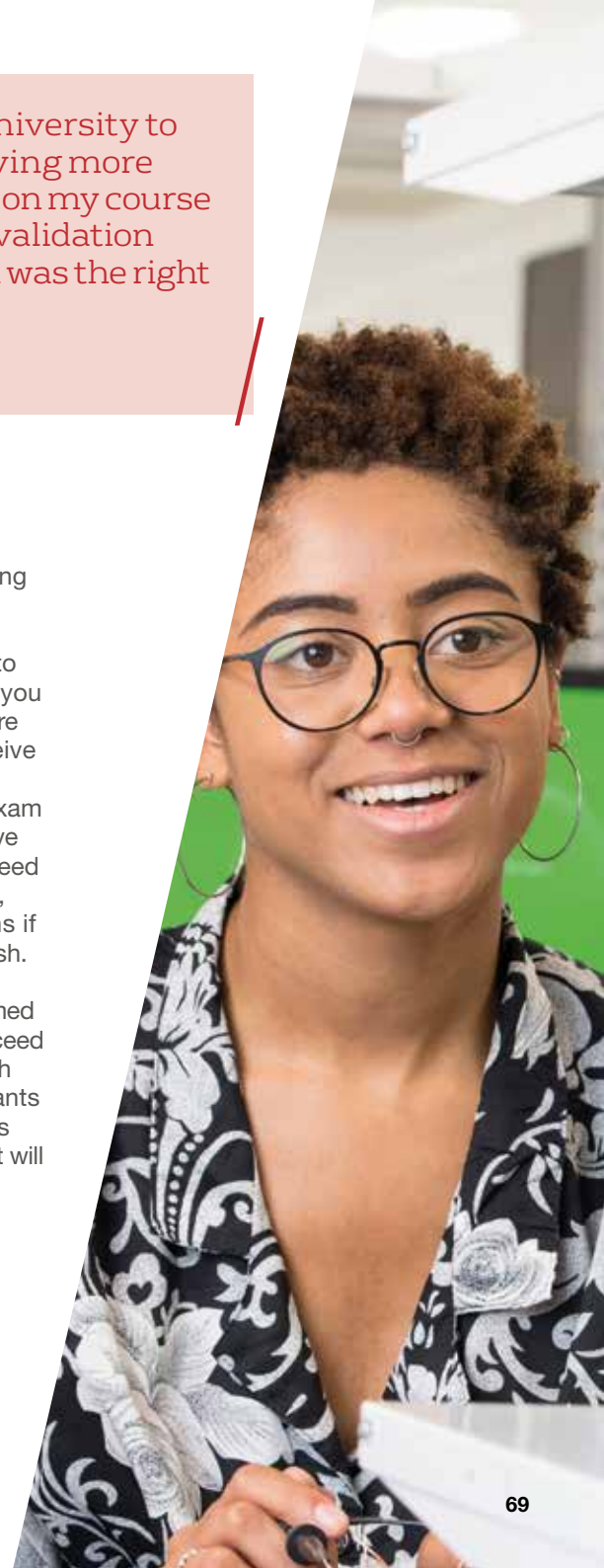
Patrick MEng Engineering Design

Confirming your place

If you have an unconditional offer, you can confirm your place by making us your firm choice.

If your offer is conditional, we need to receive your results and make sure you have met the terms of your offer before we can confirm your place. We receive results for many UK qualifications, such as A-levels, directly from the exam boards via UCAS. If we will not receive your results automatically, you will need to send copies of your results to us, including official English translations if your results are not provided in English.

We are only able to guarantee confirmed places to applicants who meet or exceed the terms of their offer. However, each year we accept a number of applicants who have narrowly missed the terms of their offer but who we are confident will do well at Bristol.



Finance and fees

Studying for a degree is a huge investment in your future and we understand that financing your studies is very important.

To find out more about what financial assistance is available, see page 72.

Fee status

For fees purposes, the University classifies students as home (UK), overseas or Channel Island and Isle of Man students. Further information is available at bristol.ac.uk/ug-fees-funding

Tuition fees – UK students

Tuition fees for UK students in 2021/22 are £9,250. Fees for 2022 entry are expected to be confirmed and published on our website in summer 2021.

Eligible UK students can apply for a loan to cover the full cost of tuition fees. You will not start repaying your loan until you have finished your studies and are earning over the repayment threshold.

Tuition fees – EU students

The UK Government has confirmed that students starting their studies in or after academic year 2021/22 will no longer be eligible for home fee status or financial support to study at universities in England. Fees will be charged in line with overseas students from 2021/22 onwards.

Tuition fees – Channel Island and Isle of Man students

If you usually live in the Channel Islands or Isle of Man, you will not be considered as a home student for funding purposes. The University receives no additional contribution from the UK government towards the cost of your studies.

Your tuition fees and the student support available to you will be different from those for mainland UK students. Visit: bristol.ac.uk/ug-fees-funding or contact your relevant Island Education Authority for more details.

Tuition fees – international students

If you are an international student, your tuition fees will depend on your course of study. Fees for 2022 entry have not been confirmed at the time of writing but the international student fees for 2021/22 are shown as a guide. Fees are reviewed annually and are liable to increase, with the exception of clinical programme fees (BDS, MB ChB, BVSc), which are fixed for the duration of the degree.

Arts-based subjects	£20,100
Science-based subjects	£24,700
BDS Dentistry	£38,000
MB ChB Medicine	£35,000
BVSc Veterinary Science	£32,000

Certain laboratory or studio-based courses in the Faculty of Arts and the Faculty of Social Sciences and Law charge fees at the science-based subject rate. Check our online course finder for tuition fees for your chosen course: bristol.ac.uk/ug-study

For helpful tips on budgeting and ways to make your money go further, go to:

bristol.ac.uk/money-saving-tips



Living expenses

The cost of living in Bristol can vary greatly depending on your lifestyle. You will need to think about accommodation, food, books, entertainment and other costs. For a breakdown of estimated living expenses, visit: bristol.ac.uk/living-expenses

Support with living expenses

If you are a full-time UK student under the age of 60 and studying for your first degree, you may be eligible for a maintenance loan towards your living expenses in addition to your tuition fee loan. The loan amount will depend on your household income. You start repaying the loan once you have graduated and are earning over a certain amount. Further information and terms and conditions are available at www.gov.uk/student-finance

Additional support is available for disabled students and those with childcare costs or adult dependants. Please contact your funding authority for more information.

International student funding

In order to secure a visa to study in the UK, international students need to show they have sufficient funds to cover their first-year tuition fees and living expenses. For information about visas, visit: bristol.ac.uk/directory/visas/tier-4

The UKCISA website also contains useful information on fees and funding for international students: www.ukcisa.org.uk

US loans

For eligible US students, the University is authorised to certify federal student loans (subsidised, unsubsidised and PLUS loans) and private loans. Further details on US loans and how to apply are available at bristol.ac.uk/fees-funding/awards/us-loans

Information and advice

Our Student Funding Office provides information and advice on financial support from the UK government and the University, managing your money, discretionary support and emergency loans: bristol.ac.uk/students/support/finances

Please note: all figures quoted apply to 2021 entry. At the time of writing, 2022 figures have not been set. All figures are subject to change.

Bursaries and scholarships

If you have the talent and ability to succeed at Bristol, concerns about funding should not stop you from applying. The University offers a range of bursaries and scholarships to help.

To find out more about the bursaries and scholarships detailed here and many other funding opportunities, visit: bristol.ac.uk/scholarships

University of Bristol bursary for UK students

The 2022 bursary support package will be announced in summer 2021. As a guide, the bursary support for 2021 entrants is detailed below.

Household income	Bursary entitlement
£25,000 or below	£2,060
£25,001- £30,000	£1,550
£30,001- £35,000	£1,290
£35,001- £40,000	£780
£40,001- £42,875	£520

Conditions apply. To find out if you are eligible, visit bristol.ac.uk/uob-bursary

In addition, there are scholarships funded by University of Bristol friends and alumni. For further information, visit: bristol.ac.uk/additional-funding

Please note: all figures are quoted from 2021/22. Details for 2022/23 are not available at the time of writing. All figures are therefore subject to change.

Black Futures Scholarship

Available to Black and mixed Black heritage UK applicants, these scholarships offer £2,000 during the first year of undergraduate study. Recipients will also have access to up to £2,500 of additional funding to support employment opportunities, such as internships or summer placements: bristol.ac.uk/black-futures-scholarship

Scholarships for international students

In 2021, £1.75 million in scholarships was offered to international students. For the latest information, visit: bristol.ac.uk/international-scholarships

Vice-Chancellor's Scholarships

Vice-Chancellor's Scholarships are available to undergraduate students with exceptional musical, dramatic or sporting talent outside their normal field of study. Each year, we award approximately 20 scholarships of up to £3,000: bristol.ac.uk/vc-scholarship

Access to Bristol bursaries

The University invests in the local community by providing bursaries to those who complete our Access to Bristol scheme. The scheme offers local students a taste of university life through access to our academic expertise and facilities.

Students who successfully complete the Access to Bristol or Pathways to Health Sciences scheme and meet the qualifying household income threshold and other criteria will be eligible for the Access to Bristol bursary.

Details of the 2022 bursary will be announced in summer 2021. As a guide, the bursary for 2021 entrants is as follows:

- a living-cost bursary of £3,855 for each year of the course, providing that students continue to meet the eligibility criteria.

Find out more about the scheme and bursary at bristol.ac.uk/access-to-bristol

A similar bursary is available to students who complete our Bristol Scholars scheme: bristol.ac.uk/bristol-scholars

Lloyds Scholars

The Lloyds Scholars Programme offers students from lower income households a complete package of financial support, at least one paid internship, a business mentor and the opportunity to develop their employability skills, boosting future career prospects. The scheme is open to UK students who are eligible for the Maintenance and Tuition Fee Loan from the Student Loans Company and have an annual household income of £25,000 or below.

For information about the 2022/23 programme, visit: bristol.ac.uk/lloyds-scholars or www.lloyds-scholars.com

University of Bristol Financial Assistance Fund

The University's own financial assistance fund provides discretionary additional support for UK undergraduate students who, through no fault of their own, find themselves in financial difficulty: bristol.ac.uk/emergency-funds-ug

120

*Scholarships funded by
University of Bristol friends
and alumni*

'I've gained so much knowledge from the University even outside my course. I've played basketball for the University and attended careers fairs and skills workshops. I've grown in confidence as a result of the opportunities this scholarship has given me and hope to be able to help in the University as they helped in this stage of my life.'

Sarmad Sanctuary Scholarship Beneficiary



Explore Bristol and find out more

If you are ready to discover more about becoming a University of Bristol student, there are many ways to visit us and find out more.

Open days and virtual open events

Our open events allow you unique access to our departments and residences as well as offering you a chance to experience student life in Bristol. Due to the current uncertainty surrounding COVID-19 and social distancing, we are planning both virtual and physical events. In either circumstance we offer a packed programme of talks and tours, with many opportunities to meet academics, current students and our student services teams. For the latest on upcoming dates and events, visit:

bristol.ac.uk/opendays

We hope to open bookings for our summer 2021 events in the spring.





Tour the campus

When government guidance allows, we will resume our physical campus tours, led by current students. These are typically offered throughout the year. In the meantime, we are hosting regular virtual tours. You can take our self-guided audio walking tour and explore the Clifton campus in your own time. For updates and more information, visit: bristol.ac.uk/campus-tours

Virtual Bristol

If you can't visit us in person, we offer a range of virtual events throughout the year where you can find out more about studying and living in Bristol and ask us your questions. You can also explore university buildings and residences from home via our virtual tour: bristol.ac.uk/virtual-bristol

Meet the team

You can meet with us in person or virtually at one of the higher education or careers fairs we attend throughout the UK. We visit schools and colleges regularly to give talks and run workshops about the admissions process and life at university.

International applicants

Our international recruitment advisers attend education exhibitions around the world as well as running online information sessions. You can find a list of upcoming dates on our website or contact the team for further information: bristol.ac.uk/international/visit

Speak to the Enquiries team

If you have any questions about a course or about making an application to study at Bristol, get in touch.
Tel: **+44 (0)117 394 1649**
Email: choosebristol-ug@bristol.ac.uk

Offer holder events

If you receive an offer from us, you will be invited to spend a day on campus or online exploring your department and meeting students and staff from your course.

Offer holder events aim to give you a deeper insight into what life will be like for you as a Bristol student. You will learn more about how we teach your subject and may be able to attend a taster lecture or practical session. If you're visiting us on campus, you will also be able to view our facilities.

Virtual open week 21-25 June

Find out more:
bristol.ac.uk/ug-visits

● University buildings

- 44 Accommodation Office, The Hawthorns
- 111 Accounting and Finance, 15-19 Tyndall's Park Road
- 20 Aerospace Engineering, Queen's Building
- 23 Anthropology and Archaeology, 43 Woodland Road
- 39 Applied Anatomy, Centre for, Southwell Street
- 23 Arts, School of, 43 Woodland Road
- 40 Arts and Social Sciences Library, Tyndall Avenue
- 66 Arts Faculty Office, entry via 3-5 Woodland Road
- 54 Beacon House Study Centre
- 16 Biochemistry, Biomedical Sciences Building
- 110 Biological Sciences, Life Sciences Building
- 13 Biomedical Sciences Teaching Laboratories
- 68 Business and Management, 12 Priory Road
- 41 Careers Service, Tyndall Avenue
- 16 Cellular and Molecular Medicine, Biomedical Sciences
- 80 Centre for Academic Language and Development
- 80 Centre for Innovation and Entrepreneurship, Richmond Building
- 12 Chemistry, Cantock's Close
- 20 Civil Engineering, Queen's Building
- 66 Classics and Ancient History, entry via 3-5 Woodland Road
- 25 Computer Science, Merchant Venturers Building
- 93 Coombe Dingle Sports Complex
- 96 Dentistry, Bristol Dental School
- 77a Disability Services, Hampton House (rear)
- 26 Earth Sciences, Wills Memorial Building
- 68 Economics, 12 Priory Road
 - 1 Education, School of, 35 Berkeley Square
- 25 Electrical and Electronic Engineering, Merchant Venturers Building
- 20 Engineering Design, Queen's Building
- 20 Engineering Faculty Office, Queen's Building
- 29 Engineering Mathematics, Ada Lovelace Building
- 66 English, 3-5 Woodland Road
- 116 External Relations, 31 Great George Street
- 80 Film and Television, Richmond Building
- 58 French, entry via 3-5 Woodland Road
- 123 Fry Building
- 27 Geographical Sciences, University Road
- 58 German, entry via 3-5 Woodland Road
- 44 Hawthorns, The, Woodland Road
- 41 Health Sciences Faculty Office, Tyndall Avenue
- 58 Hispanic, Portuguese and Latin American Studies, entry via 3-5 Woodland Road
- 66 History and History of Art, entry via 3-5 Woodland Road
- 66 Humanities, School of, entry via 3-5 Woodland Road
- 43 Information Point, Student Information Service, Senate House
- 42 Indoor Sports Centre
- 116 International Office, 31 Great George Street
- 58 Italian, entry via 3-5 Woodland Road
- 26 Law School, Wills Memorial Building
- 110 Life Sciences Building, Tyndall Avenue
- 18 Life Sciences Faculty Office, 69 St Michael's Hill
- 123 Mathematics, Fry Building
- 20 Mechanical Engineering, Queen's Building
- 84 Medicine, Bristol Royal Infirmary
- 25 Merchant Venturers Building, Woodland Road
- 58 Modern Languages, entry via 3-5 Woodland Road
- 76 Multifaith Chaplaincy Centre
- 58 Multimedia Centre (School of Modern Languages)
- 81 Music, Victoria Rooms
- 56 Nursery, 34-35 St Michael's Park
- 78 Philosophy, Cotham House
- 33 Physics, Wills Physics Laboratory, Tyndall Avenue
- 16 Physiology, Pharmacology and Neuroscience, Biomedical Sciences Building
- 47 Policy Studies, 8 Priory Road
- 43 Prospective Student Enquiries, Senate House
- 68 Psychological Science, 12a Priory Road
- 20 Queen's Building (Engineering)
- 66 Religion and Theology, entry via 3-5 Woodland Road
- 80 Richmond Building
- 58 Russian Studies, entry via 3-5 Woodland Road
- 30 Science Faculty Office, Royal Fort House
- 43 Senate House Study Centre, Senate House
- 119 Social Sciences and Law Faculty Office, 2 Priory Road
- 68 Social Sciences Complex, Priory Road
- 72 Sociology, Politics, and International Studies, 11 Priory Road
- 77 Student Counselling Service, Hampton House
- 43 Student Funding Office, Senate House
- 77 Students' Health Service, Hampton House
- 80 Students' Union, Richmond Building
- 80 Swimming Pool, Richmond Building
- 39 Veterinary School, Pre-Clinical, Southwell Street
- 91 Veterinary School, Langford
- 81 Victoria Rooms
 - 7 Wickham Theatre, Cantock's Close
- 26 Wills Memorial Building

🏠 Student Residential Village North

This student village is in Stoke Bishop, approximately two miles or a 40-minute walk from the main campus in Clifton. A regular university bus service runs to the campus and the journey takes around 15 minutes.

North Village residences include Badock Hall, Churchill Hall, Durdham Hall, Hiatt Baker Hall, University Hall and Wills Hall.

🏠 Student Residential Village East

Our East Village residences are based in and around Bristol's city centre, within walking distance of the main campus.

East Village residences include Campus Houses (St Michael's Park, St Michael's Hill and Woodland Road), Colston Street, Culver House, Dean Street Works, New Bridewell, Orchard Heights, Redland Road, Riverside, The Courtrooms and Unite House.

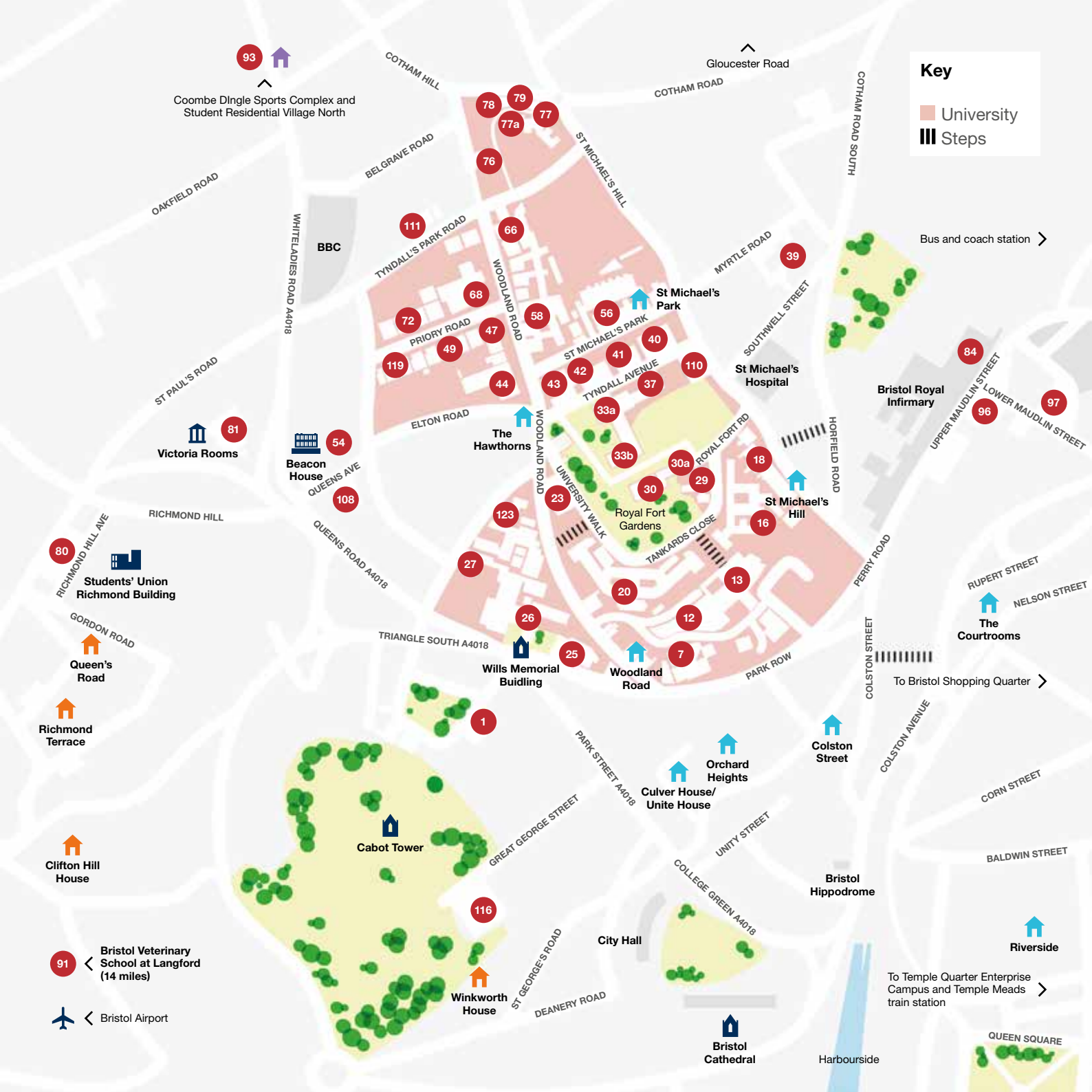
🏠 Student Residential Village West

Based in and around Clifton Village, these residences are a 15-minute walk from the Clifton campus. Northwell House is located near the popular Gloucester Road.

West Village residences include Clifton Hill House, Goldney Hall, Hillside Woodside, Manor Hall, Northwell House, Queen's Road, Richmond Terrace and Winkworth House.

Transport

If you live in University-allocated accommodation, you can travel for free on the University bus service. For more information about accommodation see page 30.



Key

- University
- Steps

93
 Coombe Dingle Sports Complex and Student Residential Village North

Gloucester Road

OAKFIELD ROAD

COTHAM HILL

COTHAM ROAD

COTHAM ROAD SOUTH

Bus and coach station

WHITELADIES ROAD A4018

BBC

BELGRAVE ROAD

TYNDALL'S PARK ROAD

WOODLAND ROAD

ST MICHAEL'S HILL

MYRTLE ROAD

SOUTHWELL STREET

ST PAUL'S ROAD

81
 Victoria Rooms

Beacon House

ELTON ROAD

The Hawthorns

St Michael's Park

St Michael's Hospital

Bristol Royal Infirmary

UPPER MAUDLIN STREET

84

96

97

RICHMOND HILL

80
 Students' Union Richmond Building

QUEENS AVE

108

TYNDALL AVENUE

44

43

42

41

40

110

LOWER MAUDLIN STREET

84

96

97

RICHMOND HILL AVE

8
 Queen's Road

QUEENS AVE

108

TYNDALL AVENUE

44

43

42

41

40

110

LOWER MAUDLIN STREET

84

96

97

RICHMOND HILL AVE

8
 Queen's Road

QUEENS AVE

108

TYNDALL AVENUE

44

43

42

41

40

110

LOWER MAUDLIN STREET

84

96

97

RICHMOND HILL AVE

8
 Queen's Road

QUEENS AVE

108

TYNDALL AVENUE

44

43

42

41

40

110

LOWER MAUDLIN STREET

84

96

97

RICHMOND HILL AVE

8
 Queen's Road

QUEENS AVE

108

TYNDALL AVENUE

44

43

42

41

40

110

LOWER MAUDLIN STREET

84

96

97

RICHMOND HILL AVE

8
 Queen's Road

QUEENS AVE

108

TYNDALL AVENUE

44

43

42

41

40

110

LOWER MAUDLIN STREET

84

96

97

RICHMOND HILL AVE

8
 Queen's Road

QUEENS AVE

108

TYNDALL AVENUE

44

43

42

41

40

110

LOWER MAUDLIN STREET

84

96

97

RICHMOND HILL AVE

8
 Queen's Road

QUEENS AVE

108

TYNDALL AVENUE

44

43

42

41

40

110

LOWER MAUDLIN STREET

84

96

97

RICHMOND HILL AVE

8
 Queen's Road

QUEENS AVE

108

TYNDALL AVENUE

44

43

42

41

40

110

LOWER MAUDLIN STREET

84

96

97

RICHMOND HILL AVE

8
 Queen's Road

QUEENS AVE

108

TYNDALL AVENUE

44

43

42

41

40

110

LOWER MAUDLIN STREET

84

96

97

RICHMOND HILL AVE

8
 Queen's Road

QUEENS AVE

108

TYNDALL AVENUE

44

43

42

41

40

110

LOWER MAUDLIN STREET

84

96

97

RICHMOND HILL AVE

8
 Queen's Road

QUEENS AVE

108

TYNDALL AVENUE

44

43

42

41

40

110

LOWER MAUDLIN STREET

84

96

97

RICHMOND HILL AVE

8
 Queen's Road

QUEENS AVE

108

TYNDALL AVENUE

44

43

42

41

40

110

LOWER MAUDLIN STREET

84

96

97

RICHMOND HILL AVE

8
 Queen's Road

QUEENS AVE

108

TYNDALL AVENUE

44

43

42

41

40

110

LOWER MAUDLIN STREET

84

96

97

RICHMOND HILL AVE

8
 Queen's Road

QUEENS AVE

108

TYNDALL AVENUE

44

43

42

41

40

110

LOWER MAUDLIN STREET

84

96

97

RICHMOND HILL AVE

8
 Queen's Road

QUEENS AVE

108

TYNDALL AVENUE

44

43

42

41

40

110

LOWER MAUDLIN STREET

84

96

97

RICHMOND HILL AVE

8
 Queen's Road

QUEENS AVE

108

TYNDALL AVENUE

44

43

42

41

40

110

LOWER MAUDLIN STREET

84

96

97

RICHMOND HILL AVE

8
 Queen's Road

QUEENS AVE

108

TYNDALL AVENUE

44

43

42

41

40

110

LOWER MAUDLIN STREET

84

96

9

Open events

June

Register now for our virtual open week
21-25 June 2021

September

Details to be confirmed

bristol.ac.uk/ug-visit

**If you need all or part of this
publication in an alternative
format, please contact us:**

+44 (0)117 394 1649

choosebristol-ug@bristol.ac.uk

Contact us:

Tel: +44 (0)117 394 1649

Email: choosebristol-ug@bristol.ac.uk

For up-to-date information visit:

bristol.ac.uk/ug-study

 [@BristolUni](https://twitter.com/BristolUni)

 [bristoluniversity](https://www.facebook.com/bristoluniversity)

 [UniversityofBristol](https://www.instagram.com/UniversityofBristol)

 [UniversityofBristol](https://www.youtube.com/UniversityofBristol)

