



# HEB Newsletter

## Health Economics at Bristol (HEB)

In July the  
**HEB Team**  
moved to our new  
offices!

We are now at  
1-5 Whiteleadies  
Road.



## Welcome from Will

Hello and welcome to the Autumn 2018 issue of the HEB Newsletter. Inside this new look issue, you'll find an overview of the excellent Summer HESG hosted by HEB — a big thank you to all who volunteered, participated and contributed to making it such a success. We hope those with papers went away enthused and armed with some valuable feedback to write some thought-provoking papers. We enjoyed it so much that, unlike last time, we won't wait another 20 or so years to host HESG again!

Since the last issue of the newsletter we have been busy preparing lectures for this academic year, including a module for the new MSc in Public Health being run through the School as well as the HEB short course on '*Introduction to Economic Evaluation*' and, new for this academic year, pilot short courses on '*Economic Evaluation and Modelling Using R*' and '*Introduction to Qualitative Methods for Health Economics*'. For the latter two, we hope to open recruitment more generally in 2019/20. We've also welcomed three new staff members to the team.

Highlights from our applied research include developing links between health economists and local commissioning groups to support decision-making, NIHR doctoral fellowship research around preparing for kidney failure and the use of discrete choice experiments to inform kidney services, and we once again highlight our links with colleagues from the Economics department. We continue to strengthen collaborations with the Economics department by carrying out joint research and teaching. Happy reading!

*Will Hollingworth*, Director of HEB

### Population Health Sciences

University of Bristol, Bristol, BS8 1NU

Email: [health-econ-feedback@bristol.ac.uk](mailto:health-econ-feedback@bristol.ac.uk)

[www.bristol.ac.uk/health-economics](http://www.bristol.ac.uk/health-economics) [@UoBrisHEB](https://twitter.com/UoBrisHEB)



University of  
**BRISTOL**

# HEB Hosts HESG 2018



## HESG @ Mercure Holland House Hotel

HEB was delighted to host the UK Health Economists' Study Group (HESG) meeting in June. Over 100 external delegates joined members of HEB at the Mercure Holland House Hotel and Spa in the heart of Bristol.

HESG is a regular feature on the schedule of UK based health economists and the Bristol HESG provided excellent research discussions as well as a chance to network at the social events.

The programme included a plenary on the opportunities and challenges of Brexit for health economists, delivered by Paula Lorgelly from the Office of Health Economics, Andrew Street from

the London School of Economics and HEB's own PhD student, Ellen Rule, also Director of Transformation at Gloucestershire CCG.

Fifty papers from authors representing 20 different organisations were discussed in hour long parallel sessions, and HEB was well represented, with seven papers discussed.

- **Sabina Sanghera:** *"Measuring QALYs when health states fluctuate"*
- **Joanna Thorn:** *"Design and preliminary findings of a Delphi consensus survey to identify the essential content of Health Economics Analysis Plans (HEAPs)"*
- **Jeff Round:** *"Work first, care later: the impact of labour market participation on informal caring"*
- **Kirsty Garfield:** *"A review of methods used in the development of resource-use questionnaires"*
- **Zoe Ward:** *"The cost-effectiveness of interventions to improve case-finding and engagement with HCV treatment for people who inject drugs in the UK."*
- **Paul Mitchell:** *"What quality of life measure to use in an economic evaluation of people with kidney disease? A think-aloud study using the EQ-5D-5L, ICECAP-A and ICECAP-O"*
- **Stephanie von Hinke:** *"The effect of education on the nutritional composition of the diet"*

Other co-authors from HEB included: **Joanna Coast, Will Hollingworth, Sam Husbands, Sian Noble and Peter Vickerman**. HEB members also played a crucial role in discussing and chairing with further contributions from: **Aideen Ahern, Pdraig Dixon, Rebecca Kandiyali, Myles-Jay Linton, Caoimhe Rice and Nicky Welton**.

### HEB Research Themes:

Economics of Health and Care across the Life Course  
 Methods for Applied Health Economics  
 Efficiency and Equity in Decision Making



## Knowledge mobilisation and commissioner friendly health economics



Rebecca

Rebecca Kandyali has been awarded a Researcher in Residence associate fellowship to examine how health economists can support local commissioning decisions in the current financial climate.

Part of her role has been to establish a commissioner-friendly health economics steering group and to develop training within the newly merged commissioning group of Bristol, North Somerset and South Glos (BNSSG).

The aim is not necessarily to come up with solutions to all the problems within a session, but to start a dialogue about the day-to-day economic issues that commissioners are dealing with (possibly without realising it!).

 [@kandibex](#)

## UNPACK Study



Barny

Kidney failure most commonly affects older people. By the time it approaches, most older people are too unwell to receive a transplant.

They decide instead whether to prepare for dialysis, or non-dialysis 'conservative care' – where medicines and support are used to keep them feeling as well as possible.

The oldest, and least well, live for about the same amount of time, whether they prepare to start dialysis or prepare for conservative care. The UNPACK study is using interviews with people who have kidney disease and those close to them to understand how they decide how to prepare for kidney failure.

Subsequently a discrete choice experiment will be used to quantify the trade-offs people make when deciding what to do. Findings will inform the development of kidney services that better-match their needs.

 [@barnyhole](#)

## HEB's links across the University

### Stephanie von Hinke Kessler Scholder (affiliate member of HEB).



Stephanie

Together with a team at Erasmus University Rotterdam, the University of Zurich, the University of Tartu, and colleagues at the University of Bristol, Stephanie has recently been awarded a three-year grant to examine how genes and the environment (GxE) interact to generate inequalities in health and education over the life course.

The NORFACE DIAL project will go beyond the old 'nature versus nurture' debate by testing two novel hypotheses:

1. Children born into advantaged environments are better able to reach their genetically conditioned potential.
2. A privileged environment protects against genetic susceptibility to risky health behaviour.

Both hypotheses propose a GxE interplay that influences the transition from early childhood to adulthood in periods that are critical to the generation of inequalities.

## Subscribe to the PECUNIA Newsletter

PECUNIA was mentioned in the last HEB newsletter – the EU-funded project aims to provide direct comparable solutions to improve chronic and mental healthcare in all EU health systems.

Subscribe to the newsletter <https://www.pecunia-project.eu/> or follow the study on Twitter [https://twitter.com/Pecunia\\_EU](https://twitter.com/Pecunia_EU).

## Key publications

### Efficiency and Equity in Decision Making

**Dixon P**, Davey Smith G, **Hollingworth W**. The association between adiposity and inpatient hospital costs in the UK Biobank cohort. bioRxiv. 2018. [10.1101/399600](https://doi.org/10.1101/399600)

Dritsaki M, Gray A, Petrou S, Dutton S, Lamb SE, **Thorn JC**. Current UK Practices on Health Economics Analysis Plans (HEAPs). *PharmacoEconomics*. 2018;36(2):253-7. [10.1007/s40273-017-0598-x](https://doi.org/10.1007/s40273-017-0598-x)

**Keeney E**, Dawoud D, Dias S. Different Methods for Modelling Severe Hypoglycaemic Events. *PharmacoEconomics*. 2018:1-10. [10.1007/s40273-018-0612-y](https://doi.org/10.1007/s40273-018-0612-y)

Phillippo D, Ades T, Dias S, Palmer S, Abrams K, **Welton N**. Methods for Population-Adjusted Indirect Comparisons in Health Technology Appraisal. *Medical Decision Making*. 2018;38(2):200-11. [10.1177/0272989X17725740](https://doi.org/10.1177/0272989X17725740)

### Economics of Health Care across the Life Course

Kinghorn P, **Coast J**. Assessing the capability to experience a 'good death'. *PLoS ONE*. 2018;13(2). [10.1371/journal.pone.0193181](https://doi.org/10.1371/journal.pone.0193181)

### Methods for Applied Health Economics

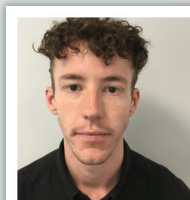
**Linton M-J**, Jones T, **Owen-Smith A**, Payne R, **Coast J**, **Glynn J**, **Hollingworth W** et al. Breaking bread: Examining the impact of policy changes in access to state-funded provisions of gluten-free foods in England. *BMC Medicine*. 2018;16(1). [10.1186/s12916-018-1106-7](https://doi.org/10.1186/s12916-018-1106-7)

**Thorn JC**, Brookes ST, Ridyard C, Riley R, Hughes DA, Wordsworth S, **Noble SM**, Thornton G, **Hollingworth W** et al. Core Items for a Standardized Resource Use Measure (ISRUM). *Value in Health*. 2018;21(6):640-9. [10.1016/j.jval.2017.06.011](https://doi.org/10.1016/j.jval.2017.06.011)

**Dixon P**, Beaver K, Williamson S, Sutton C, Martin-Hirsch P, **Hollingworth W**. Cost-Consequence Analysis Alongside a Randomised Controlled Trial of Hospital Versus Telephone Follow-Up after Treatment for Endometrial Cancer. *Applied Health Economics and Health Policy*. 2018;16(3):415-27. [10.1007/s40258-018-0378-6](https://doi.org/10.1007/s40258-018-0378-6)

**Owen-Smith A**, **Coast J**, Donovan J. Self-responsibility, rationing and treatment decision making – managing moral narratives alongside fiscal reality in the obesity surgery clinic. *Health Expectations*. 2018;21(3):606-14. [10.1111/hex.12651](https://doi.org/10.1111/hex.12651)

## HEB is growing!



Gareth

Gareth joined HEB in July and will be working with **Joanna Coast** and **Paul Mitchell** on research into the economics of end of life care.

The projects are within the context of care in advanced dementia and hospice based palliative care, involving the assessment of the use of health and capability measures and collection cost data for use in definitive studies.



Joel

Joel joined HEB in September and will be working with **William Hollingworth** and **Rebecca Kandiyali** on several projects including studies on hip and pelvic fractures.

He will also be joining the Research Design Service.



Katie

Katie joined HEB in October.

She will be working with **Rebecca Kandiyali** and **William Hollingworth** on several NIHR funded projects including two exploring the application of digital technologies - PALS, a Project about Loneliness and Social networks (PI: Anne Rogers, University of Southampton) and a project looking at cerebral visual impairment in children (PI: Cathy Williams).

She will also be joining the Research Design Service.

@K\_Breheny

## Bookings are open for our short course

### *Introduction to Economic Evaluation* 24th – 26th April 2019

Designed for clinicians, public health specialists and health care researchers. No previous knowledge required. We still have places left - for further details and to book please click [here](#)

## Population Health Sciences

University of Bristol, Bristol, BS8 1NU

Email: [health-econ-feedback@bristol.ac.uk](mailto:health-econ-feedback@bristol.ac.uk)

[www.bristol.ac.uk/health-economics](http://www.bristol.ac.uk/health-economics) @UoBrisHEB



University of  
**BRISTOL**