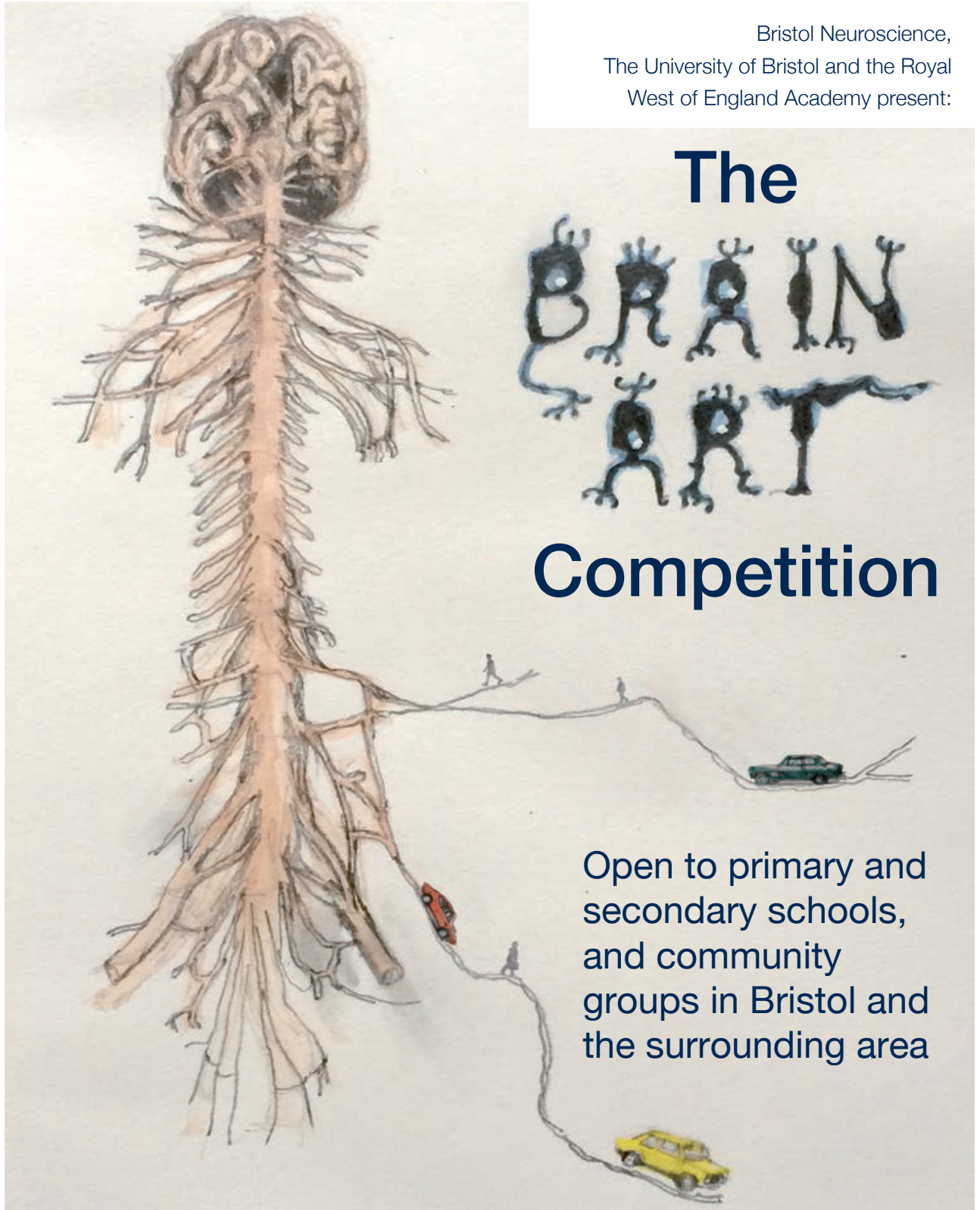


Bristol Neuroscience,
The University of Bristol and the Royal
West of England Academy present:





The Competition

Schools and community groups across Bristol and the surrounding area are invited to take part in an exciting art competition, coinciding with the fourth Bristol Neuroscience Festival to be held at the Wills Memorial Building, University of Bristol from **2nd to 4th March 2023**. The competition is being run by Bristol Neuroscience in conjunction with the Royal West of England Academy.

Theme

The festival is a celebration of neuroscience research and we are looking for artwork that is broadly brain-related. The topic for British Science week in 2023 is **“Connections”** and the judges will be hoping to see work inspired by this theme. For examples of previous artwork submitted please take a look at our website:

Prizes

Entries will be judged on originality and creativity. The judges will be looking for an imaginative response to the theme.

There are six prizes in total. First and runner up prizes will be awarded in three categories: Primary School, Secondary School and Community Groups. We will also award commendations for other strong submissions. All prize winning and commended pieces of work will be displayed in the lower ground floor gallery at the RWA from 6th March to 10th April 2023, where members of the public will be able to view the work for free during normal RWA opening hours.

1st Prize: £100.00 of Amazon vouchers

Runner-up Prize: £50.00 of Amazon vouchers



Entries

The competition is divided into three categories: Primary School (Key Stages 1 & 2); Secondary School (Key Stages 3, 4 & 5) and Community Groups (any age). Any 2D artwork submitted must be A4 in size (297mm x 210mm). Entrants can use a range of materials and techniques from the following list: drawing (e.g. pencil, pen, crayon, pastel, etc.), painting, printmaking, collage, textile or photography. The judges are also keen to receive 3D representations provided they are no larger than 400mm in height, width or depth.

The deadline for receipt of entries is **13th February 2023**. Any entries received after this date will not be considered.

To enter please download your Entry Kit at:

www.bristol.ac.uk/neuroscience/bnf/2023-event/

This year we are hoping to provide an opportunity for schools to have access to a neuroscientist.

We are also hoping to be able to support the cost of a local artist to deliver a workshop to local community groups.

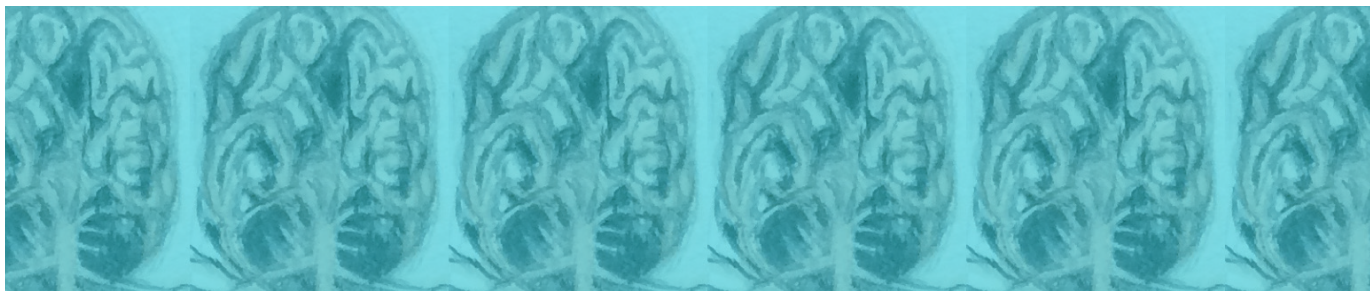
Note that this will be subject to us obtaining the necessary funding. To access a visit please complete the appropriate online request form using the QR code below.



**School request for
visit from a neuroscientist**



**Community Group request
for a visit from an artist**



Judges

Helen Jacobs (RWA Bristol)

Helen has an Education role at RWA which involves planning and programming participatory arts activities for visitors to enjoy. She manages artists and learners on workshops and projects that are inspired by - and run alongside - the exhibitions in the galleries. Her background is in sculpture (specifically metalwork) making bronze sculpture for the leading artists of our time.

Catherine Knight

Catherine is a painter based at BV Studio Bristol and an RWA Artist Network member. Since graduating from an MA in Fine Art at Bath Spa University in 2008 with a distinction, she has exhibited widely in both private and public gallery spaces including Wolverhampton Art Gallery and a Solo show at Exeter Phoenix Gallery in 2021. Most notably she was an invited artist at the Discerning Eye exhibition in 2014, shortlisted for the Jackson's Art prize in 2021 and won the Insight Art Prize at the Royal Watercolour Society Open in 2022.

Nik Ramage

Nik is a mechanical sculptor, whose sculptures are informed by tinkering fingers and a wandering brain. He has had solo shows in Hong Kong, a medieval castle and Paul Smith's Mayfair basement.

Michael Banissy (University of Bristol)

Michael is Head of the School of Psychological Science. His main themes of research relate to the study of social perception and social cognition. He is passionate about public engagement and has worked with artists in this capacity for a number of years.

For enquiries, please contact bnf-2023@bristol.ac.uk and include **Brain Art** in the subject heading.