

Bristol Neuroscience,
The University of Bristol and the Royal
West of England Academy present:

The BRAIN ART Competition

Open to primary and
secondary schools
in Bristol and the
Surrounding Area

Closing Date: 5th February 2018



The Competition

Schools across Bristol and the surrounding area are invited to take part in an exciting, new art competition, coinciding with the second Bristol Neuroscience Festival (to be held at the Wills Memorial Building, University of Bristol from 22-24 March 2018.) This competition is being run by Bristol Neuroscience in conjunction with the Royal West of England Academy.

Theme

The festival is a celebration of Neuroscience Research and we are looking for artwork that is broadly brain-related. This could include structural representation of the brain or its component parts, through to portrayals of the behavioural aspects of brain function and dysfunction (dementia or stroke, for example).

Prizes

Entries will be judged on originality and creativity. Judges will be looking for an imaginative response to the theme.

There are six prizes in total. First and runner-up prizes will be awarded in each of the three age groups: Primary, Lower Secondary and Upper Secondary. We will also award commendations for other strong submissions. All prize winning and commended pieces of work will be on display at the RWA from 6th March to 25th March 2018, where members of the public will be able to view the work for free, during normal RWA opening hours.

1st Prize: £100.00

2nd Prize: £50.00



Entries

The competition is open to 5–18 year olds and is divided into three categories: Primary (Key Stages 1 & 2); Lower Secondary (Key Stages 3 and 4) and Upper Secondary (Key Stage 5). Any 2D artwork submitted must be no larger than A3 in size (420mm x 297mm). Entrants can use a range of materials and techniques from the following list: drawing (e.g. pencil, pen, crayon, pastel, etc.), painting, printmaking, collage, textile or photography. The judges are also keen to receive 3D representations provided they are no larger than 400mm in height, width or depth.

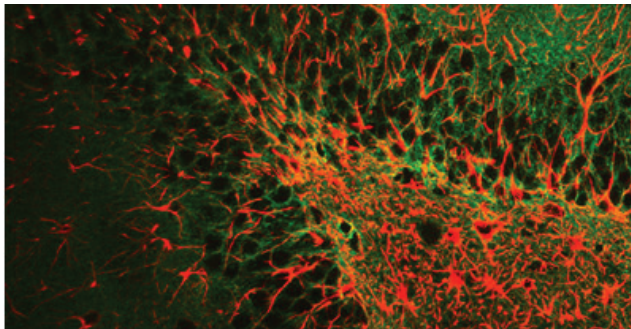
The deadline for receipt of entries is **5th February 2018**, entries received after this date may not be accepted.

To keep the possible number of submissions to a manageable level, schools may submit **no more than 5 entries** in each age category.

To enter please download your Entry Kit at:

<http://seis.bris.ac.uk/~psdjt/homepage/BrainArt>

Please be aware that we are unable to return any artwork after the event. The winning entries and those commended by the judges will be put on public display at the RWA and following that will be offered for display around the University of Bristol and the wider region.



*Stellar Brain by
Dr Flavie Kersante*

*School of Physiology and
Pharmacology*

University of Bristol

*An image through a brain,
showing neurons in red
and astrocytes, in green.*



Judging

Judging will take place on 12th February 2018, and winners will be notified the following week.

The judging panel will include:

Dr Sue Pickering (Creative Bristol)

Sue has a PhD from the University of Sheffield and worked as a cognitive psychologist until 2008. She is a mixed media artist and her work can be seen in shops, exhibitions and art trails around Bristol. In 2013 Sue founded the community project Creative Bristol.

Joel Edwards (RWA, Bristol)

Joel is the Learning and Participation Manager at the RWA. He is responsible for programming a wide range of educational activities and events for people of all ages and backgrounds.

Mr Dallas Collins RWA Newwork Artist

Dallas Collins studied sculpture at the RCA, specialising in foundry art practice. He has exhibited throughout the UK and abroad and his work is held in several private and public art collections.

“Art & science has played an important part within my work whether it’s science fiction or science fact...I’ve lived with engineering and technology all my life and transferring these skills into art has played an important part in where I stand today as an artist.”

For enquiries, please contact psych-outreach@bristol.ac.uk and include Brain Art in the subject heading.