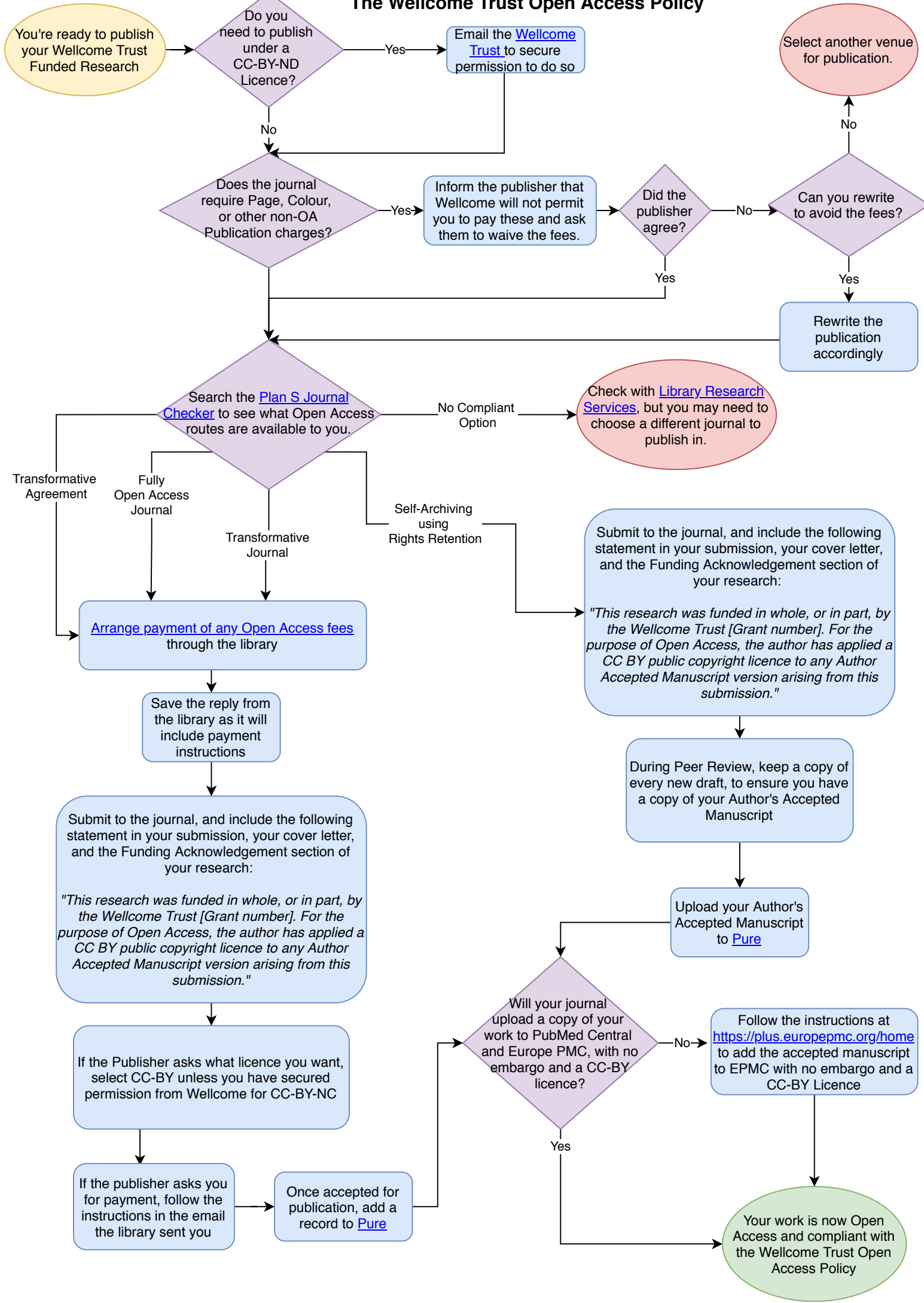


# The Wellcome Trust Open Access Policy



You're ready to publish your Wellcome Trust Funded Research

Do you need to publish under a CC-BY-ND Licence?

Email the [Wellcome Trust](#) to secure permission to do so

Select another venue for publication.

Does the journal require Page, Colour, or other non-OA Publication charges?

Inform the publisher that Wellcome will not permit you to pay these and ask them to waive the fees.

Did the publisher agree?

Can you rewrite to avoid the fees?

Rewrite the publication accordingly

Search the [Plan S Journal Checker](#) to see what Open Access routes are available to you.

Check with [Library Research Services](#), but you may need to choose a different journal to publish in.

Transformative Agreement

Fully Open Access Journal

Transformative Journal

Self-Archiving using Rights Retention

[Arrange payment of any Open Access fees](#) through the library

Submit to the journal, and include the following statement in your submission, your cover letter, and the Funding Acknowledgement section of your research:  
  
*"This research was funded in whole, or in part, by the Wellcome Trust [Grant number]. For the purpose of Open Access, the author has applied a CC BY public copyright licence to any Author Accepted Manuscript version arising from this submission."*

Save the reply from the library as it will include payment instructions

During Peer Review, keep a copy of every new draft, to ensure you have a copy of your Author's Accepted Manuscript

Submit to the journal, and include the following statement in your submission, your cover letter, and the Funding Acknowledgement section of your research:  
  
*"This research was funded in whole, or in part, by the Wellcome Trust [Grant number]. For the purpose of Open Access, the author has applied a CC BY public copyright licence to any Author Accepted Manuscript version arising from this submission."*

Upload your Author's Accepted Manuscript to [Pure](#)

If the Publisher asks what licence you want, select CC-BY unless you have secured permission from Wellcome for CC-BY-NC

Will your journal upload a copy of your work to PubMed Central and Europe PMC, with no embargo and a CC-BY licence?

Follow the instructions at <https://plus.europepmc.org/home> to add the accepted manuscript to EPMC with no embargo and a CC-BY Licence

If the publisher asks you for payment, follow the instructions in the email the library sent you

Once accepted for publication, add a record to [Pure](#)

Your work is now Open Access and compliant with the Wellcome Trust Open Access Policy