

education

data lab

research • analysis • evidence

Changes in assessment measures - implications for researchers

Philip Nye

Education Data Lab, [@edudatalab](https://twitter.com/edudatalab)

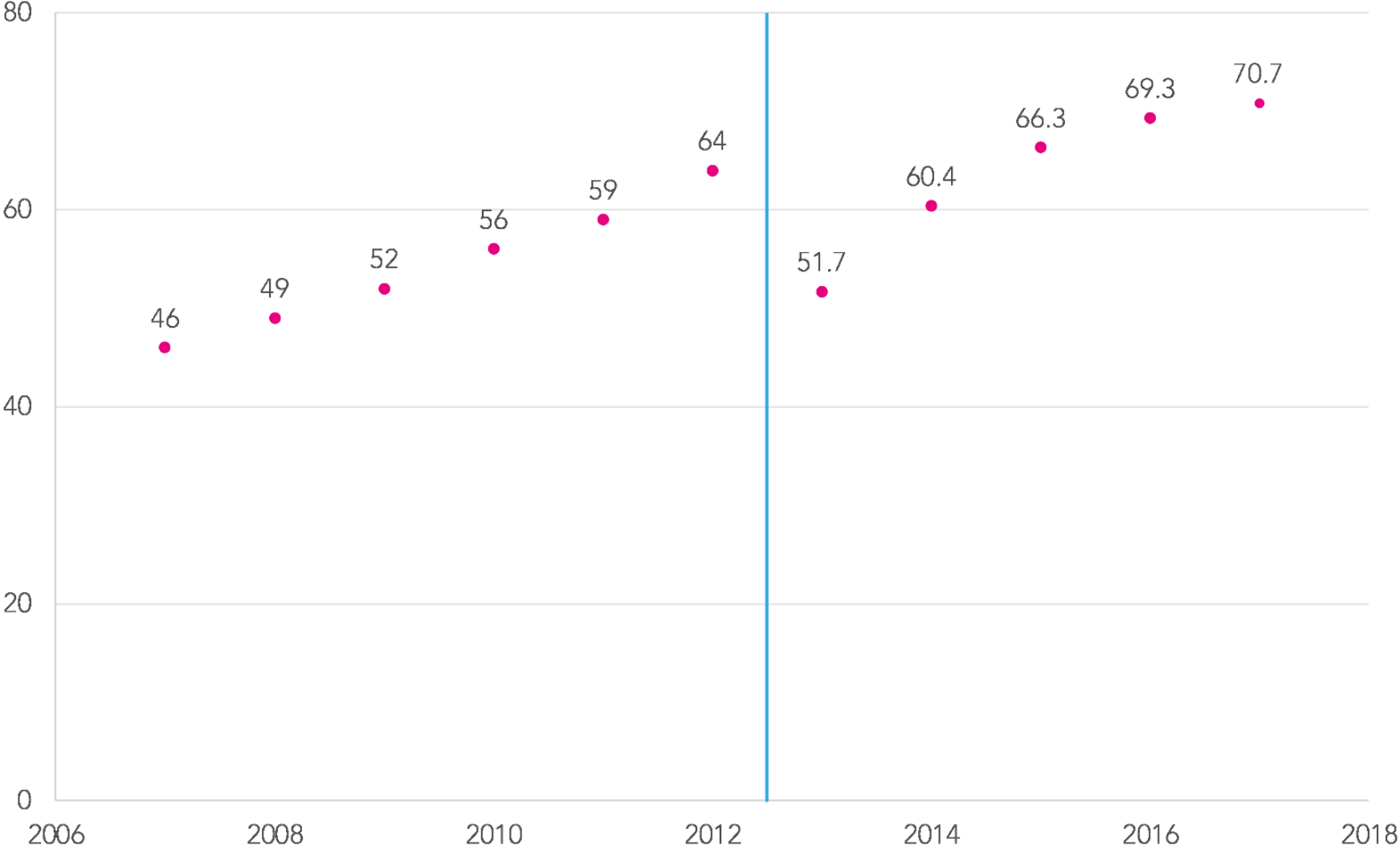


Foundation Stage

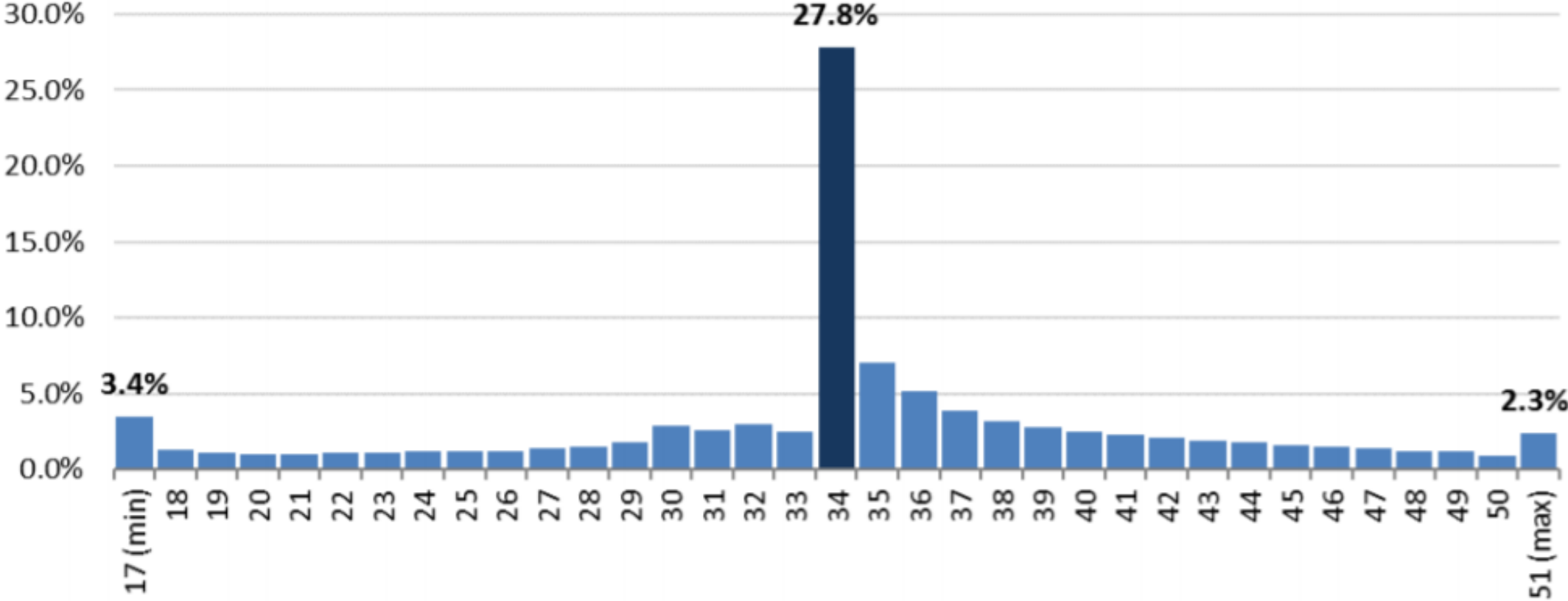
Overview

- pre-2012/13:
 - assessed against 13 assessment scales, graded 1-9
- 2012/13 onwards:
 - assessed against 17 early learning goals (not tests), graded as:
 - emerging standard
 - expected standard
 - exceeded standard

Percentage reaching a good level of development at FSP



**Figure F: Total points score distribution in the EYFSP for all pupils
England, 2017**



Future

- reduction in the number of early learning goals assessed?
- another band within emerging standard?



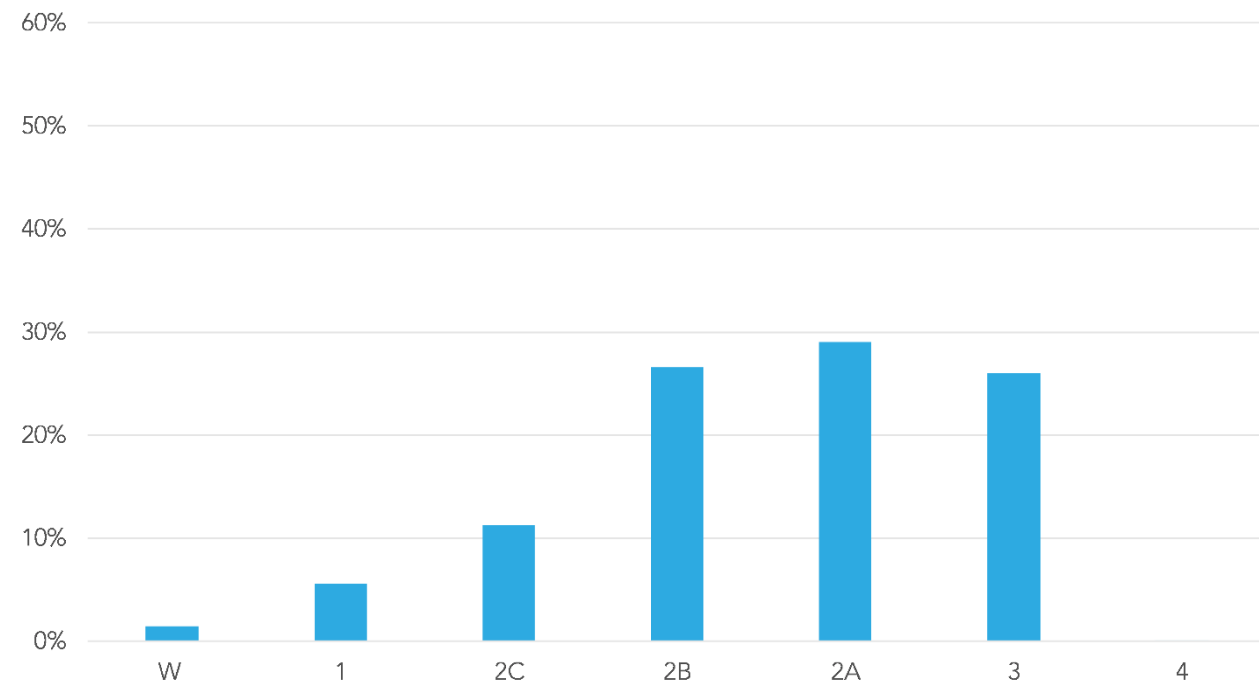
KS 1

Overview

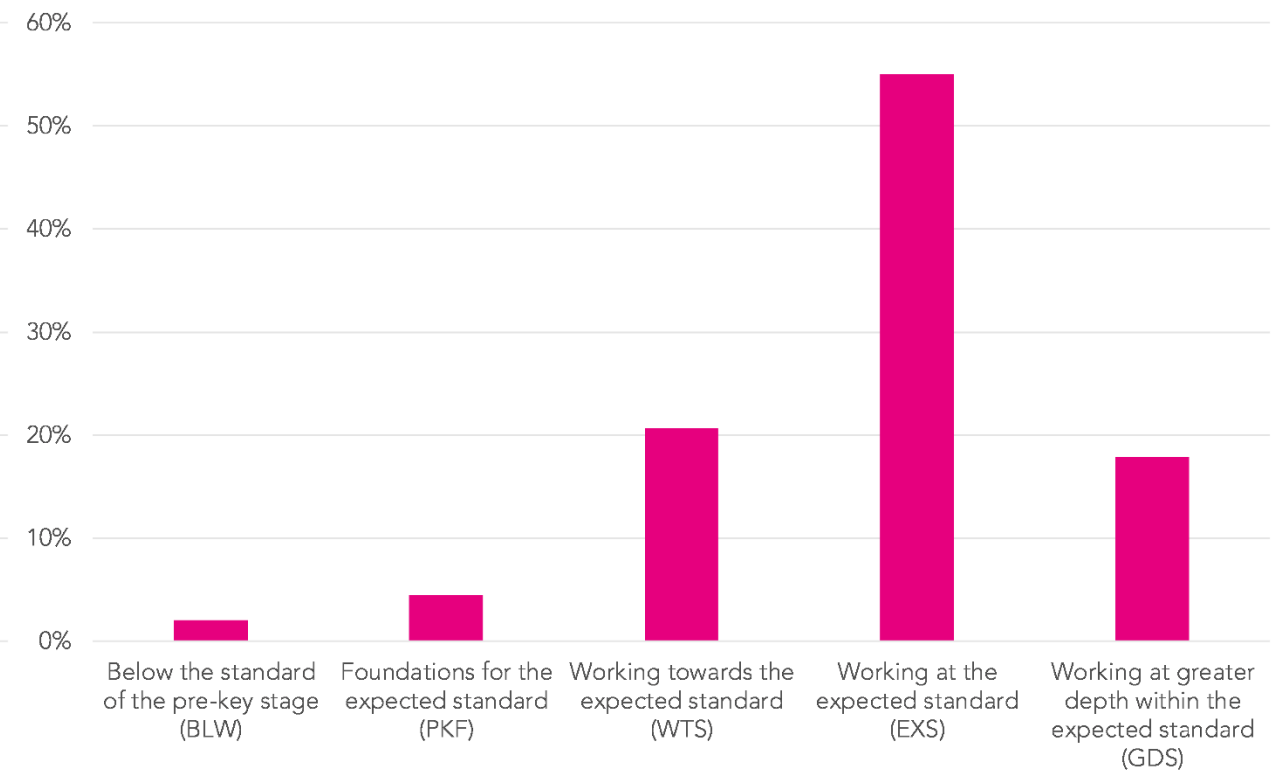
- pre-2015/16
 - Levels
- 2015/16 onwards
 - scaled scores for tests
 - teacher assessment judgements

New v old KS1

Spread of KS1 maths results, 2014/15



Spread of KS1 maths results, 2015/16



Future

- from this year: more flexible approach to assessing writing
- 2022/23: will cease to be statutory



KS2

Overview

- pre-2015/16
 - Levels
- 2015/16 onwards
 - scaled scores
 - range from 80 to 120
 - 100 is the expected standard (but not the average)

The new tests

- Rapid increase in results as schools get used to assessment
 - 2015/16: 53% at expected standard in reading, writing and maths
 - 2016/17: 61%
- Results at school-level are volatile, but only as volatile as they were previously
 - 2013/14 to 2014/15: correlation of 0.58 in reading, writing, maths results
 - 2014/15 to 2015/16: correlation of 0.56

Writing TA moderation

Consistency of local authority writing standards versus reading in 2016



Future

- from this year: more flexible approach to assessing writing
- 2018/19: reading and maths teacher assessment removed



KS4

Overview

- timeline
 - 2017: Eng language, Eng literature, maths only
 - 2018: most mass-entry subjects
 - 2019: some remaining subjects (e.g. D&T)
 - 2020: final ancient and modern languages

9-1 grades

New grading structure	Current grading structure
9	A*
8	
7	
6	B
5	C
4	
3	D
2	E
1	F
	G
U	U

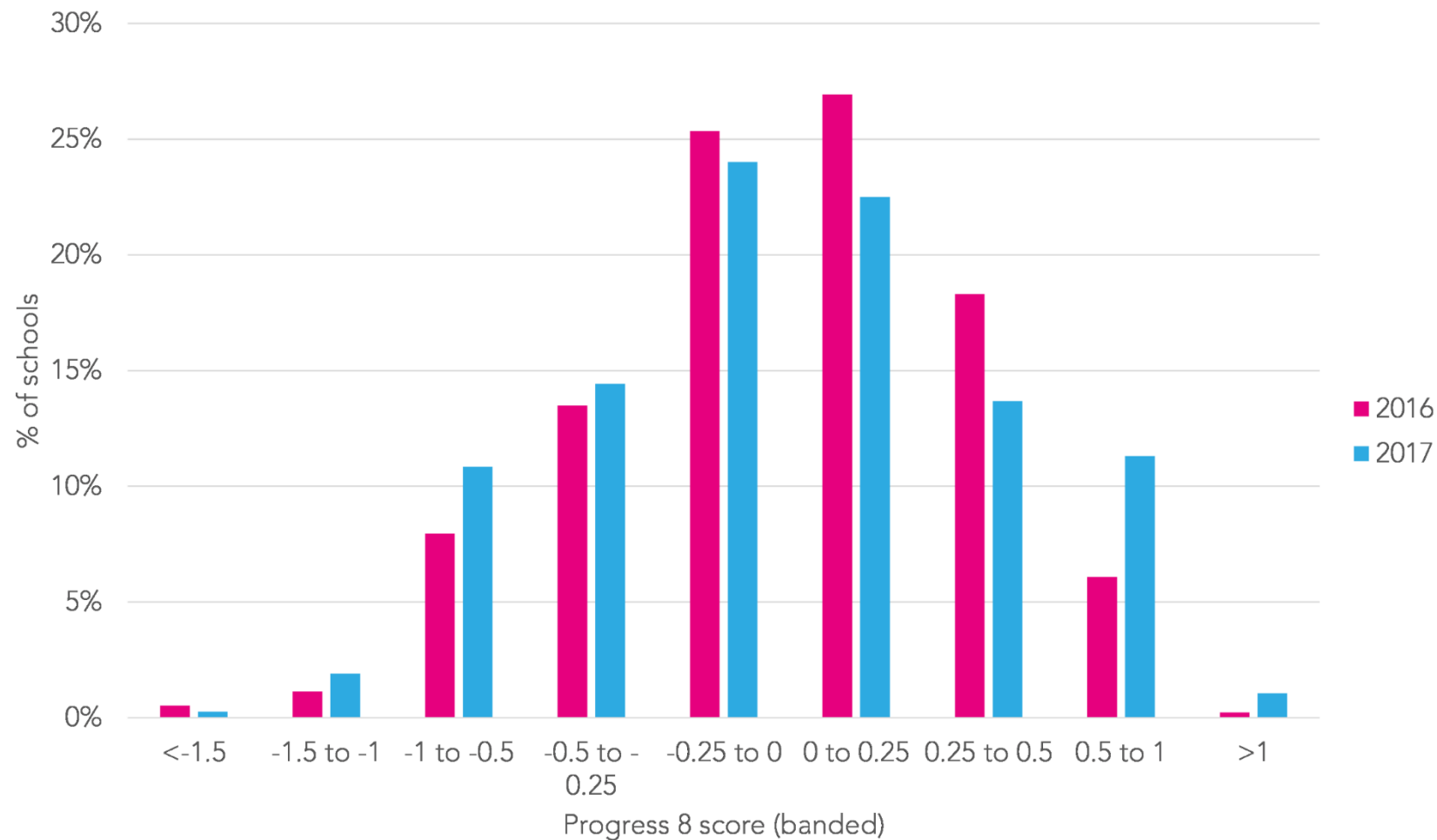
Interim points

Table A.1 New point score scales for legacy GCSEs (A*-G)¹⁶

GCSE grade	2016 Points	2017, 2018 and 2019 Points
A*	8.00	8.50
A	7.00	7.00
B	6.00	5.50
C	5.00	4.00
D	4.00	3.00
E	3.00	2.00
F	2.00	1.50
G	1.00	1.00

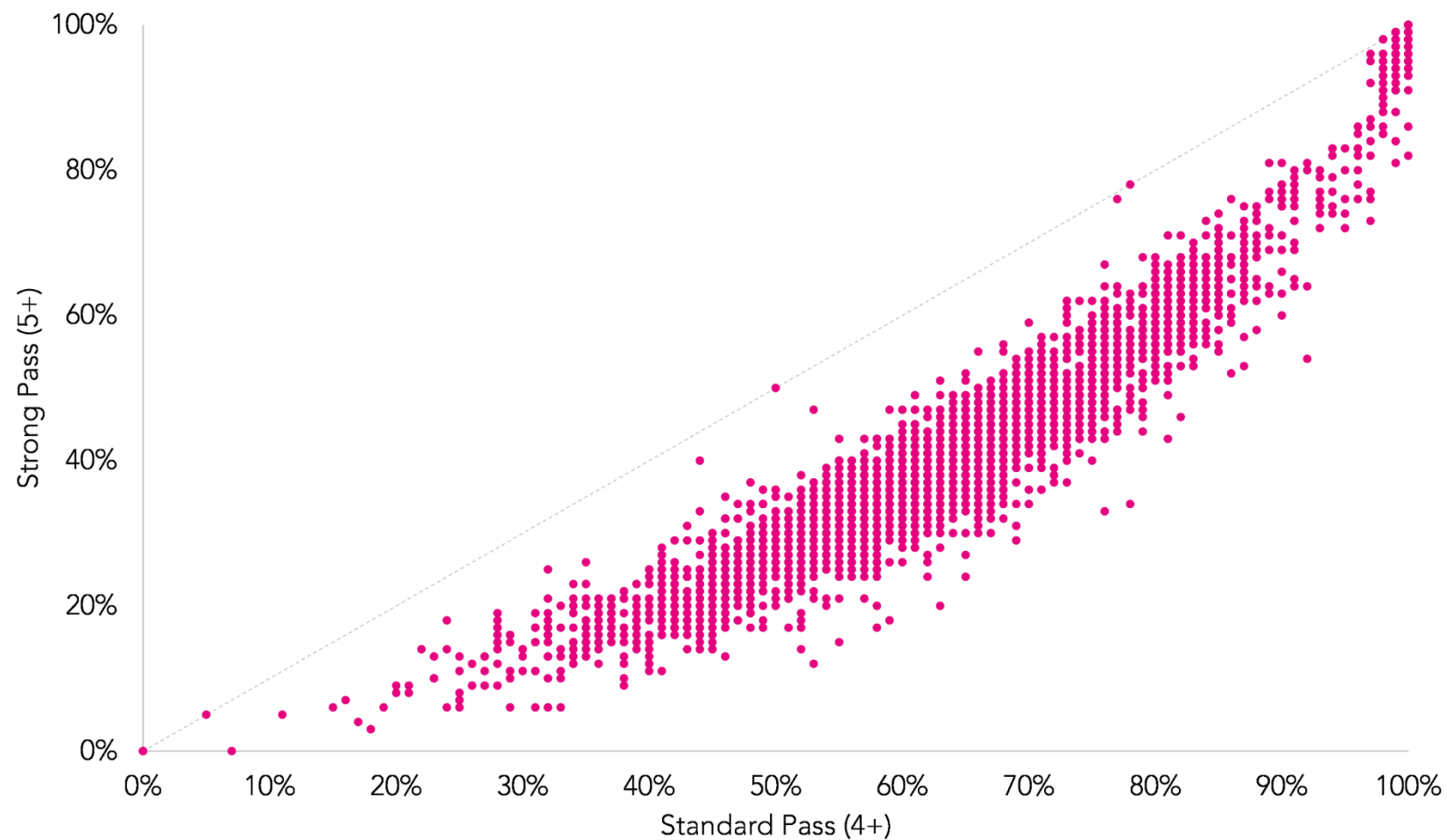
A8 and P8

Distribution of Progress 8 scores, 2016 and 2017
State-funded mainstream schools with at least 11 pupils



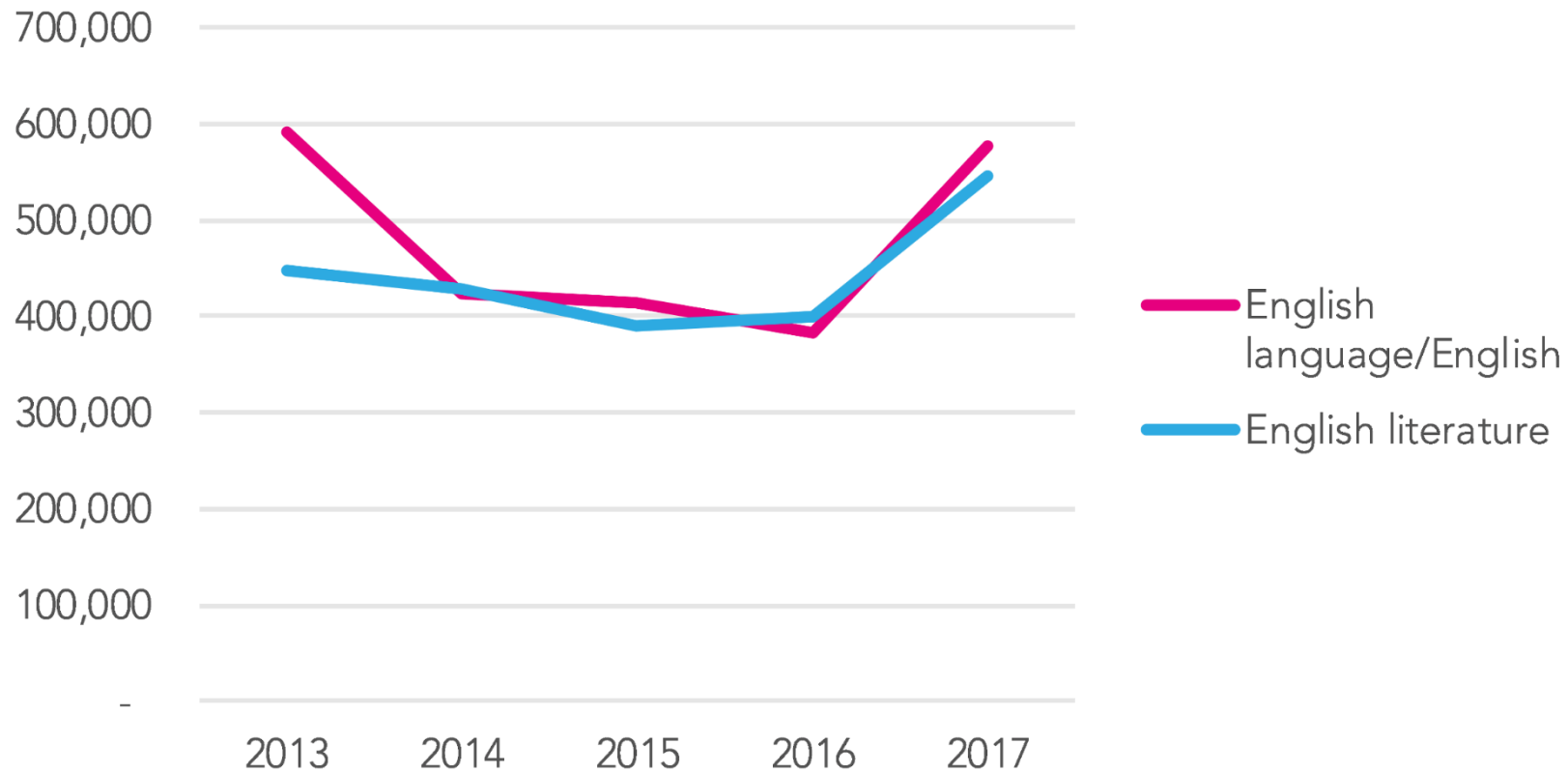
9-5 v 9-4

Percentage of pupils achieving standard and strong passes in GCSE English and maths



English language and English literature

Age 16 entries in English GCSEs
UK-wide



Future

- Two more years of interim points
- EBacc APS



KS5

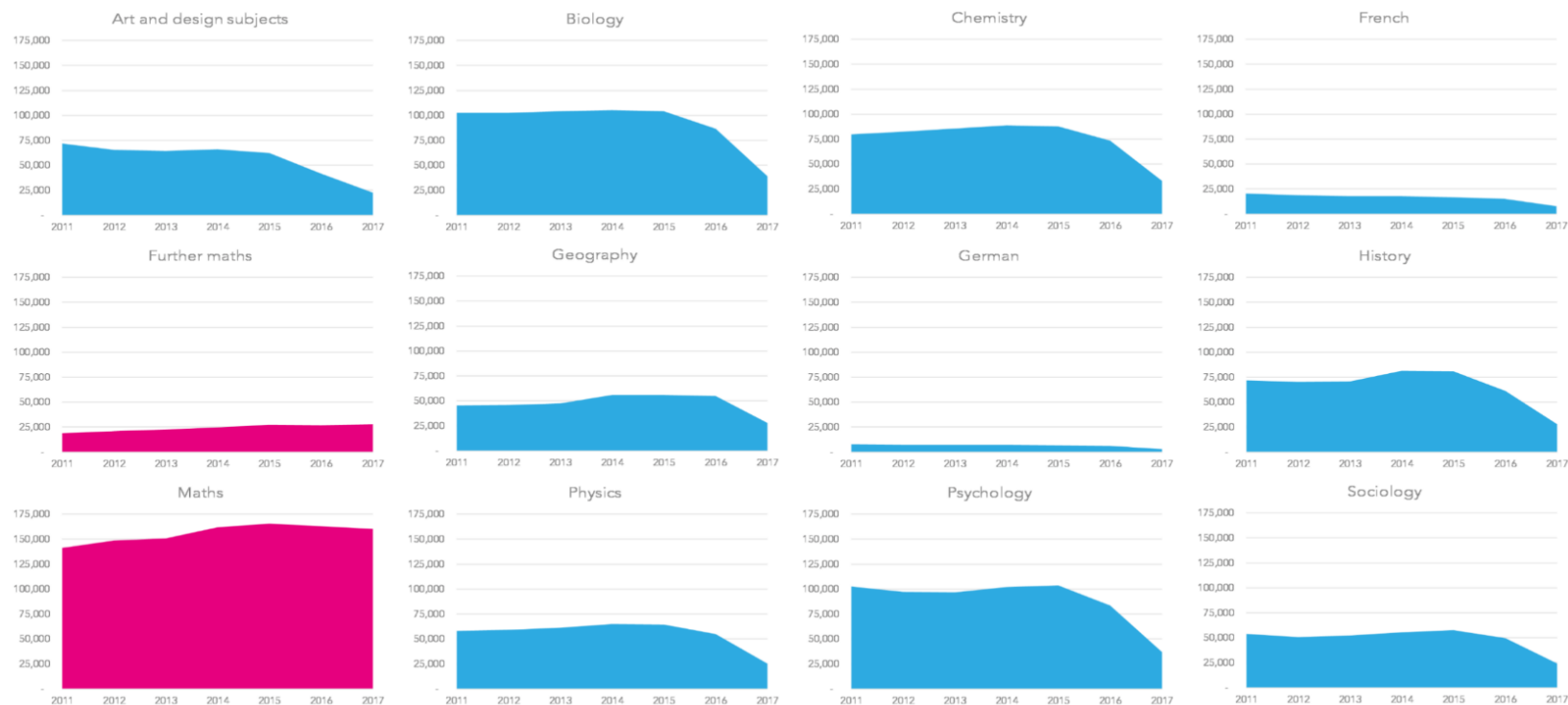
Overview

- Reformed A-Levels
 - timeline
 - first teaching in 2015: most facilitating subjects
 - first teaching in 2016: other big A-Levels
 - first teaching in 2017: smaller A-Levels + maths and further maths
 - first teaching in 2018: remaining ancient and modern foreign languages
- Changes to performance tables
 - qualifications dropping out of performance tables
 - change in how results are allocated to institutions

AS-Levels

AS-Level entries in selected subjects, 2011-2017

Subjects in blue have decoupled. Subjects in pink have yet to decouple



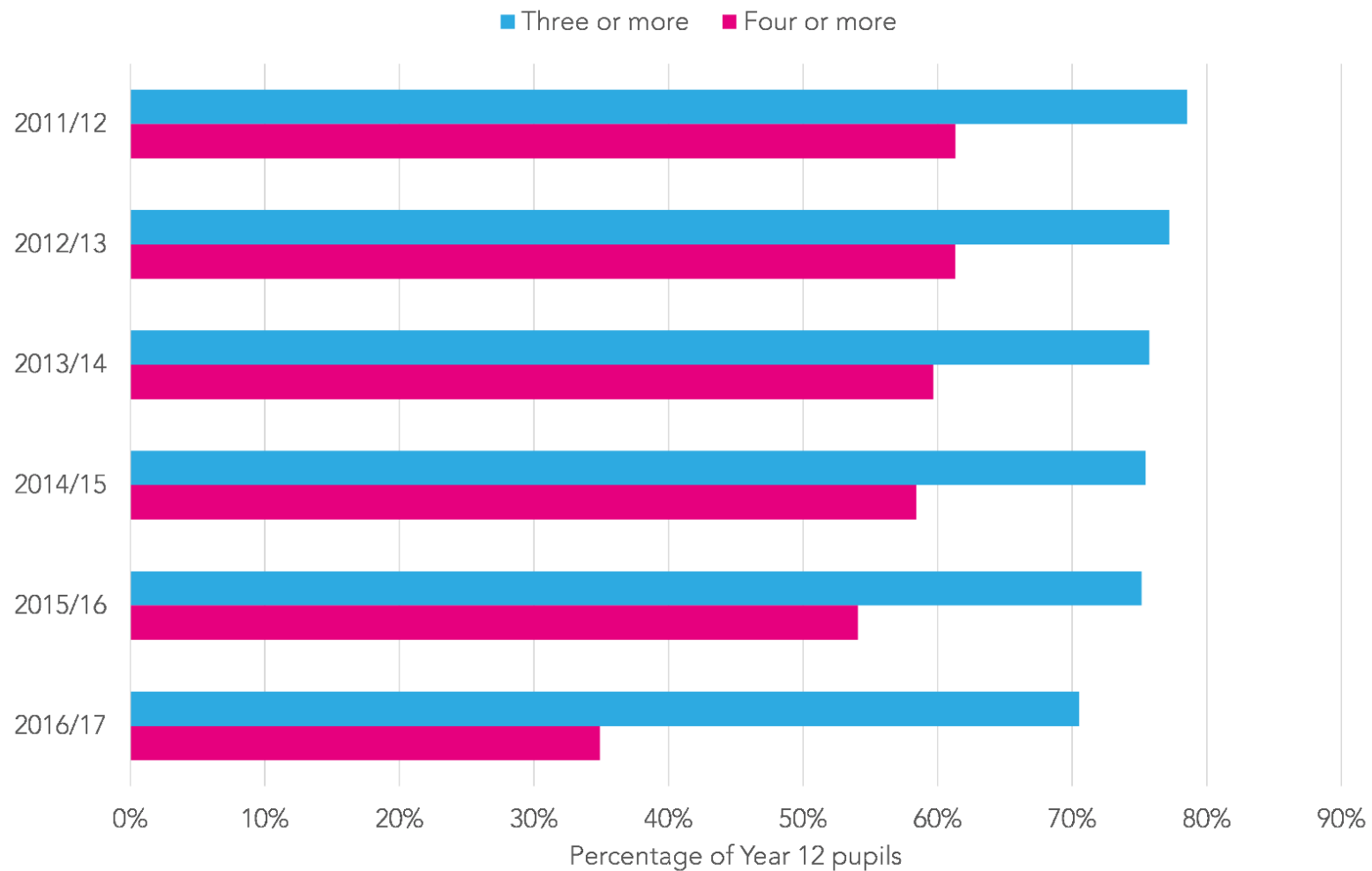
Notes

AS-Level entries in England, Wales and Northern Ireland. AS- and A-Levels have been decoupled in England only. Changes in pupil numbers contribute to the changes in entry numbers.

English language, English literature and English language and literature are not shown due to the non-availability of comparable data.

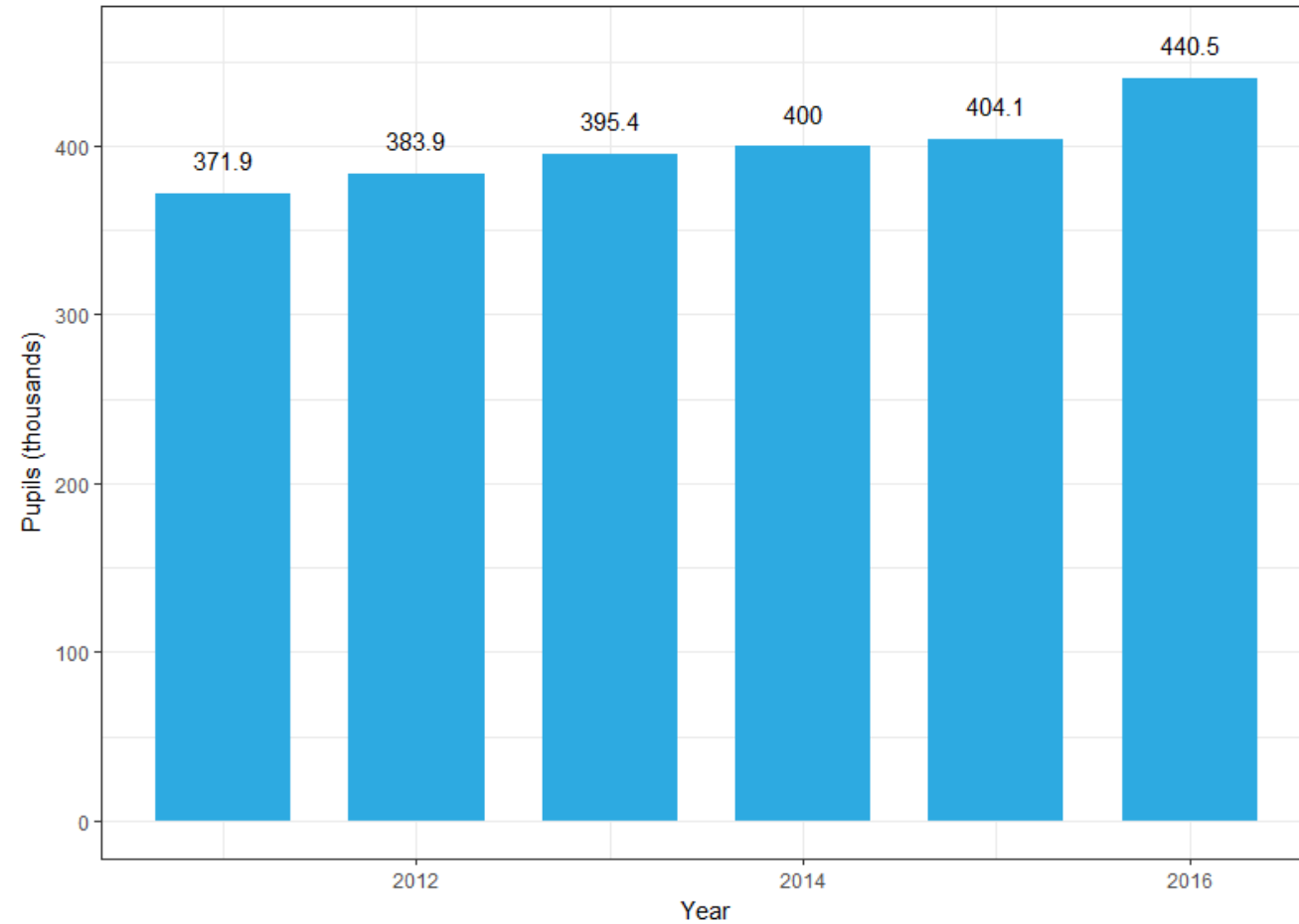
Source: Joint Council for Qualifications results releases 2011-2017

A-Levels



Other Level 3

Number of Level 3 Pupils, 2011-2016





Education Datalab
11 Tufton Street, London
SW1P 3QB

e:
educationdatalab@fft.org.uk
t: 0203 761 6959

Sign up for our newsletter at:
www.educationdatalab.org.uk

Follow us on Twitter:
[@edudatalab](https://twitter.com/edudatalab)