



Administrative Data  
Research Centre  
England

An ESRC Data  
Investment

# Analysing longitudinal data for looked after children in England

Lorraine Dearden  
Louise Mc Grath-Lone  
Katie Harron  
Bilal Nasim  
Ruth Gilbert

Better Knowledge

Better Society

# Children Looked After return

- Derived from an annual census of all local authorities
- Collated by the Department for Education since 1992
- Care records are linked over time via a child ID
- Data extract we analysed contained:

**complete care histories** for  
 $\frac{1}{3}$  of children  
born **1992 to 2011**  
who **entered care by 2012**



# Using CLA data for research

## ***Strengths***

- More than 20 years of data collected
- Longitudinal record of children's care history
- Lack of selection or recall bias
- Detailed information on episodes of care
- Linkage to other datasets is possible e.g. education



# Describing out-of-home care in England

- Number of children in care  
e.g. ever, at a single time point, during a period
- Type of care  
e.g. setting, legal status
- Duration of care  
e.g. length of first episode, total time, % of childhood
- Trajectories of care  
e.g. number of placement moves, destination, re-entry to care

How do these vary:

By age?

By gender?

By ethnicity?

Over time?

Between LAs?

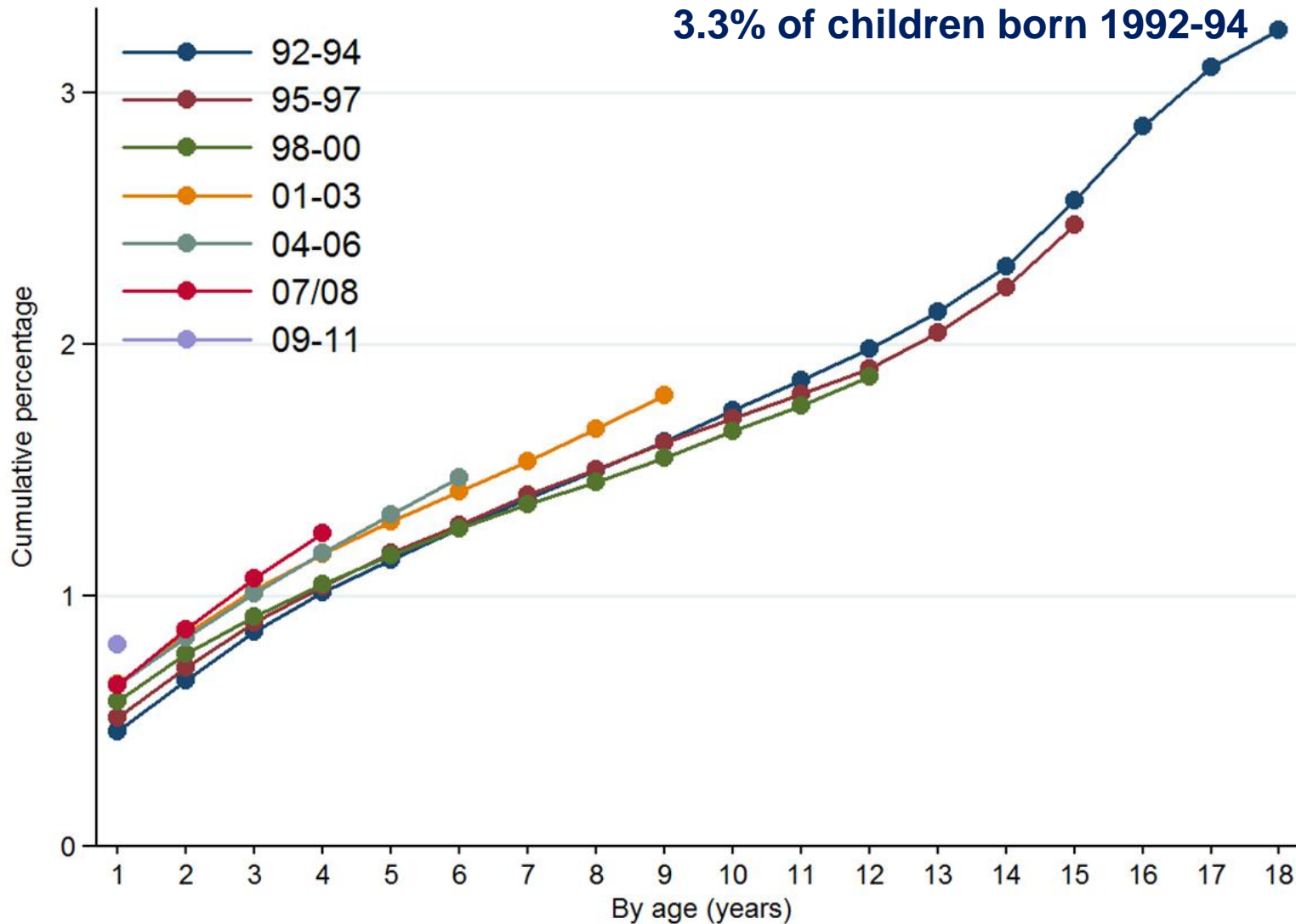


# Describing out-of-home care in England

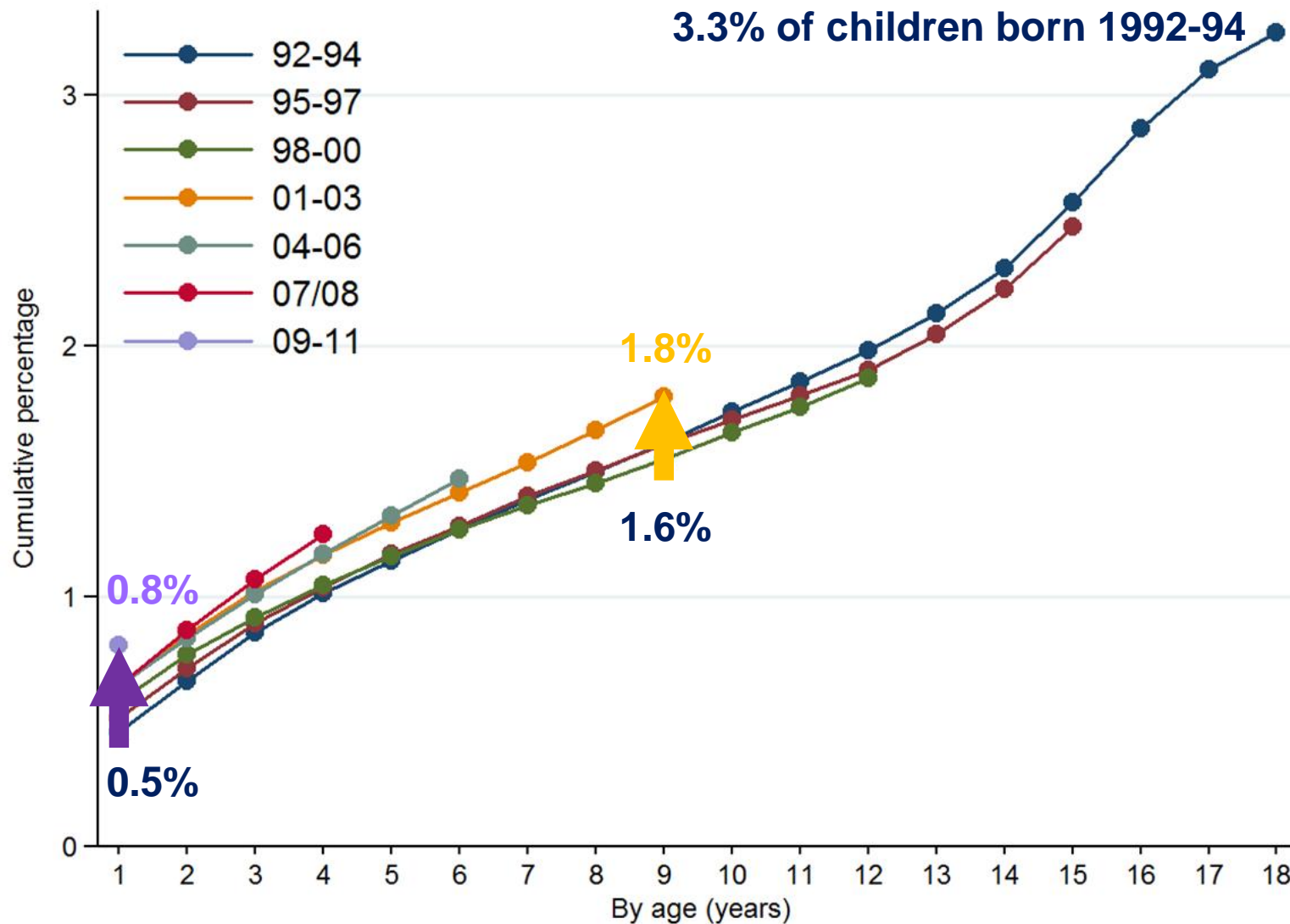
- Number of children in care  
e.g. ever, at a single time point, during a period
- Type of care  
e.g. setting, legal status
- Duration of care  
e.g. length of first episode, total time, % of childhood
- Trajectories of care  
e.g. number of placement moves, destination, re-entry to care



# 1 in 30 children in England enter OHC

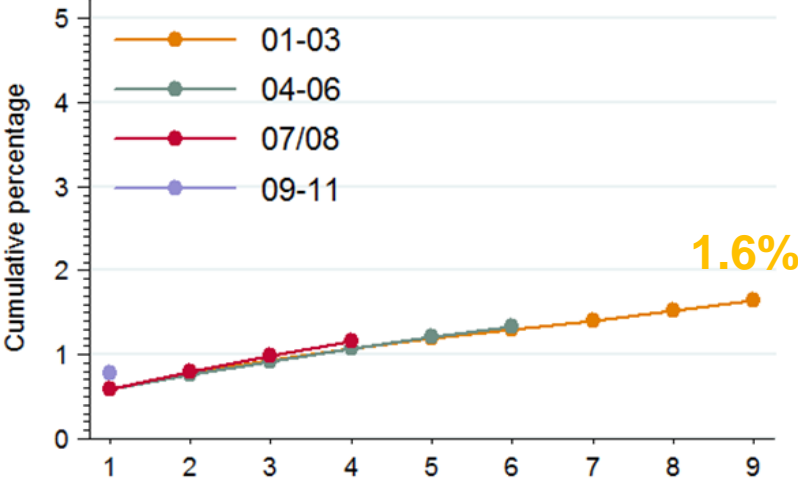


# Rates of entry to care are increasing

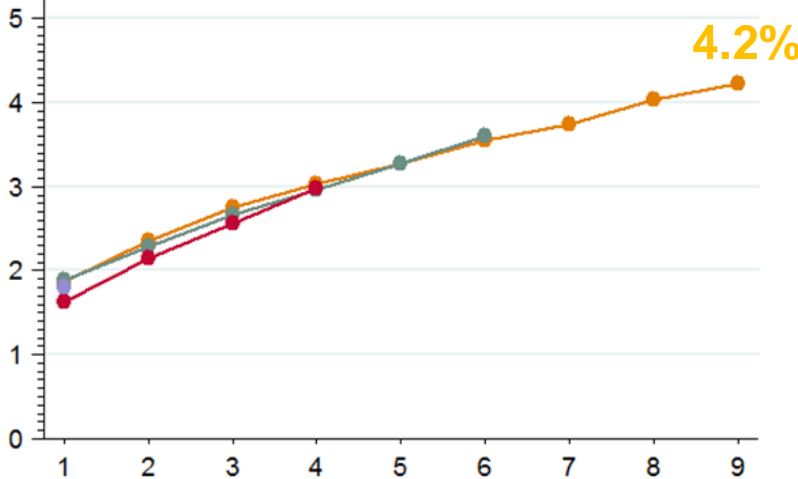


# Some ethnic minorities are more likely to enter care

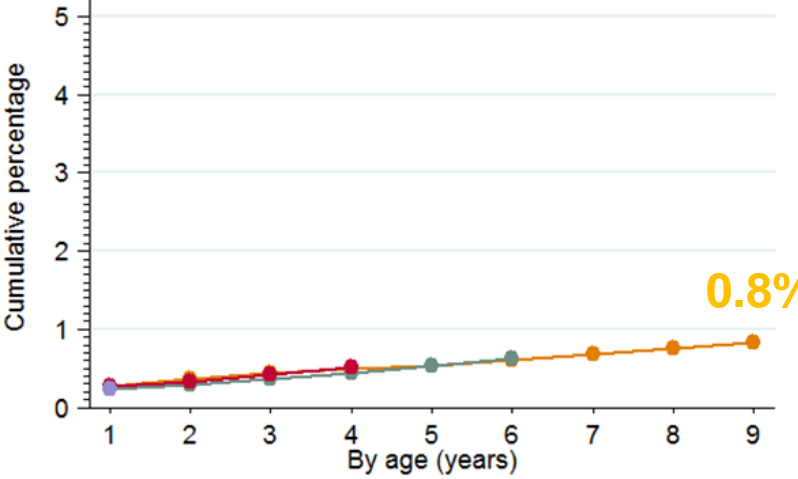
White



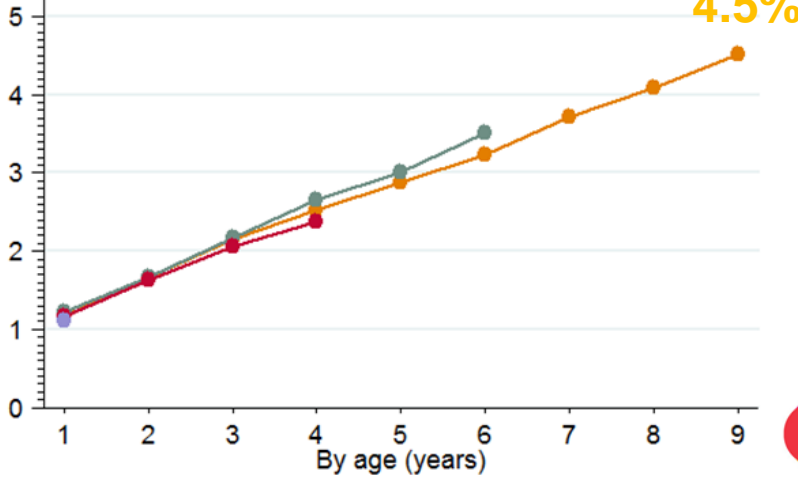
Mixed



Asian



Black





# Describing out-of-home care in England

- Number of children in care  
e.g. ever, at a single time point, during a period
- Type of care  
e.g. setting, legal status
- Duration of care  
e.g. length of first episode, total time, % of childhood
- Trajectories of care  
e.g. number of placement moves, destination, re-entry to care



# Children are placed in a variety of OHC settings



## Family setting

Foster care by:

- relatives
- family friends
- strangers



## Group setting

Children's home  
Mother & baby unit  
Residential school  
Supported living unit  
Health-related institution



## Other settings

Independent living  
Secure unit  
Young offenders' institute



# Most children are placed in family care

*First placement by year of birth and age at first entry*

	Born in 1992			Born in 2000			Born in 2008		
	<i>Family</i>	<i>Group</i>	<i>Other</i>	<i>Family</i>	<i>Group</i>	<i>Other</i>	<i>Family</i>	<i>Group</i>	<i>Other</i>
<1 year	90%	8%	2%	90%	10%	0%	91%	9%	0%
1 to 4 years	96%	2%	2%	98%	2%	0%	99%	1%	0%
5 to 10 years	91%	8%	1%	96%	4%	0%			
11 to 15 years	73%	23%	4%						
16+ years	30%	35%	35%						



# Children are more likely to be placed in family care

*First placement by year of birth and age at first entry*

	Born in 1992			Born in 2000			Born in 2008		
	Family	Group	Other	Family	Group	Other	Family	Group	Other
<1 year	90%	8%	2%	90%	10%	0%	91%	9%	0%
1 to 4 years	96%			98%			99%	1%	0%
5 to 10 years	91%	8%	1%	96%	4%	0%			
11 to 15 years	73%	23%	4%						
16+ years	30%	35%	35%						



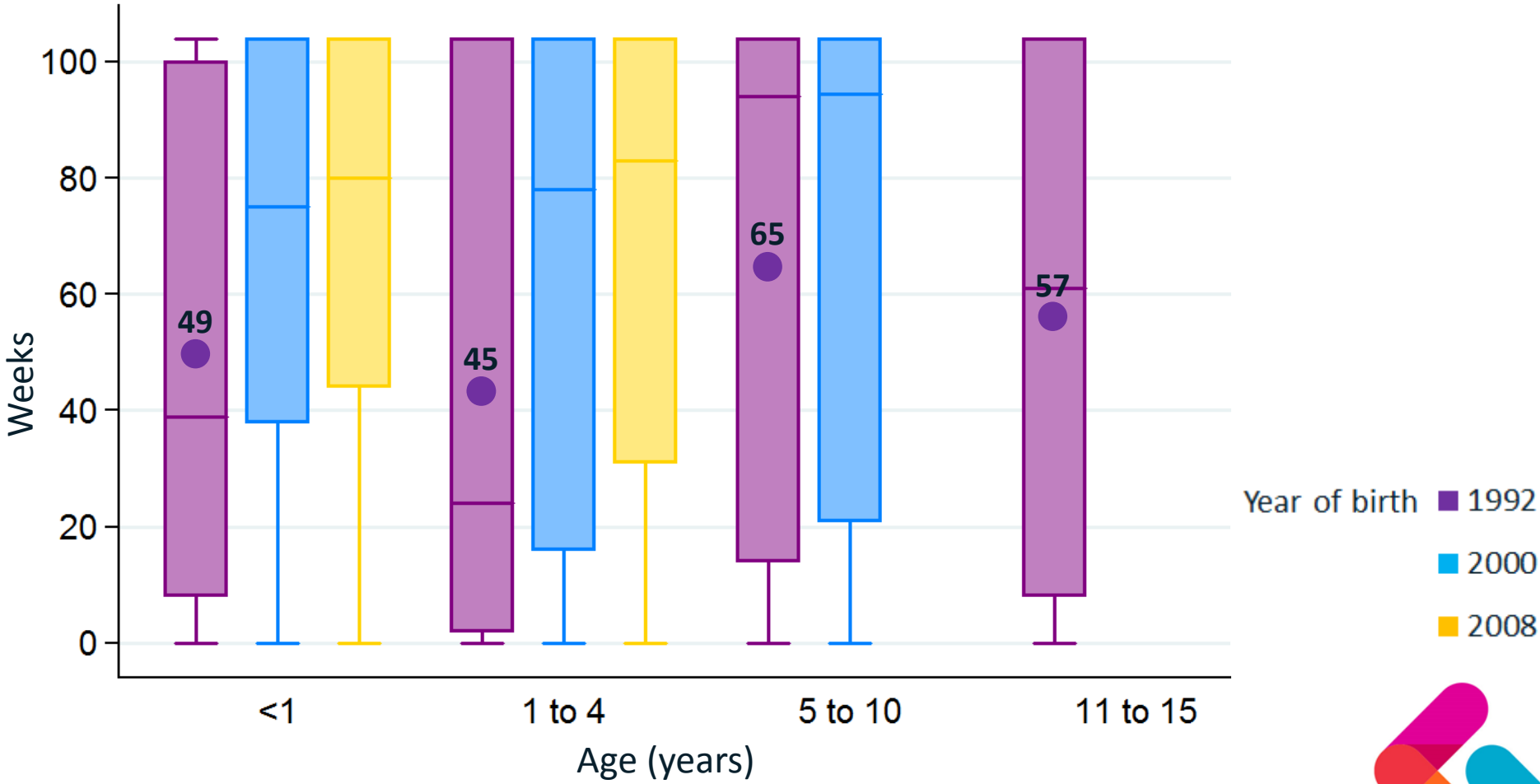
# Describing out-of-home care in England

- Number of children in care  
e.g. ever, at a single time point, during a period
- Type of care  
e.g. setting, support, access to services
- Duration of care  
e.g. length of first episode, total time, % of childhood
- Trajectories of care  
e.g. number of placement moves, destination, re-entry to care



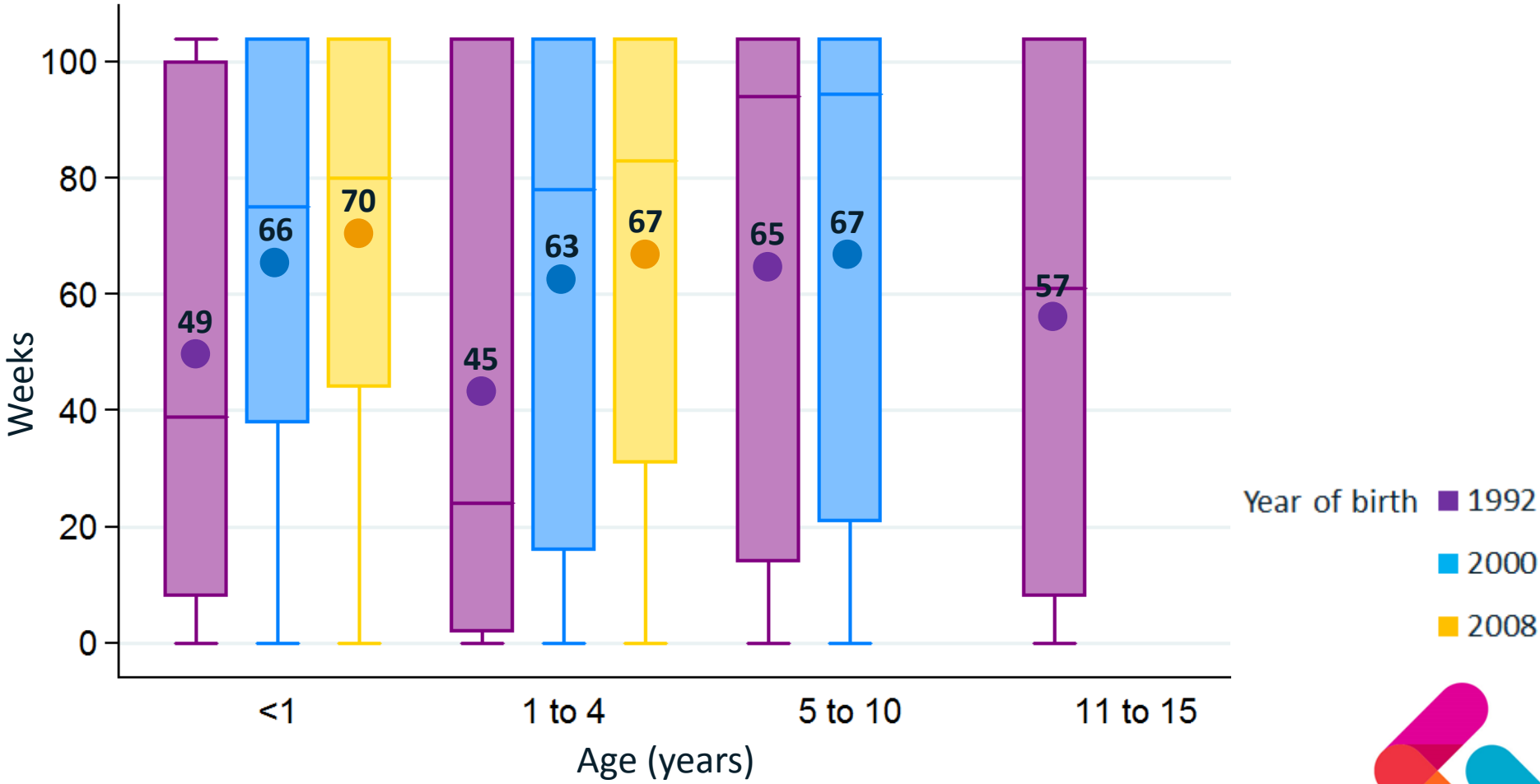
# Average time spent in care varies by age

Weeks in out-of-home care in the two years following first entry to care



# Average time spent in care is increasing

Weeks in out-of-home care in the two years following first entry to care



# Describing out-of-home care in England

- Number of children in care  
e.g. ever, at a single time point, during a period
- Type of care  
e.g. setting, support, access to services
- Duration of care  
e.g. length of first episode, total time, % of childhood
- Trajectories of care  
e.g. re-entry to care, number of placement moves, destination





# Modes of exit from out-of-home care in England

Return home

*No longer  
looked after*

Placed with  
parents

*Local authority  
retains role of  
corporate parent*

Adopted

*Transfer of all  
parental rights*

Special  
guardianship  
order

*Transfer of most  
parental rights*

Residence  
order

*Transfer of some  
parental rights*

Sentenced to  
custody

*Moves to YOI or  
prison*



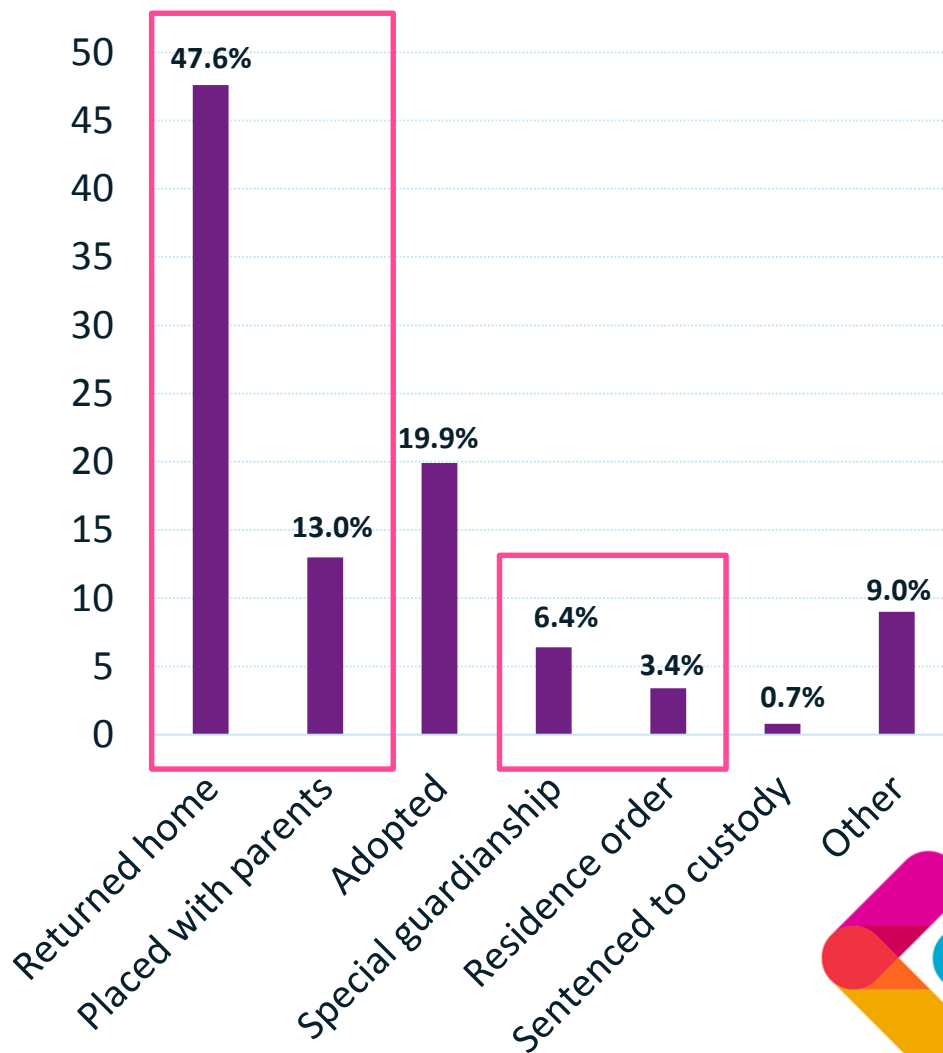
# Most children return home when exiting care

Overall 5,226 children aged <16 years exited out-of-home care in 2008

More than 60% returned home to their parents

Almost one in five children were adopted

Mode of exit from care in 2008 (%)



# Exclusions from re-entry analysis

When child is **adopted** they acquire a new legal identity.

- If they re-enter care, it will not be linked to their previous care history.

Children **sentenced to custody** cannot re-enter care until they have completed their sentence.

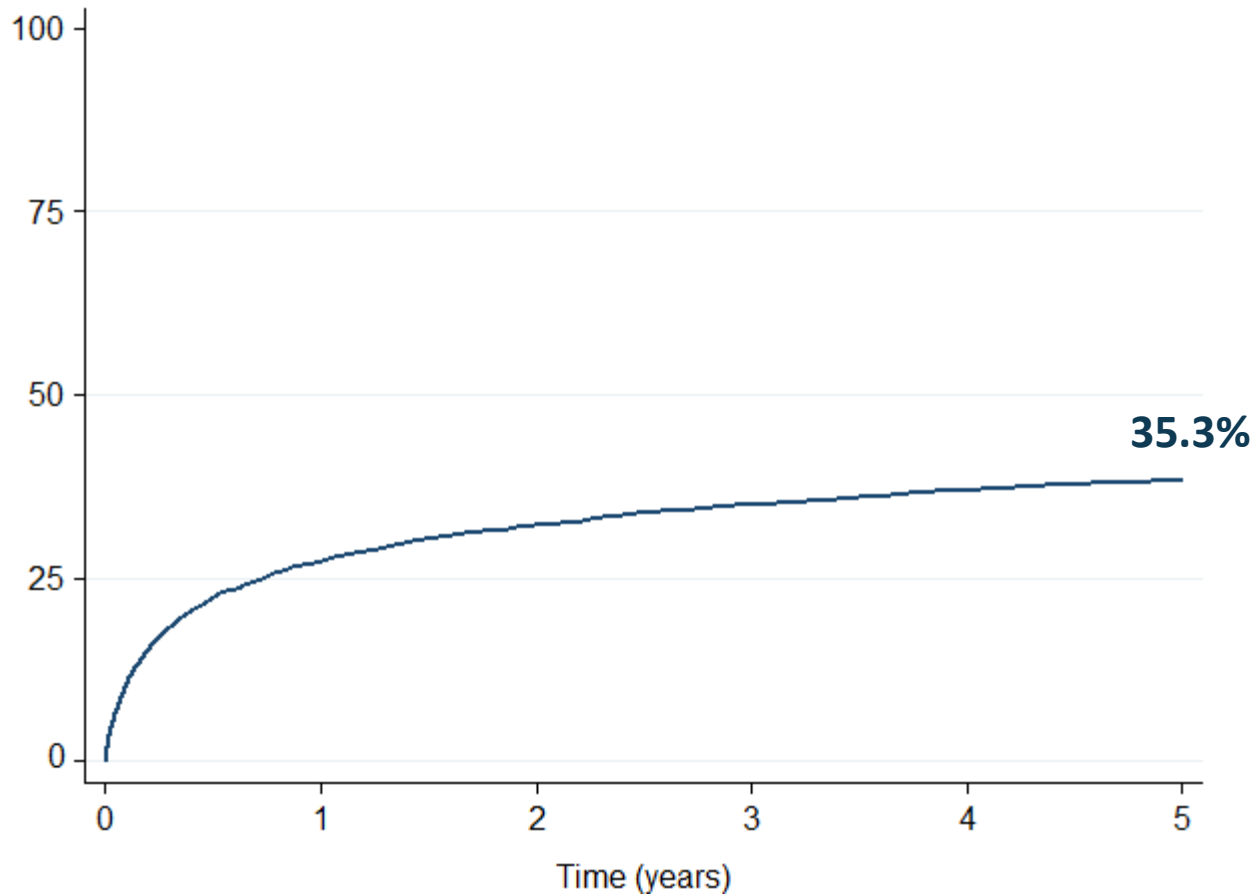
- This will affect re-entry timings.

 Re-entry can be explored for 4,076 children



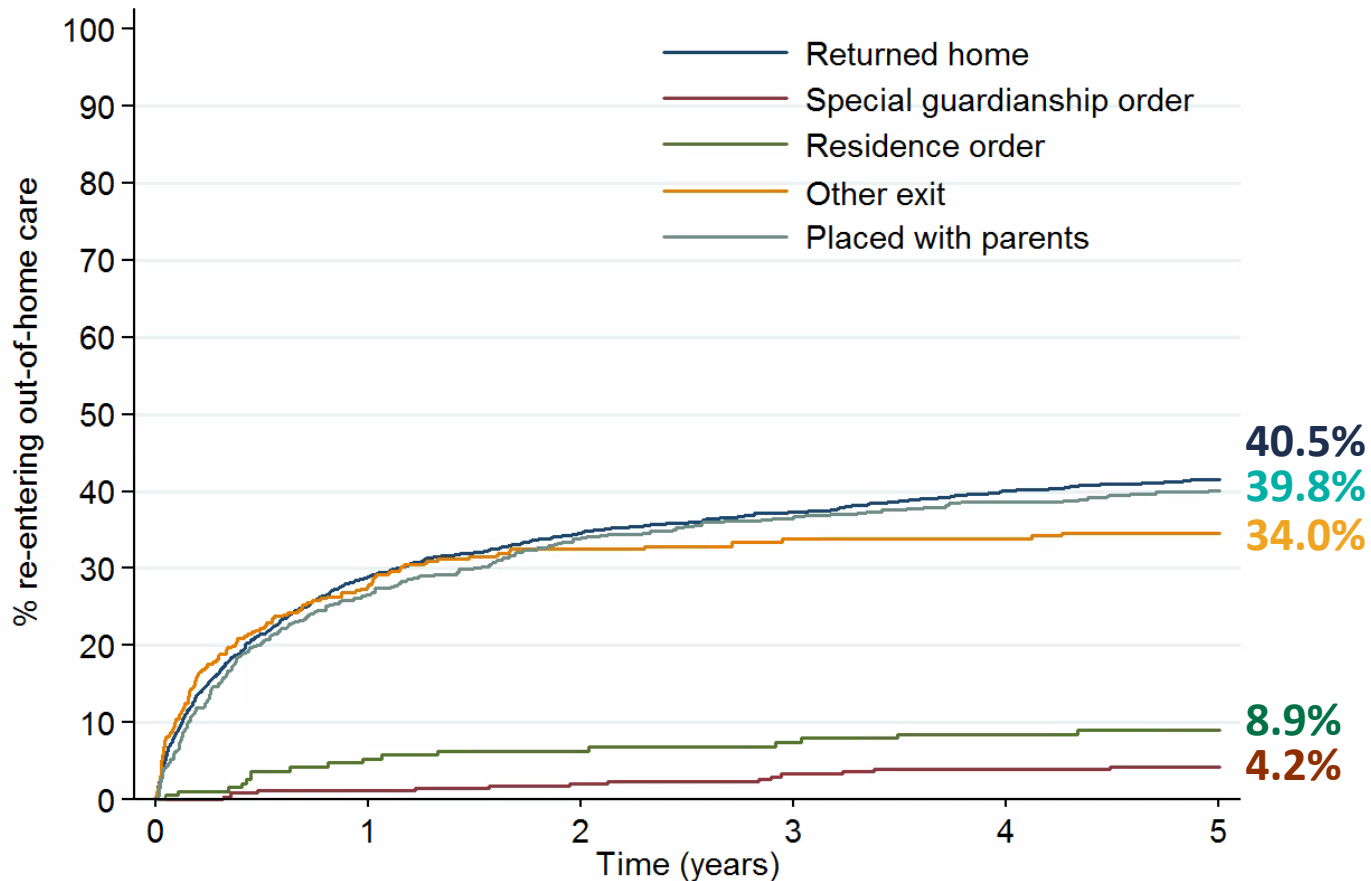
# More than one-third of children re-enter care

*Percentage of children exiting care in 2008 who re-entered within five years*



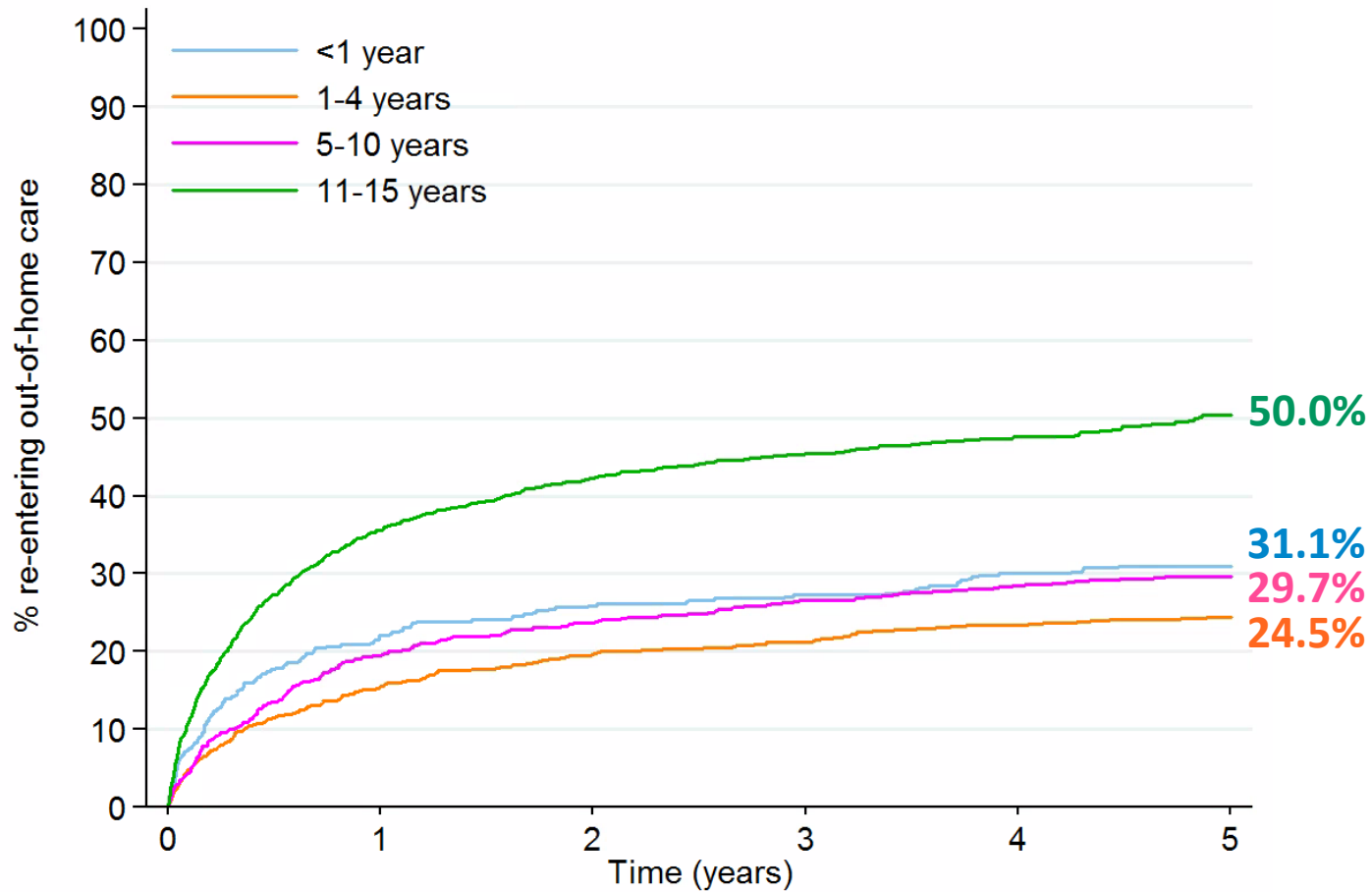
# Children who exit via a special guardianship order are least likely to re-enter

*Percentage of children re-entering care within five years, by mode of exit*



# Children aged 11-15 are most likely to re-enter

*Percentage of children re-entering care within five years, by age group*



# Effect of child characteristics

**Children aged 11 or older** have up to **50% higher** hazard of re-entering care compared to younger children.

**White or Mixed ethnicity** also have **50% higher** hazard of re-entry.

**Sex has no effect on re-entry.**

*Hazard ratio for child factors with constant proportional hazards*

Age group	HR	p-value
<1	(ref)	
1 to 4	0.98	0.64
5 to 10	0.89	0.30
11 to 15	1.49	<b>&lt;0.001</b>
<b>Ethnicity</b>		
White or Mixed	1.50	<b>&lt;0.001</b>
Black, Asian or Other	(ref)	
<b>Sex</b>		
Male	(ref)	
Female	0.99	0.81



# Effect of other care factors

	0 to 3 months	
	HR	p-value
In care due to family stress/dysfunction	1.48	<b>&lt;0.001</b>
In care due to child's disability	1.30	0.35
In care due to absent parenting	0.54	<b>0.03</b>
Previous exit from out-of-home care	1.44	<b>&lt;0.001</b>
Average placement is 3-9 months long	0.46	<b>&lt;0.001</b>
Average placement is >9 months long	0.34	<b>&lt;0.001</b>
1-4 placement changes overall	1.03	0.63
>5 placement changes overall	1.50	<b>&lt;0.001</b>
In care voluntarily (i.e. not court-mandated)	1.83	<b>&lt;0.001</b>





# What factors affect re-entry to care?

## More likely to re-enter care

A history of previous exits  
In care due to child's disability, family stress or dysfunction\*  
Placed with parents or "Other" mode of exit\*  
Aged >11 when exiting care  
White or Mixed ethnicity  
Short average placement length\*  
High number of placement changes\*  
Voluntarily in care

## Less likely to re-enter care

First exit from care  
In care due to absent parenting\*  
Returned home or exit under a legal order\*  
Aged <11 when exiting care  
White or Mixed ethnicity  
Long average placement length\*  
Low number of placement changes\*  
In court-mandated care

\* Time-varying effects



# Predicting re-entry to care

## More likely to re-enter care

A history of previous exits  
In care due to child's disability, family stress or dysfunction\*  
Placed with parents or "Other" mode of exit\*  
Aged >11 when exiting care  
White or Mixed ethnicity  
Short average placement length\*  
High number of placement changes\*  
Voluntarily in care

## Less likely to re-enter care

First exit from care  
In care due to absent parenting\*  
Returned home or exit under a legal order\*  
Aged <11 when exiting care  
White or Mixed ethnicity  
Long average placement length\*  
Low number of placement changes\*  
In court-mandated care

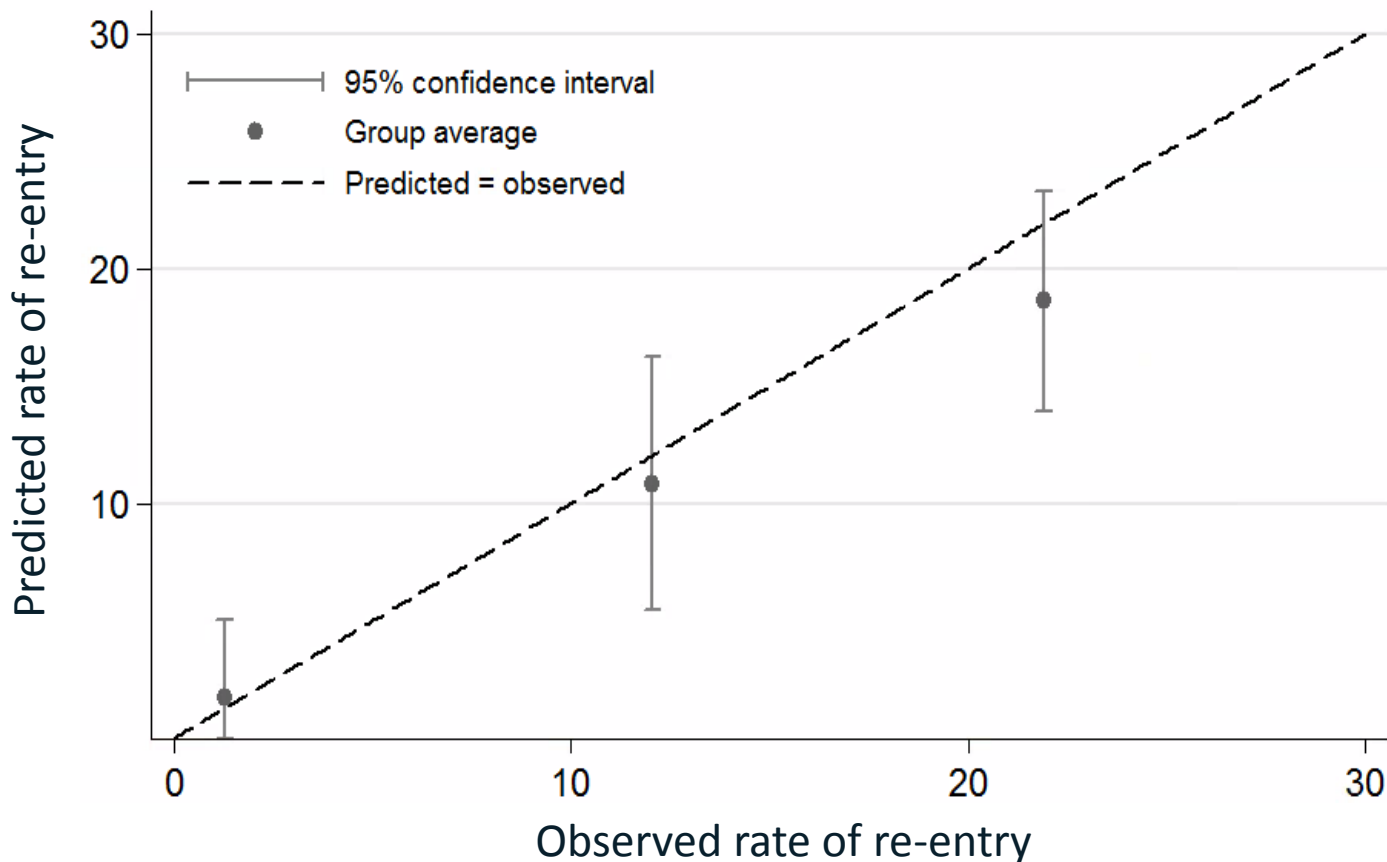
\* Time-varying effects

Absolute predicted risk  $\approx$   
baseline hazard +  $\sum(\text{baseline hazard} * \text{hazard ratio})$



# Calibrate predictive model

- Restricted to rapid re-entry within 3 months (time-varying hazards)
- Three risk groups: **low** (<5%), **medium** (5-15%) & **high** (>15%)
- Plot average predicted risk against average observed risk for each group



High-risk:  
Obs = 21.9%  
Pred = 18.6%

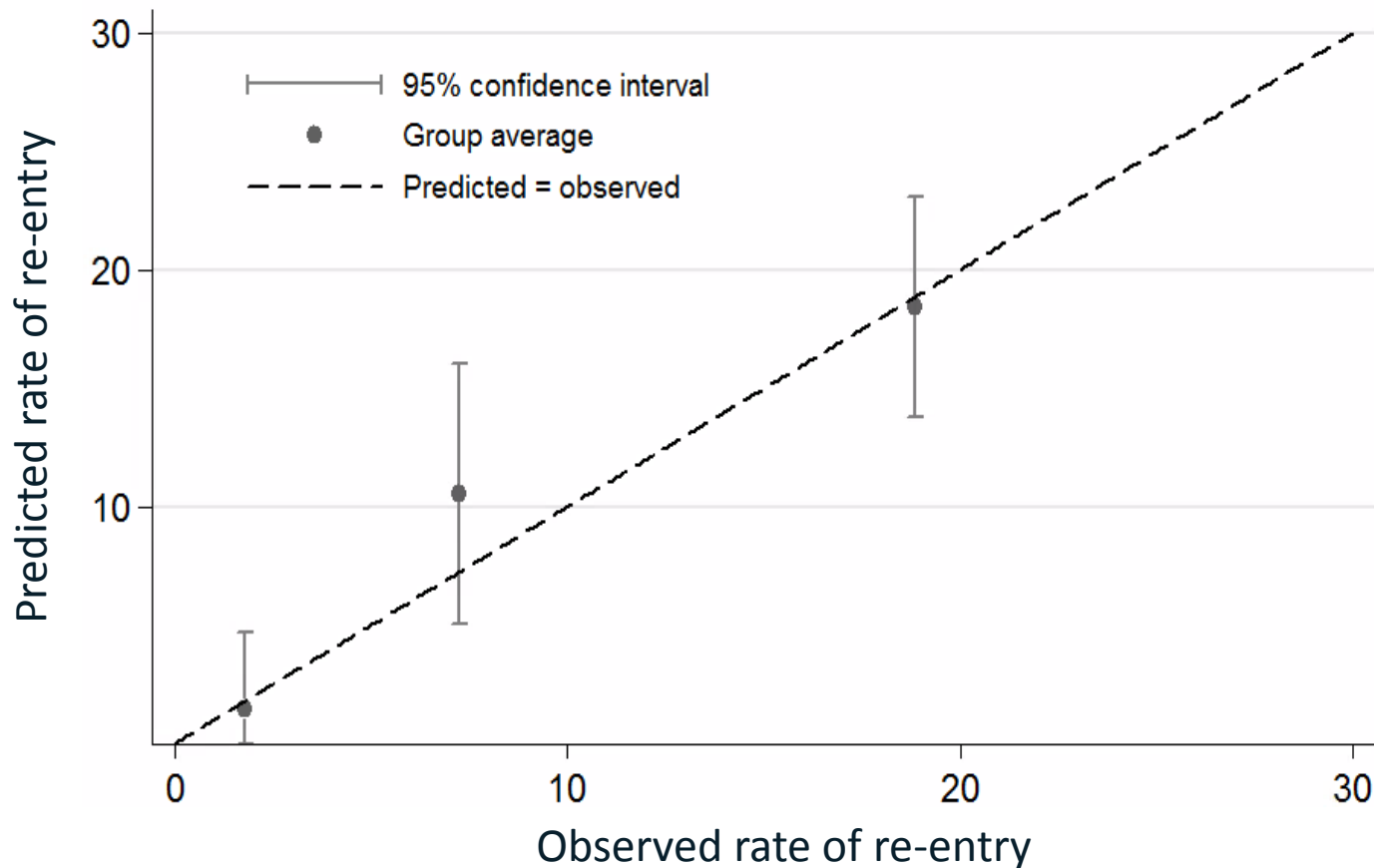
Medium-risk:  
Obs = 12.0%  
Pred = 10.9%

Low-risk:  
Obs = <1%  
Pred = <1%



# Validate predictive model

- Using external dataset of children who exited care in 2012 (N=4,650)
- Develop an online calculator based on validates predictive model



High-risk:  
Obs = 18.8%  
Pred = 18.4%

Medium-risk:  
Obs = 7.2%  
Pred = 10.5%

Low-risk:  
Obs = 1.7%  
Pred = 1.4%



How old is the child?	5-10 years
What is their ethnicity?	Black
Why is the child in care (i.e. what is their category of need)?	Abuse or neglect
Is this the first time the child is leaving care?	Yes, this is their first episode of care that is ending
How long has the child been in care (current episode only)?	3-6 months
Is the child in care voluntarily (i.e. Section 20 accommodation)?	Yes
How is the child leaving care?	They are being placed with their parents but will continue to be looked after

The predicted risk of re-entering care within three months for children in this group is:

10%

Risk group (low, medium or high)

Children with these risk factors are placed in the medium-risk group and are at higher risk of re-entry to care than other children.

The proportion of children re-entering care in the medium-risk group ranges from 5% to 15%. On average, 1 in 8 children re-enter care within 3 months.

Will be published online and freely available  
Contact [louise.mc-grath-lone.13@ucl.ac.uk](mailto:louise.mc-grath-lone.13@ucl.ac.uk) for details



# Acknowledgements

## PhD supervisors

Prof Ruth Gilbert

Prof Lorraine Dearden

Dr Katie Harron

Dr Bilal Nasim

Questions?

