

# INTERNATIONAL GUIDE 2025/26





## CONTACT US

University of Bristol  
Beacon House  
Queen's Road  
Bristol  
BS8 1QU, UK

Email: [support@international.bristol.ac.uk](mailto:support@international.bristol.ac.uk)  
Tel: +44 (0)117 205 2644  
WhatsApp: +44 738 561 7841

**9<sup>TH</sup>**  
in the UK  
(QS World University  
Rankings 2025)

**54<sup>TH</sup>**  
in the world  
(QS World University  
Rankings 2025)

**26**  
subjects highly ranked  
in the world's top 100  
(QS World Subject  
Rankings 2024)

**5<sup>TH</sup>**  
most targeted by  
top UK employers  
(High Fliers Research 2024)

**5<sup>TH</sup>**  
in the UK for research  
(*THE* analysis  
of REF 2021)

A member of the  
**RUSSELL  
GROUP**

# BRINGING LIFE TO LEARNING

<b>Contents</b>	<b>Page</b>
Welcome	2
Academic excellence	4
Inspired by research	5
The city of Bristol	6
A place of possibilities	8
Our Bristol neighbourhood	12
Your home from home	14
Our residences	16
Careers support	18
Supporting you	20
Societies and sport	22
Student Life	24
Fees and costs	26
Scholarships	27
How to apply	28
Courses and programmes	30
Undergraduate courses	32
Postgraduate taught programmes	38
Postgraduate research programmes	40
Our location	41



# WELCOME TO BRISTOL

**Founded in 1876, the University of Bristol has a global reputation for high-quality education and research.**

Bristol is one of the UK's most popular universities, with a diverse academic community. Over 30,000 undergraduates and postgraduates study here, with more than 10,000 international students from around the world.

As a research-intensive university, we aim to answer some of the world's big questions. Join us to work at the forefront of your subject, learn from expert staff, and get involved with our innovative research.

Bristol is committed to protecting the environment, and sustainability is part of everything we do. We were the first UK university to declare a climate emergency and aim to become carbon neutral by 2030.



As a Bristol student, you'll live and study in one of Europe's most vibrant, creative cities. Discover exciting opportunities, friendly people and historic architecture in beautiful, brilliant Bristol.

# 32%

of our students are international

We welcome students  
from more than

# 140

different countries



'The University has an outstanding academic reputation. Its commitment to research excellence and innovative teaching methods resonated with me. Word-of-mouth recommendations from current students and alumni affirmed Bristol's strong community and supportive environment.'

**Kevin, Ghana**

(MSc Health Economics and Health Policy Analysis)

# ACADEMIC EXCELLENCE

**With its outstanding academic environment and research-led teaching, Bristol is the place to reach your potential.**

## **Choice and flexibility**

We offer around 600 undergraduate and postgraduate degrees in a wide range of subjects. Many courses allow you to tailor your studies with flexible unit choices. We also run a foundation programme for international students.

## **A campus built around you**

Our city University has you in mind, with 24-hour libraries, state-of-the-art laboratories and specialist equipment. Our Security Services and University Police Officer help keep students safe around the campus.

Most buildings are based at our Clifton campus, a vibrant hub for all students to connect, study and relax.

# 13

Nobel Prize  
Winners

# 94%

of our research is rated 'world-leading' or 'internationally excellent' (REF 2021)



## **Investing in a new campus**

Across the city, we are developing a new campus with exceptional facilities for research, innovation and education. The Temple Quarter Enterprise Campus will be a dynamic space with an emphasis on group working, and students will learn from the real-world challenges of the community and external partners. Visit [bristol.ac.uk/temple-quarter-campus](http://bristol.ac.uk/temple-quarter-campus) for more information.

# INSPIRED BY RESEARCH

## Research-led teaching

As a member of the Russell Group and the Worldwide Universities Network, Bristol is one of the UK's leading research universities. This innovative research informs all our courses, so you'll learn from the latest discoveries.



## Using the classics to prevent online harm

Our socio-technical researchers are challenging attitudes towards cyber-security. By tracing the relationship between people and technology back to its roots in the classical world, they have illustrated how our past could hold the key to our cyber future by defining how technology, society and people could work together to keep us safe online.

## Our research impact

These are just a few of the latest research stories from Bristol's inspirational students and academics.

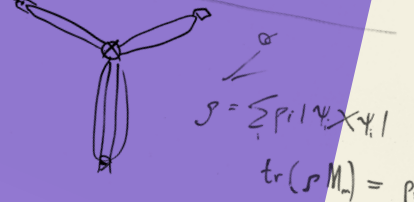


## Preventing disasters with climate modelling

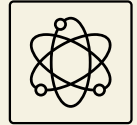
Responsible for the world's first high-resolution simulations of flooding, our research has made it possible to assess risk one metre at a time – at a continental or global scale for any region of the world. Humanitarian agencies are now able to prepare for disasters in a much more targeted way and lives are being saved.

## Pioneering plasters to heal children's hearts

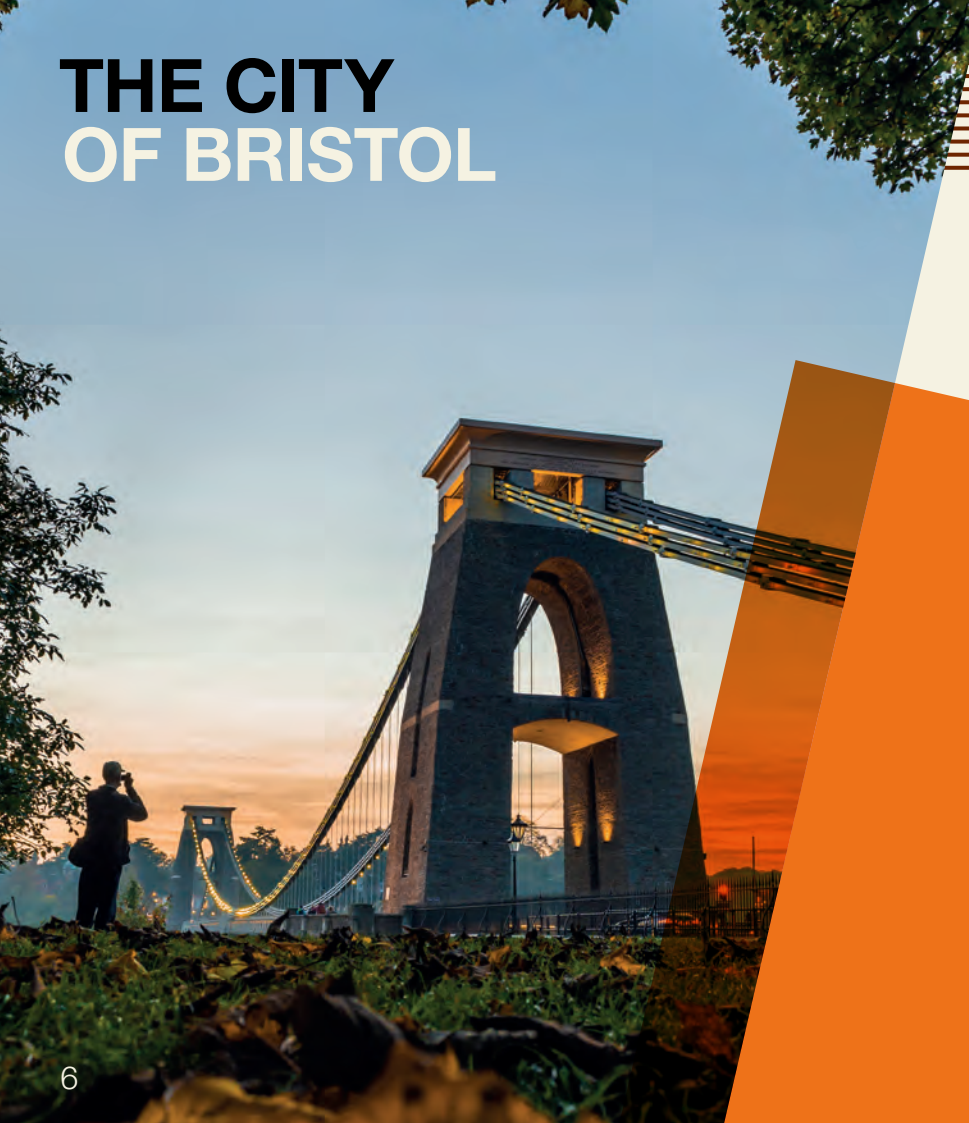
Congenital heart defects develop in the womb, impairing the heart's ability to pump blood effectively. Repeated surgeries are traumatic for children with these defects. Ground-breaking cell heart plasters offers hope, providing a regenerative solution that adapts and grows with the child's heart.



Find out more about our global research impact  
[bristol.ac.uk/research](http://bristol.ac.uk/research)

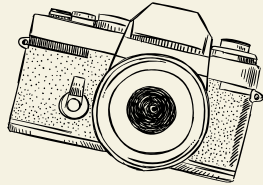


# THE CITY OF BRISTOL



‘Travelling to the UK wasn’t easy, but as soon as I arrived in Bristol everything changed. The warm welcome people gave me altered my perspective in a positive way. I have gained some incredible friends from the UK and across the world.’

**Paulina, Mexico**  
(BSc Biology)



Find out more about the city  
[bristol.ac.uk/city](https://bristol.ac.uk/city)



‘The city of Bristol helped me continue my creative journey with its museums, shows and street art.’

**Lalitha, Singapore**

(MSc Education: Neuroscience and Education)



'I like the fact that Bristol is a big city but has a charm. Everything can be done on foot, and there are many parks, cute streets and buildings. It's a dynamic city!'

**Lucas, France**  
(MSc Robotics)

# A PLACE OF POSSIBILITIES

# 400+

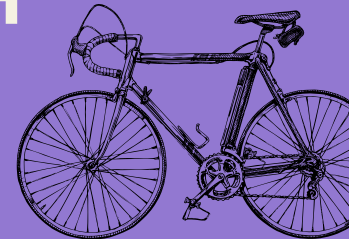
gardens, parks and nature reserves

# 185

countries represented in the city  
of Bristol's community

# 17<sup>TH</sup>

most sustainable  
university in the world  
(QS World University  
Rankings 2024)



### Explore our festival scene

Bristol's festivals are world famous. From music and comedy to food and drink, and even hot air balloons, there's always something to celebrate in Bristol.

Find out what's on  
[visitbristol.co.uk/whats-on/festivals](https://www.visitbristol.co.uk/whats-on/festivals)



## The city of Bristol is a creative, inspiring place where everyone is welcome. Located in south-west England, it's the UK's 8<sup>th</sup> largest city.\*

Bristol has all the vibrant energy of a big city, but its friendly, relaxed atmosphere will help you feel at home. Our campus is near the centre of Bristol, so you can enjoy everything the city has to offer.

### A welcoming community

We're proud of our multicultural community. The city is home to people from more than 185 countries, speaking 90 languages, with at least 45 religions.\*\* A huge range of restaurants, shops and markets offer delicious food from around the world. Plenty of vegetarian, vegan and halal options are available.

### Safety first

Bristol is a safe city, and has received the prestigious Purple Flag award for 13 years in a row. This means our city centre is a safe and welcoming place to enjoy a night out.

### Something for everyone

As a Bristol student, you can enjoy the best of British culture from day to night. Find exciting events, exhibitions and festivals. Visit eclectic venues to enjoy all kinds of music, theatre and film. Or experience historic sites and famous architecture.

It's easy to explore Bristol's different neighbourhoods by walking or cycling. Discover colourful graffiti, hidden spots and beautiful views around every corner. If you want to step out of the busy city, there are more than 400 gardens, parks and nature reserves all over town.



### A greener future

Bristol is a green city that shares our commitment to protecting the environment. It's a former European Green Capital and the UK's first cycling city, and aims to become carbon neutral by 2030.

\*Centre for Cities 2022

\*\*Bristol City Council 2023

# SEE AND DO



## SHOPPING

Go shopping for well-known brands at Cabot Circus, or browse our quirky streets like Stokes Croft for vintage clothing and handmade crafts.



## GREEN SPACES

Take a walk around one of Bristol's many iconic green spaces such as the Downs and Ashton Court – perfect for running, hiking and wildlife spotting.



## CREATIVE SCENE

Enjoy Bristol's creative scene with colourful street art, including famous Banksy pieces, and a range of inspiring galleries and exhibition spaces such as the Arnolfini and Spike Island.



## ARCHITECTURE

Discover the striking architecture Bristol has to offer, from the Wills Memorial Building at the heart of campus, to the iconic Clifton Suspension Bridge spanning the Avon Gorge.



### SOCIALISE

Spend time with friends at the harbourside, exploring the waterways lined with historic buildings and lively cafés and bars.



### FOOD AND DRINK

Explore Bristol's diverse food scene – whether you're after budget-friendly street food, a traditional British roast, dinner at an award-winning restaurant, or a cosy lunch with friends.



### SPORT

Be inspired by Bristol's active and involved community. Enjoy watching professional sports teams such as Bristol City football club and Bristol Bears rugby club at Ashton Gate stadium.



### MUSIC

Dive into Bristol's iconic music scene. Take in live performances from big names and up-and-coming artists at exciting venues such as Thekla or the Fleece.



< 2

7

12

11

6

1

8

9

< 13

5

4

10

3

# OUR BRISTOL NEIGHBOURHOOD

Explore Bristol with  
our virtual tour  
[bristol.ac.uk/virtual-tour](http://bristol.ac.uk/virtual-tour)



- 1 Clifton campus**  
Our main campus is home to study lounges, libraries, gardens, cafés, a sports centre and the Global Lounge. There's plenty of space to study, socialise or relax.  
🕒 15 minutes
- 2 Langford campus**  
*(not shown on map)*  
Bristol Veterinary School is 14 miles south of the city on its own countryside campus.  
🕒 10 minutes
- 3 Temple Quarter Enterprise Campus**  
*(not shown on map)*  
Work is underway on our ambitious new campus, which is part of one of Europe's biggest urban regeneration programmes.  
🕒 30 minutes
- 4 Wapping Wharf**  
Discover exciting restaurants and independent shops in this up-and-coming area.  
🕒 5 minutes
- 5 Harbourside**  
The harbourside is buzzing with restaurants and bars, an independent cinema, and weekly markets. Come here to relax by the water.  
🕒 15 minutes
- 6 Cabot Tower**  
Take in the view from the top of Cabot Tower or relax with friends in Brandon Hill park.  
🕒 10 minutes
- 7 Clifton Village**  
Clifton is a picturesque area full of Georgian and Regency architecture. Pick up a treat at one of the independent cafés, shops and delis, or visit the famous Clifton Suspension Bridge.  
🕒 15 minutes
- 8 Park Street**  
Browse the shops on Park Street during a study break. At the top is the Wills Memorial Building, home to our graduation ceremonies.  
🕒 5 minutes
- 9 Stokes Croft**  
*(not shown on map)*  
Explore the streets of Stokes Croft for colourful murals, good food and new music.  
🕒 15 minutes
- Our student accommodation**  
See **page 16** for more information about your accommodation options.
- 10 City centre residences**  
🕒 15 minutes
- 11 Clifton residences**  
🕒 15 minutes
- 12 Stoke Bishop residences**  
*(not shown on map)*  
🕒 40 minutes, or  
20 minute bus journey
- 13 Bedminster residence**  
*(not shown on map)*  
🕒 40 minutes
- Approximate walking times from the main Clifton campus.**



# YOUR HOME FROM HOME

As an international student, your first-year accommodation will be an important part of your experience. From University halls to private housing, our accommodation team will be on hand to support you to settle into UK life and feel part of the student community.

## Our accommodation guarantee

We guarantee to make you an offer of University accommodation, as long as you meet the criteria and deadline. Find out more on our website

[bristol.ac.uk/accommodation-guarantee](http://bristol.ac.uk/accommodation-guarantee)





### **A variety of residences**

Our University accommodation is grouped into four areas of the city: Stoke Bishop in the north, Clifton in the west, Bedminster in the south, and the city centre.

We offer a range of self-catered and catered accommodation. Self-catered residences have kitchen facilities so you can cook your own meals. Catered residences have dining halls that provide two meals a day. All rooms are furnished, with either an en suite or a shared bathroom and WiFi.

Find out more at [bristol.ac.uk/accommodation/about/residences](https://bristol.ac.uk/accommodation/about/residences)

### **Security and support**

Our University accommodation is a safe and supportive environment, where you can make new friends, experience new things, and feel part of our vibrant student community.

Each residence is linked to a Student Support Centre. The Residential Life team can provide expert help, support and advice 24 hours a day, seven days a week.

Each residence also has a Chief Resident and Senior Residents who live alongside students. They provide pastoral support and put events on throughout the year to support building inclusive communities.



### **Social life and sports**

Each residence has a social committee run by students, which organises a range of social events, fun activities and sporting leagues, for all abilities. Students living in University accommodation can also join free exercise classes in the B:Active Residences programme.

### **Accommodation costs**

The accommodation fee you pay depends on the type of room you have and the facilities in your residence such as common rooms, study spaces, sports facilities, or any other enhancement. Your accommodation fee includes electricity, gas and water bills, internet, a social fund contribution and basic contents insurance. Undergraduate students also receive a bus pass for our UniBus service.

Accommodation costs for the 2024/25 academic year can be found at [bristol.ac.uk/accommodation/about/costs](https://bristol.ac.uk/accommodation/about/costs)

# OUR RESIDENCES

We have a wide variety of residences around the city of Bristol.

## City centre residences

City centre residences are within close walking distance of the main campus. Students living here have easy access to a huge range of shops, cafés and restaurants. You're also near to Bristol's vibrant harbourside.

## Clifton Residences

These residences are mostly based in and around Clifton, a popular suburb of Bristol with traditional architecture, café culture and green spaces. Most Clifton accommodation is around 15 minutes' walk from the main campus.

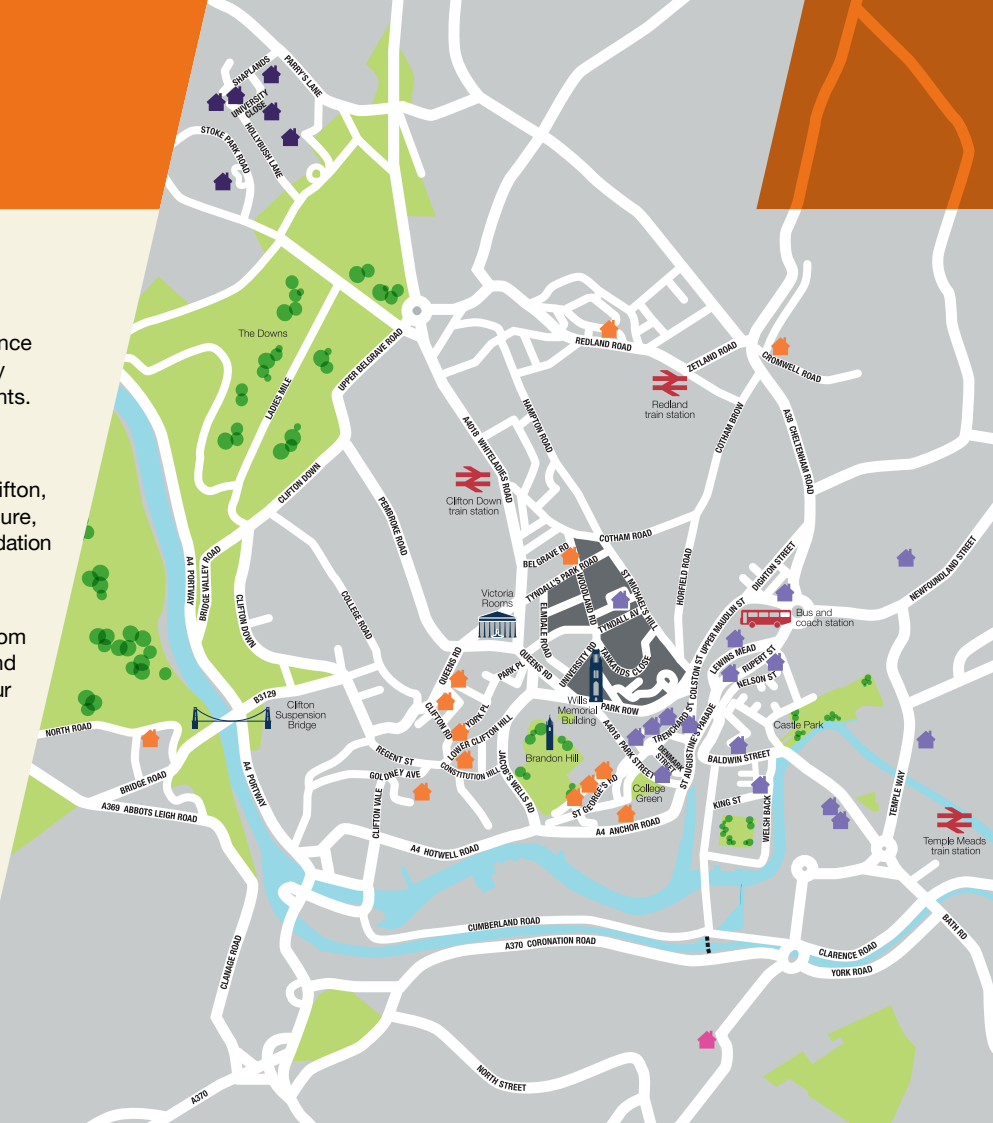
## Stoke Bishop residences

The Stoke Bishop area of Bristol is around 2 miles from the main campus. The site includes large gardens and space for socialising and relaxing. It houses most of our catered residences and is near the Coombe Dingle Sports Complex. A dedicated bus service links this area with the campus and city centre.

## Bedminster residence

Bedminster is in the south of the city and is a popular location for students, with its vibrant high street offering a wide range of bars and restaurants. It's just over 1.5 miles from the main campus.

## University of Bristol Clifton campus



Find the right accommodation for you  
[bristol.ac.uk/accommodation](https://bristol.ac.uk/accommodation)



## ACCOMMODATION COSTS

Accommodation type	Cost range*	Contract length
Undergraduate catered	£6,916 – £12,377	38 – 51 weeks
Undergraduate self-catered	£4,405 – £10,781	38 – 51 weeks
Postgraduate self-catered	£5,059 – £18,103	38 – 51 weeks

\*Information correct from June 2024; please visit [bristol.ac.uk/accommodation](https://bristol.ac.uk/accommodation) for most up-to-date information.



Clifton Hill House (Clifton)



Print Hall (city centre)



Wills Hall (Stoke Bishop)



Visit our Careers Service blog  
[bristol.ac.uk/careers-blog](https://bristol.ac.uk/careers-blog)



**12<sup>TH</sup>**  
in the UK for  
employment  
outcomes\*

**5<sup>TH</sup>**  
most targeted  
university by top  
UK employers\*\*

# CAREERS SUPPORT

**Our expert and impartial support will equip you to secure a fulfilling job, set up your own business or progress to further study.**

## **Excellent reputation**

University of Bristol graduates are highly regarded by employers in the UK and overseas, with 89% of Bristol overseas students in employment or further study 15 months after graduating†.

Many of our courses are accredited by professional bodies, societies and institutes, so your degree will be recognised around the globe.

## **An international Careers Service**

Our Careers Service is here to support you throughout your studies and for up to three years after graduation. We can help whether you plan to stay in the UK, return home, or work in a third country.

Our year-round programme includes alumni panels, networking opportunities, talks and workshops. You can learn about your visa options for working in the UK, or how to succeed in job markets around the world. We also provide advice and resources for résumé/CV writing, applications, interview preparation and starting your own business.

Over 250 employers engage with our students through presentations, workshops and events every year. Our online portal advertises job vacancies and paid internships.

## **Industry insight**

Many courses in business, management, engineering, law and health sciences offer professional mentoring schemes, with mentors from across the globe. You could also have the chance to study in industry during your degree.

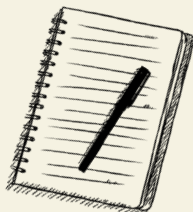
## **Enhance your degree**

Alongside your studies, you can work towards the optional Bristol PLUS Award, the University's employability award. This programme recognises your development through work experience, volunteering and extracurricular activities. The award is endorsed by a range of leading recruiters and is recorded on your degree transcript.

\* QS World University Rankings 2025

\*\* High Fliers Research 2024

† latest Graduate Outcomes survey, 2020/21



### Overseas experience

You can boost your career prospects by studying, working or volunteering abroad during your studies. Many undergraduate degrees allow you to spend a semester or a full year outside the UK. You could also take part in a shorter summer programme.

The Centre for Study Abroad team can help you find an opportunity that meets your goals. Visit [bristol.ac.uk/bristol-abroad](https://bristol.ac.uk/bristol-abroad) to explore your options.



'I founded Autism Independence to influence policies locally and nationally, ensuring the autism community has a voice.

Bristol allowed me to be very innovative in my research, using my dissertation to focus on the stages of my son's development. I couldn't be more pleased to grow as an individual, but also to be a voice for so many.'

**Nura, Somalia**

**Autism Independence charity founder**

(MSc Psychology of Education graduate)

### Become a future founder

Bristol actively encourages the innovators and entrepreneurs of the future. We can help you develop your entrepreneurial skills and pursue your start-up goals. The Basecamp Enterprise team provides guidance, workshops and support to help enhance your networks and build your growth mindset.

### Bristol for life: Your alumni connection

There are over 200,000 Bristol alumni living in over 190 countries around the world. When you join Bristol as a student, you can make the most of this incredible community, with access to alumni mentors working in your home country or your chosen career. When you graduate, your own alumni journey begins: from exclusive Bristol alumni events across the world, and opportunities to build your professional network, your Bristol alumni connection is for life. Visit [bristol.ac.uk/alumni](https://bristol.ac.uk/alumni) for more information.

Find out more about Nura's journey  
[bristol.ac.uk/nura-story](https://bristol.ac.uk/nura-story)



# SUPPORTING YOU

**We want you to make the most of your time at Bristol.  
Our student services are here to support all aspects  
of university life.**

## **Global Lounge**

The Global Lounge is a cultural hub at the heart of campus. It's a place for all students to connect, learn from each other and find out about global opportunities. Regular social events and activities celebrate different cultures and strengthen our diverse community. Find out what's on at [bristol.ac.uk/global-lounge](https://bristol.ac.uk/global-lounge)

## **A warm welcome**

Every September, our Global Lounge runs an exciting welcome programme focusing on international students. It's a great opportunity to meet other new students from both the UK and around the world, and to get your questions answered.

## **Academic support**

Most taught students will have a personal tutor. Your tutor will meet with you often, provide pastoral and academic support, and direct you to specialist services. Research students will receive similar support through their supervisor.

Our Study Skills service provides support to help you in your classes, with resources and sessions both in-person and online. Many degrees also offer subject-specific courses to develop your academic language and literacy. Try out our resources at [bristol.ac.uk/studyskills](https://bristol.ac.uk/studyskills)

## **Visas**

If you are not a British or Irish citizen, you will most likely need to apply for a visa to come to the UK to study.

Our dedicated Student Visas team can help you with your visa, both before you arrive and during your studies. They can also advise on the Graduate Route visa, which could allow you to stay in the UK for 2 or 3 years after your studies.

Our comprehensive webpages and friendly visa advisers can offer immigration information and professional, confidential advice. The latest guidance is available at [bristol.ac.uk/visas](https://bristol.ac.uk/visas)



‘The support I’ve received has been invaluable. From teaching adjustments to alternative exam arrangements, it has allowed me to work at my best and proactively approach circumstances that may have hindered my academic performance.’

**Weiru, China**  
(MSci Physiological Sciences)



### Healthcare

Most international students can access medical care through the National Health Service (NHS). The University has a full NHS doctors’ practice, and there are other doctors’ practices across Bristol. For more information, visit [bristol.ac.uk/students-health/international-students](https://bristol.ac.uk/students-health/international-students)

### Wellbeing support

If you need help with your wellbeing, we will help you find the support you need. All our support services are free and confidential. Find out more at [bristol.ac.uk/wellbeing](https://bristol.ac.uk/wellbeing)

### Disability Services and mental health support

Our Disability Services team provides information and advice on support available at the University. The team supports students who are disabled or neurodiverse with diagnoses such as specific learning difficulties, ADHD, autism, mental health difficulties and physical or sensory impairments. If you have any of these, we encourage you to let us know before you arrive. This is so that we can help you find information about the support available and how to access it. Find out more at [bristol.ac.uk/disability-services](https://bristol.ac.uk/disability-services)

### Religion, faith and spirituality

The Multifaith Chaplaincy is a welcoming space for students of all faiths and no faith. It offers pastoral and spiritual support, religious information and advice, and regular events. See [bristol.ac.uk/chaplaincy](https://bristol.ac.uk/chaplaincy)

### Support if you have children

We have a subsidised day nursery on the main campus, open during weekdays throughout the year. The nursery can accommodate children from three months to five years old. Visit [bristol.ac.uk/nursery](https://bristol.ac.uk/nursery)



### University Mental Health Charter Award

In 2022, Bristol became one of the first universities to receive this award, recognising our approach to improving mental health and wellbeing across the whole community.



Explore Bristol SU at  
[bristolsu.org.uk](http://bristolsu.org.uk)

# SOCIETIES AND SPORT

**With more than 350 student groups for all interests, everyone can belong at Bristol.**

## **Led by students, for students**

Every student is a member of Bristol Students' Union. Bristol SU is led by student representatives elected by you, including an International Students' Officer, who campaign, advocate and ensure students remain at the heart of everything the University does. Bristol SU also offers confidential academic advice and places to socialise and relax on campus.

## **Pursue your passions**

Bristol SU supports hundreds of student-run, interest-based clubs and societies. We've got everything from photography to baking and gardening to skydiving. There are more than 50 country-specific and religious societies – a great way to share your culture and feel closer to home.

Find your student group at  
[bristolsu.org.uk/groups](http://bristolsu.org.uk/groups)





‘Societies have allowed me to find my own community. They have given me the chance to take on leadership roles, develop important skills, be more active in the University and meet new people.’

**Renuk, Sri Lanka**  
(BSc Economics and Mathematics)



### Student events and activities

Bristol SU runs events throughout the year, starting from Welcome Week, for you to find friends and build your community. Karaoke, craft workshops, and trips to other UK sites and cities are just some of what you can look forward to.

### Volunteering

Volunteering is a great way to build confidence, develop your skills and make a positive impact in the community. It's easy to get involved and there's a huge range of opportunities, whether you want to commit your time regularly or take part in a one-off volunteering day. Choose a student-led project or work with charities and community groups across the city and beyond.

To find out more, visit  
[bristolsu.org.uk/volunteering](http://bristolsu.org.uk/volunteering)

### Sport, exercise and health

Bristol's excellent sport and fitness facilities can help you stay active and healthy. Facilities on campus include a two-floor gym, fitness class studios, double-sided sports hall and a 25-metre competition-length swimming pool. Just on the edge of the city, our Coombe Dingle Sports Complex features a large indoor tennis centre as well as outdoor courts and pitches for tennis, netball, lacrosse, hockey, rugby, football and more.

You can play sport socially or competitively, either by trying one of our free student-only B:Active sessions, or by joining one of 70 sports clubs supported by Bristol SU. Student athletes who play sport professionally can continue to develop alongside their studies with the support of our extensive performance programme.

For more information, visit [bristol.ac.uk/sport](http://bristol.ac.uk/sport)

# STUDENT LIFE



At the University of Bristol, student life goes beyond the lecture hall. It's an exciting experience that blends academic excellence with a vibrant cultural and social scene. Hear from some of our international students about why they love life in Bristol.



'Bristol is such a diverse and colourful city. There is always something going on – there is always a buzz! University staff have been so supportive and have really made my time at Bristol special. They go the extra mile to make sure I'm learning at my best and feel supported, especially being so far from home. I will always look back fondly on the memories I've made here.'

**Natasha, Canada**

(BVSc Veterinary Science: Accelerated Graduate Entry)



'Bristol's reputation as a delightful city to live in, with its rich history and vibrant culture, has made it an ideal environment for both my academic and personal growth. The lively city provides a thriving local community and numerous industry connections. Don't forget to check out the societies and activities that can make your student experience even more rewarding.'

**Yunyi, China**

(MSc by Research Population Health Sciences)



Find out why our international students love Bristol  
[bristol.ac.uk/lovebristol-video](https://bristol.ac.uk/lovebristol-video)



'I chose to study at the University of Bristol because of the vibrant, dynamic student experience and campus life. It's a culturally rich city with a thriving arts scene, music festivals, and numerous social and recreational opportunities. The stimulating academic environment and exciting city life will make your university experience truly memorable.'

**Satiul, Indonesia**

(MA Comparative Literatures and Cultures)



'Bristol is like a home away from home. What makes it special is that the people here are very warm-hearted. I still remember my first day: we asked a cab driver for directions, and he offered us a free ride and a tour of the city. I was so touched and this made a lasting impression on me. Since then, I've only met kinder people.'

**Khushi, India**

(MSc Finance and Investment)



'Bristol has a vibe like no other. It has a sense of calmness and peace about it – neither too busy nor too quiet. The different cultures in the city add more character and make it a very diverse place. Every day in Bristol brings me joy, whether I am at the University working on my studies, sitting by the harbourside eating ice cream, or enjoying the view of the breathtaking Clifton Suspension Bridge. Bristol has a soul that will be with you forever!'

**Gaurav, India**

(PhD Electrical and Electronic Engineering)



# FEES AND COSTS

## Find out the costs of studying and living in Bristol.

### Tuition fees

Tuition fees will depend on your course and your fee status. You can find international tuition fees (including EU) for the academic year 2025/26 in the following table.

Fees are reviewed every year and are not fixed for the duration of your studies. You should budget for an annual increase of up to 8% (this does not apply to undergraduate courses in medicine, dentistry and veterinary science).

For the latest information about tuition fees, visit [bristol.ac.uk/tuition-fees](https://bristol.ac.uk/tuition-fees)

† To secure your place on a pre-sessional course, you will be required to pay your full tuition fee as a deposit. Pre-sessional fees are refundable in full within 14 days of original payment. After this period, no refunds will be made for students withdrawing from study.

### Foundation and pre-sessional programme fees

Programme	Annual tuition fee 2025/26	Deposit
International Foundation Programme <i>Arts and Humanities</i>	£26,200	£2,000
International Foundation Programme <i>Dentistry</i>	£27,200	£2,000
International Foundation Programme <i>Science, Technology, Engineering and Mathematics</i>	£27,200	£2,000
International Foundation Programme <i>Social Sciences and Law</i>	£26,200	£2,000
Pre-sessional English language courses	£3,510 – £5,740	None†

### Undergraduate course fees

Course	Annual tuition fee 2025/26	Deposit
Arts-based subjects	£24,800 – £30,400	None
Science-based subjects	£30,400 – £32,500	None
BDS Dentistry	£48,300	None
MB ChB Medicine	£44,500	None
BVSc Veterinary Science	£40,700	None

### Postgraduate programme fees

Tuition fees vary depending on degree. Search for your programme online at [bristol.ac.uk/postgraduate](https://bristol.ac.uk/postgraduate). A deposit of £2,000 may be required.

### Cost of living

You can live well in Bristol, with the cost of living (without any rent) 20% lower than London.\*

For advice about student living costs, visit [bristol.ac.uk/living-expenses](https://bristol.ac.uk/living-expenses)

Grocery item	Typical cost
1 litre milk	£1.11
1.5 litre bottled water	£1.21
1kg of onions	£1.06
1kg of bananas	£1.00
1kg of white rice	£1.26
1kg of potatoes	£1.32
12 eggs	£2.46
Cappuccino in a café	£3.45
Loaf of bread	£1.16
1kg of cheese	£7.61

\*numbeo.com, May 2024



# THINK BIG SCHOLARSHIPS

Find out more about our scholarships  
[bristol.ac.uk/international-scholarships](http://bristol.ac.uk/international-scholarships)



‘When I was freshly graduated and looking for options, receiving a scholarship from Bristol opened the door to possibility. It allowed me to do my master’s at Bristol, one of the top universities in the world.’

**Alok, India**  
(MSc Nutrition Physical Activity and Public Health)

**We have a range of scholarships that can help fund your studies, as well as exclusive development opportunities for scholars.**

### Think Big at Bristol

Our Think Big programme offers a range of scholarships for international students, including those from the EU.

For 2025, we are investing £3.5 million into our Think Big international scholarships.

Scholarships are available for eligible postgraduate master’s programmes and undergraduate courses (excluding clinical courses).

### Think Big Development Programme

As well as receiving financial support, Think Big scholarship winners have the opportunity to take part in our Think Big Development Programme. Exclusive to University of Bristol scholars, the programme aims to increase your confidence and employability, giving you the springboard you need to fulfil your potential and excel in your chosen field.

Our tailored framework will help you to develop holistically and cultivate core skills with a practical, straightforward approach. It also gives you the opportunity to network and build a community with other enthusiastic scholars. Of our past scholars, 98% felt the programme helped them to develop their leadership skills.

### More funding

Other financial support may be available to help fund your studies. This includes a range of scholarships with our external partners. To find out more and check your eligibility, use our online funding search tool at [bristol.ac.uk/scholarships](http://bristol.ac.uk/scholarships)

# £3.5M

in scholarships for international students in 2025

# HOW TO APPLY

**We offer hundreds of courses and programmes across a range of levels. Find out more about our degrees and how to apply.**

## **Undergraduate courses**

We offer single honours and joint honours courses, so you can study one or two subjects during your bachelor's degree.

Most undergraduate courses take three years of full-time study. Some degrees include an extra year abroad or in industry. In many subjects you can choose a four-year course that leads to a master's degree. Dentistry, medicine and veterinary science degrees usually take five years.

Most applicants should apply through the Universities and Colleges Admissions Service (UCAS). Our UCAS institution code is BRISL B78. For more details and exceptions, see [bristol.ac.uk/international-ug-apply](http://bristol.ac.uk/international-ug-apply)



## **Postgraduate taught programmes**

Postgraduate taught programmes lead to a master's degree and usually take one year of full-time study. We also offer Postgraduate Diplomas and Certificates in some subjects.

Apply using our online application form at [bristol.ac.uk/pg-apply](http://bristol.ac.uk/pg-apply)

## **Postgraduate research programmes**

A Doctor of Philosophy (PhD) is the most common research degree, usually taking three to four years of full-time study. We also offer one-year or two-year master's by research degrees, as well as professional doctorates for those who are already qualified to an advanced level.

You may need to propose your own area of study. You can find out what your research proposal should contain, and search for a potential supervisor, on our online course pages. We recommend emailing your chosen supervisor to discuss your proposal before applying.

Apply using our online application form at [bristol.ac.uk/pg-apply](http://bristol.ac.uk/pg-apply)





### **International Foundation Programme**

Our one-year International Foundation Programme can be taken before starting an undergraduate degree. You will develop both your academic and language ability through tailored subject-specific pathways, which prepare you for the undergraduate degree of your choice.

International Foundation Programme applicants based in mainland China should apply through our China Office. Other applicants should apply through Kaplan International Pathways, our recruitment and admissions partner. Find out how at [bristol.ac.uk/ifp-apply](http://bristol.ac.uk/ifp-apply)

### **Pre-sessional courses**

A summer pre-sessional course will provide the academic communication skills you need to succeed. It can also help you meet the language requirements of your chosen programme.

Find out more at [bristol.ac.uk/pre-sessional](http://bristol.ac.uk/pre-sessional)



### **Intercalated courses**

Current medical, dental and veterinary students can apply to intercalate at Bristol. You will complete an extra degree in an intensive year away from your normal studies.

Find out more at [bristol.ac.uk/intercalate](http://bristol.ac.uk/intercalate)



# ENTRY REQUIREMENTS

**We accept a wide range of qualifications and assess every application on individual merit.**

## **International qualifications**

You can find detailed information about accepted international qualifications online. Find your country at [bristol.ac.uk/international/countries](https://bristol.ac.uk/international/countries)

For some courses, you need to have studied specific subjects or take an admissions test. These requirements are listed on our online course pages.

## **English language requirements**

International applicants need to have a good standard of English to study at Bristol. You can find the language requirements for each course on our online course listings.

You do not need to have the required English language profile before you apply. If you don't yet have the required qualifications, we will ask for these as part of your offer.

Find details of accepted qualifications at [bristol.ac.uk/study/language-requirements](https://bristol.ac.uk/study/language-requirements)

## **Education agents**

Bristol has agreements with various education representatives, or agents, around the world. Using an agent does not put you at an advantage or disadvantage when applying. Find a list of our approved and contracted agents in your country at [bristol.ac.uk/international/countries](https://bristol.ac.uk/international/countries)

## **Deadlines**

Check the deadline for your degree application on our online course pages.

Bear in mind that some scholarships will have their own application deadlines. You often need to apply for your chosen degree before you can apply for funding.

## **How we assess your application**

Our admissions statements contain important information about how we assess applications. We publish admissions statements for every course on the online course pages. Updated statements for 2025 entry will be available in summer 2024.



## **Offer types**

A conditional offer means you need to achieve specified grades to take up your place. This may include English language requirements. An unconditional offer means you have already met all the academic requirements.

## **Mature students**

A mature student is aged 21 or above when they start their undergraduate degree. We welcome applications from mature students and provide dedicated support. Find out about applying as a mature student at [bristol.ac.uk/mature](https://bristol.ac.uk/mature)

# COURSES AND PROGRAMMES

## Pre-sessional courses

Search for a pre-sessional course at [bristol.ac.uk/pre-sessional](http://bristol.ac.uk/pre-sessional)

## International Foundation Programme

Find out more about an International Foundation Programme at [bristol.ac.uk/ifp](http://bristol.ac.uk/ifp)

Programme	Duration
Arts and Humanities pathway	1 year
Dentistry pathway	1 year
Science, Technology, Engineering and Mathematics pathway	1 year
Social Sciences and Law pathway	1 year

## Intercalated degrees

Search for an intercalated degree at [bristol.ac.uk/intercalate](http://bristol.ac.uk/intercalate)

### Standalone courses

Child Health Research (BSc)
Clinical Sciences (BSc)
Epidemiology (MSc)
Functional and Clinical Anatomy (BSc)
Global Health (BSc)
Global Wildlife Health and Conservation (MSc)
Healthcare Ethics and Law (BSc)
Health, Law and Society (LLM)
Health Sciences Research (MRes)
Health Sciences Research (Renal) (MRes)
Health Sciences Research (Translational Cardiovascular Medicine) (MRes)
Medical Humanities (BA)
Nutrition, Physical Activity and Public Health (MSc)
Public Health (MSc)
Translational Cardiovascular Medicine (MSc)

### One-year entry onto three-year courses

Biochemistry with Medical Biochemistry (BSc)
Cancer Biology and Immunology (BSc)
Cellular and Molecular Medicine (BSc)
Childhood Studies (BSc)
Medical Microbiology (BSc)
Neuroscience (BSc)
Pharmacology (BSc)
Physiological Science (BSc)
Social Policy (BSc)
Virology and Immunology (BSc)



# UNDERGRADUATE COURSES

Search for an undergraduate course at [bristol.ac.uk/undergraduate](http://bristol.ac.uk/undergraduate)

Course	UCAS code	Length	Typical A-level offer	Typical IB offer
<b>A</b>				
<b>ACCOUNTING AND FINANCE</b>				
BSc Accounting and Finance	NN43	3 years	AAA	36
BSc Accounting and Finance with Professional Placement	†	4 years	AAA	36
BSc Accounting and Finance with Study Abroad	NN46	4 years	AAA	36
BSc Accounting and Management	NN42	3 years	AAA	36
BSc Accounting and Management with Professional Placement	†	4 years	AAA	36
BSc Accounting and Management with Study Abroad	NN45	4 years	AAA	36
BSc Economics and Accounting	LN14	3 years	AAA	36
BSc Economics and Accounting with Professional Placement	†	4 years	AAA	36
BSc Economics and Accounting with Study Abroad	LN16	4 years	AAA	36
BSc Economics and Finance	LN13	3 years	AAA	36
BSc Economics and Finance with Study Abroad	LN15	4 years	AAA	36
BSc Finance	N300	3 years	AAA	36
<b>AEROSPACE ENGINEERING</b>				
BEng Aerospace Engineering	H405	3 years	A*AA	38
BEng Aerospace Engineering with a Year in Industry	†	4 years	A*AA	38
MEng Aerospace Engineering	H410	4 years	A*AA	38
MEng Aerospace Engineering with a Year in Industry	†	5 years	A*AA	38
MEng Aerospace Engineering with Study Abroad	†	4 years	A*AA	38

Course	UCAS code	Length	Typical A-level offer	Typical IB offer
<b>ANCIENT HISTORY</b>				
BA Ancient History	V110	3 years	AAB	34
<b>ANTHROPOLOGY AND ARCHAEOLOGY</b>				
BA Anthropology	XD49	3 years	AAB	34
BA Archaeology and Anthropology	VL46	3 years	AAB	34
MArts Anthropology with Innovation	XD50	4 years	AAB	34
<b>APPLIED ANATOMY</b>				
BSc Applied Anatomy	B112	3 years	ABB	32
<b>ARTIFICIAL INTELLIGENCE</b>				
BEng Artificial Intelligence*	G164	3 years	A*AA	38
BSc Computer Science with Artificial Intelligence*	G405	3 years	A*AA	38
MEng Computer Science with Artificial Intelligence*	G406	4 years	A*AA	38
MEng Computer Science with Artificial Intelligence with Study Abroad*	†	4 years		
<b>B</b>				
<b>BIOCHEMISTRY</b>				
BSc Biochemistry	C700	3 years	AAA	36
BSc Biochemistry with Medical Biochemistry	C720	3 years	AAA	36
BSc Biochemistry with Molecular Biology and Biotechnology	C790	3 years	AAA	36
BSc Biochemistry with Study in Industry	†	4 years	AAA	36
MSci Biochemistry	C701	4 years	AAA	36

† Entry by transfer  
\* Subject to approval

Course	UCAS code	Length	Typical A-level offer	Typical IB offer
MSci Biochemistry with Medical Biochemistry	C721	4 years	AAA	36
MSci Biochemistry with Molecular Biology and Biotechnology	C791	4 years	AAA	36
<b>BIOLOGICAL SCIENCES</b>				
BSc Biology	C100	3 years	AAA	36
BSc Biology with Professional Placement	†	4 years	AAA	36
BSc Plant Sciences	C201	3 years	AAA	36
BSc Plant Sciences with Professional Placement	†	4 years	AAA	36
BSc Zoology	C300	3 years	AAA	36
BSc Zoology with Professional Placement	†	4 years	AAA	36
MSci Biology	C103	4 years	AAA	36
MSci Biology with Professional Placement	†	5 years	AAA	36
MSci Plant Sciences	C203	4 years	AAA	36
MSci Plant Sciences with Professional Placement	†	5 years	AAA	36
MSci Zoology	C303	4 years	AAA	36
MSci Zoology with Professional Placement	†	5 years	AAA	36
<b>BIOMEDICAL SCIENCES</b>				
BSc Biomedical Sciences	B900	3 years	AAA	36
<b>BUSINESS AND MANAGEMENT</b>				
BSc Accounting and Management	NN42	3 years	AAA	36
BSc Accounting and Management with Professional Placement	†	4 years	AAA	36
BSc Accounting and Management with Study Abroad	NN45	4 years	AAA	36
BSc Business Analytics	N100	3 years	AAA	36
BSc Business and Management	N200	3 years	AAA	36
BSc Business and Management with Study Abroad	N201	4 years	AAA	36
BSc Business and Management with Study Abroad in a Modern Language	4H56	4 years	AAA	36
BSc Economics and Management	LN12	3 years	AAA	36
BSc Economics and Management with Study Abroad	LN17	4 years	AAA	36
BSc International Business Management	N120	3 years	AAA	36

Course	UCAS code	Length	Typical A-level offer	Typical IB offer
BSc International Business Management with Study Abroad	N121	4 years	AAA	36
International Business Management with Study Abroad in a Modern Language	N122	4 years	AAA	36

## C

### CELLULAR AND MOLECULAR MEDICINE

BSc Cancer Biology and Immunology	B131	3 years	AAB	34
BSc Cancer Biology and Immunology with Study in Industry	†	4 years	AAB	34
BSc Cellular and Molecular Medicine	B130	3 years	AAB	34
BSc Cellular and Molecular Medicine with Study in Industry	†	4 years	AAB	34
BSc Medical Microbiology	C521	3 years	AAB	34
BSc Medical Microbiology with Study in Industry	†	4 years	AAB	34
BSc Virology and Immunology	C540	3 years	AAB	34
BSc Virology and Immunology with Study in Industry	†	4 years	AAB	34
MSci Cancer Biology and Immunology	B132	4 years	AAB	34
MSci Cellular and Molecular Medicine	B133	4 years	AAB	34
MSci Medical Microbiology	C522	4 years	AAB	34
MSci Virology and Immunology	C541	4 years	AAB	34

### CHEMICAL PHYSICS

BSc Chemical Physics	F320	3 years	AAA	36
MSci Chemical Physics	F322	4 years	A*AA	38
MSci Chemical Physics with Industrial Experience	F323	4 years	A*AA	38

### CHEMISTRY

BSc Chemistry	F100	3 years	AAA	36
MSci Chemistry	F103	4 years	A*AA	38
MSci Chemistry with Industrial Experience	F105	4 years	A*AA	38
MSci Chemistry with Study Abroad	F107	4 years	A*AA	38
MSci Chemistry with Study Abroad in a Modern Language	F104	4 years	A*AA	38

Course	UCAS code	Length	Typical A-level offer	Typical IB offer
<b>CHEMISTRY WITH COMPUTING</b>				
BSc Chemistry with Computing	F130	3 years	AAA	36
MSci Chemistry with Computing	F131	4 years	A*AA	38

### CHILDHOOD STUDIES

BSc Childhood Studies	L520	3 years	ABB	32
BSc Childhood Studies with Study Abroad	L525	4 years	ABB	32
BSc Childhood Studies with Quantitative Research Methods	L522	3 years	ABB	32

### CIVIL ENGINEERING

BEng Civil Engineering	H205	3 years	A*AA	38
BEng Civil Engineering with a Year in Industry	†	4 years	A*AA	38
MEng Civil Engineering	H200	4 years	A*AA	38
MEng Civil Engineering with a Year in Industry	†	5 years	A*AA	38
MEng Civil Engineering with Study Abroad	†	4 years	A*AA	38

### CLASSICAL STUDIES

BA Classical Studies	Q810	3 years	AAB	34
BA English and Classical Studies	QQ38	3 years	AAA	36

### CLASSICS

BA Classics	Q800	3 years	AAB	34
-------------	------	---------	-----	----

### COMPARATIVE LITERATURES AND CULTURES

BA Comparative Literatures and Cultures	Q200	3 years	AAB	34
BA Comparative Literatures and Cultures and French	QR38	4 years	ABB	32
BA Comparative Literatures and Cultures and German	QR40	4 years	ABB	32
BA Comparative Literatures and Cultures and Italian	QR41	4 years	ABB	32
BA Comparative Literatures and Cultures and Portuguese	QR42	4 years	ABB	32
BA Comparative Literatures and Cultures and Russian	QR43	4 years	ABB	32
BA Comparative Literatures and Cultures and Spanish	QR39	4 years	ABB	32

Course	UCAS code	Length	Typical A-level offer	Typical IB offer
<b>COMPUTER SCIENCE</b>				
BSc Computer Science	G400	3 years	A*AA	38

BSc Computer Science with Artificial Intelligence*	G405	3 years	A*AA	38
--	------	---------	------	----

BSc Mathematics and Computer Science	GG14	3 years	A*A*A	40
MEng Computer Science	G403	4 years	A*AA	38
MEng Computer Science with Artificial Intelligence*	G406	4 years	A*AA	38

MEng Computer Science with Artificial Intelligence with Study Abroad*	†	4 years		
---	---	---------	--	--

MEng Computer Science with Study Abroad	†	4 years	A*AA	38
---	---	---------	------	----

MEng Computer Science with Innovation	G404	4 years	A*AA	38
---------------------------------------	------	---------	------	----

MEng Mathematics and Computer Science	GG1K	4 years	A*A*A	40
---------------------------------------	------	---------	-------	----

### CRIMINOLOGY

BSc Criminology	M900	3 years	AAB	34
-----------------	------	---------	-----	----

BSc Criminology with Quantitative Research Methods	M902	3 years	AAB	34
--	------	---------	-----	----

BSc Criminology with Study Abroad	M901	4 years	AAB	34
-----------------------------------	------	---------	-----	----

BSc Social Policy with Criminology	LM49	3 years	AAB	34
------------------------------------	------	---------	-----	----

## D

### DENTISTRY

BDS Dentistry	A206	5 years	AAA	36
---------------	------	---------	-----	----

### DESIGN ENGINEERING

BEng Design Engineering*	H105	3 years	A*AA	38
--------------------------	------	---------	------	----

BEng Design Engineering with a Year in Industry*	†	4 years	A*AA	38
--	---	---------	------	----

MEng Design Engineering*	H100	4 years	A*AA	38
--------------------------	------	---------	------	----

MEng Design Engineering with a Year in Industry*	†	5 years	A*AA	38
--	---	---------	------	----

Course	UCAS code	Length	Typical A-level offer	Typical IB offer
<b>E</b>				
<b>ECONOMICS</b>				
BSc Economics	L100	3 years	A*AA	38
BSc Economics and Accounting	LN14	3 years	AAA	36
BSc Economics and Accounting with Professional Placement	†	4 years	AAA	36
BSc Economics and Accounting with Study Abroad	LN16	4 years	AAA	36
BSc Economics and Econometrics	L140	3 years	A*AA	38
BSc Economics and Econometrics with Study Abroad	L142	4 years	A*AA	38
BSc Economics and Finance	LN13	3 years	AAA	36
BSc Economics and Finance with Study Abroad	LN15	4 years	AAA	36
BSc Economics and Management	LN12	3 years	AAA	36
BSc Economics and Management with Study Abroad	LN17	4 years	AAA	36
BSc Economics and Mathematics	LG11	3 years	A*A*A	40
BSc Economics and Politics	LL12	3 years	AAA	36
BSc Economics and Politics with Study Abroad	LL14	4 years	AAA	36
BSc Economics with Study Abroad	L105	4 years	A*AA	38
BSc Economics with Study Abroad in a Modern Language	L101	4 years	A*AA	38
BSc Philosophy and Economics	VL51	3 years	AAA	36
BSc Philosophy and Economics with Study Abroad	VL54	4 years	AAA	36
MSci Economics with Innovation	L104	4 years	A*AA	38
<b>EDUCATION</b>				
BSc Education Studies	X300	3 years	ABB	32
BSc Education Studies with Study Abroad	X304	4 years	ABB	32
BSc Psychology in Education	X301	3 years	ABB	32
BSc Psychology in Education with Study Abroad	X305	4 years	ABB	32
<b>ELECTRICAL AND ELECTRONIC ENGINEERING</b>				
BEng Electrical and Electronic Engineering	H600	3 years	AAA	36
BEng Electrical and Electronic Engineering with a Year in Industry	†	4 years	AAA	36

Course	UCAS code	Length	Typical A-level offer	Typical IB offer
BEng Mechanical and Electrical Engineering	H361	3 years	AAA	36
BEng Mechanical and Electrical Engineering with a Year in Industry	†	4 years	AAA	36
MEng Electrical and Electronic Engineering	H606	4 years	AAA	36
MEng Electrical and Electronic Engineering with a Year in Industry	†	5 years	AAA	36
MEng Electrical and Electronic Engineering with Innovation	H604	4 years	AAA	36
MEng Electrical and Electronic Engineering with Study Abroad	†	4 years	AAA	36
MEng Electrical and Electronic Engineering with Study Abroad in a Modern Language	H605	4 years	AAA	36
MEng Mechanical and Electrical Engineering	H360	4 years	AAA	36
MEng Mechanical and Electrical Engineering with a Year in Industry	†	5 years	AAA	36
<b>ENGINEERING MATHEMATICS</b>				
BEng Engineering Mathematics	G162	3 years	AAA	36
BEng Engineering Mathematics with a Year in Industry	†	4 years	AAA	36
MEng Engineering Mathematics	G161	4 years	AAA	36
MEng Engineering Mathematics with a Year in Industry	†	5 years	AAA	36
MEng Engineering Mathematics with Study Abroad	G160	4 years	AAA	36
<b>ENGLISH</b>				
BA English	Q300	3 years	AAA	36
BA English with Study Abroad	Q301	4 years	AAA	36
BA English and Classical Studies	QQ38	3 years	AAA	36
BA English and French	QR31	4 years	AAA	36
BA English and German	QR32	4 years	AAA	36
BA English and History	QV31	3 years	AAA	36
BA English and Italian	QR33	4 years	AAA	36
BA English and Philosophy	QV35	3 years	AAA	36
BA English and Portuguese	QR35	4 years	AAA	36
BA English and Russian	QR37	4 years	AAA	36
BA English and Spanish	QR34	4 years	AAA	36
BA Film and English	6T3X	3 years	AAA	36
BA Theatre and English	4CC8	3 years	AAA	36

Course	UCAS code	Length	Typical A-level offer	Typical IB offer
<b>ENVIRONMENTAL GEOSCIENCE</b>				
BSc Environmental Geoscience	F640	3 years	ABB	32
MSci Environmental Geoscience	F641	4 years	ABB	32
MSci Environmental Geoscience with Study Abroad	F644	4 years	ABB	32
<b>F</b>				
<b>FILM AND TELEVISION</b>				
BA Film and English	6T3X	3 years	AAA	36
BA Film and French	2LK6	4 years	AAB	34
BA Film and German	4F29	4 years	AAB	34
BA Film and Italian	4L92	4 years	AAB	34
BA Film and Portuguese	4PP8	4 years	AAB	34
BA Film and Spanish	L288	4 years	AAB	34
BA Film and Television	4M5N	3 years	AAB	34
MArts Film and Television with Innovation	4M50	4 years	AAB	34
<b>FRENCH</b>				
BA Modern Languages	R900	4 years	ABB	32
BA Comparative Literatures and Cultures and French	QR38	4 years	ABB	32
BA English and French	QR31	4 years	AAA	36
BA Film and French	2LK6	4 years	AAB	34
BA History and French	VR11	4 years	AAA	36
BA History of Art and French	VR31	4 years	ABB	32
BA International Business Management and French	NR11	4 years	AAA	36
BA Music and French	WR31	4 years	AAB	34
BA Philosophy and French	RV15	4 years	AAB	34
BA Politics and French	RL12	4 years	AAB	34
BA Theatre and French	W43F	4 years	AAB	34
LLB Law and French	MR11	4 years	A*AA	38
<b>G</b>				
<b>GEOGRAPHY</b>				
BSc Geography	F800	3 years	AAA	36
BSc Geography with Study Abroad	09F4	4 years	AAA	36
BSc Geography with Study Abroad in a Modern Language	F801	4 years	AAA	36
MSci Geography with Innovation	F805	4 years	AAA	36

Course	UCAS code	Length	Typical A-level offer	Typical IB offer
<b>GEOLOGY</b>				
BSc Geology	F600	3 years	ABB	32
MSci Geology	F603	4 years	ABB	32
MSci Geology with Study Abroad	F609	4 years	ABB	32

<b>GERMAN</b>				
BA Modern Languages	R900	4 years	ABB	32
BA Comparative Literatures and Cultures and German	QR40	4 years	ABB	32
BA English and German	QR32	4 years	AAA	36
BA Film and German	4F29	4 years	AAB	34
BA History and German	VR12	4 years	AAA	36
BA History of Art and German	VR32	4 years	ABB	32
BA International Business Management and German	NR12	4 years	AAA	36
BA Music and German	WR32	4 years	AAB	34
BA Philosophy and German	RV25	4 years	AAB	34
BA Politics and German	RL22	4 years	AAB	34
BA Theatre and German	21C7	4 years	AAB	34
LLB Law and German	MR12	4 years	A*AA	38

## H

<b>HISTORY</b>				
BA English and History	QV31	3 years	AAA	36
BA History	V100	3 years	AAA	36
BA History with Study Abroad	V102	4 years	AAA	36
BA History and French	VR11	4 years	AAA	36
BA History and German	VR12	4 years	AAA	36
BA History and Italian	VR13	4 years	AAA	36
BA History and Portuguese	VR15	4 years	AAA	36
BA History and Russian	VR17	4 years	AAA	36
BA History and Spanish	VR14	4 years	AAA	36
MArts History with Innovation	V104	4 years	AAA	36

### HISTORY OF ART

BA History of Art	V350	3 years	ABB	32
BA History of Art and French	VR31	4 years	ABB	32
BA History of Art and German	VR32	4 years	ABB	32
BA History of Art and Italian	VR33	4 years	ABB	32
BA History of Art and Portuguese	VR35	4 years	ABB	32
BA History of Art and Russian	VR37	4 years	ABB	32
BA History of Art and Spanish	VR34	4 years	ABB	32

Course	UCAS code	Length	Typical A-level offer	Typical IB offer
<b>INNOVATION</b>				
MArts Anthropology with Innovation	XD50	4 years	AAB	34
MArts Film and TV with Innovation	4M50	4 years	AAB	34
MArts History with Innovation	V104	4 years	AAA	36
MArts Music with Innovation	W304	4 years	AAB	34
MArts Theatre with Innovation	2Q50	4 years	AAB	34
MEng Computer Science with Innovation	G404	4 years	A*AA	38
MEng Electrical and Electronic Engineering with Innovation	H604	4 years	AAA	36
MSci Accounting with Innovation	NN50	4 years	AAA	36
MSci Economics with Innovation	L104	4 years	A*AA	38
MSci Finance with Innovation	N305	4 years	AAA	36
MSci Geography with Innovation	F805	4 years	AAA	36
MSci Business and Management with Innovation	N204	4 years	AAA	36
MSci Physics with Innovation	F306	4 years	A*AA	38
MSci Psychology with Innovation	C804	4 years	A*AA	38

MArts Anthropology with Innovation	XD50	4 years	AAB	34
MArts Film and TV with Innovation	4M50	4 years	AAB	34
MArts History with Innovation	V104	4 years	AAA	36
MArts Music with Innovation	W304	4 years	AAB	34
MArts Theatre with Innovation	2Q50	4 years	AAB	34
MEng Computer Science with Innovation	G404	4 years	A*AA	38
MEng Electrical and Electronic Engineering with Innovation	H604	4 years	AAA	36
MSci Accounting with Innovation	NN50	4 years	AAA	36
MSci Economics with Innovation	L104	4 years	A*AA	38
MSci Finance with Innovation	N305	4 years	AAA	36
MSci Geography with Innovation	F805	4 years	AAA	36
MSci Business and Management with Innovation	N204	4 years	AAA	36
MSci Physics with Innovation	F306	4 years	A*AA	38
MSci Psychology with Innovation	C804	4 years	A*AA	38

### INTERNATIONAL BUSINESS MANAGEMENT

BA International Business Management and French	NR11	4 years	AAA	36
BA International Business Management and German	NR12	4 years	AAA	36
BA International Business Management and Spanish	NR14	4 years	AAA	36
BSc International Business Management	N120	3 years	AAA	36
BSc International Business Management with Study Abroad	N121	4 years	AAA	36
BSc International Business Management with Study Abroad in a Modern Language	N122	4 years	AAA	36

### ITALIAN

BA Modern Languages	R900	4 years	ABB	32
BA Comparative Literatures and Cultures and Italian	QR41	4 years	ABB	32
BA English and Italian	QR33	4 years	AAA	36
BA Film and Italian	4L92	4 years	AAB	34
BA History and Italian	VR13	4 years	AAA	36
BA History of Art and Italian	VR33	4 years	ABB	32
BA Music and Italian	WR33	4 years	AAB	34

Course	UCAS code	Length	Typical A-level offer	Typical IB offer
BA Philosophy and Italian	RV35	4 years	AAB	34
BA Politics and Italian	RL32	4 years	AAB	34
BA Theatre and Italian	22FF	4 years	AAB	34

## L

<b>LAW</b>				
LLB Law	M100	3 years	A*AA	38
LLB Law and French	MR11	4 years	A*AA	38
LLB Law and German	MR12	4 years	A*AA	38
LLB Law and Spanish	MR13	4 years	A*AA	38
LLB Law with Study Abroad	†	4 years	A*AA	38
LLB Law with Study in Continental Europe	†	4 years	A*AA	38

### LIBERAL ARTS

BA Liberal Arts	2ZB7	3 years	AAA	36
MLibArts Liberal Arts with Study Abroad	2T23	4 years	AAA	36

## M

<b>MARKETING</b>				
BSc Marketing	N500	3 years	AAA	36
BSc Marketing with Study Abroad	N504	4 years	AAA	36
BSc Marketing with Study Abroad in a Modern Language	N501	4 years	AAA	36

### MATHEMATICS

BSc Data Science	G1G5	3 years	A*AA	38
BSc Data Science with a Year in Industry	G1G6	4 years	A*AA	38
BSc Economics and Mathematics	LG11	3 years	A*AA	40
BSc Mathematics	G100	3 years	A*AA	40
BSc Mathematics and Computer Science	GG14	3 years	A*AA	40
BSc Mathematics and Philosophy	VG51	3 years	A*AA	38
BSc Mathematics and Physics	GFD3	3 years	A*AA	38
BSc Mathematics with Statistics	G1G3	3 years	A*AA	40
BSc Mathematics with Statistics for Finance	G1G4	3 years	A*AA	40
BSc Mathematics with Study Abroad in a Modern Language	G101	4 years	A*AA	40
MEng Mathematics and Computer Science	GG1K	4 years	A*AA	40

Course	UCAS code	Length	Typical A-level offer	Typical IB offer
MSci Mathematics	G103	4 years	A*A*A	40
MSci Mathematics and Philosophy	GV15	4 years	A*AA	38
MSci Mathematics and Physics	GFC3	4 years	A*AA	38
MSci Mathematics with Statistics	G1GH	4 years	A*A*A	40
MSci Mathematics with Study Abroad	G105	4 years	A*A*A	40
MSci Mathematics with Study Abroad in a Modern Language	G104	4 years	A*A*A	40

### MECHANICAL ENGINEERING

BEng Mechanical Engineering	H305	3 years	A*AA	38
BEng Mechanical Engineering with a Year in Industry	†	4 years	A*AA	
BEng Mechanical and Electrical Engineering	H361	3 years	AAA	36
MEng Mechanical Engineering	H300	4 years	A*AA	38
MEng Mechanical Engineering with a Year in Industry	†	5 years	A*AA	38
MEng Mechanical Engineering with Study Abroad	†	4 years	A*AA	38
MEng Mechanical and Electrical Engineering	H360	4 years	AAA	36
MEng Mechanical and Electrical Engineering with a Year in Industry	†	5 years	AAA	36

### MEDICINE

MB ChB Medicine	A100	5 years	AAA	36
-----------------	------	---------	-----	----

### MODERN LANGUAGES

BA Modern Languages	R900	4 years	ABB	32
---------------------	------	---------	-----	----

### MUSIC

BA Music	W300	3 years	AAB	34
BA Music and French	WR31	4 years	AAB	34
BA Music and German	WR32	4 years	AAB	34
BA Music and Italian	WR33	4 years	AAB	34
BA Music and Portuguese	WR35	4 years	AAB	34
BA Music and Russian	WR37	4 years	AAB	34
BA Music and Spanish	WR34	4 years	AAB	34
MArts Music with Innovation	W304	4 years	AAB	34

Course	UCAS code	Length	Typical A-level offer	Typical IB offer
<b>N</b>				
<b>NEUROSCIENCE</b>				
BSc Neuroscience	B140	3 years	AAA	36
BSc Neuroscience with Study in Industry	†	4 years	AAA	36
MSci Neuroscience	B141	4 years	AAA	36
MSci Psychology and Neuroscience	CB81	4 years	A*AA	38

## P

### PALAEONTOLOGY AND EVOLUTION

BSc Palaeontology and Evolution	CF17	3 years	ABB	32
MSci Palaeontology and Evolution	CF16	4 years	ABB	32

### PHARMACOLOGY

BSc Pharmacology	B210	3 years	AAB	34
BSc Pharmacology with Study in Industry	B211	4 years	AAB	34
MSci Pharmacology	B212	4 years	AAB	34

### PHILOSOPHY

BA English and Philosophy	QV35	3 years	AAA	36
BA Philosophy	V500	3 years	AAA	36
BA Philosophy and French	RV15	4 years	AAB	34
BA Philosophy and German	RV25	4 years	AAB	34
BA Philosophy and Italian	RV35	4 years	AAB	34
BA Philosophy and Portuguese	RV55	4 years	AAB	34
BA Philosophy and Russian	RV75	4 years	AAB	34
BA Philosophy and Spanish	RV45	4 years	AAB	34
BA Philosophy and Theology	VV56	3 years	AAA	36
BSc Mathematics and Philosophy	VG51	3 years	A*AA	38
BSc Philosophy and Economics	VL51	3 years	AAA	36
BSc Philosophy and Economics with Study Abroad	VL54	4 years	AAA	36
BSc Philosophy and Politics	VL52	3 years	AAA	36
BSc Physics and Philosophy	FV35	3 years	A*AA	38
BSc Sociology and Philosophy	LV35	3 years	AAB	34
MSci Mathematics and Philosophy	GV15	4 years	A*AA	38
MSci Physics and Philosophy	FVH5	4 years	A*AA	38

Course	UCAS code	Length	Typical A-level offer	Typical IB offer
<b>PHYSICS</b>				
BSc Mathematics and Physics	GFD3	3 years	A*AA	38
BSc Physics	F300	3 years	A*AA	38
BSc Physics and Philosophy	FV35	3 years	A*AA	38
BSc Physics with Astrophysics	F3F5	3 years	A*AA	38
MSci Mathematics and Physics	GFC3	4 years	A*AA	38
MSci Physics	F303	4 years	A*AA	38
MSci Physics and Philosophy	FVH5	4 years	A*AA	38
MSci Physics with Astrophysics	F3FM	4 years	A*AA	38
MSci Physics with Industrial Experience	F305	4 years	A*AA	38
MSci Physics with Innovation	F306	4 years	A*AA	38
MSci Physics with International Experience	F307	4 years	A*AA	38
MSci Physics with Study Abroad in a Modern Language	F304	4 years	A*AA	38
MSci Theoretical Physics	F340	4 years	A*AA	38

### PHYSICS WITH COMPUTING

BSc Physics with Computing	F330	3 years	A*AA	38
MSci Physics with Computing	F331	4 years	A*AA	38
MSci Physics with Computing with Industrial Experience	F334	4 years	A*AA	38

### PHYSIOLOGICAL SCIENCE

BSc Physiological Science	B120	3 years	AAB	34
BSc Physiological Science with Study in Industry	†	4 years	AAB	34
MSci Physiological Science	B122	†	AAB	34

### POLITICS AND INTERNATIONAL RELATIONS

BA Politics and French	RL12	4 years	AAB	34
BA Politics and German	RL22	4 years	AAB	34
BA Politics and Italian	RL32	4 years	AAB	34
BA Politics and Portuguese	RL52	4 years	AAB	34
BA Politics and Russian	RL72	4 years	AAB	34
BA Politics and Spanish	RL42	4 years	AAB	34
BSc Economics and Politics	LL12	3 years	AAA	36
BSc Economics and Politics with Study Abroad	LL14	4 years	AAA	36
BSc Philosophy and Politics	VL52	3 years	AAA	36
BSc Politics and International Relations	L200	3 years	AAA	36
BSc Politics and International Relations with Study Abroad	L201	4 years	AAA	36
BSc Politics and Sociology	LL23	3 years	AAB	34

Course	UCAS code	Length	Typical A-level offer	Typical IB offer
BSc Politics with Quantitative Research Methods	L202	3 years	AAA	36
BSc Politics with Quantitative Research Methods with Study Abroad	L204	4 years	AAA	36
BSc Social Policy and Politics	LL42	3 years	AAB	34
MSci Politics with Quantitative Research Methods	L203	4 years	AAA	36

### PORTUGUESE

BA Modern Languages	R900	4 years	ABB	32
BA Comparative Literatures and Cultures and Portuguese	QR42	4 years	ABB	32
BA English and Portuguese	QR35	4 years	AAA	36
BA Film and Portuguese	4PP8	4 years	AAB	34
BA History and Portuguese	VR15	4 years	AAA	36
BA History of Art and Portuguese	VR35	4 years	ABB	32
BA Music and Portuguese	WR35	4 years	AAB	34
BA Philosophy and Portuguese	RV55	4 years	AAB	34
BA Politics and Portuguese	RL52	4 years	AAB	34
BA Theatre and Portuguese	R2D8	4 years	AAB	34

### PSYCHOLOGY

BSc Psychology	C801	3 years	A*AA	38
MSci Psychology with Innovation	C804	4 years	A*AA	38
MSci Psychology and Neuroscience	CB81	4 years	A*AA	38

## Q

### QUANTITATIVE RESEARCH METHODS (QRM)

BSc Childhood Studies with QRM	L522	3 years	ABB	32
BSc Criminology with QRM	M902	3 years	AAB	34
BSc Politics with QRM	L202	3 years	AAA	36
BSc Politics with QRM with Study Abroad	L204	4 years	AAA	36
BSc Social Policy with QRM	L402	3 years	AAB	34
BSc Sociology with QRM	L302	3 years	AAB	34
BSc Sociology with QRM with Study Abroad	L304	4 years	AAB	34
MSci Politics with QRM	L203	4 years	AAA	36
MSci Sociology with QRM	L303	4 years	AAB	34

Course	UCAS code	Length	Typical A-level offer	Typical IB offer
<b>R</b>				
<b>RELIGION AND THEOLOGY</b>				
BA Philosophy and Theology	VV56	3 years	AAA	36
BA Religion and Theology	V600	3 years	ABB	32
MArts Religion and Theology with Study Abroad	V601	4 years	ABB	32

### RUSSIAN

BA Modern Languages	R900	4 years	ABB	32
BA Comparative Literatures and Cultures and Russian	QR43	4 years	ABB	32
BA English and Russian	QR37	4 years	AAA	36
BA History and Russian	VR17	4 years	AAA	36
BA History of Art and Russian	VR37	4 years	ABB	32
BA Music and Russian	WR37	4 years	AAB	34
BA Philosophy and Russian	RV75	4 years	AAB	34
BA Politics and Russian	RL72	4 years	AAB	34

## S

### SOCIAL POLICY

BSc International Social and Public Policy	L410	3 years	AAB	34
BSc International Social and Public Policy with Study Abroad	L411	4 years	AAB	34
BSc Social Policy	L400	3 years	AAB	34
BSc Social Policy and Politics	LL42	3 years	AAB	34
BSc Social Policy and Sociology	LL43	3 years	AAB	34
BSc Social Policy with Criminology	LM49	3 years	AAB	34
BSc Social Policy with Quantitative Research Methods	L402	3 years	AAB	34
BSc Social Policy with Study Abroad	L404	4 years	AAB	34

### SOCIOLOGY

BSc Politics and Sociology	LL23	3 years	AAB	34
BSc Social Policy and Sociology	LL43	3 years	AAB	34
BSc Sociology	L300	3 years	AAB	34
BSc Sociology and Philosophy	LV35	3 years	AAB	34
BSc Sociology with Quantitative Research Methods	L302	3 years	AAB	34
BSc Sociology with Quantitative Research Methods with Study Abroad	L304	4 years	AAB	34

Course	UCAS code	Length	Typical A-level offer	Typical IB offer
BSc Sociology with Study Abroad	L301	4 years	AAB	34
MSci Sociology with Quantitative Research Methods	L303	4 years	AAB	34

### SPANISH

BA Modern Languages	R900	4 years	ABB	32
BA Comparative Literatures and Cultures and Spanish	QR39	4 years	ABB	32
BA English and Spanish	QR34	4 years	AAA	36
BA Film and Spanish	L288	4 years	AAB	34
BA History and Spanish	VR14	4 years	AAA	36
BA History of Art and Spanish	VR34	4 years	ABB	32
BA International Business Management and Spanish	NR14	4 years	AAA	36
BA Music and Spanish	WR34	4 years	AAB	34
BA Philosophy and Spanish	RV45	4 years	AAB	34
BA Politics and Spanish	RL42	4 years	AAB	34
BA Theatre and Spanish	4D8C	4 years	AAB	34
LLB Law and Spanish	MR13	4 years	A*AA	38

## T

### THEATRE

BA Theatre and English	4CC8	3 years	AAA	36
BA Theatre and Film	4KDU	3 years	AAB	34
BA Theatre and French	W43F	4 years	AAB	34
BA Theatre and German	21C7	4 years	AAB	34
BA Theatre and Italian	22FF	4 years	AAB	34
BA Theatre and Performance Studies	2Q3W	3 years	AAB	34
BA Theatre and Portuguese	R2D8	4 years	AAB	34
BA Theatre and Spanish	4D8C	4 years	AAB	34
MArts Theatre with Innovation	2Q50	4 years	AAB	34

## V

### VETERINARY NURSING

BSc Veterinary Nursing and Companion Animal Behaviour	D313	4 years	BBC	29
---	------	---------	-----	----

### VETERINARY SCIENCE

BVSc Veterinary Science	D100	5 years	AAA	36
BVSc Veterinary Science: Accelerated Graduate Entry	D102	4 years	See online	

# POSTGRADUATE TAUGHT PROGRAMMES

Search for a postgraduate taught programme at [bristol.ac.uk/postgraduate](http://bristol.ac.uk/postgraduate)

Programme	Award(s)
<b>FACULTY OF ARTS</b>	
Anthropology	MA
Black Humanities	MA
Business Innovation and Entrepreneurship	MSc
Chinese-English	MA
Audiovisual Translation	MA
Chinese-English Translation	MA
Comparative Literatures and Cultures	MA
Composition of Music for Film and Television	MA
Creative Innovation and Entrepreneurship	MA
Creative Writing	MA
English Literature	MA
Environmental Humanities	MA
Film and Television	MA
History	MA
History of Art	MA
Immersive Arts (Virtual and Augmented Reality)	MA, PGCert, PGDip
Innovation and Entrepreneurship	MSc
Medieval Studies	MA
Music	MA
Philosophy	MA, PGDip
Social Innovation and Entrepreneurship	MSc
Technology Innovation and Entrepreneurship	MSc
Translation (Online)	MA, PGDip

Programme	Award(s)
<b>FACULTY OF ENGINEERING</b>	
Advanced Composites	MSc
Advanced Microelectronic Systems Engineering	MSc
Aerial Robotics	MSc
Biorobotics	MSc
Communication Networks and Signal Processing	MSc
Computer Science (Conversion)	MSc
Cyber Security (Infrastructures Security)	MSc
Data Science	MSc
Data Science (Online)	MSc
Digital Health	MSc
Earthquake Engineering and Infrastructure Resilience	MSc
Engineering Mathematics	MSc
Engineering with Management	MSc
Financial Technology with Data Science	MSc
Human-Computer Interaction (Online)	MSc, PGCert, PGDip
Immersive Technologies (Virtual and Augmented Reality)	MSc, PGCert, PGDip
Optical Communications and Signal Processing	MSc
Optoelectronic and Quantum Technologies	MSc
Robotics	MSc
Sustainable Engineering	MSc
Water and Environmental Management	MSc
Wireless Communications and Signal Processing	MSc

Programme	Award(s)
<b>FACULTY OF HEALTH SCIENCES</b>	
Cardiovascular Perfusion (Online)	MSc
Clinical Oral Surgery	PGCert
Clinical Research Methods and Evidence-Based Medicine	PGCert
Dental Implantology	MSc
Epidemiology	MSc
Global Wildlife Health and Conservation	MSc
Health Economics and Health Policy Analysis	MSc
Health Sciences Research	MRes
Healthcare Improvement (Online)	PGCert
Healthcare Management (Online)	MSc, PGCert, PGDip
Health Professions Education	MSc, PGCert, PGDip
Health Professions Education (Online)	MSc
Medical Statistics and Health Data Science	MSc
Molecular Neuroscience	MSc
Oral Medicine	MSc
Orthodontic Therapy	PGDip
Clinical Perfusion Science	MSc, PGCert
Periodontology	MSc
Public Health	MSc
Reproduction and Development	MSc, PGCert, PGDip
Stem Cells and Regeneration (Online)	MSc, PGCert, PGDip
Translational Cardiovascular Medicine	MSc, PGCert, PGDip

Programme	Award(s)
<b>FACULTY OF LIFE SCIENCES</b>	
Applied Neuropsychology	MSc, PGDip
Applied Neuropsychology (Online)	MSc, PGDip
Bioinformatics	MSc
Biomedical Sciences Research	MSc
Clinical Conscious Sedation and Anxiety Management	PGCert
Clinical Neuropsychology	MSc, PGDip
Clinical Neuropsychology Practice	PGCert
Psychology (Conversion)	MSc
Science Communication for a Better Planet	MSc
Theoretical and Practical Clinical Neuropsychology	PGDip
<b>FACULTY OF SCIENCE</b>	
Climate Change Science and Policy	MSc
Environmental Analytical Chemistry	MSc
Environmental Modelling and Data Analysis	MSc
Environmental Policy and Management	MSc
Geographic Data Science and Spatial Analytics	MSc
Global Development and Environment	MSc
Mathematical Sciences	MSc
Nuclear Science and Engineering	MSc
Palaeobiology	MSc
Scientific Computing with Data Science	MSc

Programme	Award(s)
<b>FACULTY OF SOCIAL SCIENCES AND LAW</b>	
Contemporary Identities	MSc
Development and Security	MSc
East Asian Development and the Global Economy	MSc
Economics	Graduate Diploma, MRes, MSc
Economics and Finance	MSc
Economics, Finance and Management	MSc
Economics with Data Science	MSc
Education	MRes
Education (Inclusive Education)	MSc
Education (Leadership and Policy)	MSc
Education (Learning, Technology and Society)	MSc
Education (Mathematics Education)	MSc
Education (Neuroscience and Education)	MSc
Education (Open Pathway)	MSc
Education (Policy and International Development)	MSc
Education (Secondary)	PGCE
Education (Education and Climate Change)	MSc
Education (Teaching and Learning)	MSc
Gender and International Relations	MSc
Human Geography: Society and Space	MSc

Programme	Award(s)
International Development	MSc
International Relations	MSc
International Security	MSc
Law	MA
Law (Banking and Finance Law)	LLM
Law (Commercial Law)	LLM
Law (Company Law and Corporate Governance)	LLM
Law (Employment, Work and Equality)	LLM
Law (General Legal Studies)	LLM
Law (Health, Law and Society)	LLM
Law (Human Rights Law)	LLM
Law (International Commercial Law)	LLM
Law (International Law)	LLM
Law (International Law and International Relations)	LLM
Law (Environment, Sustainability and Business)	LLM
Law (Innovation and Technology)	LLM
Nutrition, Physical Activity and Public Health	MSc
Policy Research	MSc
Psychology of Education BPS	MSc
Public Policy	MSc
Social and Cultural Theory	MSc
Social Science Research Methods (Politics)	MSc
Social Science Research Methods (Sociology)	MSc
Social Work	MSc
Social Work Research	MSc

Programme	Award(s)
Society, Politics and Climate Change	MSc
Socio-Legal Studies	MSc
Sociology	MSc
Strategy, Change and Leadership	PGCert, PGDip
Teaching English to Speakers of Other Languages (TESOL)	MSc
<b>BUSINESS SCHOOL PROGRAMMES</b>	
Accounting and Finance	MSc
Accounting, Finance and Management	MSc
Banking, Regulation and Financial Stability	MSc
Business Analytics	MSc
Finance and Investment	MSc
Financial Technology	MSc
Global Operations and Supply Chain Management	MSc
Human Resource Management and the Future of Work	MSc
International Business and Strategy: Global Challenges	MSc
Management	MSc
Management (CSR and Sustainability)	MSc
Management (Digitalisation and Big Data)	MSc
Management (Entrepreneurship and Innovation)	MSc
Management (International Business)	MSc
Management (International Human Resource Management)	MSc

Programme	Award(s)
Management (Marketing)	MSc
Management (Project Management)	MSc
Marketing	MSc
Social Science Research Methods (Management)	MSc

PGCert = Postgraduate Certificate  
PGDip = Postgraduate Diploma



# POSTGRADUATE RESEARCH PROGRAMMES

Search for a postgraduate research programme at [bristol.ac.uk/postgraduate](http://bristol.ac.uk/postgraduate)

Programme	Award(s)
<b>FACULTY OF ARTS</b>	
Anthropology and Archaeology	PhD; MPhil
Classics and Ancient History	PhD; MPhil
Comparative Literatures and Cultures	PhD; MPhil
Creative Writing	PhD; MPhil
English Literature	PhD; MPhil
Film and Television	PhD; MPhil
French	PhD; MPhil
German	PhD; MPhil
Hispanic, Portuguese and Latin American Studies	PhD; MPhil
History	PhD; MPhil
History of Art	PhD; MPhil
Innovation and Entrepreneurship	PhD; MPhil
Italian	PhD; MPhil
Linguistics	PhD; MPhil
Medieval Studies	PhD; MPhil
Music	PhD; MPhil; MMus
Philosophy	PhD; MPhil
Religion and Theology	PhD; MPhil
Russian	PhD; MPhil
Theatre and Performance	PhD; MPhil
Translation	PhD; MPhil

Programme	Award(s)
<b>FACULTY OF ENGINEERING</b>	
Aerospace Engineering	PhD; MSc(R)
Civil Engineering	PhD; MSc(R)
Computer Science	PhD; MSc(R)
Cyber Security (Cyber Secure Everywhere)	PhD
Electrical and Electronic Engineering	PhD; MSc(R)
Engineering Biology	PhD
Engineering Mathematics	PhD
Mechanical Engineering	PhD; MSc(R)
Practice-Oriented Artificial Intelligence	PhD
Quantum Information Science and Technologies	PhD
<b>FACULTY OF HEALTH SCIENCES</b>	
Oral and Dental Sciences	PhD; MSc(R)
Orthodontics	DDS
Population Health Sciences	PhD; MD; MSc(R)
Translational Health Sciences	PhD; MD; DSc; MSc(R)
Veterinary Sciences	PhD; MSc(R)
<b>FACULTY OF LIFE SCIENCES</b>	
Biochemistry	PhD; MSc(R)
Biological Sciences	PhD; MSc(R)
Cellular and Molecular Medicine	PhD; MD; MSc(R)
Physiology, Pharmacology and Neuroscience	PhD; MSc(R)
Psychology	PhD; MSc(R)

Programme	Award(s)
<b>FACULTY OF SCIENCE</b>	
Chemistry	PhD; MSc(R)
Earth Sciences	PhD; MSc(R)
Geographical Sciences (Physical Geography)	PhD
Global Environmental Challenges	MSc(R)
Mathematics	PhD; MSc(R)
Physics	PhD; MSc(R)
<b>FACULTY OF SOCIAL SCIENCES AND LAW</b>	
Accounting and Finance	PhD
Advanced Quantitative Methods	PhD
Disability Studies	PhD
East Asian Studies	PhD
Economics	PhD
Education	PhD
Exercise, Nutrition and Health	PhD
Geographical Sciences (Human Geography)	PhD
Global Challenges and Transformations	PhD
Health and Wellbeing	PhD
Law	PhD
Management	PhD
Politics	PhD
Social Policy	PhD
Social Work	PhD
Sociology	PhD
Sustainable Futures	PhD

Programme	Award(s)
<b>FUNDED COHORT-BASED DOCTORAL TRAINING</b>	
Aerosol Science	PhD
Dynamic Molecular Cell Biology (Wellcome Trust)	PhD
Education: Learning, Leadership and Policy	EdD
Educational Psychology	DEdPsy
Great Western Four+ Doctoral Training Partnership (NERC)	PhD
Integrative Cardiovascular Science (BHF)	PhD
Molecular, Genetic and Lifecourse Epidemiology (Wellcome Trust)	PhD
South West Biosciences (SWBio)	
Doctoral Training Partnership (BBSRC)	PhD
Technology Enhanced Chemical Synthesis	PhD

MSc(R) = MSc by research

# OUR LOCATION

Bristol has excellent transport links and an international airport. It's easy to explore the UK and further afield by train, bus and plane.



## Travel times by train

London	1 hour 35 minutes
Bath	15 minutes
Cardiff	55 minutes
Birmingham	1 hour 20 minutes
Manchester	3 hours



## Travel times by plane

Edinburgh	1 hour 15 minutes
Dublin	1 hour 5 minutes
Paris	1 hour 20 minutes
Madrid	2 hours 15 minutes
Rome	2 hours 40 minutes

Average travel times from  
thetrainline.com  
skyscanner.net  
April 2024



If you need all or part of this publication in an alternative format, please contact us:  
Tel: **+44 (0)117 394 1649**  
Email: **marketing-team@bristol.ac.uk**

This prospectus contains information for students planning to start university in autumn 2025. We have made every effort to ensure all details are correct at the time of going to press (August 2024).

However, since this information is subject to change, check the University's website for the latest updates: **bristol.ac.uk**

Design: Toponym Design  
Print: Print Co.

Photography and artwork: Craig Auckland, Chris Bahn, Chris Walker, Dan Rowley, Fotohaus, Huxley, Jon Jerrome, Liz Eve, Paul Box, Raúl Cacho Osés, St Paul's Carnival, The Fleece

© University of Bristol 2024

