

# International Guide 2026/27





## Contact us

University of Bristol  
Beacon House  
Queens Road  
Bristol  
BS8 1QU, UK

Email: [support@international.bristol.ac.uk](mailto:support@international.bristol.ac.uk)  
Tel: +44 (0)117 205 2644  
WhatsApp: +44 (0)745 815 8625

A member of the  
**RUSSELL  
GROUP**

**8<sup>th</sup>**  
in the UK  
(QS World University  
Rankings 2026)

**51<sup>st</sup>**  
in the world  
(QS World University  
Rankings 2026)

**25**  
subjects highly ranked  
in the world's top 100  
(QS World Subject  
Rankings 2025)

**5<sup>th</sup>**  
most targeted by  
top UK employers  
(High Fliers Research 2024)

**5<sup>th</sup>**  
in the UK for research  
(*THE* analysis  
of REF 2021)

# Bringing life to learning

## Contents

|                                  |    |
|----------------------------------|----|
| Welcome                          | 2  |
| Academic excellence              | 4  |
| Inspired by research             | 5  |
| The city of Bristol              | 6  |
| A place of possibilities         | 8  |
| Our Bristol neighbourhood        | 12 |
| Your home from home              | 14 |
| Our residences                   | 16 |
| Careers support                  | 18 |
| Supporting you                   | 20 |
| Societies and sport              | 22 |
| Student life                     | 24 |
| Fees and costs                   | 26 |
| Scholarships                     | 27 |
| How to apply                     | 28 |
| Entry requirements               | 30 |
| Undergraduate courses            | 32 |
| Postgraduate taught programmes   | 38 |
| Postgraduate research programmes | 40 |
| Our location                     | 41 |

## Page

|    |
|----|
| 2  |
| 4  |
| 5  |
| 6  |
| 8  |
| 12 |
| 14 |
| 16 |
| 18 |
| 20 |
| 22 |
| 24 |
| 26 |
| 27 |
| 28 |
| 30 |
| 32 |
| 38 |
| 40 |
| 41 |



# Welcome to Bristol

**Founded in 1876, the University of Bristol has a global reputation for high-quality education and research.**

Bristol is one of the UK's most popular universities, with a diverse academic community. Over 30,000 undergraduates and postgraduates study here, with more than 10,000 international students from around the world.

As a research-intensive university, we aim to answer some of the world's big questions. Join us to work at the forefront of your subject, learn from expert staff, and get involved with our innovative research.

Bristol is committed to protecting the environment, and sustainability is part of everything we do. We were the first UK university to declare a climate emergency and aim to become carbon neutral by 2030.



As a Bristol student, you'll live and study in one of Europe's most vibrant, creative cities. Discover exciting opportunities, friendly people and historic architecture in beautiful, brilliant Bristol.

# 33%

of our students are international

We welcome students  
from more than

# 140

different countries



'The University of Bristol's academic reputation is excellent - it's ranked in the top 10 UK universities and is the 5th most targeted by employers. The University's dedication to research and development shows they prioritise innovation and academic excellence.'

**Eaint, Myanmar**  
(BSc International  
Business Management)

# Academic excellence

**With its outstanding academic environment and research-led teaching, Bristol is the place to reach your potential.**

## **Choice and flexibility**

We offer around 600 undergraduate and postgraduate degrees in a wide range of subjects. Many courses allow you to tailor your studies with flexible unit choices. We also run a foundation programme for international students.

## **A campus built around you**

Our city University has you in mind, with 24-hour libraries, state-of-the-art laboratories and specialist equipment. Our Security Services and University Police Officer help keep students safe around the campus.

Most buildings are based at our Clifton campus, a vibrant hub for all students to connect, study and relax, all within a short walking distance of the city centre.

# 13

Nobel Prize Winners



## **Investing in a new campus**

Opening in 2026, our Temple Quarter Enterprise Campus (TQEC) will be home to exceptional facilities for research, innovation and education. This cutting-edge facility will bring students, staff, community organisations and industry partners under one roof to tackle society's greatest challenges together.

Flexible teaching rooms and study areas range from collaborative spaces to low-distraction rooms. Innovative facilities such as the Design Factory and Maker Space will make TQEC an exciting and dynamic learning environment.

Dedicated space for partners in the building will facilitate networks, provide students with access to potential future employers and create more opportunities for students to integrate with the city and wider region.

Visit [bristol.ac.uk/temple-quarter-campus](https://bristol.ac.uk/temple-quarter-campus) for more information.

# Inspired by research

## Research-led teaching

As a member of the Russell Group and the Worldwide Universities Network, Bristol is one of the UK's leading research universities. This innovative research informs all our courses, so you'll learn from the latest discoveries.

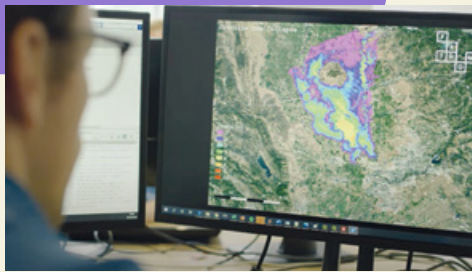


## Using the classics to prevent online harm

Our socio-technical researchers are challenging attitudes towards cyber-security. By tracing the relationship between people and technology back to its roots in the classical world, they have illustrated how our past could hold the key to our cyber future by defining how technology, society and people could work together to keep us safe online.

## Our research impact

These are just a few of the latest research stories from Bristol's inspirational students and academics.



## Preventing disasters with climate modelling

Responsible for the world's first high-resolution simulations of flooding, our research has made it possible to assess risk one metre at a time – at a continental or global scale for any region of the world. Humanitarian agencies are now able to prepare for disasters in a much more targeted way and lives are being saved.

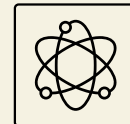


## Pioneering plasters to heal children's hearts

Congenital heart defects develop in the womb, impairing the heart's ability to pump blood effectively. Repeated surgeries are traumatic for children with these defects. Ground-breaking cell heart plasters offers hope, providing a regenerative solution that adapts and grows with the child's heart.



Find out more about our global research impact  
[bristol.ac.uk/research](https://bristol.ac.uk/research)



# 94%

of our research is rated 'world-leading' or 'internationally excellent' (REF 2021)

# The city of Bristol

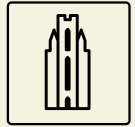


'Travelling to the UK wasn't easy, but as soon as I arrived in Bristol everything changed. The warm welcome people gave me altered my perspective in a positive way. I have gained some incredible friends from the UK and across the world.'

**Paulina, Mexico**  
(BSc Biology)



Find out more about the city  
[bristol.ac.uk/city](https://bristol.ac.uk/city)



'The city of Bristol helped me continue my creative journey with its museums, shows and street art.'

**Lalitha, Singapore**  
(MSc Education: Neuroscience and Education)



# A place of possibilities

# 400+

gardens, parks and nature reserves

# 185

countries represented in the city of Bristol's community

# 12<sup>th</sup>

most sustainable university in the world (QS World University Rankings 2025)



'Bristol is such a safe city. I felt free to explore its spaces (especially the green ones!) with friends even at night.'

**Artur, Brazil**  
(BSc Philosophy)

## Explore our festival scene

Bristol's festivals are world famous. From music and comedy to food and drink, and even hot air balloons, there's always something to celebrate in Bristol.

Find out what's on  
[visitbristol.co.uk/  
whats-on/festivals](https://www.visitbristol.co.uk/whats-on/festivals)



## The city of Bristol is a creative, inspiring place where everyone is welcome. Located in south-west England, it's the UK's 8<sup>th</sup> largest city.\*

Bristol has all the vibrant energy of a big city, but its friendly, relaxed atmosphere will help you feel at home. Our campus is near the centre of Bristol, so you can enjoy everything the city has to offer.

### A welcoming community

We're proud of our multicultural community. The city is home to people from more than 185 countries, speaking 90 languages, with at least 45 religions.\*\* A huge range of restaurants, shops and markets offer delicious food from around the world. Plenty of vegetarian, vegan and halal options are available.

### Safety first

Bristol is a safe city, and has received the prestigious Purple Flag award for 15 years in a row. This means our city centre is a safe and welcoming place to enjoy a night out.

### Something for everyone

As a Bristol student, you can enjoy the best of British culture from day to night. Find exciting events, exhibitions and festivals. Visit eclectic venues to enjoy all kinds of music, theatre and film. Or experience historic sites and famous architecture.

It's easy to explore Bristol's different neighbourhoods by walking or cycling. Discover colourful graffiti, hidden spots and beautiful views around every corner.



If you want to step out of the busy city, there are more than 400 gardens, parks and nature reserves all over town.

### A greener future

Bristol is a green city that shares our commitment to protecting the environment. It's a former European Green Capital and the UK's first cycling city, and aims to become carbon neutral by 2030.

\*Centre for Cities 2023

\*\*Bristol City Council 2025

# See and do

## Shopping

Go shopping for well-known brands at Cabot Circus, or browse our quirky streets like Stokes Croft for vintage clothing and handmade crafts.

## Creative scene

Enjoy Bristol's creative scene with colourful street art, including famous Banksy pieces, and a range of inspiring galleries and exhibition spaces such as the Arnolfini and Spike Island.

## Green spaces

Take a walk around one of Bristol's many iconic green spaces such as the Downs and Ashton Court – perfect for running, hiking and wildlife spotting.

## Architecture

Discover the striking architecture Bristol has to offer, from the Wills Memorial Building at the heart of campus, to the iconic Clifton Suspension Bridge spanning the Avon Gorge.

## Socialise

Spend time with friends at the harbourside, exploring the waterways lined with historic buildings and lively cafés and bars.



### Sport

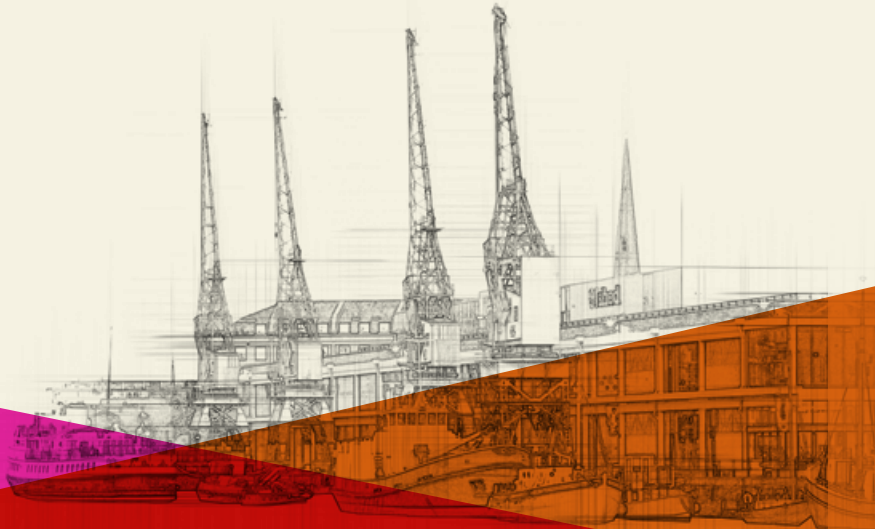
Be inspired by Bristol's active and involved community. Enjoy watching professional sports teams such as Bristol City football club and Bristol Bears rugby club at Ashton Gate stadium.

### Food and Drink

Explore Bristol's diverse food scene – whether you're after budget-friendly street food, a traditional British roast, dinner at an award-winning restaurant, or a cosy lunch with friends.

### Music

Dive into Bristol's iconic music scene. Take in live performances from big names and up-and-coming artists at exciting venues such as Thekla or the Fleece.





2

7

12

11

6

1

8

9

13

5

4

10

3

# Our Bristol neighbourhood

Explore Bristol with our virtual tour  
[bristol.ac.uk/virtual-tour](http://bristol.ac.uk/virtual-tour)



1

## Clifton campus

Our main campus is home to study lounges, libraries, gardens, cafés, a sports centre and the Global Lounge. There's plenty of space to study, socialise or relax.

2

## Langford campus

*(not shown on map)*

Bristol Veterinary School is 14 miles south of the city on its own countryside campus.

3

## Temple Quarter Enterprise campus

*(not shown on map)*

Work is underway on our ambitious new campus, which is part of one of Europe's biggest urban regeneration programmes.

4

## Wapping Wharf

Discover exciting restaurants and independent shops in this up-and-coming area.

🕒 30 minutes

5

## Harbourside

The harbourside is buzzing with restaurants and bars, an independent cinema, and weekly markets. Come here to relax by the water.

🕒 15 minutes

6

## Cabot Tower

Take in the view from the top of Cabot Tower or relax with friends in Brandon Hill park.

🕒 10 minutes

7

## Clifton Village

Clifton is a picturesque area full of Georgian and Regency architecture. Pick up a treat at one of the independent cafés, shops and delis, or visit the famous Clifton Suspension Bridge.

🕒 15 minutes

8

## Park Street

Browse the shops on Park Street during a study break. At the top is the Wills Memorial Building, home to our graduation ceremonies.

🕒 5 minutes

9

## Stokes Croft

*(not shown on map)*

Explore the streets of Stokes Croft for colourful murals, good food and new music.

🕒 15 minutes

## Our student accommodation

See **page 16** for more information about your accommodation options.



### City centre residences

🕒 15 minutes



### Clifton residences

🕒 15 minutes



### Stoke Bishop residences

*(not shown on map)*

🕒 40 minutes, or 20 minute bus journey



### Bedminster residence

*(not shown on map)*

🕒 30 minutes

🕒 *Approximate walking times from the main Clifton campus.*

# Your home from home

As an international student, your first-year accommodation will be an important part of your experience. From University halls to private housing, our accommodation team will be on hand to support you to settle into UK life and feel part of the student community.

## **Our accommodation guarantee**

We guarantee to make you an offer of University accommodation, as long as you meet the criteria and deadline. Find out more on our website [bristol.ac.uk/accommodation-guarantee](https://bristol.ac.uk/accommodation-guarantee)





### **A variety of residences**

Our University accommodation is grouped into four areas of the city: Stoke Bishop in the north, Clifton in the west, Bedminster in the south, and the city centre.

We offer a range of self-catered and catered accommodation. Self-catered residences have kitchen facilities so you can cook your own meals. Catered residences have dining halls that provide two meals a day. All rooms are furnished, with either an en suite or a shared bathroom and WiFi.

Find out more at [bristol.ac.uk/accommodation/about/residences](https://bristol.ac.uk/accommodation/about/residences)

### **Security and support**

Our University accommodation is a safe and supportive environment, where you can make new friends, experience new things, and feel part of our vibrant student community.

Each residence is linked to a Student Support Centre. Our Residential Wellbeing Service offers advice, support and onward referral for students living in University accommodation, and are available 24 hours a day, seven days a week.

Each residence also has a Chief Resident and Senior Residents who live alongside students. They provide pastoral support and put events on throughout the year to support building inclusive communities.

### **Social life and sports**

Each residence has a social committee run by students, which organises a range of social events, fun activities and sporting leagues, for all abilities. Students living in University accommodation can also join free exercise classes in the B:Active Residences programme.

### **Accommodation costs**

The accommodation fee you pay depends on the type of room you have and the facilities in your residence such as common rooms, study spaces, sports facilities, or any other enhancement. Your accommodation fee includes electricity, gas and water bills, internet, a social fund contribution and basic contents insurance.

Accommodation costs for the 2025/26 academic year can be found at [bristol.ac.uk/accommodation/about/costs](https://bristol.ac.uk/accommodation/about/costs)

# Our residences

We have a wide variety of residences around the city of Bristol.

## City centre

City centre residences are within close walking distance of the main campus. Students living here have easy access to a huge range of shops, cafés and restaurants.

## Clifton

These residences are mostly based in and around Clifton, a popular suburb of Bristol with traditional architecture and green spaces, just a 15-minute walk from the main campus.

## Stoke Bishop

Stoke Bishop is around a 40-minute walk from the main campus, and houses most of our catered residences. The site is near the Student Sports Complex, and dedicated bus services between the main campus and city.

## Bedminster

Bedminster is south of the city, and around a 30-minute walk from the main campus, or a 15-minute cycle. A popular student location with a range of bars and restaurants.

 University of Bristol Clifton campus

 Temple Quarter Enterprise campus



Find the right accommodation for you  
[bristol.ac.uk/accommodation](https://bristol.ac.uk/accommodation)



## Accommodation costs

| Accommodation type         | Cost range*      | Contract length |
|----------------------------|------------------|-----------------|
| Undergraduate catered      | £7,283 – £13,034 | 38 weeks        |
| Undergraduate self-catered | £4,761 – £11,352 | 38 – 42 weeks   |
| Postgraduate self-catered  | £5,327 – £19,063 | 51 weeks        |

\*Information correct from June 2025; please visit [bristol.ac.uk/accommodation](https://bristol.ac.uk/accommodation) for most up-to-date information.



Clifton Hill House (Clifton)



Print Hall (city centre)



Wills Hall (Stoke Bishop)



Visit our Careers Service webpage  
[bristol.ac.uk/careers](https://bristol.ac.uk/careers)

# Careers support

**Our expert and impartial support will equip you to secure a fulfilling job, set up your own business or progress to further study.**

## **Excellent reputation**

University of Bristol graduates are highly regarded by employers in the UK and overseas, with 81% of Bristol overseas students in employment or further study 15 months after graduating<sup>†</sup>.

Many of our courses are accredited by professional bodies, societies and institutes, so your degree will be recognised around the globe.

## **An international Careers Service**

Our Careers Service is here to support you throughout your studies and for up to three years after graduation. We can help whether you plan to stay in the UK, return home, or work in a third country.

Our year-round programme includes alumni panels, networking opportunities, talks and workshops. You can learn about your visa options for working in the UK, or how to succeed in job markets around the world.

\* QS World University Rankings 2026

\*\* High Fliers Research 2024

† latest Graduate Outcomes survey, 2021/22

We also provide advice and resources for résumé/CV writing, applications, interview preparation and starting your own business.

Over 250 employers engage with our students through presentations, workshops and events every year. Our online portal advertises job vacancies and paid internships.

## **Industry insight**

Many courses in business, management, engineering, law and health sciences offer professional mentoring schemes, with mentors from across the globe. You could also have the chance to study in industry during your degree.

## **Enhance your degree**

Alongside your studies, you can work towards the optional Bristol PLUS Award, the University's employability award. This programme recognises your development through work experience, volunteering and extracurricular activities. The award is endorsed by a range of leading recruiters and is recorded on your degree transcript.

**11<sup>th</sup>**

in the UK for  
employment  
outcomes\*

**5<sup>th</sup>**

most targeted  
university by top  
UK employers\*\*



Find out more about Nura's journey  
[bristol.ac.uk/nura-story](https://bristol.ac.uk/nura-story)



'I founded Autism Independence to influence policies locally and nationally, ensuring the autism community has a voice.'

Bristol allowed me to be very innovative in my research, using my dissertation to focus on the stages of my son's development. I couldn't be more pleased to grow as an individual, but also to be a voice for so many.'

**Nura, Somalia**  
**Autism Independence charity founder**  
(MSc Psychology of Education graduate)

### Overseas experience

You can boost your career prospects by studying, working or volunteering abroad during your studies. Many undergraduate degrees allow you to spend a semester or a full year outside the UK. You could also take part in a shorter summer programme.

The Centre for Study Abroad team can help you find an opportunity that meets your goals. Visit [bristol.ac.uk/bristol-abroad](https://bristol.ac.uk/bristol-abroad) to explore your options.

### Become a future founder

Bristol actively encourages the innovators and entrepreneurs of the future. We can help you develop your entrepreneurial skills and pursue your start-up goals. The Basecamp Enterprise team provides guidance, workshops and support to help enhance your networks and build your growth mindset.

### Bristol for life: Your alumni connection

There are over 210,000 Bristol alumni living in over 190 countries around the world. When you join Bristol as a student, you can make the most of this incredible community, with access to alumni mentors working in your home country or your chosen career. When you graduate, your own alumni journey begins: from exclusive Bristol alumni events across the world, and opportunities to build your professional network, your Bristol alumni connection is for life. Visit [bristol.ac.uk/alumni](https://bristol.ac.uk/alumni) for more information.

# Supporting you

**We want you to make the most of your time at Bristol. Our student services are here to support all aspects of university life.**

## **Global Lounge**

The Global Lounge is a cultural hub at the heart of campus. It's a place for all students to connect, learn from each other and find out about global opportunities. Regular social events and activities celebrate different cultures and strengthen our diverse community. Find out what's on at [bristol.ac.uk/global-lounge](https://bristol.ac.uk/global-lounge)

## **A warm welcome**

Every September, our Global Lounge runs an exciting welcome programme focusing on international students. It's a great opportunity to meet other new students from both the UK and around the world, learn about British culture and get settled into Bristol.

## **Academic support**

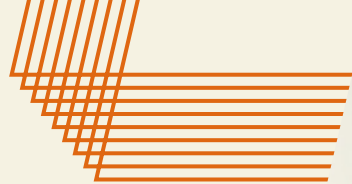
Most taught students will have a personal tutor. Your tutor will meet with you often, provide pastoral and academic support, and direct you to specialist services. Research students will receive similar support through their supervisor.

Our Study Skills service provides support to help you in your classes, with resources and sessions both in-person and online. Many degrees also offer subject-specific courses to develop your academic language and literacy. Try out our resources at [bristol.ac.uk/studyskills](https://bristol.ac.uk/studyskills)

## **Visas**

If you are not a British or Irish citizen, you will most likely need to apply for a visa to come to the UK to study.

Our dedicated Student Visas team can help you with your visa, both before you arrive and during your studies. They can also advise on the Graduate Route visa, which allows working after your studies. Our comprehensive webpages and friendly visa advisers can offer immigration information and professional, confidential advice. The latest guidance is available at [bristol.ac.uk/visas](https://bristol.ac.uk/visas)



'The support I've received has been invaluable. From teaching adjustments to alternative exam arrangements, it has allowed me to work at my best and proactively approach circumstances that may have hindered my academic performance.'

**Weiru, China**  
(MSci Physiological Sciences)



### **Disability Services and mental health support**

Our Disability Services team provides information and advice on support available at the University. The team supports students with long term health conditions, specific learning differences, ADHD, autism, mental health difficulties, and physical or sensory impairments. If you have any of these, we encourage you to let us know before you arrive. This is so that we can help you find information about the support available and how to access it. Find out more at [bristol.ac.uk/disability-services](https://bristol.ac.uk/disability-services)

### **Religion, faith and spirituality**

The Multifaith Chaplaincy is a welcoming space for students of all faiths and no faith. It offers pastoral and spiritual support, religious information and advice, and regular events. See [bristol.ac.uk/chaplaincy](https://bristol.ac.uk/chaplaincy)

### **Support if you have children**

We have a subsidised day nursery on the main campus, open during weekdays throughout the year. The nursery can accommodate children from three months to five years old. Visit [bristol.ac.uk/nursery](https://bristol.ac.uk/nursery)

### **Healthcare**

Most international students can access medical care through the National Health Service (NHS). The University has a full NHS doctors' practice, and there are other doctors' practices across Bristol. For more information, visit [bristol.ac.uk/students-health/international-students](https://bristol.ac.uk/students-health/international-students)

### **Wellbeing support**

If you need help with your wellbeing, we will help you find the support you need. All our support services are free and confidential. Find out more at [bristol.ac.uk/wellbeing](https://bristol.ac.uk/wellbeing)



### **University Mental Health Charter Award**

In 2022, Bristol became one of the first universities to receive this award, recognising our approach to improving mental health and wellbeing across the whole community.



Explore Bristol SU at  
[bristolsu.org.uk](http://bristolsu.org.uk)

# Societies and sport

**With more than 300 student groups for all interests, everyone can belong at Bristol.**

## **Led by students, for students**

Every student is a member of Bristol Students' Union. Bristol SU is led by student representatives elected by you, including an International Students' Officer, who campaign, advocate and ensure students remain at the heart of everything the University does. Bristol SU also offers confidential academic and housing advice as well as places to socialise and relax on campus.

## **Pursue your passions**

Bristol SU supports hundreds of student-run, interest-based clubs and societies. We've got everything from photography to baking and gardening to skydiving. There are more than 50 country-specific and religious societies – a great way to share your culture and feel closer to home.

Find your student group at  
[bristolsu.org.uk/groups](http://bristolsu.org.uk/groups)





‘Societies have allowed me to find my own community. They have given me the chance to take on leadership roles, develop important skills, be more active in the University and meet new people.’

**Renuk, Sri Lanka**  
(BSc Economics and Mathematics)



### Student events and activities

Bristol SU runs events throughout the year, starting from Welcome Week, for you to find friends and build your community. Karaoke, craft workshops, and trips to other UK sites and cities are just some of what you can look forward to.

### Volunteering

Volunteering is a great way to build confidence, develop your skills and make a positive impact in the community. It's easy to get involved and there's a huge range of opportunities, whether you want to commit your time regularly or take part in a one-off volunteering day. Choose a student-led project or work with charities and community groups across the city and beyond.

To find out more, visit  
[bristolsu.org.uk/volunteering](https://bristolsu.org.uk/volunteering)

### Sport, exercise and health

Bristol's excellent sport and fitness facilities can help you stay active and healthy. Facilities on campus include a two-floor gym, fitness class studios, double-sided sports hall and a 25-metre competition-length swimming pool. Just on the edge of the city, our Coombe Dingle Sports Complex features a large indoor tennis centre as well as outdoor courts and pitches for tennis, netball, lacrosse, hockey, rugby, football and more.

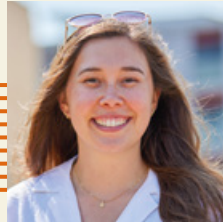
You can play sport socially or competitively, either by trying one of our free, inclusive social sport and fitness sessions (B:Active), or by joining one of 60 sports clubs supported by Bristol SU. Student athletes who play sport professionally can continue to develop alongside their studies with the support of our extensive Performance Sport programme.

For more information, visit [bristol.ac.uk/sport](https://bristol.ac.uk/sport)

# Student life



**At the University of Bristol, student life goes beyond the lecture hall. It's an exciting experience that blends academic excellence with a vibrant cultural and social scene. Hear from some of our international students about why they love life in Bristol.**



'Bristol is such a diverse and colourful city. There is always something going on – there is always a buzz! University staff have been so supportive and have really made my time at Bristol special. They go the extra mile to make sure I'm learning at my best and feel supported, especially being so far from home. I will always look back fondly on the memories I've made here.'

**Natasha, Canada**

(BVSc Veterinary Science: Accelerated Graduate Entry)



'Bristol's reputation as a delightful city to live in, with its rich history and vibrant culture, has made it an ideal environment for both my academic and personal growth. The lively city provides a thriving local community and numerous industry connections. Don't forget to check out the societies and activities that can make your student experience even more rewarding.'

**Yunyi, China**

(MSc by Research Population Health Sciences)

Find out why our international students love Bristol  
[bristol.ac.uk/lovebristol-video](http://bristol.ac.uk/lovebristol-video)



'Bristol is like a home away from home. What makes it special is that the people here are very warm-hearted. I still remember my first day: we asked a cab driver for directions, and he offered us a free ride and a tour of the city. I was so touched and this made a lasting impression on me. Since then, I've only met kinder people.'

**Khushi, India**

(MSc Finance and Investment)



'I chose to study at the University of Bristol because of the vibrant, dynamic student experience and campus life. It's a culturally rich city with a thriving arts scene, music festivals, and numerous social and recreational opportunities. The stimulating academic environment and exciting city life will make your university experience truly memorable.'

**Satiul, Indonesia**

(MA Comparative Literatures and Cultures)



'Bristol has a vibe like no other. It has a sense of calmness and peace about it – neither too busy nor too quiet. The different cultures in the city add more character and make it a very diverse place. Every day in Bristol brings me joy, whether I am at the University working on my studies, sitting by the harbourside eating ice cream, or enjoying the view of the breathtaking Clifton Suspension Bridge. Bristol has a soul that will be with you forever!'

**Gaurav, India**

(PhD Electrical and Electronic Engineering)



# Fees and costs

## Find out the costs of studying and living in Bristol.

### Tuition fees

Tuition fees will depend on your course and your fee status. You can find international tuition fees (including EU) for the academic year 2026/27 in the following table.

Fees are reviewed every year and are not fixed for the duration of your studies. You should budget for an annual increase of up to 8% (this does not apply to undergraduate courses in medicine, dentistry and veterinary science).

For the latest information about tuition fees, visit [bristol.ac.uk/tuition-fees](https://bristol.ac.uk/tuition-fees)

† To secure your place on a pre-sessional course, you will be required to pay your full tuition fee as a deposit. Pre-sessional fees are refundable in full within 14 days of original payment. After this period, no refunds will be made for students withdrawing from study.

### Foundation and pre-sessional programme fees

| Programme  | Annual tuition fee 2026/27 | Deposit |
|--|----------------------------|---------|
| International Foundation Programme <i>Arts and Humanities</i>                              | £26,900                    | £2,000  |
| International Foundation Programme <i>Dentistry</i>  | £28,000                    | £2,000  |
| International Foundation Programme <i>Science, Technology, Engineering and Mathematics</i> | £28,000                    | £2,000  |
| International Foundation Programme <i>Social Sciences and Law</i>                          | £26,900                    | £2,000  |
| Pre-sessional English language courses   | £3,610 – £5,910            | None†   |

### Undergraduate course fees

| Course                  | Annual tuition fee 2026/27 | Deposit |
|-------------------------|----------------------------|---------|
| Arts-based subjects     | £25,500 – £31,300          | None    |
| Science-based subjects  | £31,300 – £33,400          | None    |
| BDS Dentistry           | £49,700                    | None    |
| MB ChB Medicine         | £45,800                    | None    |
| BVSc Veterinary Science | £41,900                    | None    |

### Postgraduate programme fees

Tuition fees vary depending on degree. Search for your programme online at [bristol.ac.uk/postgraduate](https://bristol.ac.uk/postgraduate). A deposit of £2,000 may be required.

### Cost of living

You can live well in Bristol, with the cost of living (not including rent) 20% lower than London.\*

For advice about student living costs, visit [bristol.ac.uk/living-expenses](https://bristol.ac.uk/living-expenses)

| Grocery item                | Typical cost |
|-----------------------------|--------------|
| 1 litre of milk             | £1.18        |
| 1.5 litres of bottled water | £1.33        |
| 1kg of onions               | £1.33        |
| 1kg of bananas              | £1.23        |
| 1kg of white rice           | £1.38        |
| 1kg of potatoes             | £1.46        |
| 12 eggs                     | £3.02        |
| Cappuccino in a café        | £3.74        |
| Loaf of bread               | £1.75        |
| 1kg of cheese               | £8.95        |

\*numbeo.com, June 2025

# Think Big scholarships

Find out more about our scholarships  
[bristol.ac.uk/international-scholarships](https://bristol.ac.uk/international-scholarships)



**We have a range of scholarships that can help fund your studies, as well as exclusive development opportunities for scholars.**

## **Think Big at Bristol**

Our Think Big programme offers a range of scholarships for international students, including those from the EU.

Scholarships are available for eligible postgraduate master's programmes and undergraduate courses (excluding clinical courses).

In addition to financial support, you will be invited to take part in the Think Big Development Programme, to enhance both personal and professional growth.

## **Think Big Leadership**

This year-long initiative is designed to build your confidence, leadership, and future employability, giving you the springboard you need to excel in your chosen field. You'll take part in a series of workshops and activities alongside a global community of fellow scholars.

## **Think Big Career Accelerator**

Specifically created for master's scholars, this new career-focused programme runs alongside your academic studies to help you

prepare for life after graduation. You'll benefit from targeted support in areas such as CV writing, interview preparation, networking, and employer engagement. This also includes access to exclusive lectures, industry insights, and opportunities to connect with employer partners and Bristol alumni.

These opportunities are designed to ensure that you have a impactful experience during your time at Bristol - and beyond. In addition to financial support, you will be invited to take part in the Think Big Development Programme, where scholars are allocated tailored development opportunities to enhance both personal and professional growth.

# £5m

in scholarships for international students in 2026



'The Think Big Scholarship turned my dream into a reality. This scholarship has truly been a transformative experience, enabling me to advance my career.'

**Tinoula, Nigeria**  
(MSc International Development)

# How to apply

**We offer hundreds of courses and programmes across a range of levels. Find out more about our degrees and how to apply.**

## **Undergraduate courses**

We offer single honours and joint honours courses, so you can study one or two subjects during your bachelor's degree.

Most undergraduate courses take three years of full-time study. Some degrees include an extra year abroad or in industry. In many subjects you can choose a four-year course that leads to a master's degree. Dentistry, medicine and veterinary science degrees usually take five years.

Most applicants should apply through the Universities and Colleges Admissions Service (UCAS). Our UCAS institution code is BRISL B78. For more details and exceptions, see [bristol.ac.uk/international-ug-apply](https://bristol.ac.uk/international-ug-apply)

## **Postgraduate taught programmes**

Postgraduate taught programmes lead to a master's degree and usually take one year of full-time study. We also offer Postgraduate Diplomas and Certificates in some subjects. Apply using our online application form at [bristol.ac.uk/pg-apply](https://bristol.ac.uk/pg-apply)

## **Postgraduate research programmes**

A Doctor of Philosophy (PhD) is the most common research degree, usually taking three to four years of full-time study. We also offer one-year or two-year master's by research degrees, as well as professional doctorates for those who are already qualified to an advanced level.

You may need to propose your own area of study. You can find out what your research proposal should contain, and search for a potential supervisor, on our online course pages. We recommend emailing your chosen supervisor to discuss your proposal before applying. Apply using our online application form at [bristol.ac.uk/pg-apply](https://bristol.ac.uk/pg-apply)





### **International Foundation Programme**

Our one-year International Foundation Programme can be taken before starting an undergraduate degree. You will develop both your academic and language ability through tailored subject-specific pathways, which prepare you for the undergraduate degree of your choice.

International Foundation Programme applicants based in mainland China should apply through our China Office. Other applicants should apply through Kaplan International Pathways, our recruitment and admissions partner. Find out how at [bristol.ac.uk/ifp-apply](https://bristol.ac.uk/ifp-apply)

### **Pre-sessional courses**

A summer pre-sessional course will provide the academic communication skills you need to succeed. It can also help you meet the language requirements of your chosen programme. Find out more at [bristol.ac.uk/pre-sessional](https://bristol.ac.uk/pre-sessional)



### **Intercalated courses**

Current medical, dental and veterinary students can apply to intercalate at Bristol. You will complete an extra degree in an intensive year away from your normal studies. Find out more at [bristol.ac.uk/intercalate](https://bristol.ac.uk/intercalate)

# Entry requirements

**We accept a wide range of qualifications and assess every application on individual merit.**

## **International qualifications**

You can find detailed information about accepted international qualifications online. Find your country at [bristol.ac.uk/international/countries](https://bristol.ac.uk/international/countries)

For some courses, you need to have studied specific subjects or take an admissions test. These requirements are listed on our online course pages.

## **English language requirements**

International applicants need to have a good standard of English to study at Bristol. You can find the language requirements for each course on our online course listings.

You do not need to have the required English language profile before you apply. If you don't yet have the required qualifications, we will ask for these as part of your offer.

Find details of accepted qualifications at [bristol.ac.uk/study/language-requirements](https://bristol.ac.uk/study/language-requirements)

## **Education agents**

Bristol has agreements with various education representatives, or agents, around the world. Using an agent does not put you at an advantage or disadvantage when applying. Find a list of our approved and contracted agents in your country at [bristol.ac.uk/international/countries](https://bristol.ac.uk/international/countries)

## **Deadlines**

Check the deadline for your degree application on our online course pages.

Bear in mind that some scholarships will have their own application deadlines. You often need to apply for your chosen degree before you can apply for funding.

## **How we assess your application**

Our admissions statements contain important information about how we assess applications. We publish admissions statements for every course on the online course pages. Updated statements for 2026 entry will be available in summer 2025.



## **Offer types**

A conditional offer means you need to achieve specified grades to take up your place. This may include English language requirements. An unconditional offer means you have already met all the academic requirements.

## **Mature students**

A mature student is aged 21 or above when they start their undergraduate degree. We welcome applications from mature students and provide dedicated support. Find out about applying as a mature student at [bristol.ac.uk/mature](https://bristol.ac.uk/mature)

# Courses and programmes

## Pre-sessional courses

Search for a pre-sessional course at [bristol.ac.uk/pre-sessional](http://bristol.ac.uk/pre-sessional)

## International Foundation Programme

Find out more about an International Foundation Programme at [bristol.ac.uk/ifp](http://bristol.ac.uk/ifp)

| Programme  | Duration |
|--|----------|
| Arts and Humanities pathway                              | 1 year   |
| Dentistry pathway  | 1 year   |
| Science, Technology, Engineering and Mathematics pathway | 1 year   |
| Social Sciences and Law pathway                          | 1 year   |



## Intercalated degrees

Search for an intercalated degree at [bristol.ac.uk/intercalate](http://bristol.ac.uk/intercalate)

### Standalone courses

Child Health Research (BSc)

Clinical Sciences (BSc)

Digital Health (MSc)

Epidemiology (MSc)

Functional and Clinical Anatomy (BSc)

Global Health (BSc)

Global Wildlife Health and Conservation (MSc)

Health Economics and Health Policy Analysis (MSc)

Healthcare Ethics and Law (BSc)

Health, Law and Society (LLM)

Health Sciences Research (MRes)

Health Sciences Research (Renal) (MRes)

Health Sciences Research (Translational Cardiovascular Medicine) (MRes)

Medicine (MSc)

Medical Humanities (BA)

Nutrition, Physical Activity and Public Health (MSc)

Public Health (MSc)

Psychology (conversion course) (MSc)

Translational Cardiovascular Medicine (MSc)

Reproduction and Development (MSc)

### One-year entry onto three-year courses

Biochemistry with Medical Biochemistry (BSc)

Cancer Biology and Immunology (BSc)

Cellular and Molecular Medicine (BSc)

Childhood Studies (BSc)

Medical Microbiology (BSc)

Neuroscience (BSc)

Pharmacology (BSc)

Physiological Science (BSc)

Social Policy (BSc)

Virology and Immunology (BSc)

# Undergraduate courses



Search for an undergraduate course at [bristol.ac.uk/undergraduate](http://bristol.ac.uk/undergraduate)

† Entry by transfer

| Course  | UCAS code | Length  | Typical A-level offer | Typical IB offer |
|---|-----------|---------|-----------------------|------------------|
| <b>A</b>  |           |         |                       |                  |
| <b>Accounting and Finance</b>                             |           |         |                       |                  |
| BSc Accounting and Finance                                | NN43      | 3 years | AAA                   | 36               |
| BSc Accounting and Finance with Professional Placement    | †         | 4 years | AAA                   | 36               |
| BSc Accounting and Finance with Study Abroad              | NN46      | 4 years | AAA                   | 36               |
| BSc Accounting and Management                             | NN42      | 3 years | AAA                   | 36               |
| BSc Accounting and Management with Professional Placement | †         | 4 years | AAA                   | 36               |
| BSc Accounting and Management with Study Abroad           | NN45      | 4 years | AAA                   | 36               |
| BSc Economics and Accounting                              | LN14      | 3 years | AAA                   | 36               |
| BSc Economics and Accounting with Professional Placement  | †         | 4 years | AAA                   | 36               |
| BSc Economics and Accounting with Study Abroad            | LN16      | 4 years | AAA                   | 36               |
| BSc Economics and Finance                                 | LN13      | 3 years | AAA                   | 36               |
| BSc Economics and Finance with Study Abroad               | LN15      | 4 years | AAA                   | 36               |
| BSc Finance   | N300      | 3 years | AAA                   | 36               |

| Course   | UCAS code | Length  | Typical A-level offer | Typical IB offer |
|--|-----------|---------|-----------------------|------------------|
| <b>Aerospace Engineering</b>                       |           |         |                       |                  |
| BEng Aerospace Engineering                         | H405      | 3 years | A*AA                  | 38               |
| BEng Aerospace Engineering with a Year in Industry | †         | 4 years | A*AA                  | 38               |
| MEng Aerospace Engineering                         | H410      | 4 years | A*AA                  | 38               |
| MEng Aerospace Engineering with a Year in Industry | †         | 5 years | A*AA                  | 38               |
| MEng Aerospace Engineering with Study Abroad       | †         | 4 years | A*AA                  | 38               |
| <b>Ancient History</b>                             |           |         |                       |                  |
| BA Ancient History                                 | V110      | 3 years | AAB                   | 34               |
| <b>Anthropology and Archaeology</b>                |           |         |                       |                  |
| BA Anthropology                                    | XD49      | 3 years | AAB                   | 34               |
| BA Archaeology and Anthropology                    | VL46      | 3 years | AAB                   | 34               |
| MArts Anthropology with Innovation                 | XD50      | 4 years | AAB                   | 34               |
| <b>Applied Anatomy</b>                             |           |         |                       |                  |
| BSc Applied Anatomy                                | B112      | 3 years | ABB                   | 32               |
| MSci Applied Anatomy                               | B113      | 4 years | ABB                   | 32               |
| <b>Artificial Intelligence</b>                     |           |         |                       |                  |
| BEng Artificial Intelligence                       | G164      | 3 years | A*AA                  | 38               |

| Course   | UCAS code | Length  | Typical A-level offer | Typical IB offer |
|--|-----------|---------|-----------------------|------------------|
| <b>B</b>   |           |         |                       |                  |
| <b>Biochemistry</b>  |           |         |                       |                  |
| BSc Biochemistry   | C700      | 3 years | AAA                   | 36               |
| BSc Biochemistry with Medical Biochemistry                 | C720      | 3 years | AAA                   | 36               |
| BSc Biochemistry with Molecular Biology and Biotechnology  | C790      | 3 years | AAA                   | 36               |
| BSc Biochemistry with Study in Industry                    | †         | 4 years | AAA                   | 36               |
| MSci Biochemistry  | C701      | 4 years | AAA                   | 36               |
| MSci Biochemistry with Medical Biochemistry                | C721      | 4 years | AAA                   | 36               |
| MSci Biochemistry with Molecular Biology and Biotechnology | C791      | 4 years | AAA                   | 36               |
| <b>Biological Sciences</b>                                 |           |         |                       |                  |
| BSc Biology  | C100      | 3 years | AAA                   | 36               |
| BSc Biology with Professional Placement                    | †         | 4 years | AAA                   | 36               |
| BSc Plant Sciences   | C201      | 3 years | AAA                   | 36               |
| BSc Plant Sciences with Professional Placement             | †         | 4 years | AAA                   | 36               |
| BSc Zoology  | C300      | 3 years | AAA                   | 36               |
| BSc Zoology with Professional Placement                    | †         | 4 years | AAA                   | 36               |
| MSci Biology   | C103      | 4 years | AAA                   | 36               |
| MSci Biology with Professional Placement                   | †         | 5 years | AAA                   | 36               |
| MSci Plant Sciences  | C203      | 4 years | AAA                   | 36               |
| MSci Plant Sciences with Professional Placement            | †         | 5 years | AAA                   | 36               |
| MSci Zoology   | C303      | 4 years | AAA                   | 36               |
| MSci Zoology with Professional Placement                   | †         | 5 years | AAA                   | 36               |
| <b>Biomedical Sciences</b>                                 |           |         |                       |                  |
| BSc Biomedical Sciences                                    | B900      | 3 years | AAA                   | 36               |

| Course   | UCAS code | Length  | Typical A-level offer | Typical IB offer |
|--|-----------|---------|-----------------------|------------------|
| <b>Business and Management</b>                                     |           |         |                       |                  |
| BSc Accounting and Management                                      | NN42      | 3 years | AAA                   | 36               |
| BSc Accounting and Management with Professional Placement          | †         | 4 years | AAA                   | 36               |
| BSc Accounting and Management with Study Abroad                    | NN45      | 4 years | AAA                   | 36               |
| BSc Business Analytics   | N100      | 3 years | AAA                   | 36               |
| BSc Business and Management  | N200      | 3 years | AAA                   | 36               |
| BSc Business and Management with Study Abroad                      | N201      | 4 years | AAA                   | 36               |
| BSc Business and Management with Study Abroad in a Modern Language | 4H56      | 4 years | AAA                   | 36               |
| BSc Economics and Management                                       | LN12      | 3 years | AAA                   | 36               |
| BSc Economics and Management with Study Abroad                     | LN17      | 4 years | AAA                   | 36               |

## C

### Cellular and Molecular Medicine

|  |      |         |     |    |
|--|------|---------|-----|----|
| BSc Cancer Biology and Immunology                          | B131 | 3 years | AAB | 34 |
| BSc Cellular and Molecular Medicine                        | B130 | 3 years | AAB | 34 |
| BSc Cellular and Molecular Medicine with Study in Industry | †    | 4 years | AAB | 34 |
| BSc Medical Microbiology                                   | C521 | 3 years | AAB | 34 |
| BSc Medical Microbiology with Study in Industry            | †    | 4 years | AAB | 34 |
| BSc Virology and Immunology                                | C540 | 3 years | AAB | 34 |
| BSc Virology and Immunology with Study in Industry         | †    | 4 years | AAB | 34 |
| MSci Cancer Biology and Immunology                         | B132 | 4 years | AAB | 34 |
| MSci Cellular and Molecular Medicine                       | B133 | 4 years | AAB | 34 |
| MSci Medical Microbiology                                  | C522 | 4 years | AAB | 34 |
| MSci Virology and Immunology                               | C541 | 4 years | AAB | 34 |

| Course  | UCAS code | Length  | Typical A-level offer | Typical IB offer |
|---|-----------|---------|-----------------------|------------------|
| <b>Chemical Physics</b>                               |           |         |                       |                  |
| BSc Chemical Physics                                  | F320      | 3 years | AAA                   | 36               |
| MSci Chemical Physics                                 | F322      | 4 years | A*AA                  | 38               |
| MSci Chemical Physics with Industrial Experience      | F323      | 4 years | A*AA                  | 38               |
| <b>Chemistry</b>                                      |           |         |                       |                  |
| BSc Chemistry   | F100      | 3 years | AAA                   | 36               |
| MSci Chemistry  | F103      | 4 years | A*AA                  | 38               |
| MSci Chemistry with Industrial Experience             | F105      | 4 years | A*AA                  | 38               |
| MSci Chemistry with Study Abroad                      | F107      | 4 years | A*AA                  | 38               |
| MSci Chemistry with Study Abroad in a Modern Language | F104      | 4 years | A*AA                  | 38               |

### Chemistry with Computing

|                               |      |         |      |    |
|-------------------------------|------|---------|------|----|
| BSc Chemistry with Computing  | F130 | 3 years | AAA  | 36 |
| MSci Chemistry with Computing | F131 | 4 years | A*AA | 38 |

### Childhood Studies

|   |      |         |     |    |
|---|------|---------|-----|----|
| BSc Childhood Studies                   | L520 | 3 years | ABB | 32 |
| BSc Childhood Studies with Study Abroad | L525 | 4 years | ABB | 32 |

### Civil Engineering

|  |      |         |      |    |
|--|------|---------|------|----|
| BEng Civil Engineering                         | H205 | 3 years | A*AA | 38 |
| BEng Civil Engineering with a Year in Industry | †    | 4 years | A*AA | 38 |
| MEng Civil Engineering                         | H200 | 4 years | A*AA | 38 |
| MEng Civil Engineering with a Year in Industry | †    | 5 years | A*AA | 38 |
| MEng Civil Engineering with Study Abroad       | †    | 4 years | A*AA | 38 |

### Classical Studies

|                                  |      |         |     |    |
|----------------------------------|------|---------|-----|----|
| BA Classical Studies             | Q810 | 3 years | AAB | 34 |
| BA English and Classical Studies | QQ38 | 3 years | AAA | 36 |

### Classics

|             |      |         |     |    |
|-------------|------|---------|-----|----|
| BA Classics | Q800 | 3 years | AAB | 34 |
|-------------|------|---------|-----|----|

| Course   | UCAS code | Length  | Typical A-level offer | Typical IB offer |
|--|-----------|---------|-----------------------|------------------|
| <b>Comparative Literatures and Cultures</b>                          |           |         |                       |                  |
| BA Comparative Literatures and Cultures                              | Q200      | 3 years | AAB                   | 34               |
| BA Comparative Literatures and Cultures and Modern Languages         | QR21      | 4 years | ABB                   | 32               |
| <b>Computer Science</b>  |           |         |                       |                  |
| BSc Computer Science   | G400      | 3 years | A*AA                  | 38               |
| BSc Computer Science with Artificial Intelligence                    | G405      | 3 years | A*AA                  | 38               |
| BSc Mathematics and Computer Science                                 | GG14      | 3 years | A*A*A                 | 40               |
| MEng Computer Science  | G403      | 4 years | A*AA                  | 38               |
| MEng Computer Science with Artificial Intelligence                   | G406      | 4 years | A*AA                  | 38               |
| MEng Computer Science with Artificial Intelligence with Study Abroad | †         | 4 years |                       |                  |
| MEng Computer Science with Study Abroad                              | †         | 4 years | A*AA                  | 38               |
| MEng Computer Science with Innovation                                | G404      | 4 years | A*AA                  | 38               |
| MEng Mathematics and Computer Science                                | GG1K      | 4 years | A*A*A                 | 40               |
| <b>Criminology</b>   |           |         |                       |                  |
| BSc Criminology  | M900      | 3 years | AAB                   | 34               |
| BSc Criminology with Study Abroad                                    | M901      | 4 years | AAB                   | 34               |

## D

### Dentistry

|  |      |         |     |    |
|--|------|---------|-----|----|
| BDS Dentistry  | A206 | 5 years | AAA | 36 |
| BSc Cancer Biology and Immunology with Study in Industry | †    | 4 years | AAB | 34 |

| Course  | UCAS code | Length  | Typical A-level offer | Typical IB offer |
|---|-----------|---------|-----------------------|------------------|
| <b>Design Engineering</b>                       |           |         |                       |                  |
| BEng Design Engineering                         | H105      | 3 years | A*AA                  | 38               |
| BEng Design Engineering with a Year in Industry | †         | 4 years | A*AA                  | 38               |
| MEng Design Engineering                         | H100      | 4 years | A*AA                  | 38               |
| MEng Design Engineering with a Year in Industry | †         | 5 years | A*AA                  | 38               |

## E

| Course   | UCAS code | Length  | Typical A-level offer | Typical IB offer |
|--|-----------|---------|-----------------------|------------------|
| <b>Economics</b>   |           |         |                       |                  |
| BA Economics   | L150      | 3 years | A*AA                  | 38               |
| BSc Economics  | L100      | 3 years | A*AA                  | 38               |
| BSc Economics and Accounting                             | LN14      | 3 years | AAA                   | 36               |
| BSc Economics and Accounting with Professional Placement | †         | 4 years | AAA                   | 36               |
| BSc Economics and Accounting with Study Abroad           | LN16      | 4 years | AAA                   | 36               |
| BSc Economics with Data Science                          | L1G1      | 3 years | A*AA                  | 38               |
| BSc Economics and Econometrics                           | L140      | 3 years | A*AA                  | 38               |
| BSc Economics and Econometrics with Study Abroad         | L142      | 4 years | A*AA                  | 38               |
| BSc Economics and Finance                                | LN13      | 3 years | AAA                   | 36               |
| BSc Economics and Finance with Study Abroad              | LN15      | 4 years | AAA                   | 36               |
| BSc Economics and Management                             | LN12      | 3 years | AAA                   | 36               |
| BSc Economics and Management with Study Abroad           | LN17      | 4 years | AAA                   | 36               |
| BSc Economics and Mathematics                            | LG11      | 3 years | A*A*A                 | 40               |
| BSc Economics and Politics                               | LL12      | 3 years | AAA                   | 36               |
| BSc Economics and Politics with Study Abroad             | LL14      | 4 years | AAA                   | 36               |
| BSc Economics with Study Abroad                          | L105      | 4 years | A*AA                  | 38               |
| BSc Economics with Study Abroad in a Modern Language     | L101      | 4 years | A*AA                  | 38               |
| BSc Philosophy and Economics                             | VL51      | 3 years | AAA                   | 36               |

| Course   | UCAS code | Length  | Typical A-level offer | Typical IB offer |
|--|-----------|---------|-----------------------|------------------|
| BSc Philosophy and Economics with Study Abroad | VL54      | 4 years | AAA                   | 36               |
| MSci Economics with Innovation                 | L104      | 4 years | A*AA                  | 38               |
| <b>Education</b>                               |           |         |                       |                  |
| BSc Education Studies                          | X300      | 3 years | ABB                   | 32               |
| BSc Education Studies with Study Abroad        | X304      | 4 years | ABB                   | 32               |
| BSc Psychology in Education                    | X301      | 3 years | ABB                   | 32               |
| BSc Psychology in Education with Study Abroad  | X305      | 4 years | ABB                   | 32               |

| Course   | UCAS code | Length  | Typical A-level offer | Typical IB offer |
|--|-----------|---------|-----------------------|------------------|
| <b>Electrical and Electronic Engineering</b>                       |           |         |                       |                  |
| BEng Electrical and Electronic Engineering                         | H600      | 3 years | AAA                   | 36               |
| BEng Electrical and Electronic Engineering with a Year in Industry | †         | 4 years | AAA                   | 36               |
| BEng Mechanical and Electrical Engineering                         | H361      | 3 years | AAA                   | 36               |
| BEng Mechanical and Electrical Engineering with a Year in Industry | †         | 4 years | AAA                   | 36               |
| MEng Electrical and Electronic Engineering                         | H606      | 4 years | AAA                   | 36               |
| MEng Electrical and Electronic Engineering with a Year in Industry | †         | 5 years | AAA                   | 36               |
| MEng Electrical and Electronic Engineering with Study Abroad       | †         | 4 years | AAA                   | 36               |
| MEng Mechanical and Electrical Engineering                         | H360      | 4 years | AAA                   | 36               |
| MEng Mechanical and Electrical Engineering with a Year in Industry | †         | 5 years | AAA                   | 36               |

| Course   | UCAS code | Length  | Typical A-level offer | Typical IB offer |
|--|-----------|---------|-----------------------|------------------|
| <b>Engineering Mathematics</b>                       |           |         |                       |                  |
| BEng Engineering Mathematics                         | G162      | 3 years | AAA                   | 36               |
| BEng Engineering Mathematics with a Year in Industry | †         | 4 years | AAA                   | 36               |
| MEng Engineering Mathematics                         | G161      | 4 years | AAA                   | 36               |
| MEng Engineering Mathematics with a Year in Industry | †         | 5 years | AAA                   | 36               |
| MEng Engineering Mathematics with Study Abroad       | G160      | 4 years | AAA                   | 36               |

| Course                           | UCAS code | Length  | Typical A-level offer | Typical IB offer |
|----------------------------------|-----------|---------|-----------------------|------------------|
| <b>English</b>                   |           |         |                       |                  |
| BA English                       | Q300      | 3 years | AAA                   | 36               |
| BA English with Study Abroad     | Q301      | 4 years | AAA                   | 36               |
| BA English and Classical Studies | QQ38      | 3 years | AAA                   | 36               |
| BA English and Modern Languages  | QV31      | 3 years | AAA                   | 36               |
| BA English and Philosophy        | QV35      | 3 years | AAA                   | 36               |
| BA Film and English              | 6T3X      | 3 years | AAA                   | 36               |
| BA Theatre and English           | 4CC8      | 3 years | AAA                   | 36               |

| Course  | UCAS code | Length  | Typical A-level offer | Typical IB offer |
|---|-----------|---------|-----------------------|------------------|
| <b>Environmental Geoscience</b>                 |           |         |                       |                  |
| BSc Environmental Geoscience                    | F640      | 3 years | ABB                   | 32               |
| MSci Environmental Geoscience                   | F641      | 4 years | ABB                   | 32               |
| MSci Environmental Geoscience with Study Abroad | F644      | 4 years | ABB                   | 32               |

## F

| Course                                    | UCAS code | Length  | Typical A-level offer | Typical IB offer |
|---|-----------|---------|-----------------------|------------------|
| <b>Film and Television</b>                |           |         |                       |                  |
| BA Film and English                       | 6T3X      | 3 years | AAA                   | 36               |
| BA Film and Modern Languages              | WR50      | 4 years | AAB                   | 34               |
| BA Film and Television                    | 4M5N      | 3 years | AAB                   | 34               |
| MArts Film and Television with Innovation | 4M50      | 4 years | AAB                   | 34               |
| BA Theatre and Film                       | 4KDU      | 3 years | AAB                   | 34               |

| Course              | UCAS code | Length  | Typical A-level offer | Typical IB offer |
|---------------------|-----------|---------|-----------------------|------------------|
| <b>French</b>       |           |         |                       |                  |
| BA Modern Languages | R900      | 4 years | ABB                   | 32               |

## G

| Course   | UCAS code | Length  | Typical A-level offer | Typical IB offer |
|--|-----------|---------|-----------------------|------------------|
| <b>Geography</b>                                     |           |         |                       |                  |
| BSc Geography  | F800      | 3 years | AAA                   | 36               |
| BSc Geography with Study Abroad                      | 09F4      | 4 years | AAA                   | 36               |
| BSc Geography with Study Abroad in a Modern Language | F801      | 4 years | AAA                   | 36               |
| MSci Geography with Innovation                       | F805      | 4 years | AAA                   | 36               |

| Course                        | UCAS code | Length  | Typical A-level offer | Typical IB offer |
|-------------------------------|-----------|---------|-----------------------|------------------|
| <b>Geology</b>                |           |         |                       |                  |
| BSc Geology                   | F600      | 3 years | ABB                   | 32               |
| MSc Geology                   | F603      | 4 years | ABB                   | 32               |
| MSc Geology with Study Abroad | F609      | 4 years | ABB                   | 32               |
| <b>German</b>                 |           |         |                       |                  |
| BA Modern Languages           | R900      | 4 years | ABB                   | 32               |

## H

| Course                          | UCAS code | Length  | Typical A-level offer | Typical IB offer |
|---------------------------------|-----------|---------|-----------------------|------------------|
| <b>History</b>                  |           |         |                       |                  |
| BA English and History          | QV31      | 3 years | AAA                   | 36               |
| BA History                      | V100      | 3 years | AAA                   | 36               |
| BA History with Study Abroad    | V102      | 4 years | AAA                   | 36               |
| BA History and Modern Languages | VR10      | 4 years | AAA                   | 36               |
| MArts History with Innovation   | V104      | 4 years | AAA                   | 36               |

### History of Art

|  |      |         |     |    |
|--|------|---------|-----|----|
| BA History of Art                      | V350 | 3 years | ABB | 32 |
| BA History of Art and Modern Languages | VR30 | 4 years | ABB | 32 |

## I

### Innovation

|   |      |         |      |    |
|---|------|---------|------|----|
| MArts Anthropology with Innovation        | XD50 | 4 years | AAB  | 34 |
| MSc Design with Innovation                | J100 | 4 years | AAB  | 36 |
| MArts Film and Television with Innovation | 4M50 | 4 years | AAB  | 34 |
| MArts History with Innovation             | V104 | 4 years | AAA  | 36 |
| MArts Music with Innovation               | W304 | 4 years | AAB  | 34 |
| MArts Theatre with Innovation             | 2Q50 | 4 years | AAB  | 34 |
| MEng Computer Science with Innovation     | G404 | 4 years | A*AA | 38 |
| MSc Accounting with Innovation            | NN50 | 4 years | AAA  | 36 |

| Course                                      | UCAS code | Length  | Typical A-level offer | Typical IB offer |
|---|-----------|---------|-----------------------|------------------|
| MSc Economics with Innovation               | L104      | 4 years | A*AA                  | 38               |
| MSc Finance with Innovation                 | N305      | 4 years | AAA                   | 36               |
| MSc Geography with Innovation               | F805      | 4 years | AAA                   | 36               |
| MSc Business and Management with Innovation | N204      | 4 years | AAA                   | 36               |
| MSc Physics with Innovation                 | F306      | 4 years | A*AA                  | 38               |
| MSc Psychology with Innovation              | C804      | 4 years | A*AA                  | 38               |

### International Business Management

|  |      |         |     |    |
|--|------|---------|-----|----|
| BSc International Business Management  | N120 | 3 years | AAA | 36 |
| BSc International Business Management with Study Abroad                      | N121 | 4 years | AAA | 36 |
| BSc International Business Management with Study Abroad in a Modern Language | N122 | 4 years | AAA | 36 |
| BA International Business Management with Modern Languages                   | NR10 | 4 years | AAA | 36 |

### Italian

|                     |      |         |     |    |
|---------------------|------|---------|-----|----|
| BA Modern Languages | R900 | 4 years | ABB | 32 |
|---------------------|------|---------|-----|----|

## L

### Law

|  |      |         |      |    |
|--|------|---------|------|----|
| LLB Law                                  | M100 | 3 years | A*AA | 38 |
| LLB Law and Modern Languages             | MR20 | 4 years | A*AA | 38 |
| LLB Law with Study Abroad                | †    | 4 years | A*AA | 38 |
| LLB Law with Study in Continental Europe | †    | 4 years | A*AA | 38 |

### Liberal Arts

|   |      |         |     |    |
|---|------|---------|-----|----|
| BA Liberal Arts                         | 2ZB7 | 3 years | AAA | 36 |
| MLibArts Liberal Arts with Study Abroad | 2T23 | 4 years | AAA | 36 |

| Course | UCAS code | Length | Typical A-level offer | Typical IB offer |
|--------|-----------|--------|-----------------------|------------------|
|--------|-----------|--------|-----------------------|------------------|

## M

### Marketing

|  |      |         |     |    |
|--|------|---------|-----|----|
| BSc Marketing  | N500 | 3 years | AAA | 36 |
| BSc Marketing with Study Abroad                      | N504 | 4 years | AAA | 36 |
| BSc Marketing with Study Abroad in a Modern Language | N501 | 4 years | AAA | 36 |

### Mathematics

|  |      |         |       |    |
|--|------|---------|-------|----|
| BSc Data Science                                       | G1G5 | 3 years | A*AA  | 38 |
| BSc Data Science with a Year in Industry               | G1G6 | 4 years | A*AA  | 38 |
| BSc Economics and Mathematics                          | LG11 | 3 years | A*A*A | 40 |
| BSc Mathematics  | G100 | 3 years | A*A*A | 40 |
| BSc Mathematics and Computer Science                   | GG14 | 3 years | A*A*A | 40 |
| BSc Mathematics and Philosophy                         | VG51 | 3 years | A*AA  | 38 |
| BSc Mathematics and Physics                            | GFD3 | 3 years | A*A*A | 40 |
| BSc Mathematics with Statistics                        | G1G3 | 3 years | A*A*A | 40 |
| BSc Mathematics with Statistics for Finance            | G1G4 | 3 years | A*A*A | 40 |
| BSc Mathematics with Study Abroad in a Modern Language | G101 | 4 years | A*A*A | 40 |
| MEng Mathematics and Computer Science                  | GG1K | 4 years | A*A*A | 40 |
| MSc Mathematics  | G103 | 4 years | A*A*A | 40 |
| MSc Mathematics and Philosophy                         | GV15 | 4 years | A*AA  | 38 |
| MSc Mathematics and Physics                            | GFC3 | 4 years | A*A*A | 40 |
| MSc Mathematics with Statistics                        | G1GH | 4 years | A*A*A | 40 |
| MSc Mathematics with Study Abroad                      | G105 | 4 years | A*A*A | 40 |
| MSc Mathematics with Study Abroad in a Modern Language | G104 | 4 years | A*A*A | 40 |

### Mechanical Engineering

|                             |      |         |      |    |
|-----------------------------|------|---------|------|----|
| BEng Mechanical Engineering | H305 | 3 years | A*AA | 38 |
|-----------------------------|------|---------|------|----|

| Course   | UCAS code | Length  | Typical A-level offer | Typical IB offer |
|--|-----------|---------|-----------------------|------------------|
| BEng Mechanical Engineering with a Year in Industry                | †         | 4 years | A*AA                  |                  |
| BEng Mechanical and Electrical Engineering                         | H361      | 3 years | AAA                   | 36               |
| MEng Mechanical Engineering  | H300      | 4 years | A*AA                  | 38               |
| MEng Mechanical Engineering with Study Abroad                      | †         | 4 years | A*AA                  | 38               |
| MEng Mechanical Engineering with a Year in Industry                | †         | 5 years | A*AA                  | 38               |
| MEng Mechanical and Electrical Engineering                         | H360      | 4 years | AAA                   | 36               |
| MEng Mechanical and Electrical Engineering with a Year in Industry | †         | 5 years | AAA                   | 36               |
| <b>Medicine</b>  |           |         |                       |                  |
| MB ChB Medicine  | A100      | 5 years | AAA                   | 36               |
| <b>Modern Languages</b>  |           |         |                       |                  |
| BA Modern Languages  | R900      | 4 years | ABB                   | 32               |
| <b>Music</b>   |           |         |                       |                  |
| BA Music   | W300      | 3 years | AAB                   | 34               |
| BA Music and Modern Languages                                      | WR20      | 4 years | AAB                   | 34               |
| MArts Music with Innovation  | W304      | 4 years | AAB                   | 34               |

## N

### Neuroscience

|   |      |         |      |    |
|---|------|---------|------|----|
| BSc Neuroscience                        | B140 | 3 years | AAA  | 36 |
| BSc Neuroscience with Study in Industry | †    | 4 years | AAA  | 36 |
| MSci Neuroscience                       | B141 | 4 years | AAA  | 36 |
| MSci Psychology and Neuroscience        | CB81 | 4 years | A*AA | 38 |

## P

### Palaeontology and Evolution

|                                 |      |         |     |    |
|---------------------------------|------|---------|-----|----|
| BSc Palaeontology and Evolution | CF17 | 3 years | ABB | 32 |
|---------------------------------|------|---------|-----|----|

| Course  | UCAS code | Length  | Typical A-level offer | Typical IB offer |
|---|-----------|---------|-----------------------|------------------|
| MSci Palaeontology and Evolution                    | CF16      | 4 years | ABB                   | 32               |
| <b>Pharmacology</b>                                 |           |         |                       |                  |
| BSc Pharmacology                                    | B210      | 3 years | AAB                   | 34               |
| BSc Pharmacology with Study in Industry             | B211      | 4 years | AAB                   | 34               |
| MSci Pharmacology                                   | B212      | 4 years | AAB                   | 34               |
| <b>Philosophy</b>                                   |           |         |                       |                  |
| BA English and Philosophy                           | QV35      | 3 years | AAA                   | 36               |
| BA Philosophy                                       | V500      | 3 years | AAA                   | 36               |
| BA Philosophy and Modern Languages                  | RV50      | 4 years | AAB                   | 34               |
| BA Philosophy and Theology                          | VV56      | 3 years | AAA                   | 36               |
| BSc Mathematics and Philosophy                      | VG51      | 3 years | A*AA                  | 38               |
| BSc Philosophy and Politics                         | VL52      | 3 years | AAA                   | 36               |
| BSc Physics and Philosophy                          | FV35      | 3 years | A*AA                  | 38               |
| BSc Sociology and Philosophy                        | LV35      | 3 years | AAB                   | 34               |
| MSci Mathematics and Philosophy                     | GV15      | 4 years | A*AA                  | 38               |
| MSci Physics and Philosophy                         | FVH5      | 4 years | A*AA                  | 38               |
| <b>Physics</b>                                      |           |         |                       |                  |
| BSc Mathematics and Physics                         | GFD3      | 3 years | A*A*A                 | 40               |
| BSc Physics   | F300      | 3 years | A*AA                  | 38               |
| BSc Physics and Philosophy                          | FV35      | 3 years | A*AA                  | 38               |
| BSc Physics with Astrophysics                       | F3F5      | 3 years | A*AA                  | 38               |
| MSci Mathematics and Physics                        | GFC3      | 4 years | A*A*A                 | 40               |
| MSci Physics  | F303      | 4 years | A*AA                  | 38               |
| MSci Physics and Philosophy                         | FVH5      | 4 years | A*AA                  | 38               |
| MSci Physics with Astrophysics                      | F3FM      | 4 years | A*AA                  | 38               |
| MSci Physics with Industrial Experience             | F305      | 4 years | A*AA                  | 38               |
| MSci Physics with Innovation                        | F306      | 4 years | A*AA                  | 38               |
| MSci Physics with International Experience          | F307      | 4 years | A*AA                  | 38               |
| MSci Physics with Study Abroad in a Modern Language | F304      | 4 years | A*AA                  | 38               |
| MSci Theoretical Physics                            | F340      | 4 years | A*AA                  | 38               |

| Course   | UCAS code | Length  | Typical A-level offer | Typical IB offer |
|--|-----------|---------|-----------------------|------------------|
| <b>Physics with Computing</b>                              |           |         |                       |                  |
| BSc Physics with Computing                                 | F330      | 3 years | A*AA                  | 38               |
| MSci Physics with Computing                                | F331      | 4 years | A*AA                  | 38               |
| MSci Physics with Computing with Industrial Experience     | F334      | 4 years | A*AA                  | 38               |
| <b>Physiological Science</b>                               |           |         |                       |                  |
| BSc Physiological Science                                  | B120      | 3 years | AAB                   | 34               |
| BSc Physiological Science with Study in Industry           | †         | 4 years | AAB                   | 34               |
| MSci Physiological Science                                 | B122      | †       | AAB                   | 34               |
| <b>Politics and International Relations</b>                |           |         |                       |                  |
| BA Politics and Modern Languages                           | RL20      | 4 years | AAB                   | 34               |
| BSc Economics and Politics                                 | LL12      | 3 years | AAA                   | 36               |
| BSc Economics and Politics with Study Abroad               | LL14      | 4 years | AAA                   | 36               |
| BSc Philosophy and Politics                                | VL52      | 3 years | AAA                   | 36               |
| BSc Politics and International Relations                   | L200      | 3 years | AAA                   | 36               |
| BSc Politics and International Relations with Study Abroad | L201      | 4 years | AAA                   | 36               |
| BSc Politics and Sociology                                 | LL23      | 3 years | AAB                   | 34               |
| BSc Social Policy and Politics                             | LL42      | 3 years | AAB                   | 34               |
| <b>Psychology</b>  |           |         |                       |                  |
| BSc Psychology   | C801      | 3 years | A*AA                  | 38               |
| MSci Psychology with Innovation                            | C804      | 4 years | A*AA                  | 38               |
| MSci Psychology and Neuroscience                           | CB81      | 4 years | A*AA                  | 38               |
| <b>R</b>   |           |         |                       |                  |
| <b>Religion and Theology</b>                               |           |         |                       |                  |
| BA Philosophy and Theology                                 | VV56      | 3 years | AAA                   | 36               |
| BA Religion and Theology                                   | V600      | 3 years | ABB                   | 32               |
| MArts Religion and Theology with Study Abroad              | V601      | 4 years | ABB                   | 32               |

| Course | UCAS code | Length | Typical A-level offer | Typical IB offer |
|--------|-----------|--------|-----------------------|------------------|
|--------|-----------|--------|-----------------------|------------------|

## S

### Social Policy

|  |      |         |     |    |
|--|------|---------|-----|----|
| BSc International Social and Public Policy                   | L410 | 3 years | AAB | 34 |
| BSc International Social and Public Policy with Study Abroad | L411 | 4 years | AAB | 34 |
| BSc Social Policy  | L400 | 3 years | AAB | 34 |
| BSc Social Policy with Study Abroad                          | L404 | 4 years | AAB | 34 |

### Sociology

|                                 |      |         |     |    |
|---------------------------------|------|---------|-----|----|
| BSc Politics and Sociology      | LL23 | 3 years | AAB | 34 |
| BSc Social Policy and Sociology | LL43 | 3 years | AAB | 34 |
| BSc Sociology                   | L300 | 3 years | AAB | 34 |
| BSc Sociology and Philosophy    | LV35 | 3 years | AAB | 34 |
| BSc Sociology with Study Abroad | L301 | 4 years | AAB | 34 |

### Theatre

|                                    |      |         |     |    |
|------------------------------------|------|---------|-----|----|
| BA Theatre and English             | 4CC8 | 3 years | AAA | 36 |
| BA Theatre and Film                | 4KDU | 3 years | AAB | 34 |
| BA Theatre and Performance Studies | 2Q3W | 3 years | AAB | 34 |
| BA Theatre and Modern Languages    | WR40 | 4 years | AAB | 34 |
| MArts Theatre with Innovation      | 2Q50 | 4 years | AAB | 34 |

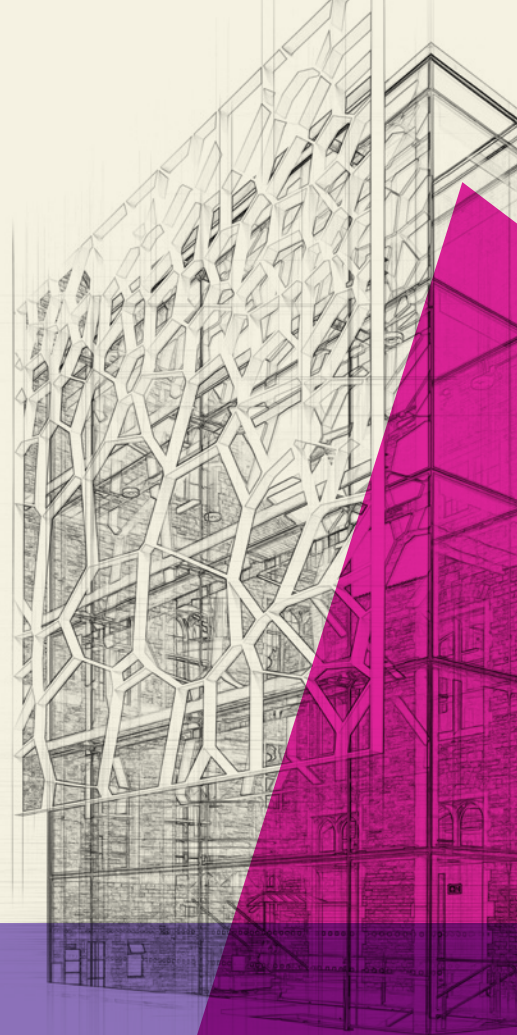
## V

### Veterinary Nursing

|   |      |         |     |    |
|---|------|---------|-----|----|
| BSc Veterinary Nursing and Companion Animal Behaviour | D313 | 4 years | BBC | 29 |
|---|------|---------|-----|----|

### Veterinary Science

|   |      |         |            |    |
|---|------|---------|------------|----|
| BVSc Veterinary Science                             | D100 | 5 years | AAA        | 36 |
| BVSc Veterinary Science: Accelerated Graduate Entry | D102 | 4 years | See online |    |



# Postgraduate taught programmes



Search for a postgraduate taught programme at [bristol.ac.uk/postgraduate](https://bristol.ac.uk/postgraduate)

| Programme                                       | Award(s)  |
|---|-----------|
| <b>Faculty of Arts, Law and Social Sciences</b> |           |
| Anthropology                                    | MA        |
| Business Innovation and Entrepreneurship        | MSc       |
| Chinese-English Translation                     | MA        |
| Comparative Literatures and Cultures            | MA        |
| Composition of Music for Film and Television    | MA        |
| Conflict Resolution and Peacebuilding           | MSc       |
| Creative Innovation and Entrepreneurship        | MA        |
| Creative Writing                                | MA        |
| Cultural Heritage                               | MSc       |
| Development and Security                        | MSc       |
| Digital and Technological Society               | MSc       |
| Digital Business Innovation                     | MA        |
| Digital Media Innovation                        | MA        |
| East Asian Development and the Global Economy   | MSc       |
| Economics                                       | MSc, MRes |
| Economics and Finance                           | MSc       |
| Economics, Finance and Management               | MSc       |
| Economics with Data Science                     | MSc       |

| Programme  | Award(s)          |
|--|-------------------|
| Education  | MRes              |
| Education (Inclusive Education)                  | MSc               |
| Education (Leadership and Policy)                | MSc               |
| Education (Learning, Technology and Society)     | MSc               |
| Education (Mathematics Education)                | MSc               |
| Education (Neuroscience and Education)           | MSc               |
| Education (Open Pathway)                         | MSc               |
| Education (Policy and International Development) | MSc               |
| Education (Secondary)                            | PGCE              |
| Education (Teaching and Learning)                | MSc               |
| English Literature                               | MA                |
| English with Black Humanities                    | MA                |
| Environmental Humanities                         | MA                |
| Film and Television                              | MA                |
| Games Design (Narrative)                         | MA                |
| Gender and International Relations               | MSc               |
| Global Health Policy                             | MSc               |
| History  | MA                |
| History with Black Humanities                    | MA                |
| Immersive Arts (Virtual and Augmented Reality)   | MA, PGCert, PGDip |
| Innovation and Entrepreneurship                  | MSc               |

| Programme                                      | Award(s)           |
|--|--------------------|
| International Development                      | MSc                |
| International Relations                        | MSc                |
| International Security                         | MSc                |
| Interpreting                                   | MSc                |
| Law  | MA                 |
| Law (Banking and Finance Law)                  | LLM                |
| Law (Commercial Law)                           | LLM                |
| Law (Company Law and Corporate Governance)     | LLM                |
| Law (General Legal Studies)                    | LLM                |
| Law (Health, Law and Society)                  | LLM                |
| Law (Human Rights Law)                         | LLM                |
| Law (International Commercial Law)             | LLM                |
| Law (International Law)                        | LLM                |
| Law (Environment, Sustainability and Business) | LLM                |
| Law (Innovation and Technology)                | LLM                |
| Leading Strategic Change                       | MSc, PGCert, PGDip |
| Medieval Studies                               | MA, PGCert         |
| Music  | MA                 |
| Nutrition, Physical Activity and Public Health | MSc                |
| Philosophy                                     | MA                 |
| Psychology of Education BPS                    | MSc                |

| Programme  | Award(s)   |
|--|------------|
| Public Policy  | MSc        |
| Social and Cultural Theory   | MSc        |
| Social Innovation and Entrepreneurship                                 | MSc        |
| Social Science Research Methods (Global Challenges and Transformation) | MSc        |
| Social Science Research Methods (Politics)                             | MSc        |
| Social Science Research Methods (Sociology)                            | MSc        |
| Social Work  | MSc        |
| Society, Politics and Climate Change                                   | MSc        |
| Socio-Legal Studies  | MSc        |
| Sociology  | MSc        |
| Teaching English to Speakers of Other Languages (TESOL)                | MSc        |
| Technology Innovation and Entrepreneurship                             | MSc        |
| Translation and Intercultural Studies                                  | MA         |
| User Experience Design and Innovation                                  | MA         |
| <b>Faculty of Health and Life Sciences</b>                             |            |
| Applied Neuropsychology  | MSc, PGDip |
| Applied Neuropsychology (Online)                                       | MSc, PGDip |

| Programme  | Award(s)           |
|--|--------------------|
| Bioinformatics                                     | MSc                |
| Biomedical Sciences Research                       | MSc                |
| Cardiovascular Perfusion (Online)                  | MSc                |
| Clinical Conscious Sedation and Anxiety Management | PGCert             |
| Clinical Neuropsychology                           | MSc, PGDip         |
| Clinical Neuropsychology Practice                  | PGCert             |
| Clinical Oral Surgery                              | PGCert             |
| Clinical Perfusion Science                         | MSc, PGCert        |
| Dental Implantology                                | MSc                |
| Epidemiology                                       | MSc                |
| Global Wildlife Health and Conservation            | MSc                |
| Health Economics and Health Policy Analysis        | MSc, PGCert, PGDip |
| Healthcare Management (Online)                     | MSc, PGCert, PGDip |
| Health Professions Education                       | MSc, PGCert, PGDip |
| Health Professions Education (Online)              | MSc                |
| Health Sciences Research                           | MRes               |
| Medical Statistics and Health Data Science         | MSc                |
| Mental Health Science                              | MSc                |
| Molecular Neuroscience                             | MSc                |
| Oral Medicine                                      | MSc                |
| Psychology (Conversion)                            | MSc                |
| Public Health                                      | MSc                |
| Reproduction and Development                       | MSc, PGCert, PGDip |
| Science Communication for a Better Planet          | MSc                |
| Stem Cells and Regeneration (Online)               | MSc, PGCert, PGDip |
| Theoretical and Practical Clinical Neuropsychology | PGDip              |

| Programme  | Award(s)           |
|--|--------------------|
| Translational Cardiovascular Medicine                | MSc, PGCert, PGDip |
| Translational Cardiovascular Medicine (Online)       | MSc, PGCert, PGDip |
| <b>Faculty of Science and Engineering</b>            |                    |
| Artificial Intelligence                              | MSc                |
| Advanced Microelectronic Systems Engineering         | MSc                |
| Aerial Robotics                                      | MSc                |
| Aerospace Engineering                                | MSc                |
| Biorobotics  | MSc                |
| Climate Change Science and Policy                    | MSc                |
| Communication Networks and Signal Processing         | MSc                |
| Composites Engineering                               | MSc                |
| Computer Science (Conversion)                        | MSc                |
| Cyber Security (Infrastructures Security)            | MSc                |
| Cyber Security (Software Security)                   | MSc                |
| Data Science   | MSc                |
| Data Science (Online)                                | MSc                |
| Digital Health                                       | MSc                |
| Earthquake Engineering and Infrastructure Resilience | MSc                |
| Engineering Mathematics                              | MSc                |
| Engineering with Management                          | MSc                |
| Environmental Analytical Chemistry                   | MSc                |
| Environmental Modelling and Data Analysis            | MSc                |
| Environmental Policy and Management                  | MSc                |
| Financial Technology with Data Science               | MSc                |
| Geographic Data Science and Spatial Analytics        | MSc                |

| Programme  | Award(s)           |
|--|--------------------|
| Global Development and Environment                     | MSc                |
| Human Geography: Society and Space                     | MSc                |
| Human-Computer Interaction (Online)                    | MSc, PGCert, PGDip |
| Immersive Technologies (Virtual and Augmented Reality) | MSc, PGCert, PGDip |
| Internet of Things with AI                             | MSc                |
| Mathematical Sciences                                  | MSc                |
| Nuclear Science and Engineering                        | MSc                |
| Optical Communications and Signal Processing           | MSc                |
| Optoelectronic and Quantum Technologies                | MSc                |
| Palaeobiology  | MSc                |
| Robotics   | MSc                |
| Scientific Computing with Data Science                 | MSc                |
| Structural Engineering                                 | MSc                |
| Sustainable Engineering                                | MSc                |
| Water and Environmental Management                     | MSc                |
| Wireless Communications and Signal Processing          | MSc                |
| <b>Business School Programmes</b>                      |                    |
| Accounting and Finance                                 | MSc                |
| Accounting, Accountability and Sustainability          | MSc                |
| Accounting, Finance and Management                     | MSc                |
| AI for Business  | MSc                |
| Business Analytics                                     | MSc                |
| Data Science for Business                              | MSc                |
| Finance and Investment                                 | MSc                |
| Financial Technology                                   | MSc                |
| Global Banking and Finance                             | MSc                |
| Global Management (Online)                             | MSc                |

| Programme  | Award(s) |
|--|----------|
| Global Operations and Supply Chain Management        | MSc      |
| Human Resource Management                            | MSc      |
| Integrated Design Management                         | MSc      |
| International Business Strategy                      | MSc      |
| Management   | MSc      |
| Management (CSR and Sustainability)                  | MSc      |
| Management (Digitalisation and Big Data)             | MSc      |
| Management (Entrepreneurship and Innovation)         | MSc      |
| Management (International Business)                  | MSc      |
| Management (International Human Resource Management) | MSc      |
| Management (Marketing)                               | MSc      |
| Management (Project Management)                      | MSc      |
| Marketing  | MSc      |
| Master's of Business Innovation                      | MBI      |

PGCert = Postgraduate Certificate  
PGDip = Postgraduate Diploma

# Postgraduate research programmes



Search for a postgraduate research programme at  
[bristol.ac.uk/postgraduate](http://bristol.ac.uk/postgraduate)

| Programme                                       | Award(s)   |
|---|------------|
| <b>Faculty of Arts, Law and Social Sciences</b> |            |
| Accounting and Finance                          | PhD        |
| Advanced Quantitative Methods                   | PhD        |
| Anthropology and Archaeology                    | PhD, MPhil |
| Classics and Ancient History                    | PhD, MPhil |
| Comparative Literatures and Cultures            | PhD, MPhil |
| Creative Writing                                | PhD, MPhil |
| Disability Studies                              | PhD        |
| East Asian Studies                              | PhD        |
| Economics                                       | PhD        |
| Education                                       | PhD        |
| Educational Psychology                          | DEdPsy     |
| English Literature                              | PhD, MPhil |
| Exercise, Nutrition and Health                  | PhD        |
| Film and Television                             | PhD, MPhil |
| French  | PhD, MPhil |
| Geographical Sciences (Human Geography)         | PhD        |
| German  | PhD, MPhil |
| Global Challenges and Transformations           | PhD        |
| Health, Wellbeing and Society                   | PhD        |
| Hispanic, Portuguese and Latin American Studies | PhD, MPhil |

| Programme                                  | Award(s)         |
|--|------------------|
| History                                    | PhD, MPhil       |
| History of Art                             | PhD, MPhil       |
| Innovation and Entrepreneurship            | PhD, MPhil       |
| Italian                                    | PhD, MPhil       |
| Law  | PhD              |
| Linguistics                                | PhD, MPhil       |
| Management                                 | PhD              |
| Medieval Studies                           | PhD, MPhil       |
| Music                                      | PhD, MPhil, MMus |
| Philosophy                                 | PhD, MPhil       |
| Politics                                   | PhD              |
| Religion and Theology                      | PhD, MPhil       |
| Russian                                    | PhD, MPhil       |
| Social Policy                              | PhD              |
| Social Work                                | PhD              |
| Sociology                                  | PhD              |
| Sociotechnical Futures and Digital Methods | PhD              |
| Sustainable Futures                        | PhD              |
| Theatre and Performance                    | PhD, MPhil       |
| Translation                                | PhD, MPhil       |
| <b>Faculty of Health and Life Sciences</b> |                  |
| Biochemistry                               | PhD, MSc(R)      |

| Programme  | Award(s)             |
|--|----------------------|
| Biological Sciences  | PhD, MSc(R)          |
| Cellular and Molecular Medicine                              | PhD, MD, MSc(R)      |
| Integrative Cardiovascular Science (BHF)                     | PhD                  |
| Neuroscience   | MSc(R)               |
| Oral and Dental Sciences                                     | PhD, MSc(R)          |
| Physiology, Pharmacology and Neuroscience                    | PhD, MSc(R)          |
| Population Health Sciences                                   | PhD, MD, MSc(R)      |
| Psychology   | PhD, MSc(R)          |
| South West Biosciences Doctoral Training Partnership (BBSRC) | PhD                  |
| Translational Health Sciences                                | PhD, MD, DSc, MSc(R) |
| Veterinary Sciences  | PhD, MSc(R)          |
| <b>Faculty of Science and Engineering</b>                    |                      |
| Advanced Composites  | PhD                  |
| Aerosol Science  | PhD                  |
| Aerospace Engineering  | PhD, MSc(R)          |
| Chemistry  | PhD, MSc(R)          |
| Civil Engineering  | PhD, MSc(R)          |
| Composites Manufacture                                       | EngD                 |
| Computer Science   | PhD, MSc(R)          |

| Programme  | Award(s)    |
|--|-------------|
| Cyber Security (Cyber Secure Everywhere)                 | PhD         |
| Earth Sciences   | PhD, MSc(R) |
| Electrical and Electronic Engineering                    | PhD, MSc(R) |
| Engineering Biology                                      | PhD         |
| Engineering Mathematics                                  | PhD, MSc(R) |
| Future Innovation in Non-Destructive Evaluation          | PhD, EngD   |
| Geographic Data Science                                  | PhD         |
| Geographical Sciences (Physical Geography)               | PhD         |
| Global Environmental Challenges                          | MSc(R)      |
| Great Western Four+ Doctoral Training Partnership (NERC) | PhD         |
| Mathematics  | PhD, MSc(R) |
| Mechanical Engineering                                   | PhD, MSc(R) |
| Physics  | PhD, MSc(R) |
| Practice-Oriented Artificial Intelligence                | PhD         |
| Quantum Information Science and Technologies             | PhD         |
| Superconductivity  | PhD         |
| Technology Enhanced Chemical Synthesis                   | PhD         |

MSc(R) = MSc by research

# Our location

**Bristol has excellent transport links and an international airport. It's easy to explore the UK and further afield by train, bus and plane.**



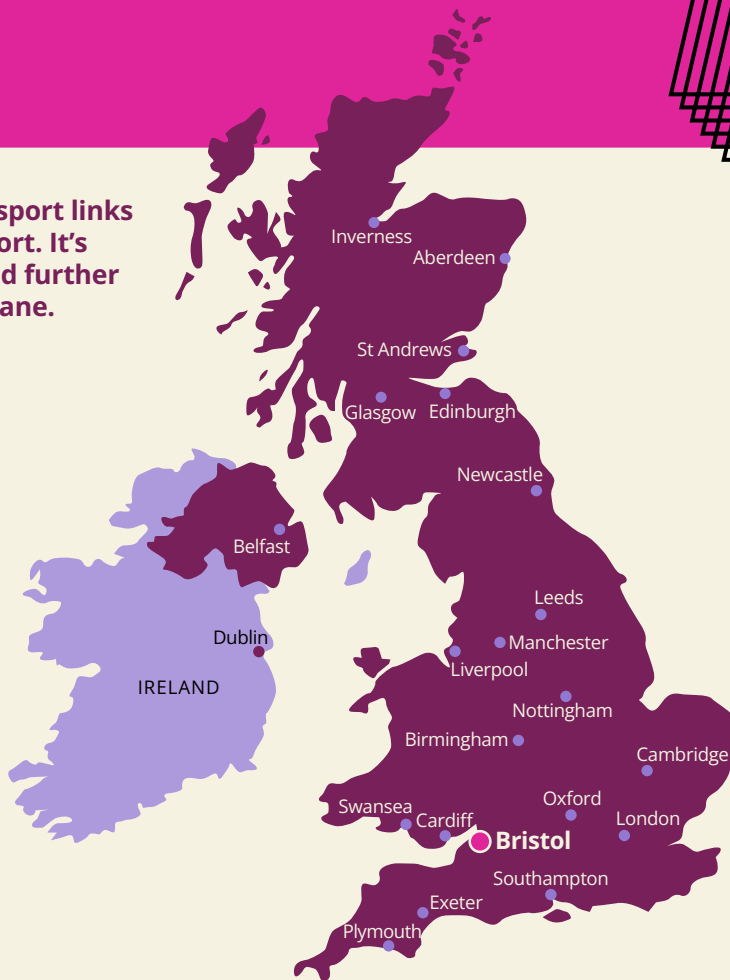
## Travel times by train

|            |                   |
|------------|-------------------|
| London     | 1 hour 35 minutes |
| Bath       | 15 minutes        |
| Cardiff    | 55 minutes        |
| Birmingham | 1 hour 20 minutes |
| Manchester | 3 hours           |



## Travel times by plane

|           |                    |
|-----------|--------------------|
| Edinburgh | 1 hour 15 minutes  |
| Dublin    | 1 hour 5 minutes   |
| Paris     | 1 hour 20 minutes  |
| Madrid    | 2 hours 15 minutes |
| Rome      | 2 hours 40 minutes |



If you need all or part of this publication in an alternative format, please contact us:

Tel: **+44 (0)117 394 1649**

Email: **marketing-team@bristol.ac.uk**

This prospectus contains information for students planning to start university in autumn 2026. We have made every effort to ensure all details are correct at the time of going to press (August 2025).

However, since this information is subject to change, check the University's website for the latest updates:

**bristol.ac.uk**

Design: Green Hat

Print and photography: University of Bristol Print Service, Bhagesh Sachania, Bristol SU, Chris Bahn, Chris Walker, Dan Rowley, FCBStudios, George Chan, Grant Smith, Jon Jerrrome, Nick Smith, Raúl Cacho Osés, Secchi Smith, St Paul's Carnival, UoB Accommodation Office, Visit Bristol

Average travel times from:  
thetrainline.com, skyscanner.net  
June 2025

© University of Bristol 2025

