

Sustainability Strategy

December 2021

Court

Barra Mac Ruairí
Chief Property Officer

Joint Institutional lead,
Sustainability

bristol.ac.uk

Sustainability Strategy

- Sustainability is a deeply rooted woven into our New University Strategy.
- It is set out in our vision, as a cornerstone and as one of the three cross cutting themes.
- The Sustainability Strategy is a sub-strategy of the University.
- It was written by Sustainability Council in consultation with staff & students and focuses on 4 elements: Education, Research, Civic Engagement & Operations
- Jointly Lead by two UEB members: Phil Taylor & Barra Mac Ruairí
- Phil (research & education) & Barra (civic & operations)

Sustainability 4 Objectives

1. Future citizens: Make sustainability a core competency of a Bristol education by mobilising our curriculum, our student experience and our partnerships in support of the development of tomorrow's global citizens.

- *Because: knowing how to live and work sustainably will be an essential skill for all future graduates and will be an absolute expectation of a world-class university education.*

Sustainability Aims

2. Research impact: Further strengthen the narrative and reach of the University's multidisciplinary sustainability expertise, so that the impact of its research is felt in both practical applications and public policy contributions.

- *Because: contributing to the global body of knowledge about sustainability is one of the most impactful outputs that the University can aspire to.*

Sustainability Aims

3. Partnering for Sustainability: Use the University's net-zero transition as an opportunity to provide thought-leadership in partnership with students, staff, community groups, Bristol City Council and the business community around shared and just transitions to a sustainable future.

- *Because: institutional leadership in the face of the climate crisis has the potential to galvanize student and staff support, capture the imagination of our civic partners and meaningfully strengthen the University's international visibility and reputation.*

Sustainability Aims

4. A More Sustainable Estate: By 2030 we will have made significant progress towards becoming a Carbon Net Zero Campus, minimising the negative impact we have on the environment by the way we make, manage and maintain our campuses.

- *Because: In delivering its teaching, learning and research activities, the University estate has the potential to negatively impact the environment, and especially climate change; taking an approach which minimises that impact aligns with our teaching curricula and is informed by our own research as well as public policy*

Sustainability Strategy

December 2021

Court

Professor Phil Taylor
Pro Vice Chancellor Research

Joint Institutional lead,
Sustainability

bristol.ac.uk

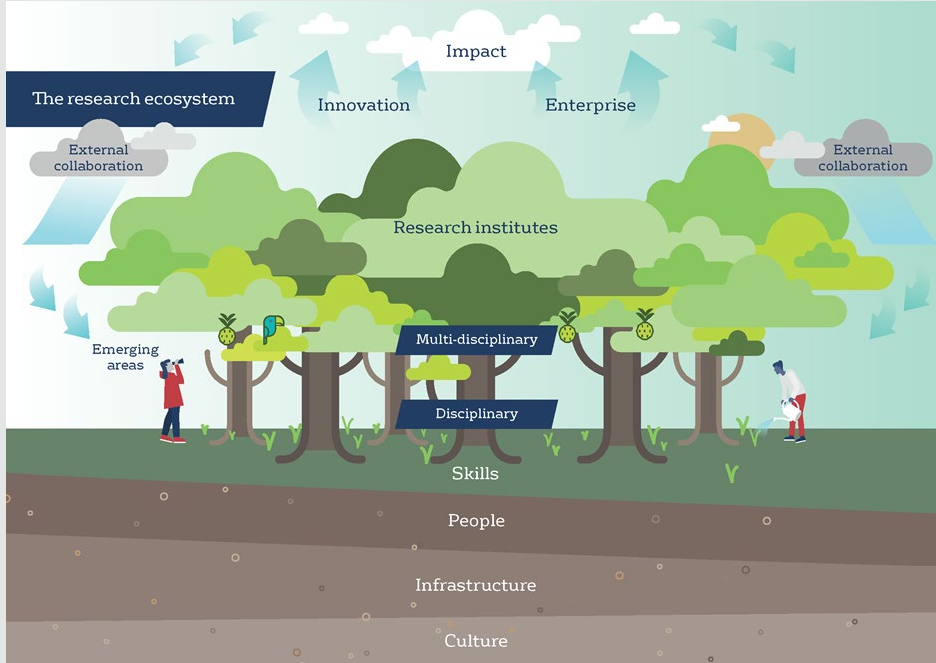
University of Bristol at COP 26



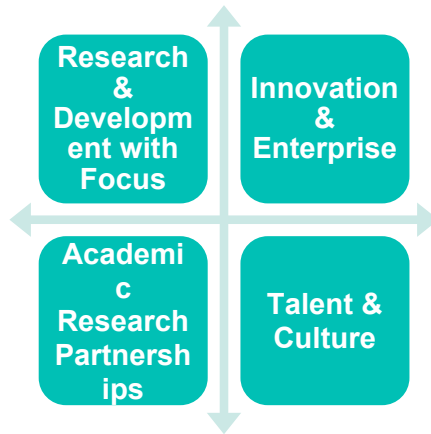
University of Bristol at COP 26

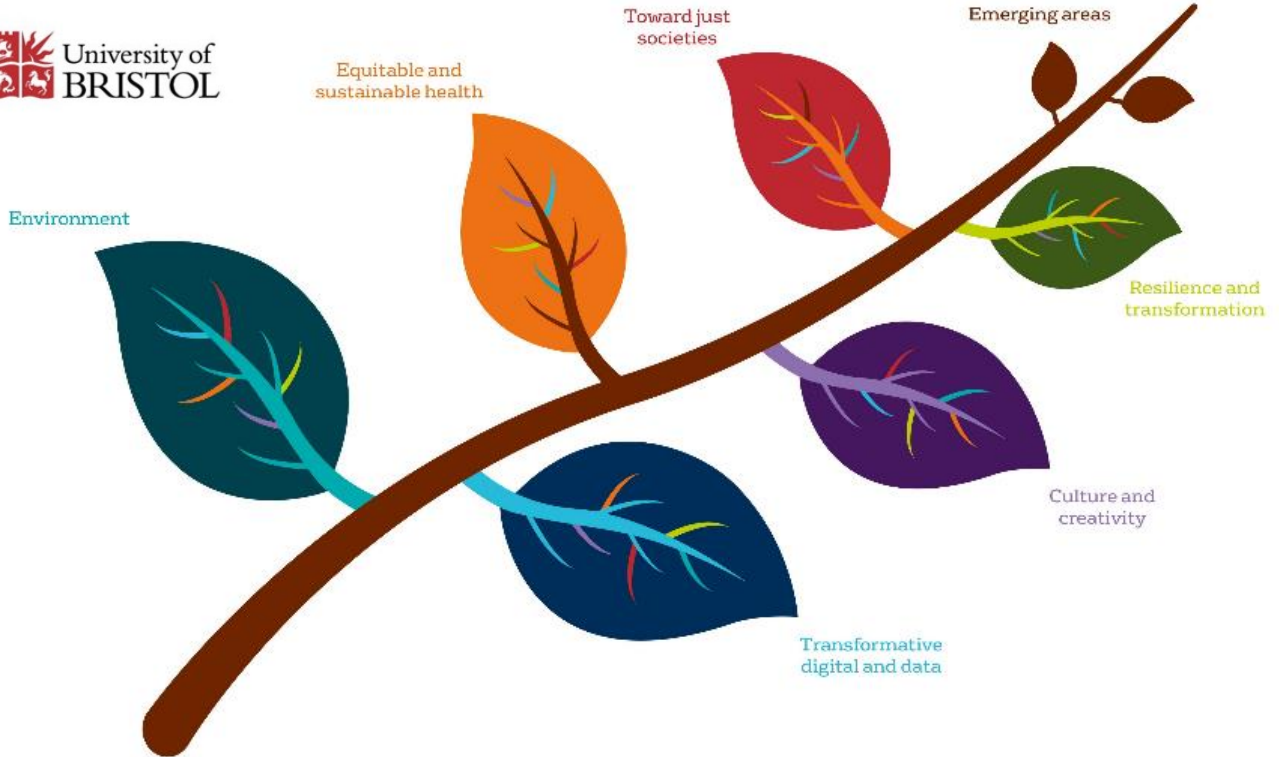
- Glasgow Climate Pact, signed by all 197 countries
- Deforestation, Methane, Adaptation, FF subsidies, Coal Phase Down
- Is 1.5° C still alive ?, Cairo next year
- Strong UoB presence staff and students, Led by Cabot (Paul Bates) and SU (Ruth Day) additional funding from DARO
- UoB now have UNFCCC observer status for future COPs
- Strong media coverage of our research
- In Bristol, Mock COP26 local schools, 90+ students

Research Excellence and Impact



World-leading Research and Innovation with Global Impact







Research Excellence and Impact

The University strategy to be a global Top 50 institution and remain an international center for research excellence and impact.

These goals require:

1. Outstanding international research reputation, networks, collaboration
2. Fundamental and applied research excellence and impact across a range of disciplines
3. A healthy pipeline of significant research funding from a diverse range of sources

Sustainable Research: Tensions and Trade Offs

- Are we prepared to restrict international research travel?
 - No domestic or European flights?
 - Introduce a carbon allowance for academic travel?
 - Invest in state-of-the-art conferencing facilities and software platforms.
 - *What are the ED&I impacts and impacts on ECRs of such measures?*
- Should we restrict energy/resource/waste intensive research?
 - Could sustainability research be partially exempt ?
 - Can we pivot to digital/simulation research in high energy/waste areas?
 - Can we go further faster on our LEAF, laboratory certifications ?
 - *How might such measures affect Bristol's research excellence and impact?*
- Will we restrict the sources of funding we are willing to accept?
 - What industries will we accept funding from, fossil fuels? Palm oil manufacturers? Aviation?
 - Are there nations we would be reluctant to collaborate with/accept funding from?
 - Are there areas of research inquiry we would avoid seeking funding for?
 - *How might restricting funding affect our research ambitions/goals?*



Sustainability Strategy

December 2021

Court

Professor Chris Priest

Academic lead,
Sustainability

bristol.ac.uk

Education for Sustainability and the Climate Emergency at the University of Bristol

bristol.ac.uk

University Strategy Commitments

Environmental Sustainability as a cross-cutting theme,
meets the Education pillar:

“Provide opportunities for students to engage meaningfully with issues such as inequality, sustainability and the climate emergency both within and outside of the curriculum.”

Educational Experiences

- Bristol Futures Open Units (Interdisciplinary, Year 1)
- Some discipline-specific units. (Driven by motivated individuals)
- Some strong specialist sustainability-themed Masters



The screenshot shows the FutureLearn website interface. At the top, there is a navigation bar with the FutureLearn logo, menu items for 'Categories', 'Courses', and 'Using FutureLearn', a search bar, and user profile icons. The main content area features the course title 'Unleash Your Potential: Sustainable Futures' in a large, bold font. Below the title, a subtitle reads 'Learn about the sustainability challenges of the modern world, and make a positive contribution to society.' To the right of the text is the University of Bristol logo. A prominent pink button labeled 'Go to course - starts 24 Jun' is positioned below the text. A horizontal navigation bar below the main content area includes links for 'Overview', 'Topics', 'Start dates', 'Requirements', 'Educators', 'Try it', and 'More courses'. The bottom of the page features a decorative banner with a green background and icons representing sustainability, such as a globe, a recycling symbol, a person, and a house.

- Open Online Course through Futurelearn
- Over 3000 UoB students; Over 15000 total.
- Next run starts 14th Feb 2022. Join us!

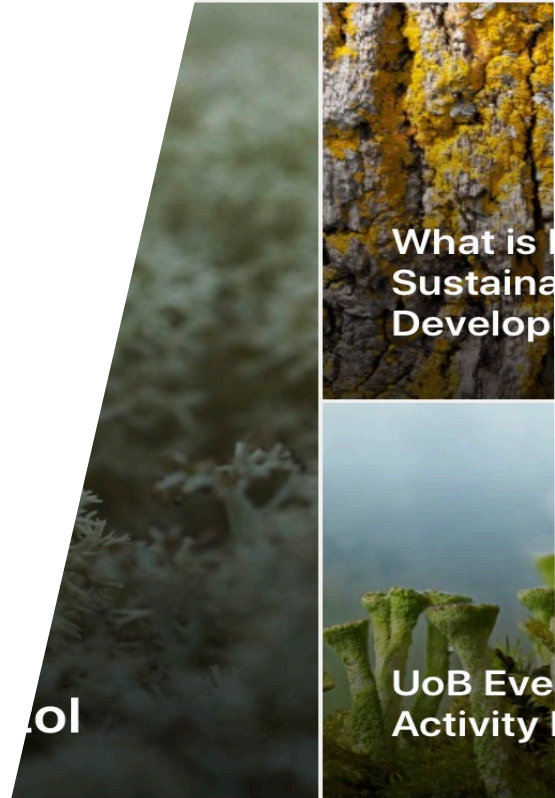
IEMA for universities

Together, let's drive change

As a university, you'll want to ensure that graduates leaving environmental programmes have the skills to support the global economy. Arm your graduates with the expertise and understanding they need to secure a sustainable future.

Supporting Staff

- Staff Network, meeting through termly Gatherings
- Resource site (which could be used as part of Curriculum Enhancement activities)
- Staff Training workshop
- Student Sustainability Champions in schools.





Where Next...?

bristol.ac.uk

Sustainability and Operations

Martin Wiles
Head of Sustainability

Our Sustainability Goals

- Net zero carbon emissions for scope 1 & 2 by 2030
- Enable the University to operate along Circular Economy Principles
- Minimise our environmental impact from all forms of travel and transport
- To construct our buildings to high environmental standards
- To maximize space utilization
- Improve Biodiversity within our estate
- Integrating sustainable principles into our procurement processes.
- Provide food that enhances positive social ethical and environmental benefits.

Our Carbon Plan

- 1) Optimising our use of space: Saving 5% CO₂
- 2) Conserving Energy: Saving 5% CO₂
- 3) Energy Efficiently: Saving 30% CO₂
- 4) Building new buildings Saving 10% CO₂
- 5) Using self-generated heat and electricity from lower-carbon sources: Saving 5% CO₂
- 6) Using local externally generated heat and electricity from lower-carbon sources: Saving 20% CO₂
- 7) Using mains gas and electricity from lower-carbon sources: Saving 20% CO₂
- 8) Certificated offsets: Saving 5% CO₂

Sustainability Delivery

- Reduced scope 1 & 2 carbon emissions by 39% from 2005/06 baseline (currently 28k tonnes emitted)
- Purchase of renewable energy
- Almost 1MW of solar PV installed
- Reduced water use by 38%
- Invested £10million in energy efficiency measures over ten years
- Certified to ISO 14001 and 14064 (environmental and energy efficiency)
- 1% of waste to landfill, 70% diverted by reuse, recycling and compost/anaerobic digestion
- Big Give – student belongings end of year – raised over £1.4 for charity over 10 years

Sustainability Delivery

- Run 2 bus services – 800K passenger journeys a year.
- Single occupancy car journeys down to 18% of commuting.
- Disinvested in Fossil Fuels.
- Green Flag certification for External Estates.
- Behaviour change initiatives, Be the Change and Green Impact (developed at Bristol).
- Partner in delivery of student engagement during 2015 European Green Capital.
- 1st UK university to have 100% LEAF certification for all labs.
- Helped set up 1st University wide open unit on sustainable development.
- Winners of multiple awards, Green Gown, national energy efficiency and Times Higher

Research Discussion

bristol.ac.uk

Education Discussion

bristol.ac.uk

Operations Discussion

bristol.ac.uk