



Disaster History

Dan Haines

Senior Lecturer in Environmental History

Daniel.Haines@Bristol.ac.uk

Building Partnerships for Global Challenges

13 April 2018

Building partnerships (with historians) for global challenges

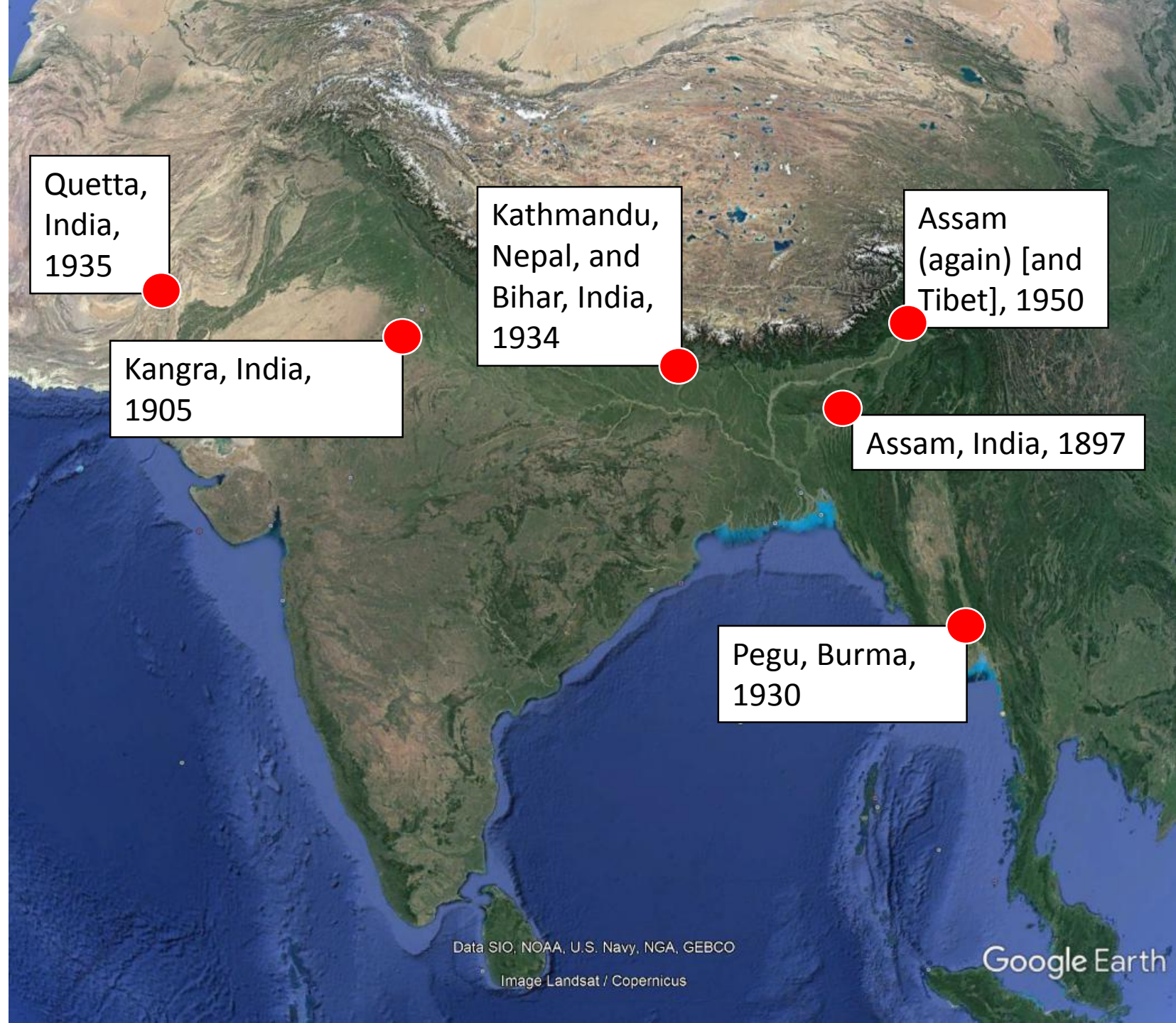
- History's two roles: analysis social change and data-mining
- Need targeted interventions
- Focus on relationships
- Different incentives
- Area specialism vs transferability

Broken Ground: Earthquakes, Colonialism and Nationalism in South Asia, c. 1900-1960

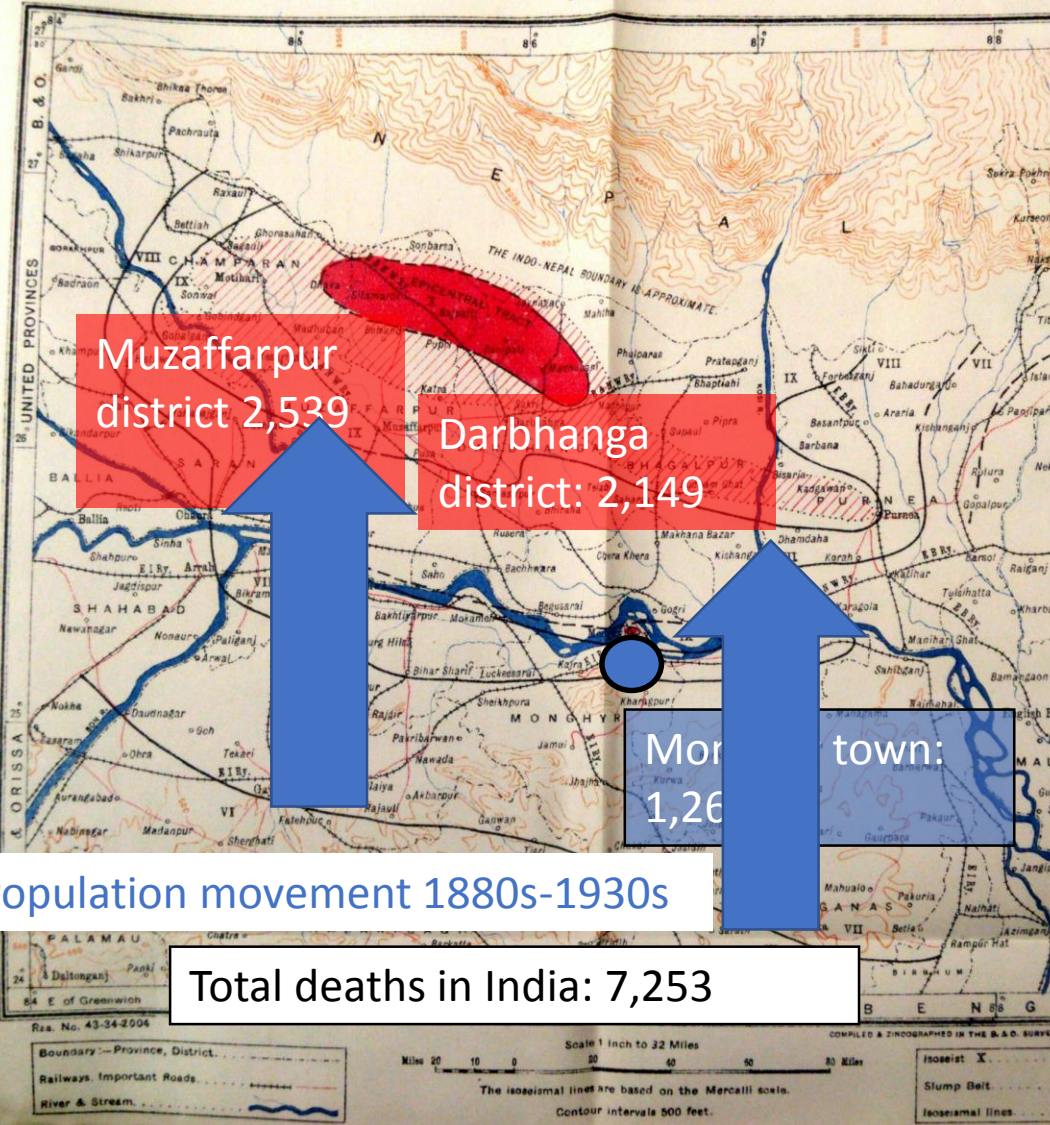
- Funded by UK Arts & Humanities Research Council/Global Challenges Research Fund
- Impact of earthquakes on politics and society in India, Pakistan, Nepal, Myanmar



NSET
Earthquake Safe Communities in Nepal



THE BIHAR EARTHQUAKE
OF THE 15TH JANUARY 1934
ISOSEISMAL MAP



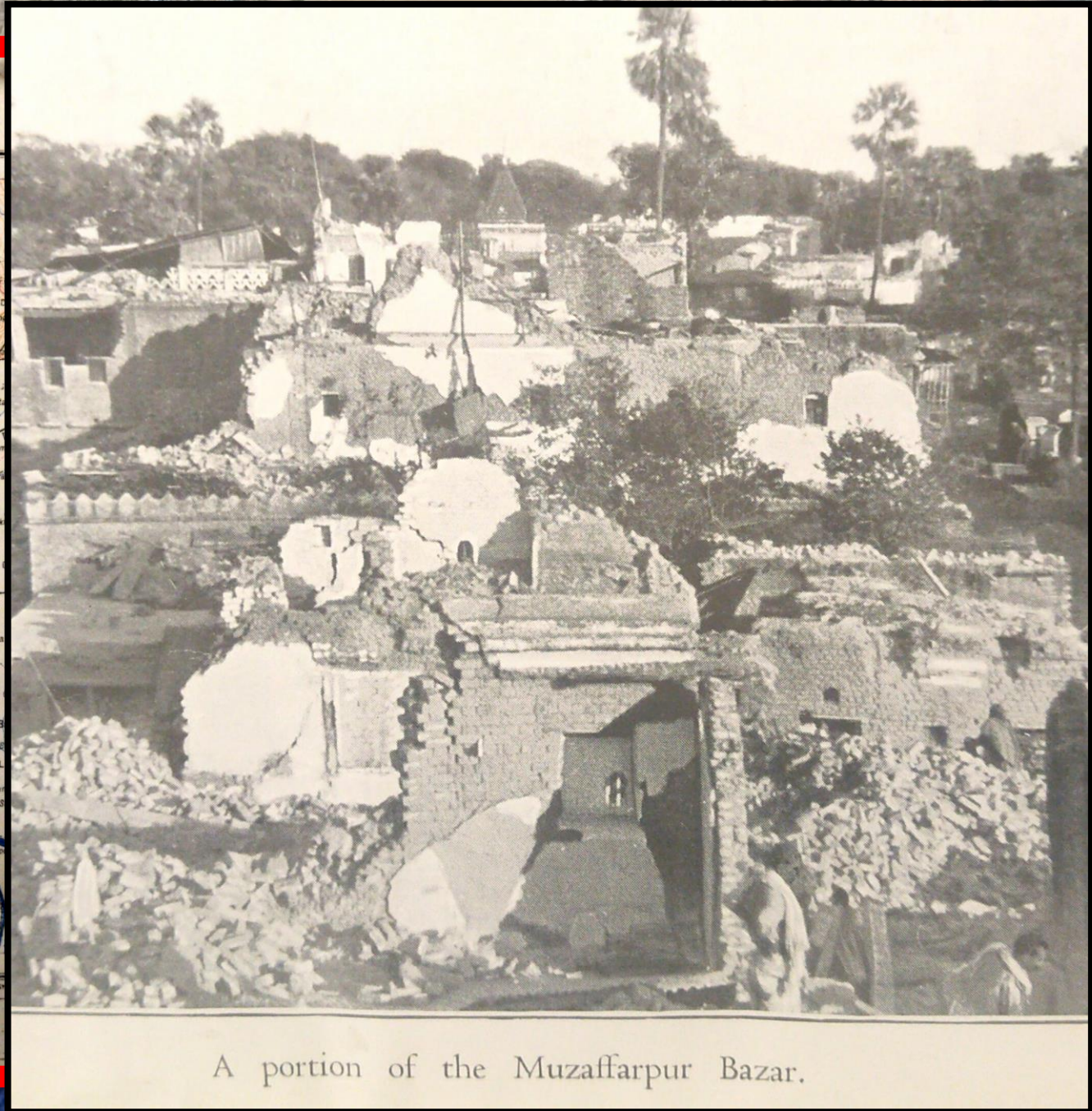
Muzaffarpur
district 2,539

Darbhanga
district: 2,149

Moradabad
town:
1,260

Population movement 1880s-1930s

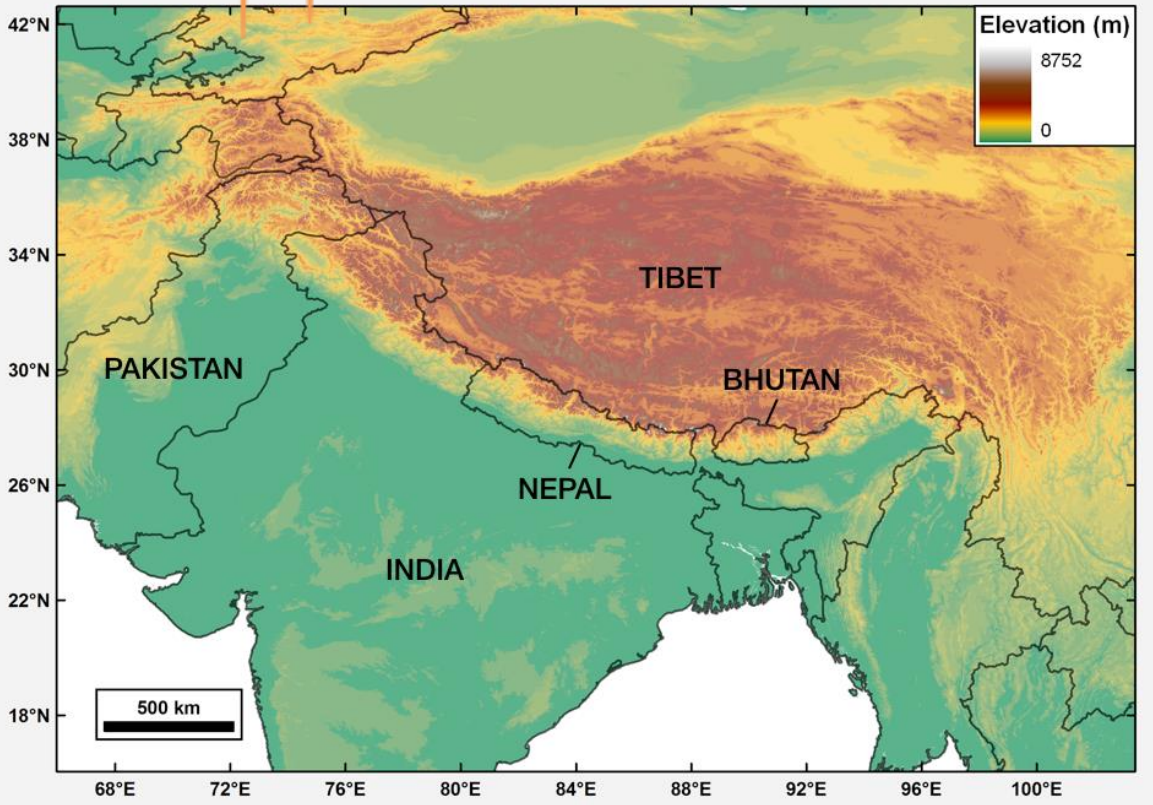
Total deaths in India: 7,253



A portion of the Muzaffarpur Bazar.



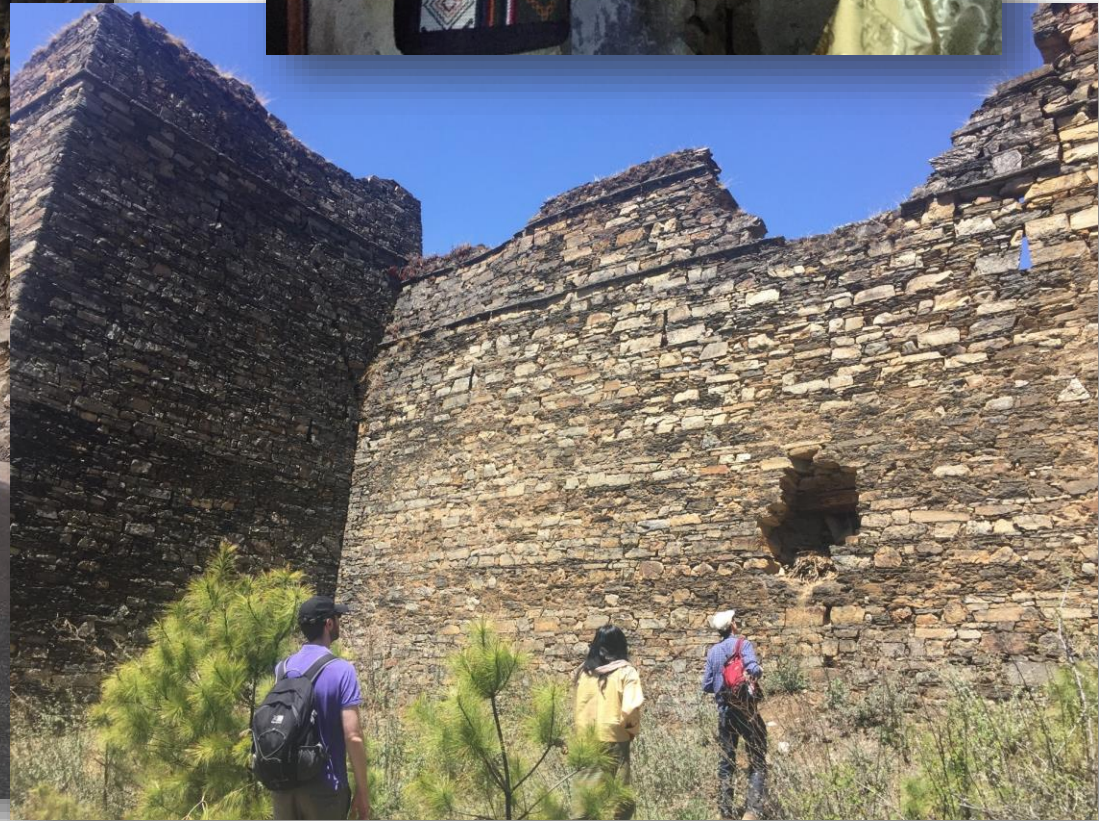
Building Bhutanese Resilience Against Cataclysmic Events



Brings together geoscientists, engineers, social scientists, geographers, historians, and policy makers to address seismic risk and develop resilience-building strategies across Bhutan.

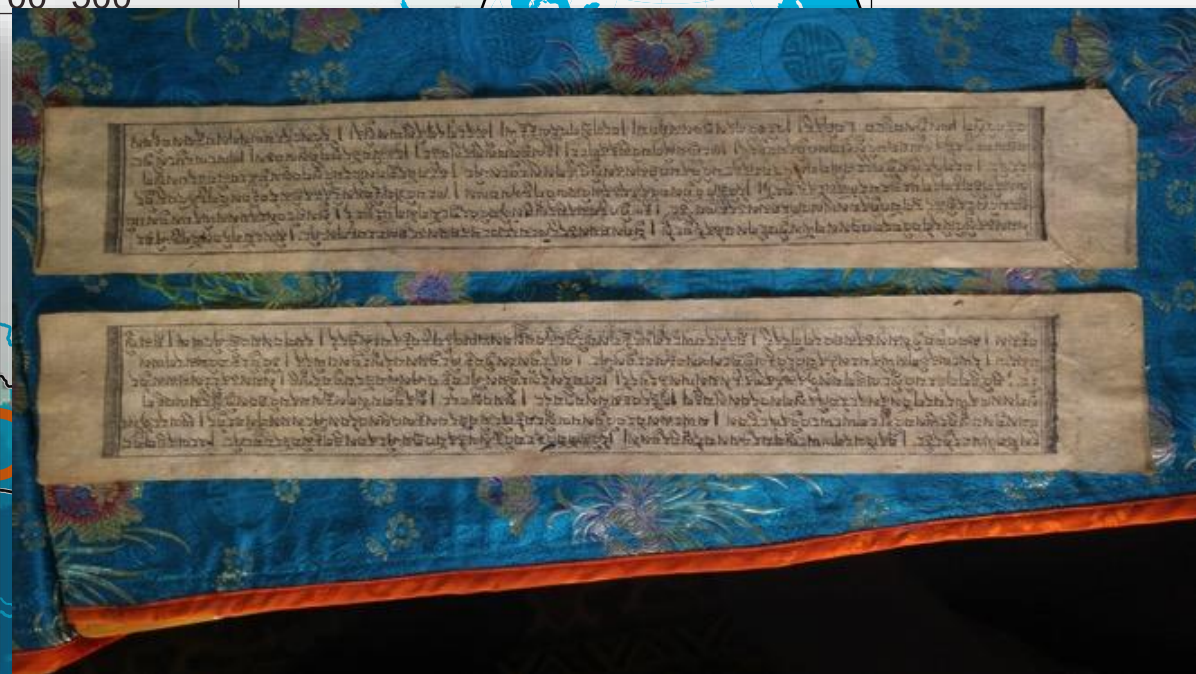
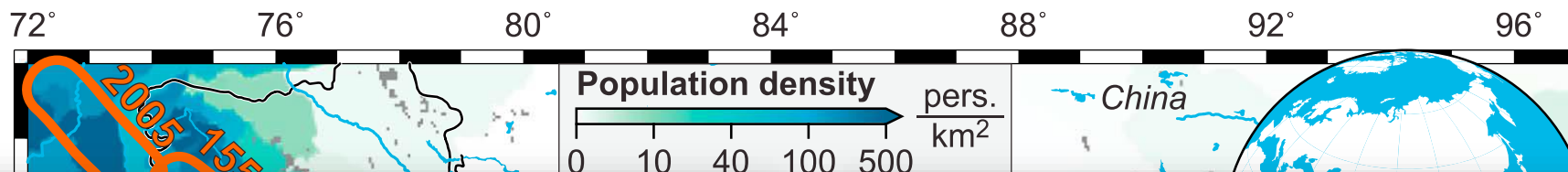


BRACE





Building a better earthquake catalogue through history



Building partnerships (with historians) for global challenges

- History's two roles: analysis social change and data-mining
- Need targeted interventions
- Focus on relationships
- Different incentives
- Transferability – area specialists



THE MORNING ROUND. DOCTOR AND PATIENTS IN THE HOSPITAL COMPOUND



Thank you

Daniel.Haines@Bristol.ac.uk