

## Teaching Newsletter

Canyng Hall, 39 Whatley Rd, BS8 2PS Tel 0117 3314547 Fax 0117 9287325  
[phc-teaching@bristol.ac.uk](mailto:phc-teaching@bristol.ac.uk)

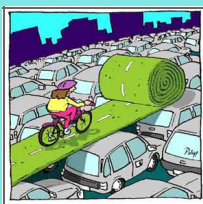


### Teaching workshop for Year 1 and WPC teachers Tuesday 18 September 2012 Engineers' House, Clifton, Bristol

Changes to the curriculum, review of WPC, effective feedback giving (role play included), sessions on teaching prescribing and EBM in Year 1 and a look at the OOH—[out of our heads](#) website showcasing creative work by Bristol medical students. For more information and to book your place email [phc-teaching@bristol.ac.uk](mailto:phc-teaching@bristol.ac.uk)

#### From Lucy Jenkins our new Year 1 lead

Having trained in Birmingham, I came to Bristol for GP training in 2005. I had always wanted to work in Africa, so after some tropical medicine study, I spent 2009 working in a medical school in Mozambique. It was a steep learning curve, with significant challenges in terms of resources and language; communication skills and consultations skills being more interesting when my Portuguese was not up to scratch! Whenever I am struggling with medicine or teaching now I remind myself that I am at least working in a language I can speak well and we are lucky with the standard of healthcare that we have in the UK.



#### Sustainable Healthcare SSC by Trevor Thompson

Second year medical students have a rich range of Student Selected Components (SSCs) from which to choose. Following a pitch to 250 restive students last month we have had (an unprecedented) 24 students sign up for our "Sustainable Healthcare" SSC which will run weekly from October to December 2012. In this SSC we imagine students not as empty receptacles but as "researchers", "educators", "activists" and "publishers". In other words we expect students to be very actively engaged with all aspects of design and delivery of the taught bits and also going out there and making a difference through a range of "direct action projects". Current ideas include teaching sustainability concepts in primary and secondary schools and running an awareness week within the university. We are also planning teaching from Bristol's cadre of heavy-weight climate scientists and a trip to the AstraZeneca factory at Avonmouth to see their environmental efforts at first hand. There may be opportunities for GP Educators with special interest in this field. We would also like to make their final presentations open to a wide audience. For more info email [trevor.thompson@bris.ac.uk](mailto:trevor.thompson@bris.ac.uk)

#### Top teaching tip—Year 2

Draw an abdomen on a flipchart and ask the students to think of the organs in the abdomen and add '-itis' to the name. This is a fun way to make them think about abdominal problems and draws on what they already know.

#### Year 5 Teaching Workshop

Fri 9th Nov. 2012

Engineers' House, Bristol

#### Fit2Teach programme



If you are teaching medical students on behalf of Bristol University you are entitled to attend the Fit2Teach workshops organised by the TLHP (Teaching and Learning for Health Professionals). Please take a look at their **fantastic free programme** for 2012-13. The workshops are held in all the academies, so no need to travel to Bristol. It is also a great opportunity to meet the people who teach the TLHP masters course. Find out more at <http://www.bris.ac.uk/medical-education/tlhp/courses/fit2teach/>