

# Bristol Festival of Education

Professional Development and  
School Based Learning

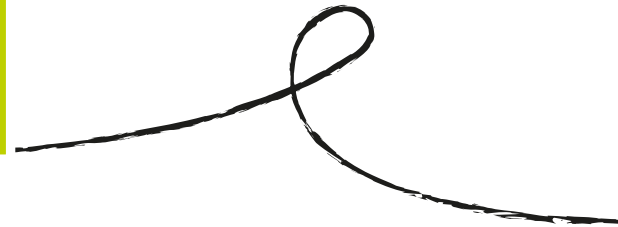
**Public Lecture  
Series 2014**

9-19 June

9-15  
June  
2014 **UNIVERSITIES  
WEEK**  
Ideas for Life



Graduate School of Education





Monday 9 June, 5 - 7pm

## **The new national curriculum: a way forward or a step back in time?**

Tim Oates, who was the Chair of the Expert Panel that advised the government on the new curriculum, will discuss the changes together with Sarah Baker (Redland Green), Clare Christie (Ashley Down Primary) and Professor Rosamund Sutherland (Head of School, GSoE).

---



Tuesday 10 June, 5 - 7pm

## **Breaking news and building bridges: How journalists and academics can be friends**

Sue Littlemore (Education Media Centre) and Jonathan Drori CBE (visiting Professor at the University of Bristol and former media executive) and Dr Paul Howard-Jones (GSoE, University of Bristol) will be debating the relationship between academics and the media, whilst trying to bridge the divide.

---



Wednesday 11 June, 5 - 7pm

## **'Action Research' with schools**

'Action Research' is currently being encouraged in schools as a means for staff to research their own practice and use their findings to facilitate improvements in pupil achievement. Staff at the Graduate School of Education have a long history of collaborating with teachers on action research projects.

---



Thursday 12 June, 5 - 7pm

## **Encouraging creativity in early years education**

Exploring the many aspects which contribute to making a rich creative learning environment, this workshop will enable you to gain a deeper understanding of creativity, explore what is important in early years development and how the ability to think creatively can have a significant impact.



Monday 16 June, 4:45 - 6:45pm

## **Learning to think like designers and engineers: The 'Future Brunels' three years on**

The 'Future Brunels' and staff from the ss Great Britain Trust will outline the programme using the photographs and records they have produced. You will then be invited to talk to the 'Future Brunels' and browse through more photographs prepared by each of the three year groups.



Tuesday 17 June, 5 - 7pm

## **Celebrating 20 years of the SENCO**

Since its inception, the role of SENCO has been an important mechanism through which the needs of learners with Special Educational Needs and Disability are supported in school settings. In this session we celebrate the work of SENCOs and their pupils from three schools in Bristol.



Wednesday 18 June, 3 - 5pm

## **'Spirited Arts' poetry slam**

'Spirited Arts' is a national annual competition for school students which invites them to write their own poetry. English and RE PGCE student teachers have worked with students and teachers in GSoE partnership schools to inspire and encourage them to respond creatively to spiritual themes.



Wednesday 18 June, 5 - 7pm

## **Is science magic? Is magic science?**

This debate between a professional magician and a science education specialist will explore where and when scientific explanations of the illusions in a science teacher's repertoire should or should not be provided, all whilst dazzling you with a rich display of magic tricks and scientific experiments.





Thursday 19 June

## Learning through research: Doctoral and postdoctoral researchers' showcase

Providing a flavour of the work being undertaken by doctoral and postdoctoral researchers within the school. Presentations will cover a range of topics including the results of an intervention programme to improve mathematical achievement in primary classrooms.

## Our mission

"To develop learning and leadership for a changing world through research and teaching that promotes achievement, opportunity and social justice."

**Professor Rosamund  
Sutherland, Head of School**

## The school

Since its founding in 1913, the GSoE has achieved international prominence and distinction in developing the professional and academic skills of educationists in the UK and around the world.

## Join our growing community

**Initial Teacher Education** [www.bris.ac.uk/education/students/ite/](http://www.bris.ac.uk/education/students/ite/)

**Masters Programmes** [www.bris.ac.uk/education/students/masters/](http://www.bris.ac.uk/education/students/masters/)

**Doctoral Programmes** [www.bris.ac.uk/education/students/doctoral/](http://www.bris.ac.uk/education/students/doctoral/)

**We believe that understanding and improving the enterprise of Education as a basis for opportunity and social inclusion is central to the health and future of societies.**

Today more than 60 academic colleagues teach and guide over 600 students in doctoral, masters' and initial teacher education programmes each year, which lead to careers in research, teaching, school leadership, educational and social policy, educational psychology, teaching English as an additional language and many other fields.



## Let's get creative!

We've teamed up with several of our partnership schools this year to bring you an exciting and thought provoking programme of twilight talks and interactive sessions for all ages. After the success of our Centenary celebrations last year, the Festival of Education returns with a packed schedule of events centred around the theme of 'professional development and school based learning'; with debates on hot topics with noted guest speakers, hands-on workshops intended to inspire you, and presentations from both local school children and our own GSoE researchers showcasing their work. From performing poetry to engaging the media, 'Action Research' to SENCOs, debating the new national curriculum and even a little bit of magic, we look forward to encouraging you to engage with new ideas and get a fresh perspective on old subjects during our two week programme.

This year the Festival of Education is being run in connection with 'Universities Week', a Universities UK initiative which aims to open up a national conversation about the relevance of university-based research and its everyday impact on our lives.

Please visit our website for more information about the Festival, Universities Week, and to sign up for a session:  
[www.bit.ly/UOBedfest](http://www.bit.ly/UOBedfest)

## Booking

All of the Festival of Education events are free to attend, but booking is required in advance. Please register to attend at: [www.bit.ly/UOBedfest](http://www.bit.ly/UOBedfest)

## Venue

Graduate School of Education  
35 Berkeley Square  
Bristol BS8 1JA

## Parking

Limited short-term 'Pay and Display' parking is available in Berkeley Square. NCP parking can be found at Berkeley Place and Park Row.

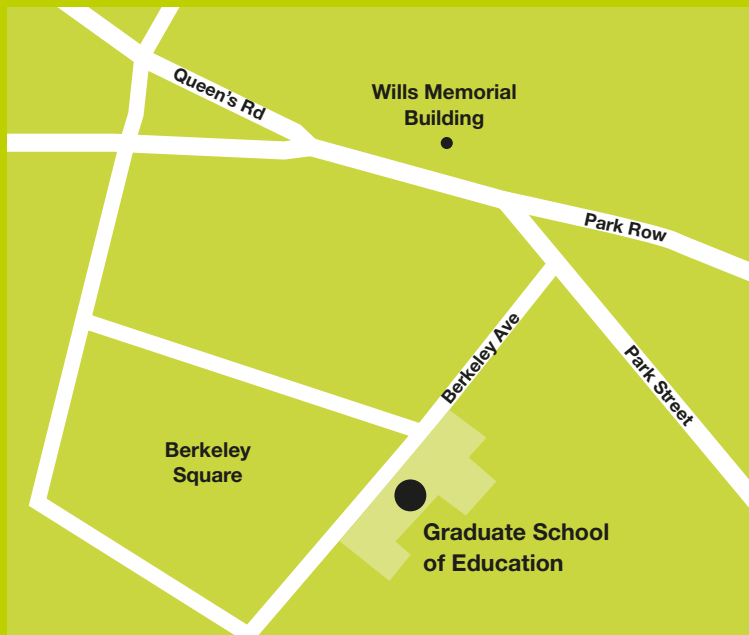
## Contact us

**E** [ed-events@bristol.ac.uk](mailto:ed-events@bristol.ac.uk)

**T** 0117 331 4291

**W** [www.bristol.ac.uk/education](http://www.bristol.ac.uk/education)

**T** [@GSOEBristol](https://twitter.com/GSOEBristol)



[www.bristol.ac.uk/maps](http://www.bristol.ac.uk/maps)



Graduate School of Education